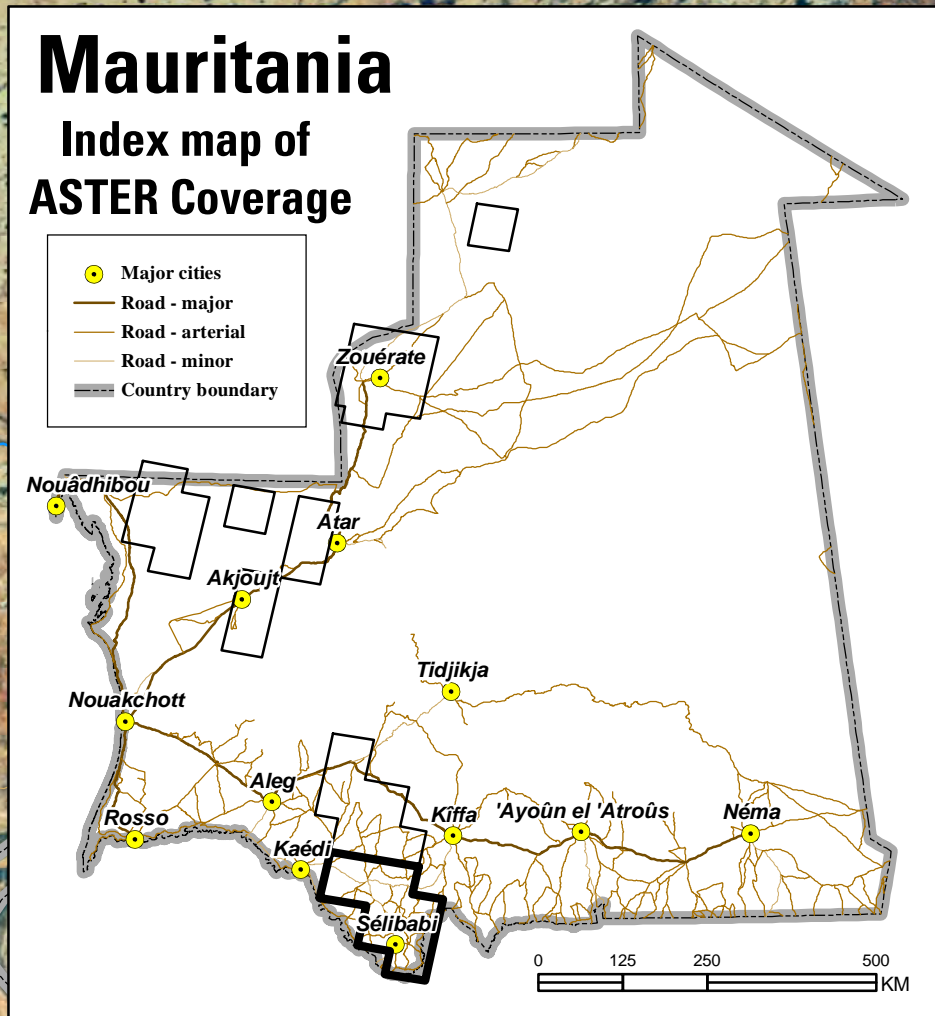


Area 5 - Southern Mauritanides - ASTER Continuous-Tone Map of SWIR Mineral Groups

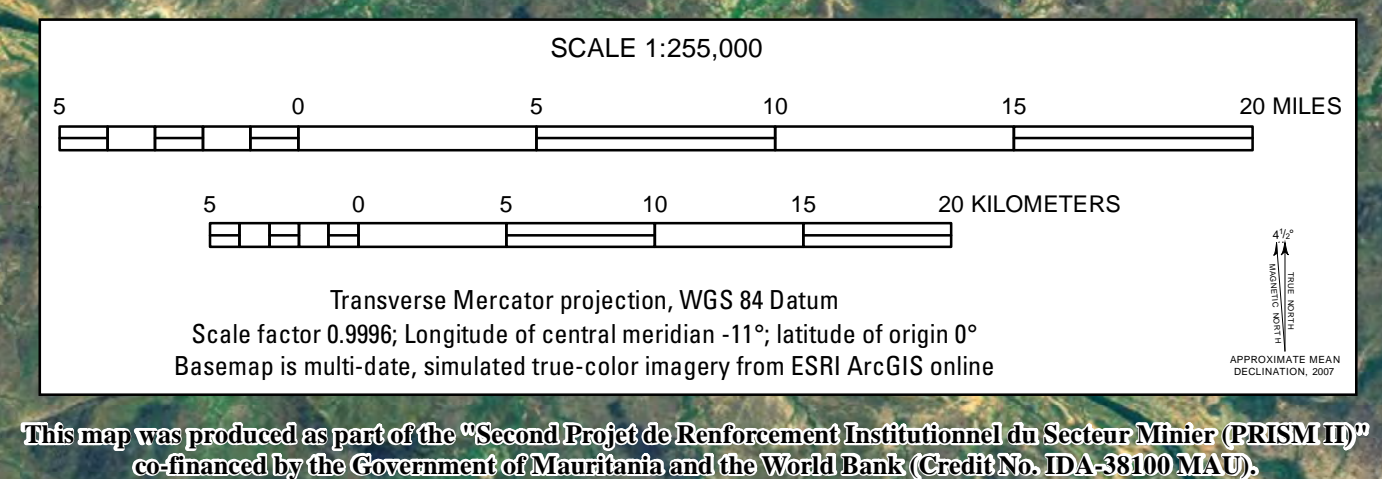
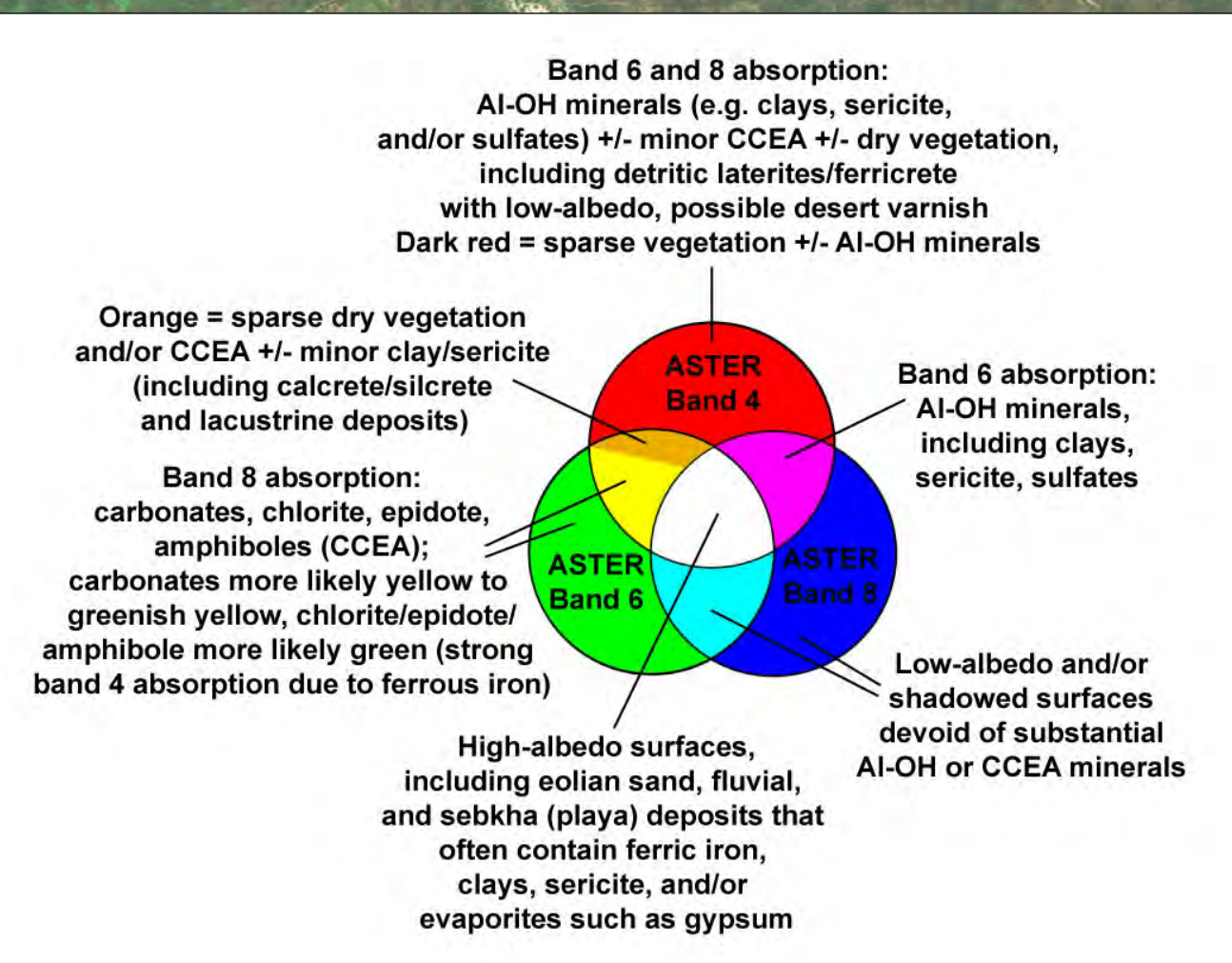
-13°

-12°



- Explanation**
- Mineral occurrences**
- Arsenic
 - Asbestos
 - Barium
 - Beryllium
 - Bituminous shales
 - Chromium
 - Copper
 - Fluorine
 - ◆ Gem
 - Gold
 - Granite
 - Gypsum
 - Iron
 - Kaolin
 - Lead
 - Manganese
 - ▲ Marble
 - ▲ Molybdenum
 - ▲ Nickel
 - ▲ Oil
 - ▲ Organic matter
 - ▲ Ornamentation material
 - ▲ Peat
 - ▲ Phosphorus
 - Rare Earth
 - Salt
 - Strontium
 - Sulfur
 - Thorium
 - Tin
 - Titanium
 - Tungsten
 - ★ Uranium
 - ★ Wollastonite
 - ★ Zinc
- Country boundary
 - Railroad
 - Road - major
 - Road - arterial
 - Road - minor
 - Stream - permanent
 - Stream - intermittent
 - Major cities

Explanation for ASTER Mineral Group Map



-13°

-12°