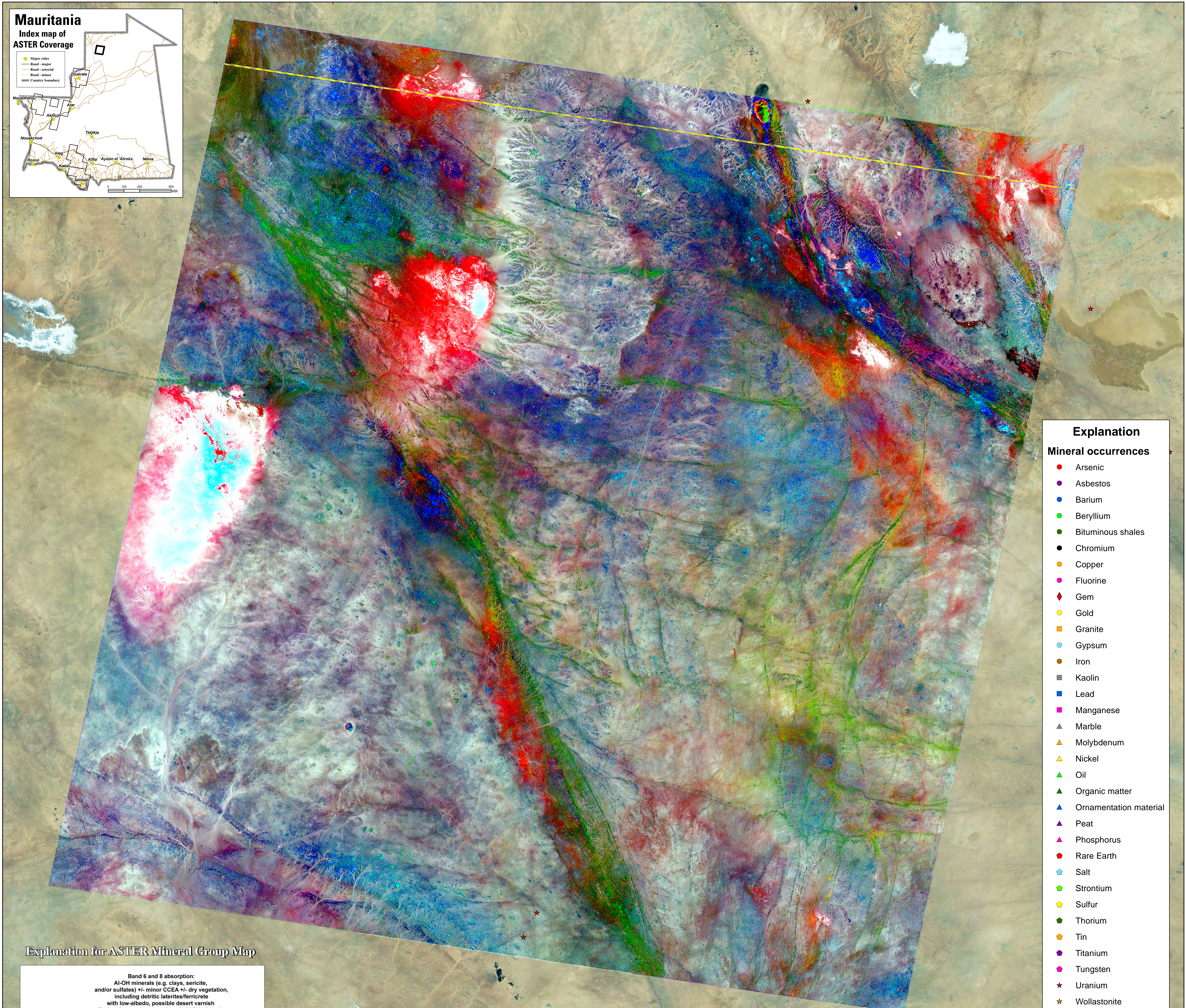
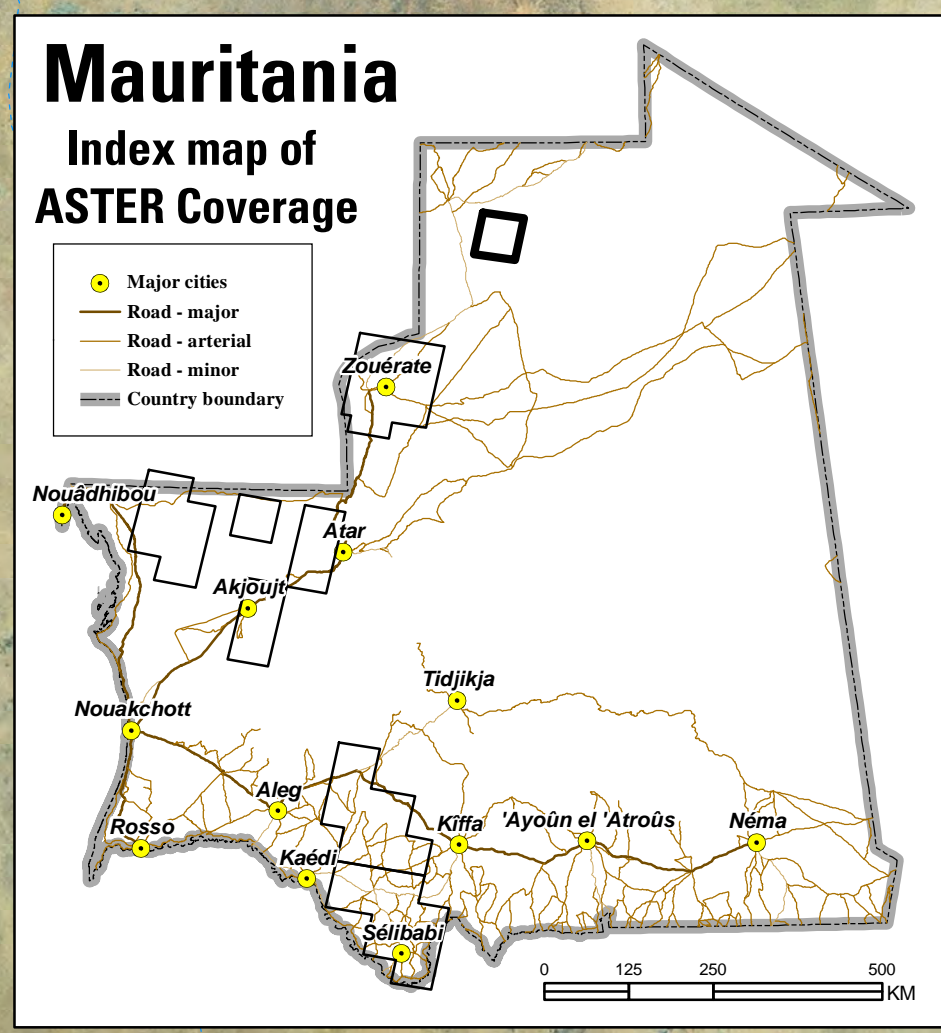


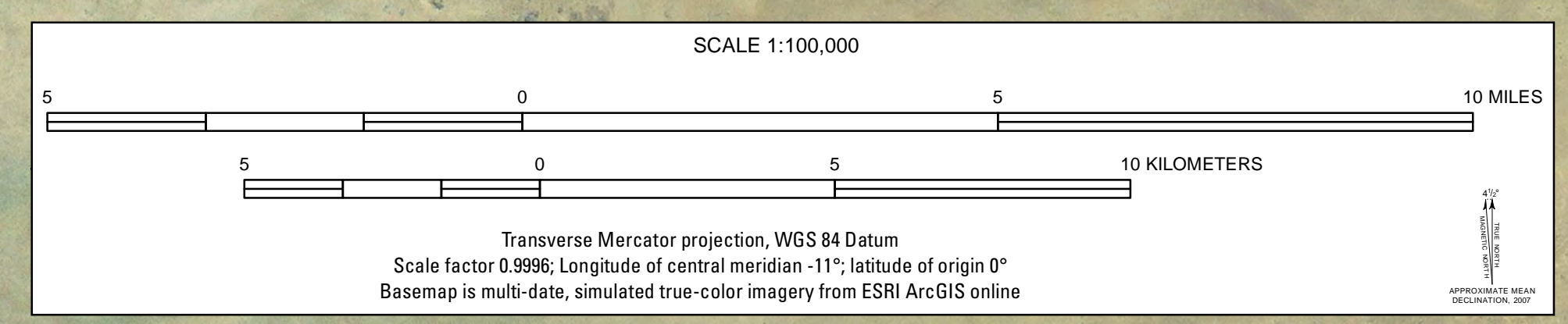
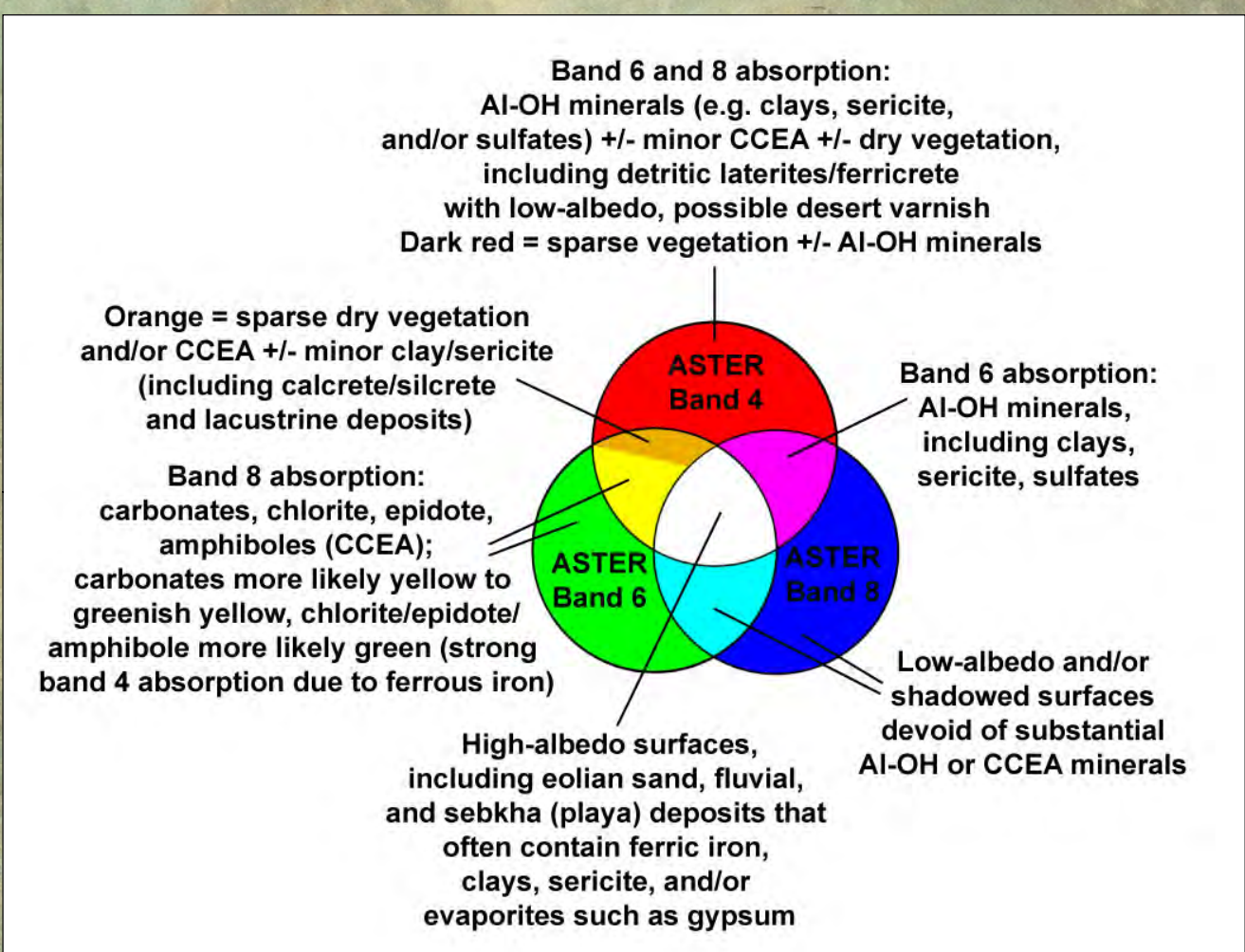
Area 6 - Gleibat Tenebdar-Tourassin - ASTER Continuous-Tone Map of SWIR Mineral Groups

-11°



Explanation	
Mineral occurrences	
●	Arsenic
●	Asbestos
●	Barium
●	Beryllium
●	Bituminous shales
●	Chromium
●	Copper
●	Fluorine
◆	Gem
●	Gold
■	Granite
●	Gypsum
●	Iron
■	Kaolin
■	Lead
■	Manganese
▲	Marble
▲	Molybdenum
▲	Nickel
▲	Oil
▲	Organic matter
▲	Ornamentation material
▲	Peat
▲	Phosphorus
◆	Rare Earth
●	Salt
●	Strontium
●	Sulfur
●	Thorium
●	Tin
●	Titanium
●	Tungsten
★	Uranium
★	Wollastonite
★	Zinc
—	Stream - permanent
---	Stream - intermittent

Explanation for ASTER Mineral Group Map



This map was produced as part of the "Second Projet de Renforcement Institutionnel du Secteur Minier (PRISM II)" co-financed by the Government of Mauritania and the World Bank (Credit No. IDA-38100 MAU).

-11°