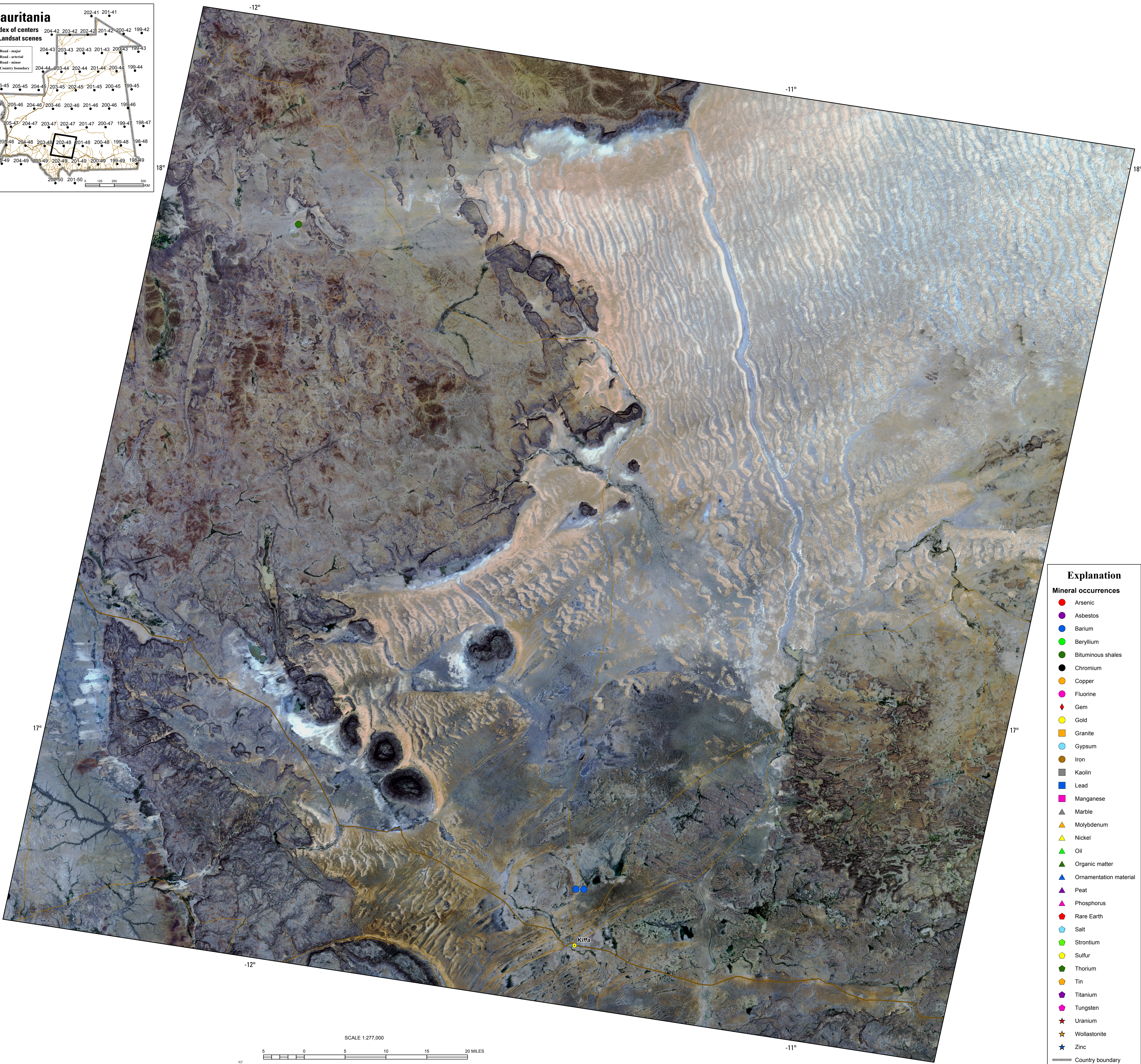
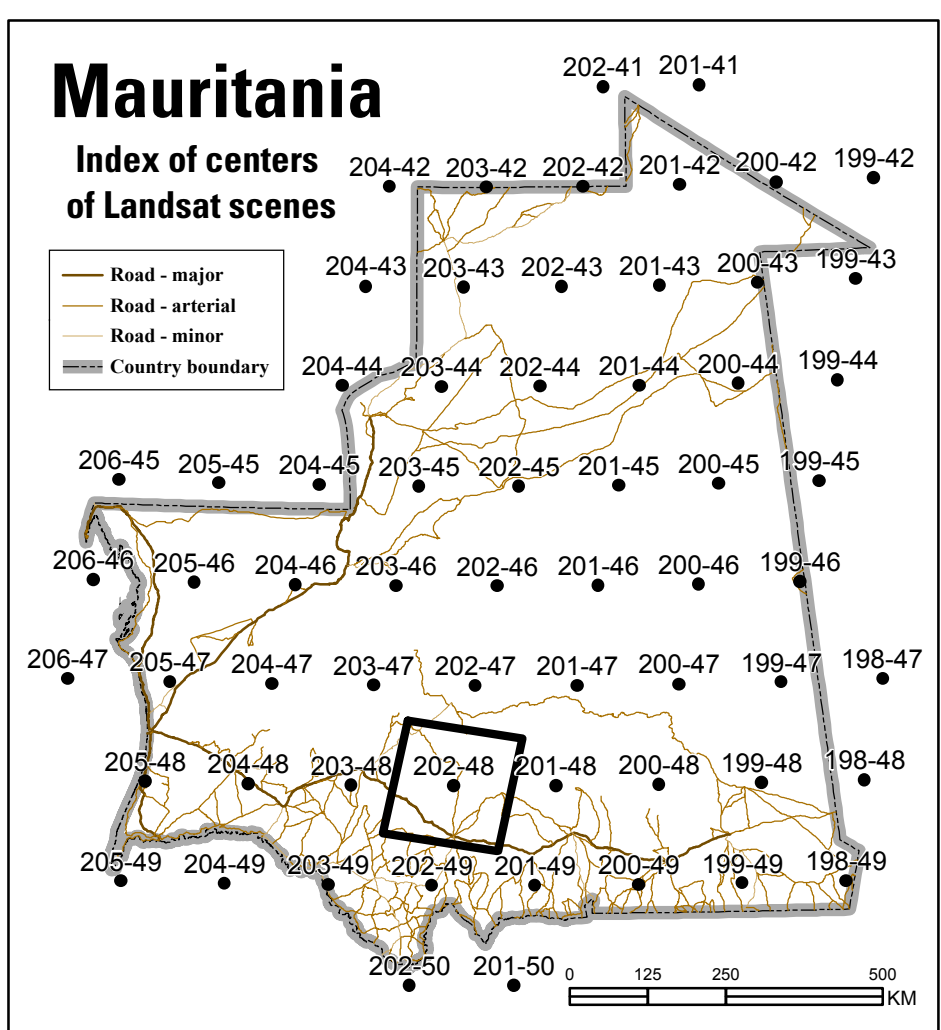


## Landsat True-Color Composite, Path 202 / Row 48



- # Explanation
- ## Mineral occurrences
- Arsenic
  - Asbestos
  - Barium
  - Beryllium
  - Bituminous shales
  - Chromium
  - Copper
  - Fluorine
  - ◆ Gem
  - Gold
  - Granite
  - Gypsum
  - Iron
  - Kaolin
  - Lead
  - Manganese
  - ▲ Marble
  - ▲ Molybdenum
  - ▲ Nickel
  - ▲ Oil
  - ▲ Organic matter
  - ▲ Ornamentation material
  - ▲ Peat
  - ▲ Phosphorus
  - ◆ Rare Earth
  - Salt
  - Strontium
  - Sulfur
  - Thorium
  - Tin
  - Titanium
  - Tungsten
  - ★ Uranium
  - ★ Wollastonite
  - ★ Zinc
- ▬ Country boundary
  - ▬ Road - major
  - ▬ Road - arterial
  - ▬ Road - minor
  - ▬ Railroad
  - Major cities

This map was produced as part of the "Second Projet de Renforcement Institutionnel du Secteur Minier (PRISM II)" co-financed by the Government of Mauritania and the World Bank (Credit No. IDA-38100 MAU).

