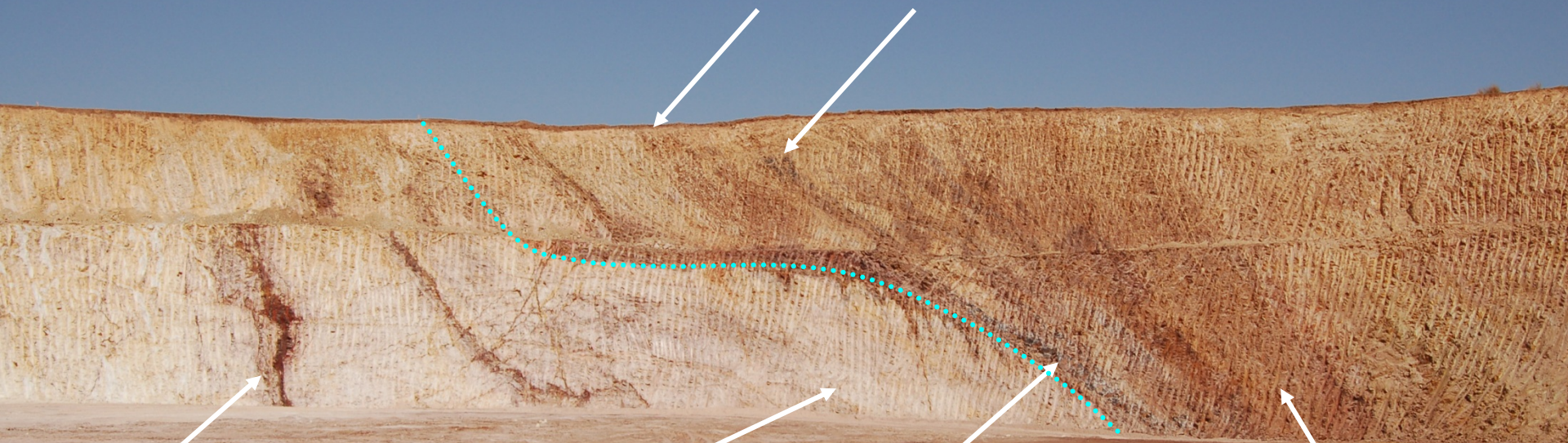


**supergene oxidation to kaolinite along sulfide-bearing fractures
(beneath clay-poor 0.5 m lithosol regolith and eolian sediments with trace clay)
- narrow Au soil anomaly**



**massive sulfide vein,
300-500 ppb Au**

**shear zone breccia
in argillized "felsite"**

**epigenetic high-grade ore
(100-200 ppb Au)
with quartz, sulfides,
hematite along
flattened reverse
fault**

**disseminated ore in
"epiclastite" of
hanging wall with
goethite/hematite and
splayed quartz veins
(lower grade ore) cut
by late sericite veins**