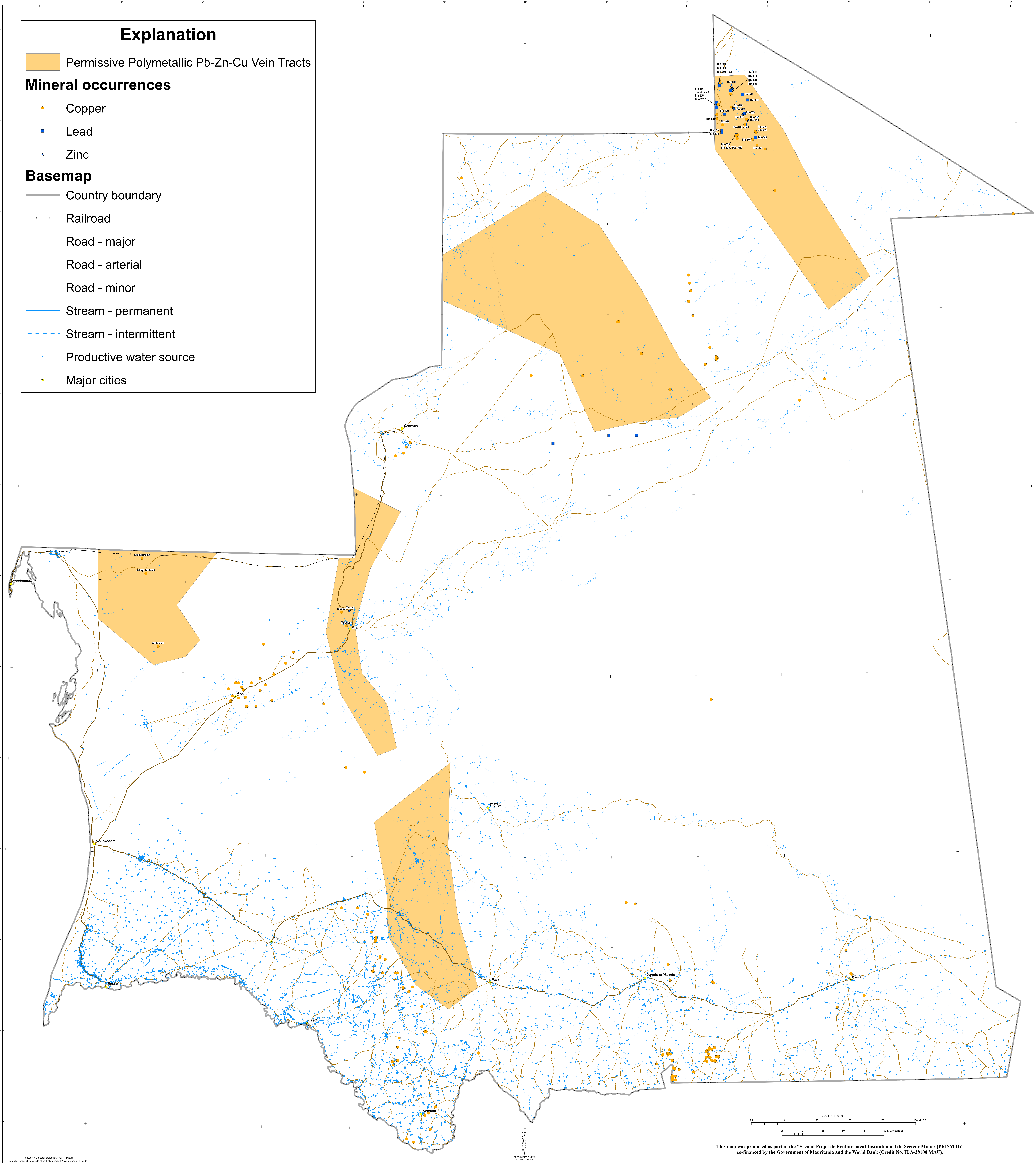


Permissive Tracts for Polymetallic Lead-Zinc-Copper Vein Deposits in Mauritania



Explanation

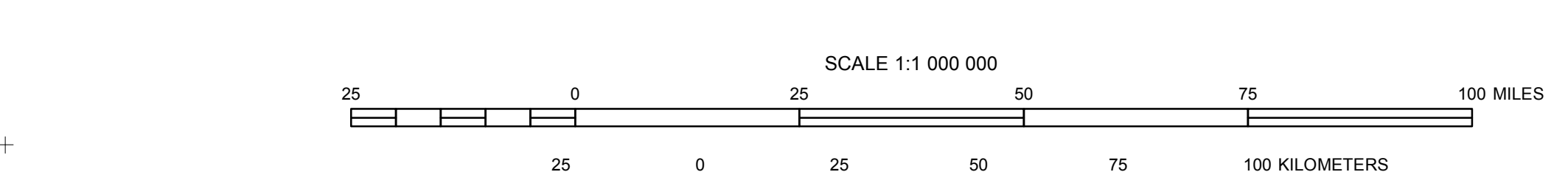
- Permissive Polymetallic Pb-Zn-Cu Vein Tracts

Mineral occurrences

- Copper
- Lead
- Zinc

Basemap

- Country boundary
- Railroad
- Road - major
- Road - arterial
- Road - minor
- Stream - permanent
- Stream - intermittent
- Productive water source
- Major cities



This map was produced as part of the "Second Projet de Renforcement Institutionnel du Secteur Minier (PRISM II)" co-financed by the Government of Mauritania and the World Bank (Credit No. IDA-38100 MAU).

Transverse Mercator projection, UTM 30N Datum
Scale factor 0.9996, longitude of central meridian 17° W, latitude of origin 0°

APPROXIMATE MEAN
EQUINOXIAL YEAR
2011