

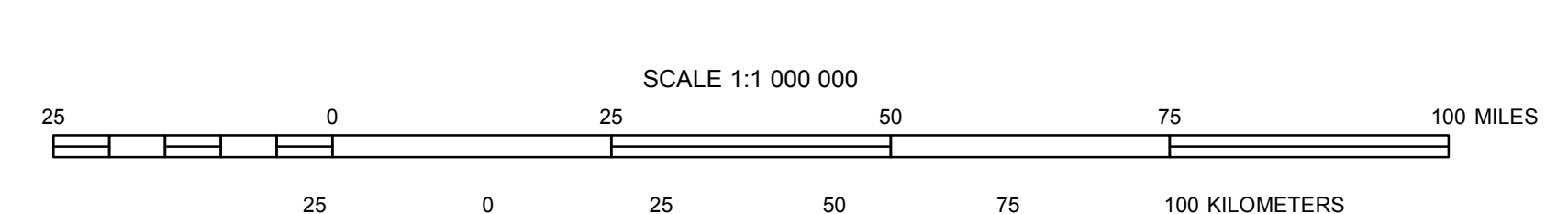
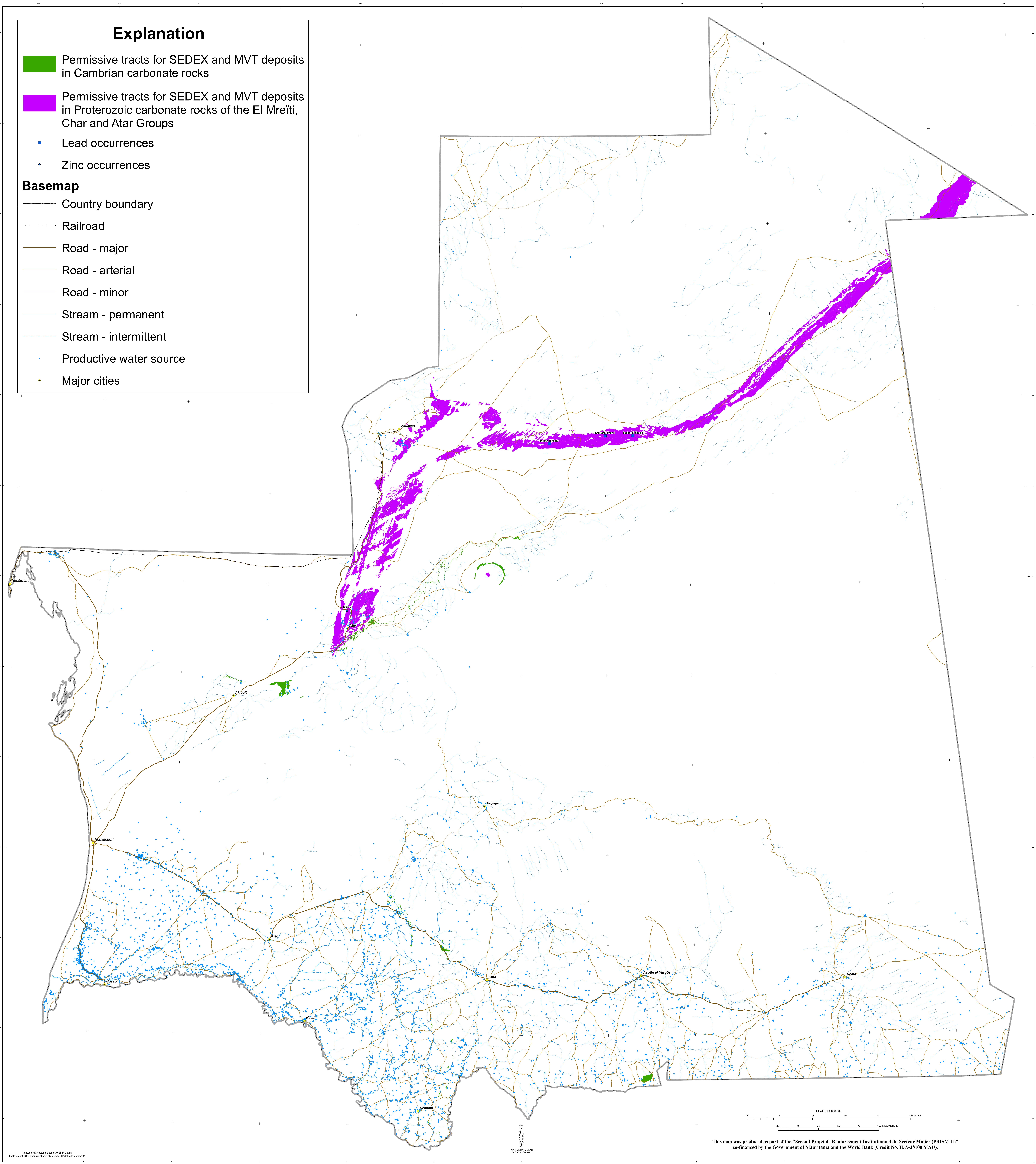
Permissive Tracts for Sediment-Hosted Lead-Zinc-Silver Deposits in Mauritania

**Explanation**

- Permissive tracts for SEDEX and MVT deposits in Cambrian carbonate rocks
- Permissive tracts for SEDEX and MVT deposits in Proterozoic carbonate rocks of the El Mreïti, Char and Atar Groups
- Lead occurrences
- Zinc occurrences

**Basemap**

- Country boundary
- Railroad
- Road - major
- Road - arterial
- Road - minor
- Stream - permanent
- Stream - intermittent
- Productive water source
- Major cities



This map was produced as part of the "Second Projet de Renforcement Institutionnel du Secteur Minier (PRISM II)" co-financed by the Government of Mauritania and the World Bank (Credit No. IDA-38100 MAU).

Transverse Mercator projection, UTM 30N datum  
 Spheroid: GRS80, lengths of central meridian: 117,564,645.47

APPROXIMATE MEAN  
 EQUINOXIAL YEAR