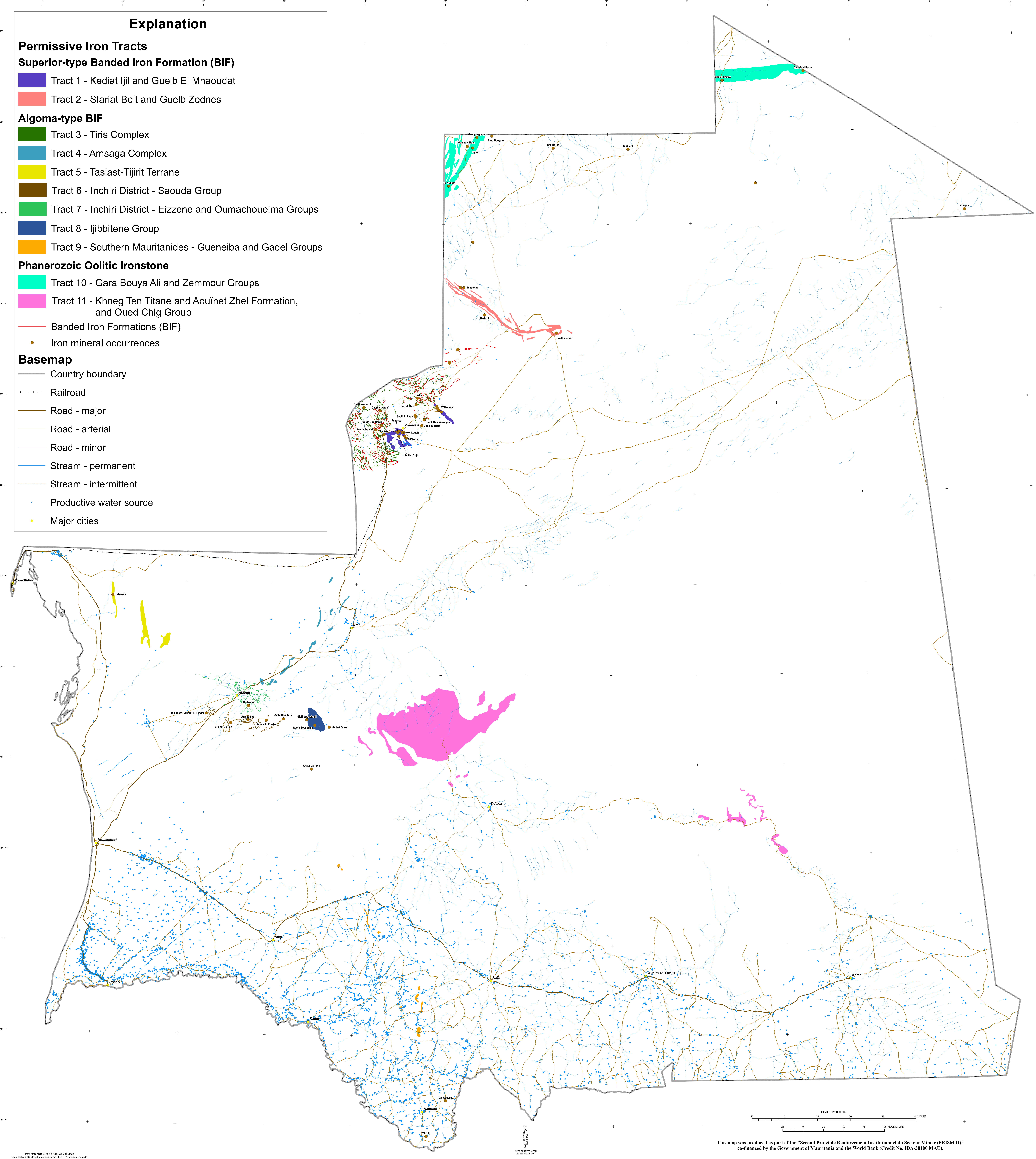


Permissive Tracts for Algoma-, Superior-, and Oolitic-type Iron Deposits in Mauritania



**Explanation**

**Permissive Iron Tracts**

**Superior-type Banded Iron Formation (BIF)**

- Tract 1 - Kediat Ijil and Guelb El Mhaoudat
- Tract 2 - Sfiariat Belt and Guelb Zednes

**Algoma-type BIF**

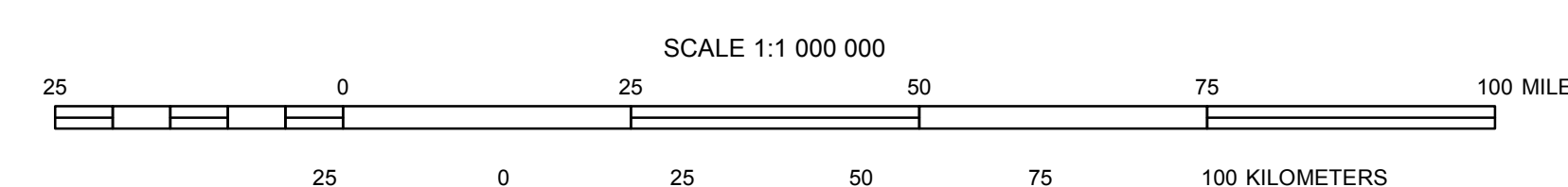
- Tract 3 - Tiris Complex
- Tract 4 - Amsaga Complex
- Tract 5 - Tasiast-Tijirit Terrane
- Tract 6 - Inchiri District - Saouda Group
- Tract 7 - Inchiri District - Eizzene and Oumachoueima Groups
- Tract 8 - Ijibbitene Group
- Tract 9 - Southern Mauritanides - Gueneiba and Gadel Groups

**Phanerozoic Oolitic Ironstone**

- Tract 10 - Gara Bouya Ali and Zemmour Groups
- Tract 11 - Khneg Ten Titane and Aouinet Zbel Formation, and Oued Chig Group
- Banded Iron Formations (BIF)
- Iron mineral occurrences

**Basemap**

- Country boundary
- Railroad
- Road - major
- Road - arterial
- Road - minor
- Stream - permanent
- Stream - intermittent
- Productive water source
- Major cities



This map was produced as part of the "Second Projet de Renforcement Institutionnel du Secteur Minier (PRISM II)" co-financed by the Government of Mauritania and the World Bank (Credit No. IDA-38100 MAU).