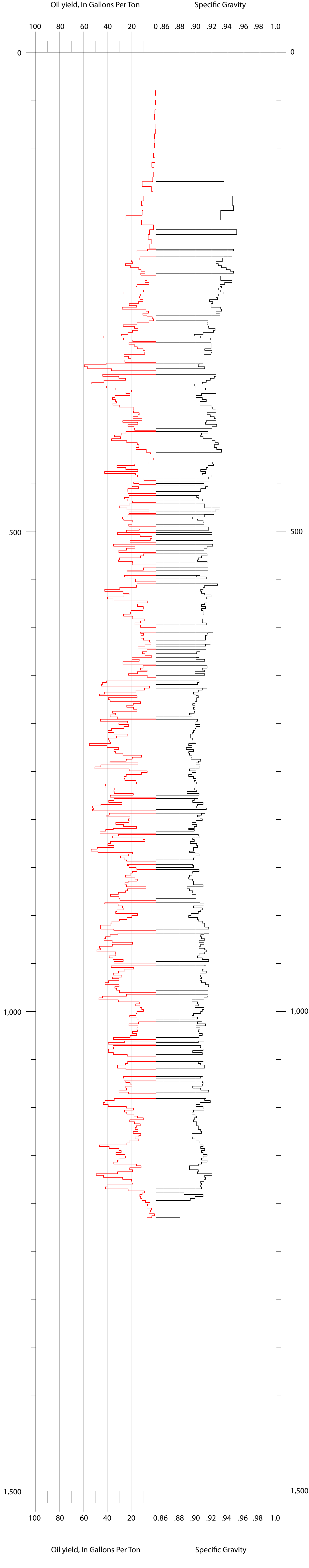


C0217  
Cameron Engineers  
CE-709  
Sec. 33, T. 1 S., R. 99 W.



Oil yield, In Gallons Per Ton

Specific Gravity

1,500

1,500

1,000

1,000

500

500

0

0

100

80

60

40

20

0.86

.88

.90

.92

.94

.96

.98

1.0

Oil yield, In Gallons Per Ton

Specific Gravity