

Site: OD 434

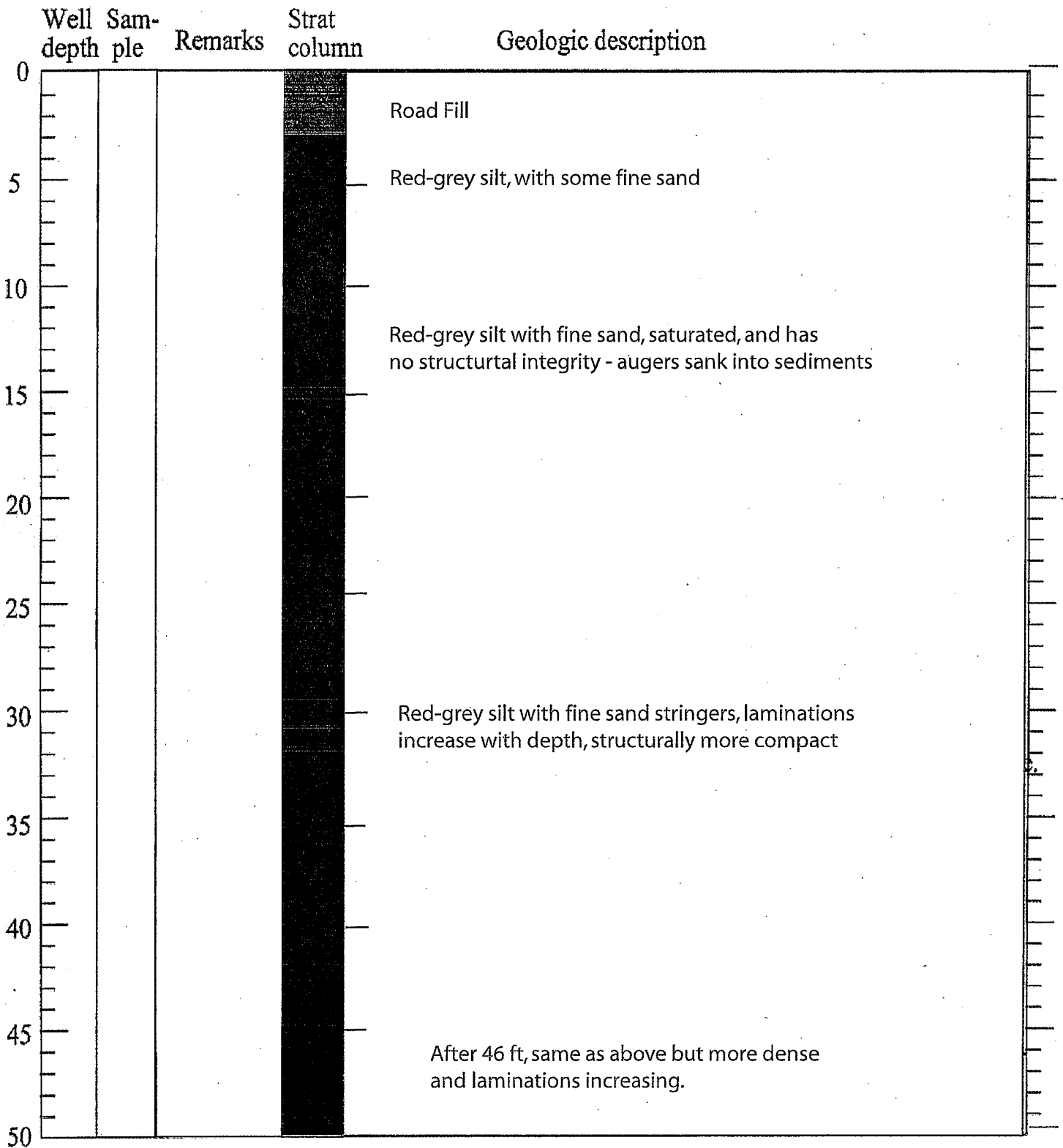
Date drilled: October, 1993

Location: East side of Otisco Rd. bridge at bus turnaround

Depth of hole: 79 ft

Elevation top of casing:

Screened interval: Open ended Casing type: Steel



Site: OD 434

Date drilled: October, 1993

Location: Eastside of Otisco Rd. bridge at bus turnaround

Depth of hole: 79 ft

Elevation top of casing:

Screened interval: Open ended Casing type: Steel

Well depth	Sample	Remarks	Strat column	Geologic description
50				
55				
60				Same as above becoming more dense and laminations increase.
65				
70				
75				Red-grey silt with some clay and fine sand, unit appears to be laminated.
80				NOTE: When rods removed from hole, a popping sound was heard, followed by a rapid flow of water from well, which slowed. Rods reinserted and sand had heaved over 30 feet inside well. Well capped and pressure gage added.
85				
90				
95				
113				