

Site: OD 435

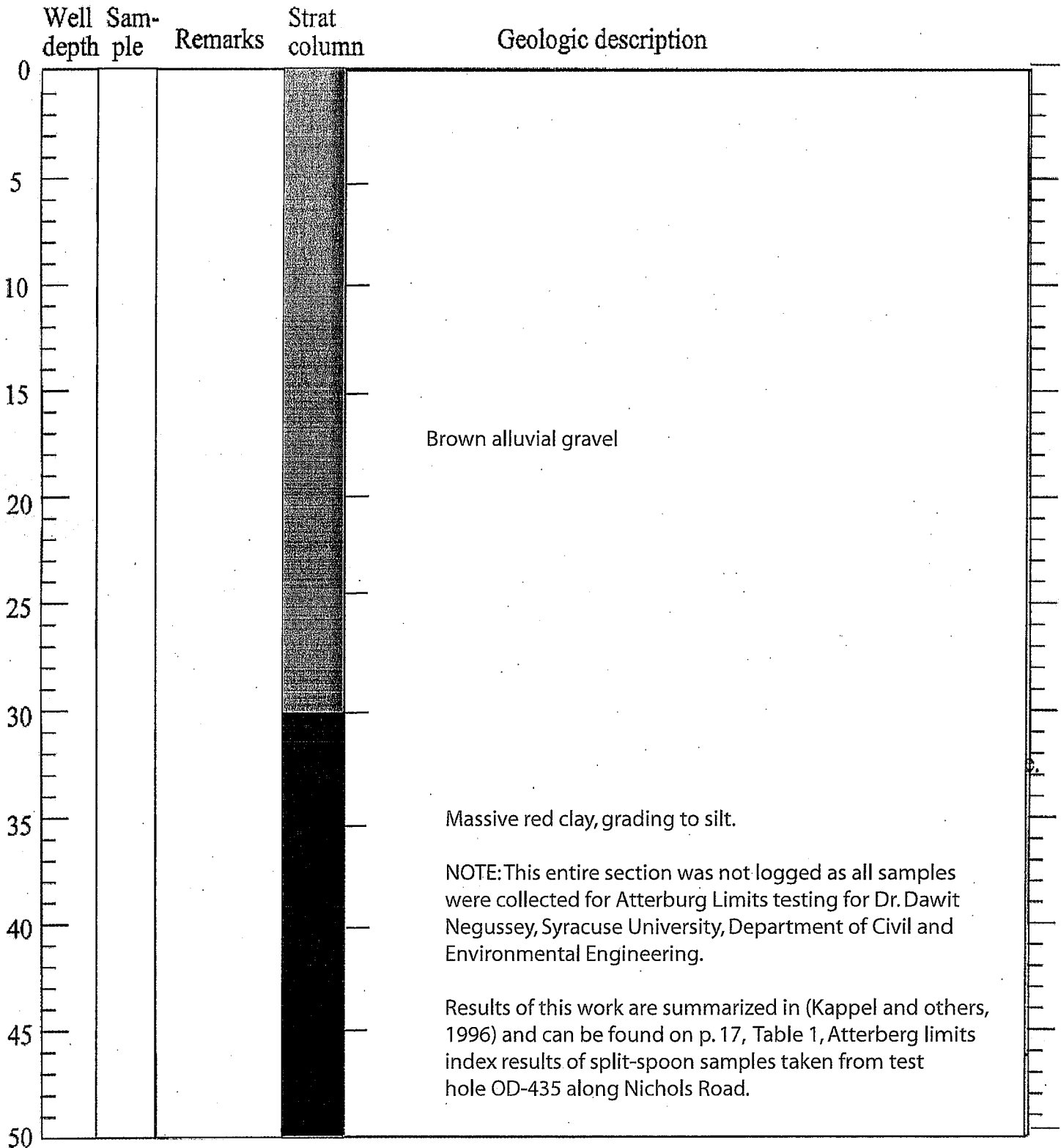
Date drilled: Late October, 1993

Location: Northeast side of Nichols Rd. bridge

Depth of hole: 110 ft

Elevation top of casing:

Screened interval: Open ended Casing type: Steel



Site: OD 435

Date drilled: Late October, 1993

Location: Eastside of Otisco Rd. bridge at bus turnaround

Depth of hole: 110 ft

Elevation top of casing:

Screened interval: Open ended

Casing type: Steel

