

Site: Rouge area Test Well #1

Date drilled: August 25, 2010

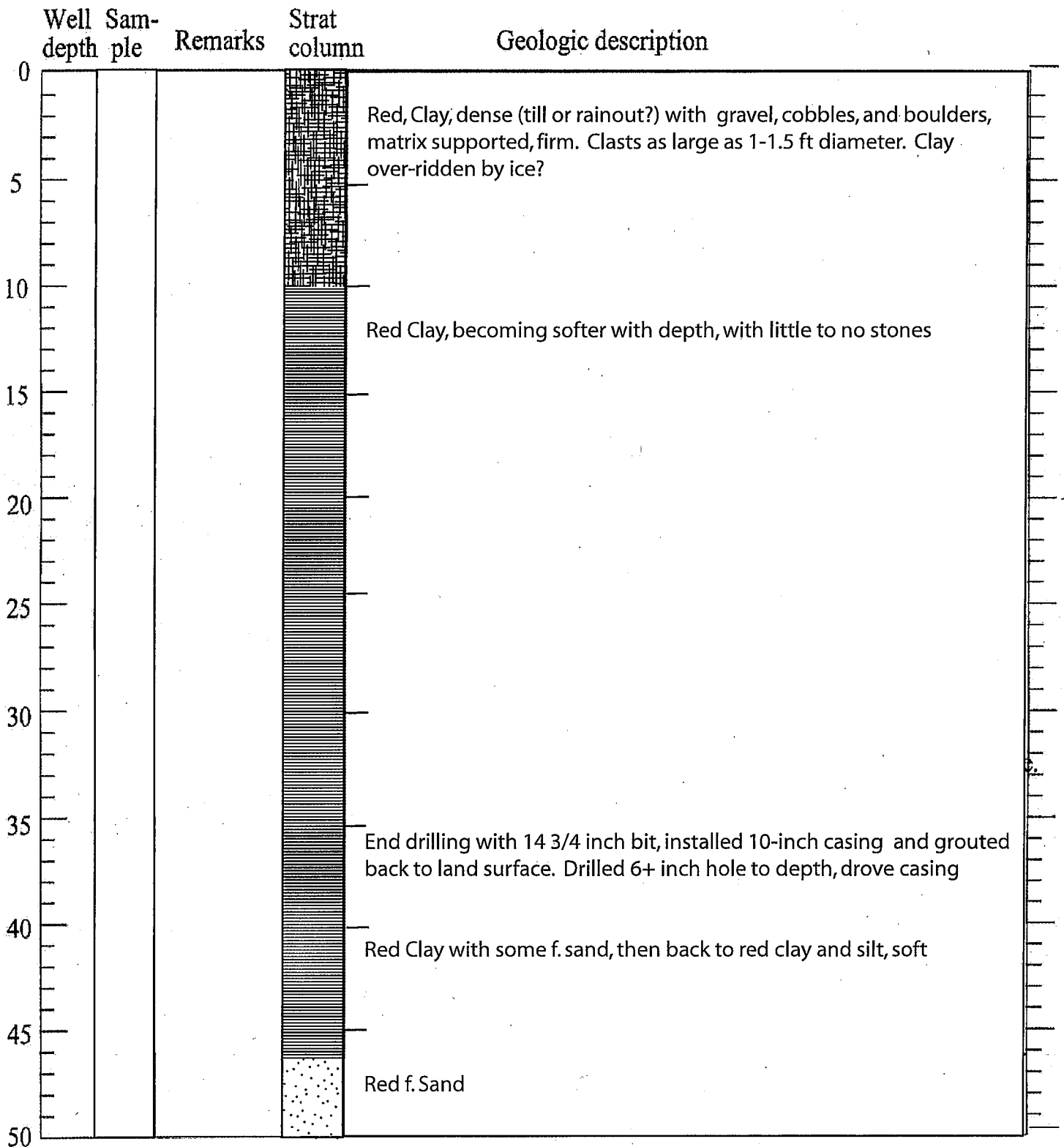
Location: East side of MDA spillway

Depth of hole: 106 ft

Elevation top of casing:

Screened interval: None

Casing type: Steel - grouted to top at end of drilling



Site: Rouge area Test Well #1

Date drilled: August 25, 2010

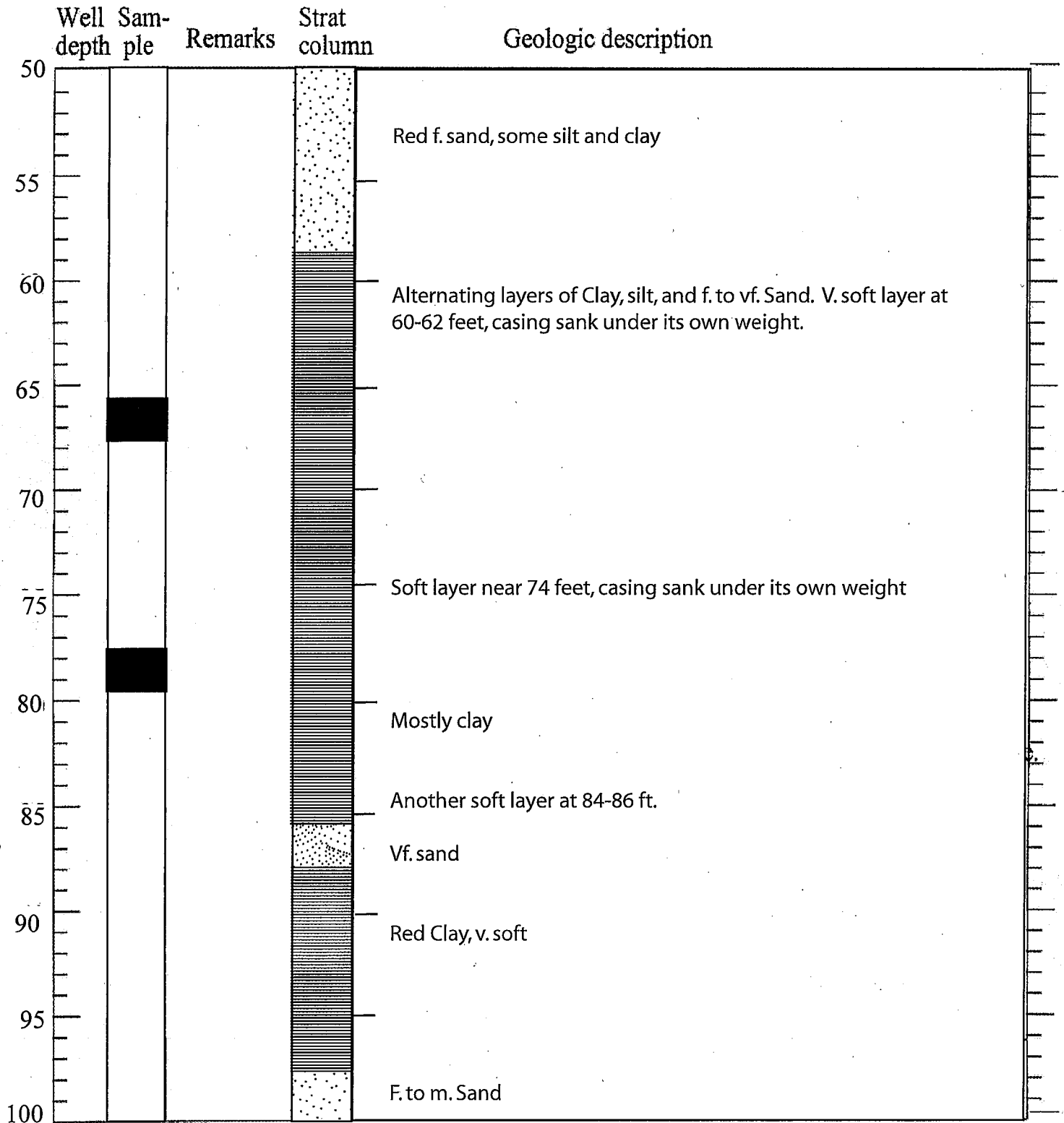
Location: East side of MDA spillway

Depth of hole: 106 ft

Elevation top of casing:

Screened interval: None

Casing type: Steel - grouted to top at end of drilling



Site: Rouge area Test Well #1

Date drilled: August 25, 2010

Location: East side of MDA spillway

Depth of hole: 106 ft

Elevation top of casing:

Screened interval: None

Casing type: Steel - grouted to top at end of drilling

| Well depth | Sample | Remarks | Strat column | Geologic description |
|------------|--------|---------|--------------|---|
| 100 | | | | Small layer of red Clay |
| 105 | | | | Dense red silty Clay with cobbles and stones from 102 to 107 ft. (Till) Boulder 102.5-103.5 and one small clean silt clay layer at ~ 104-105 ft. |
| 110 | | | | Bottom of casing at 106 ft, no aquifer encountered, casing was grouted to land surface. |
| 115 | | | | |
| 120 | | | | |
| 125 | | | | |
| 130 | | | | |
| 135 | | | | |
| 140 | | | | |
| 145 | | | | |
| 150 | | | | |