

Site: Rouge area Test Well #2

Date drilled: August 27, 2010

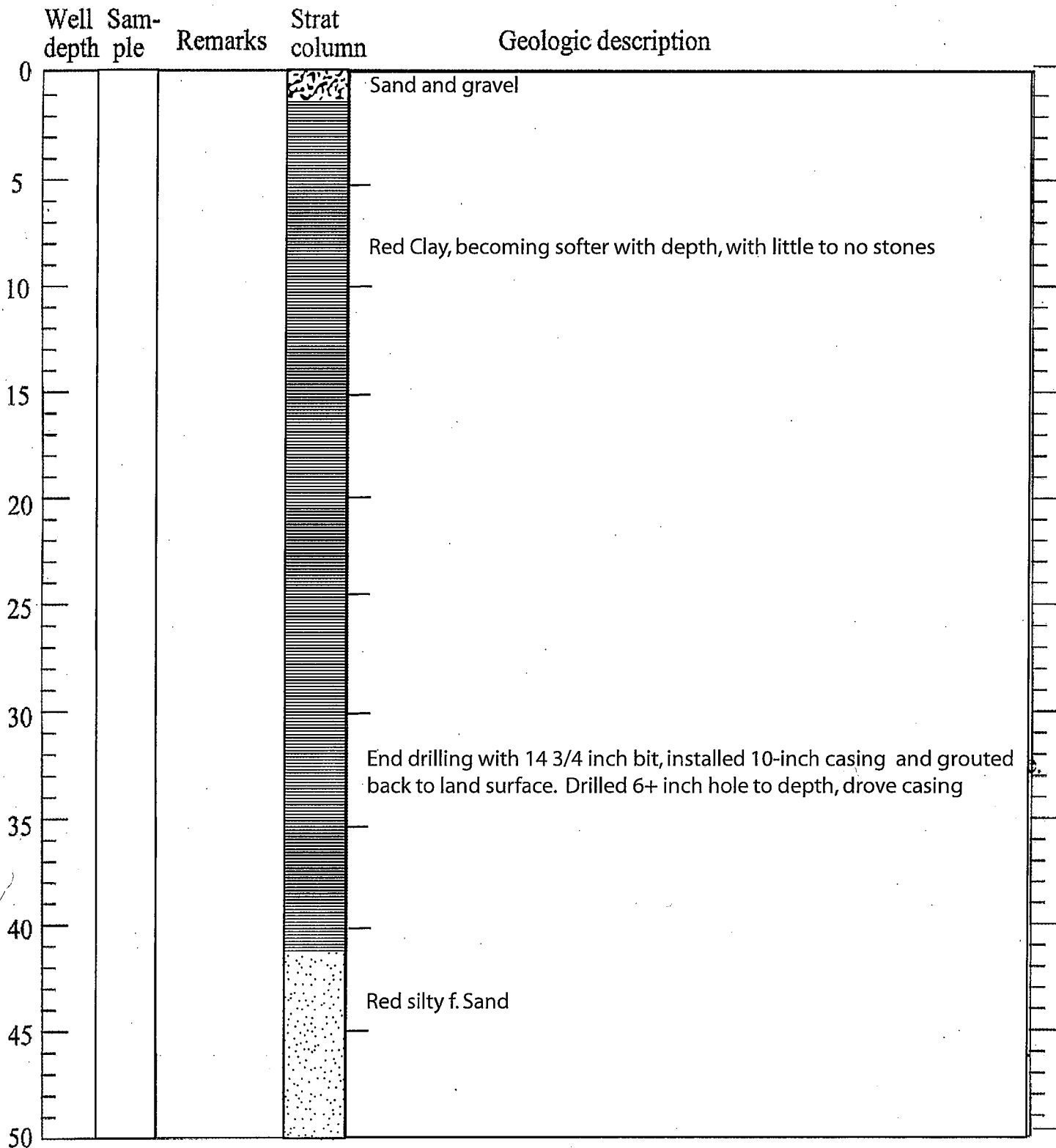
Location: West side of MDA spillway

Depth of hole: 109 ft

Elevation top of casing: ~572

Screened interval: 95.5-100 ft

Casing type: Steel



Site: Rouge area Test Well #2

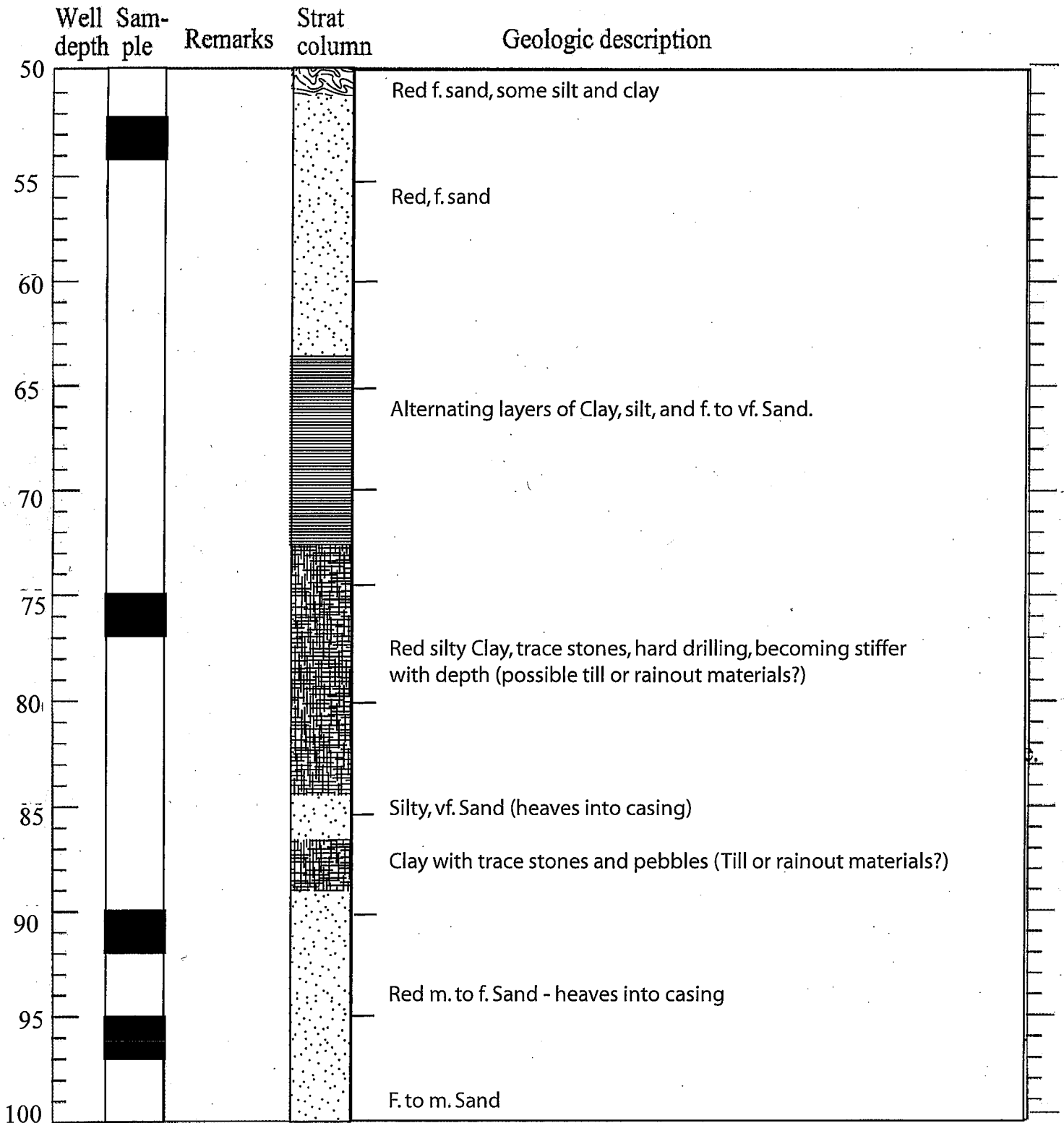
Date drilled: August 27, 2010

Location: West side of MDA spillway

Depth of hole: 109 ft

Elevation top of casing: ~572

Screened interval: 95.5-100 ft : Casing type: Steel



Site: Rogue area Test Well #2

Date drilled: August 27, 2010

Location: West side of MDA spillway

Depth of hole: 109 ft

Elevation top of casing: ~572

Screened interval: 95.5-100 ft Casing type: Steel

