

Onshore elevation data collected by Earth Eye in 2010 for San Francisco State University and U.S. Geological Survey (available at <http://ned.usgs.gov/>). Offshore shaded-relief bathymetry from map on sheet 2, this report. California's State Waters limit from NOAA Office of Coast Survey. Universal Transverse Mercator projection, Zone 10N.

Seafloor Character, Offshore of Bolinas Map Area, California
By
Mercedes D. Erdey and Guy R. Cochrane
2015

Seafloor character mapped in 2013. Bathymetric contours by Mercedes D. Erdley, 2012
GIS database and digital cartography by Mercedes D. Erdley and Nadine E. Golden
Manuscript approved for publication July 21, 2015

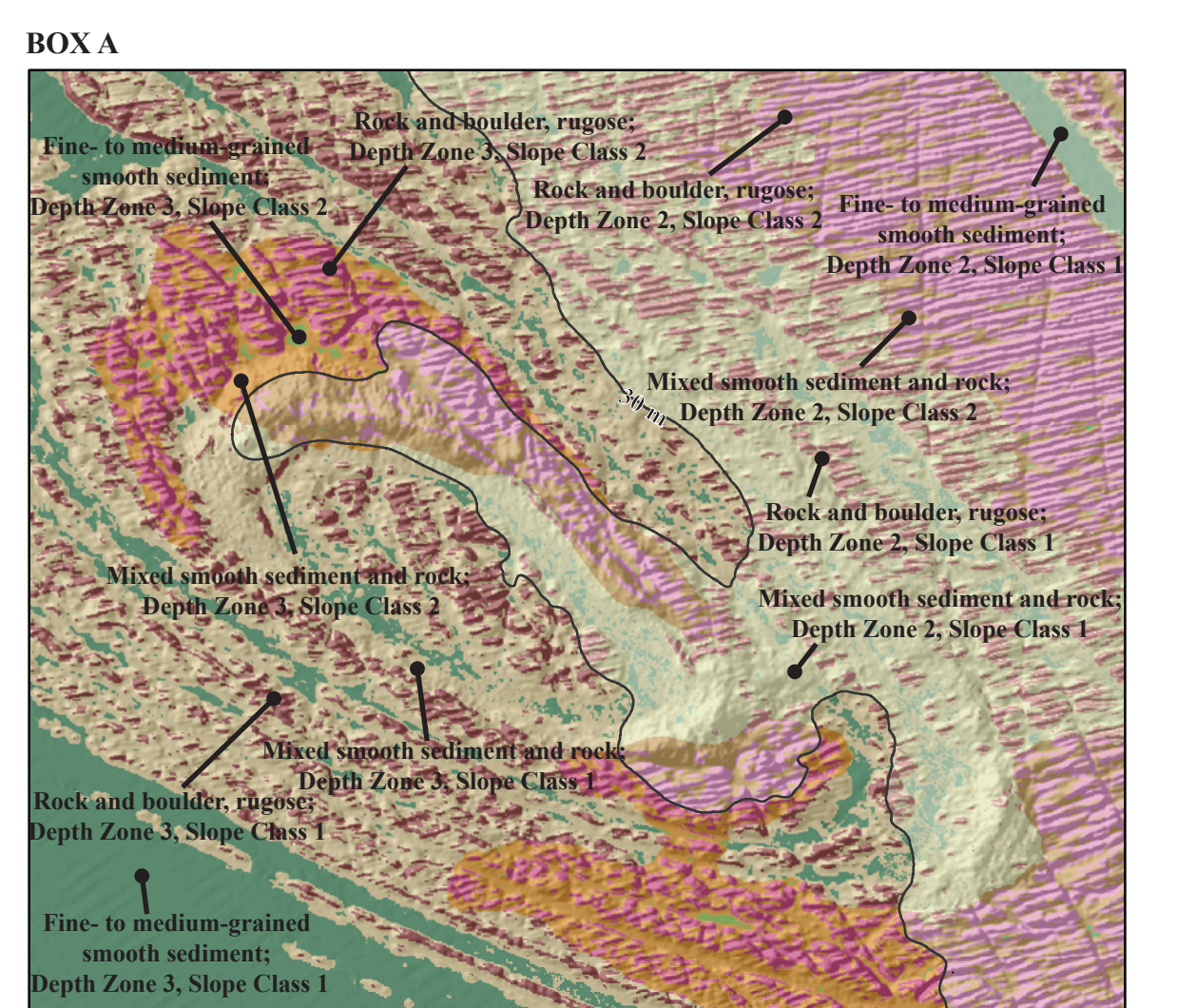
[illegible]

Figure 1. Detailed view of substrate classes mapped offshore, west of Bolinas (see Box A, on map, for location): Depth Zone 2 (intertidal to 30 m), Depth Zone 3 (30 to 100 m), Slope Class 1 (0°–5°), and Slope Class 2 (5°–30°). Fine- to medium-grained smooth sediment is shown in shades of green; mixed smooth sediment and rock is shown in shades of tan; and rock is shown in shades of pink. Bathymetric contour (30 m) added for depth reference.

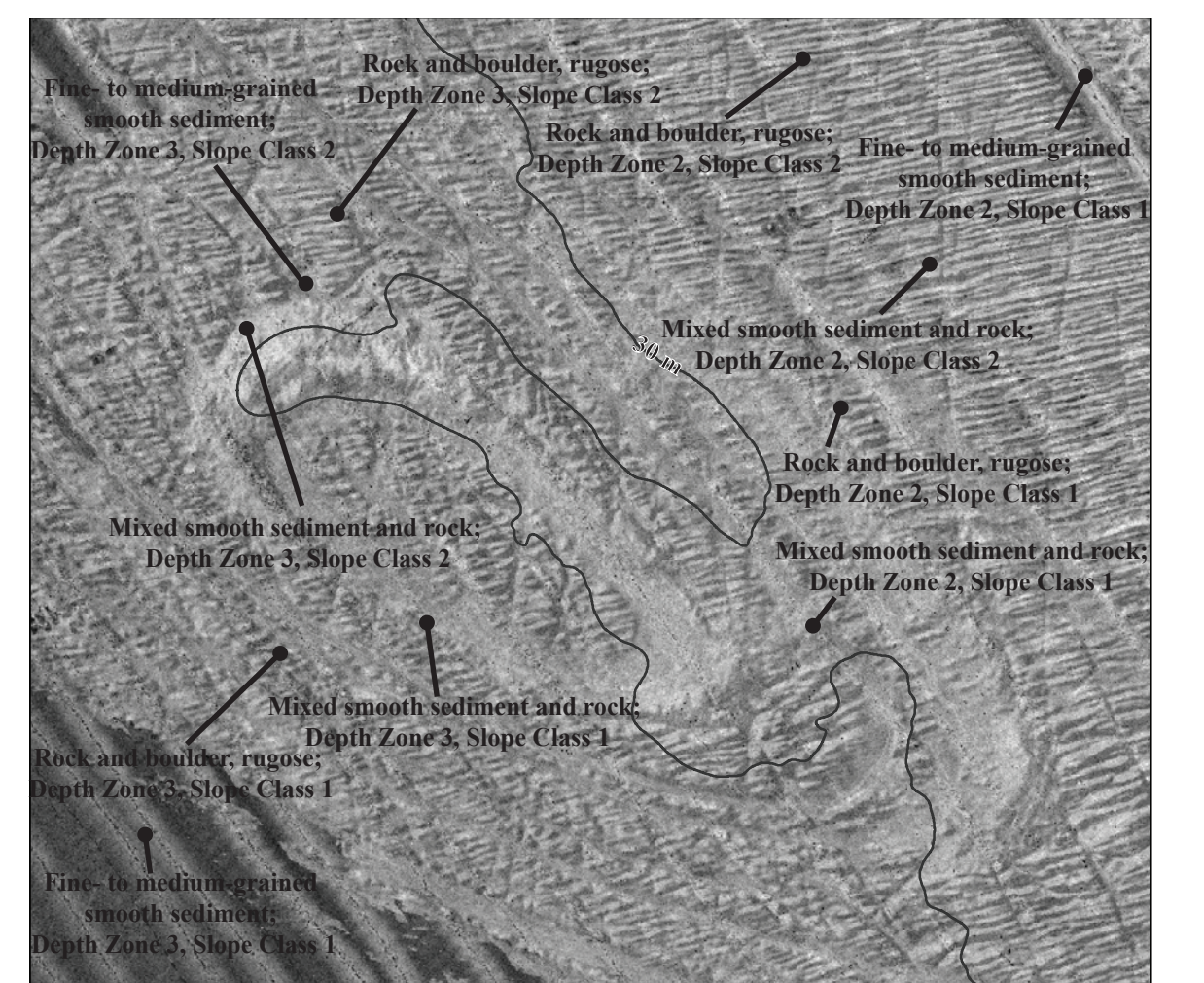


Figure 2. Acoustic-backscatter image (see sheet 3) draped over shaded-relief bathymetry (see sheet 2) for same area as figure 1 (Box A on map). Brighter areas indicate coarse-grained, rough, or hard seafloor; darker areas indicate unconsolidated (loosely packed) sediment. Northwest-southeast-trending light-gray lines are data-collection artifacts. Interpreted substrate classes from Figure 1 included for comparison.

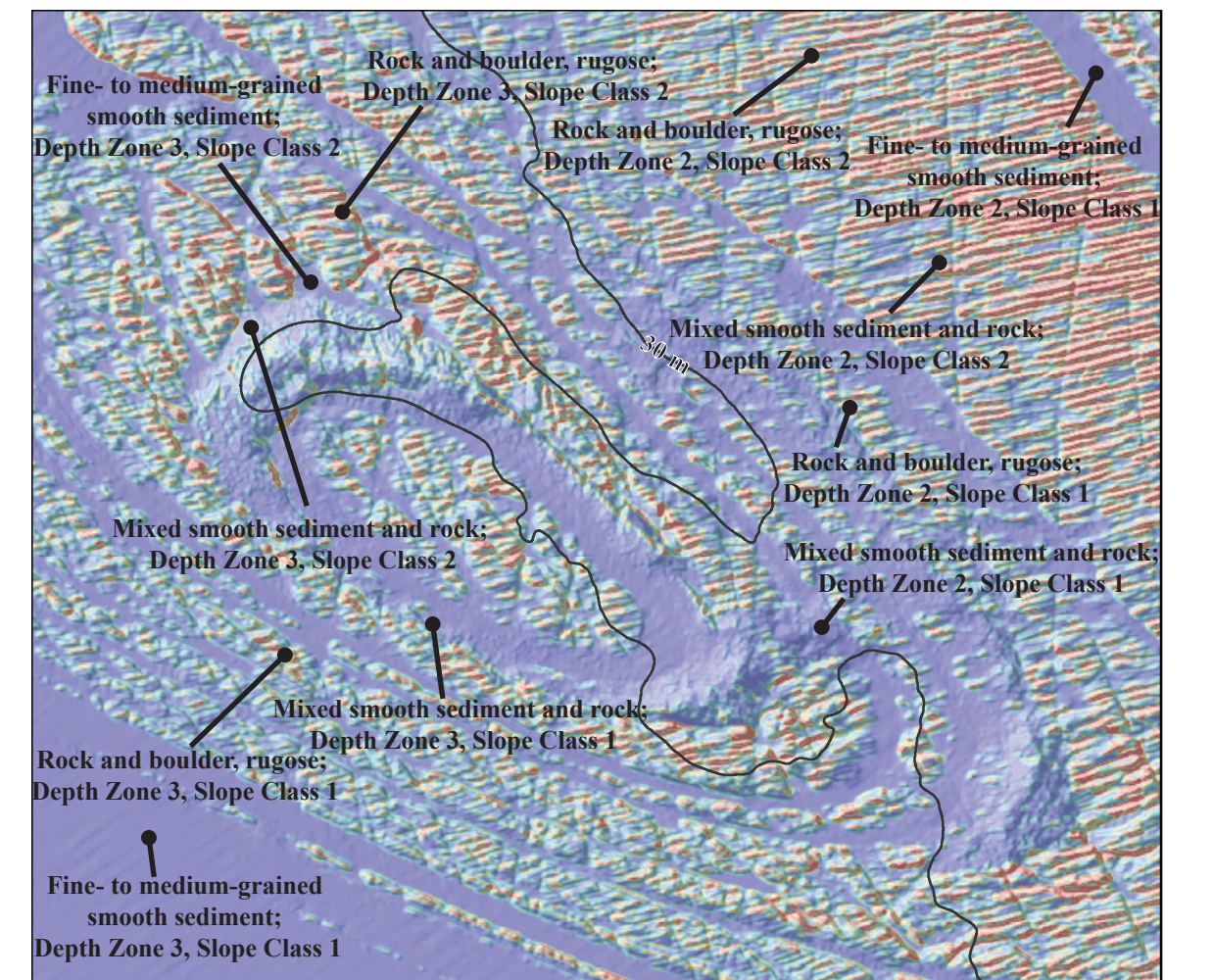
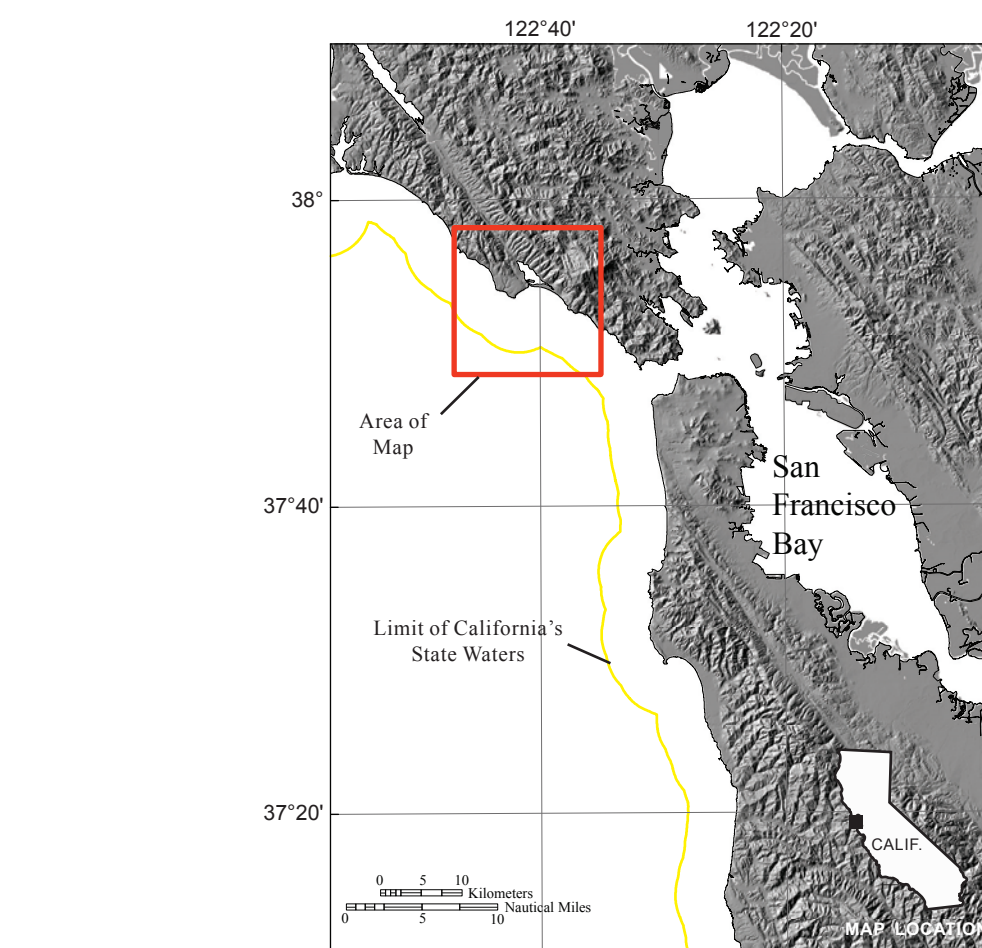


Figure 3. Rugosity (characterization of roughness derived from bathymetry) draped over shaded-relief bathymetry (see sheet 2) for same area as figure 1 (Box A on map). Rugosity values are displayed in muted "rainbow" color spectrum that ranges from purple (low rugosity) through green (medium rugosity) to red (high rugosity). Interpreted substrate classes from figure 1 included for comparison.



map area: 8.3 km² is in Depth Zone 2, and 0.4 km² is in Depth Zone 3. Medium- to coarse-grained sediment (in scour depressions consisting of material that is coarser than the surrounding seafloor) makes up 3.8 percent (4.2 km²) of the map area: 4.2 km² is in Depth Zone 2, and less than 0.1 km² is in Depth Zone 3 (table 1).

	Total		Depth Zone 2 (water depth 0–30 m)		Depth Zone 3 (water depth 30–100 m)	
	percent	sq km	percent of total	sq km	percent of total	sq km
Fine- to medium-grained smooth sediment	66.1	72.7	51.0	56.1	15.1	16.6
Mixed smooth sediment and rock	22.2	24.5	18.8	20.8	3.4	3.7
Rock and boulder, regne	7.9	8.7	7.5	8.3	0.4	0.4
Medium- to coarse-grained sediment	3.8	4.2	3.8	4.2	<0.1	<0.1

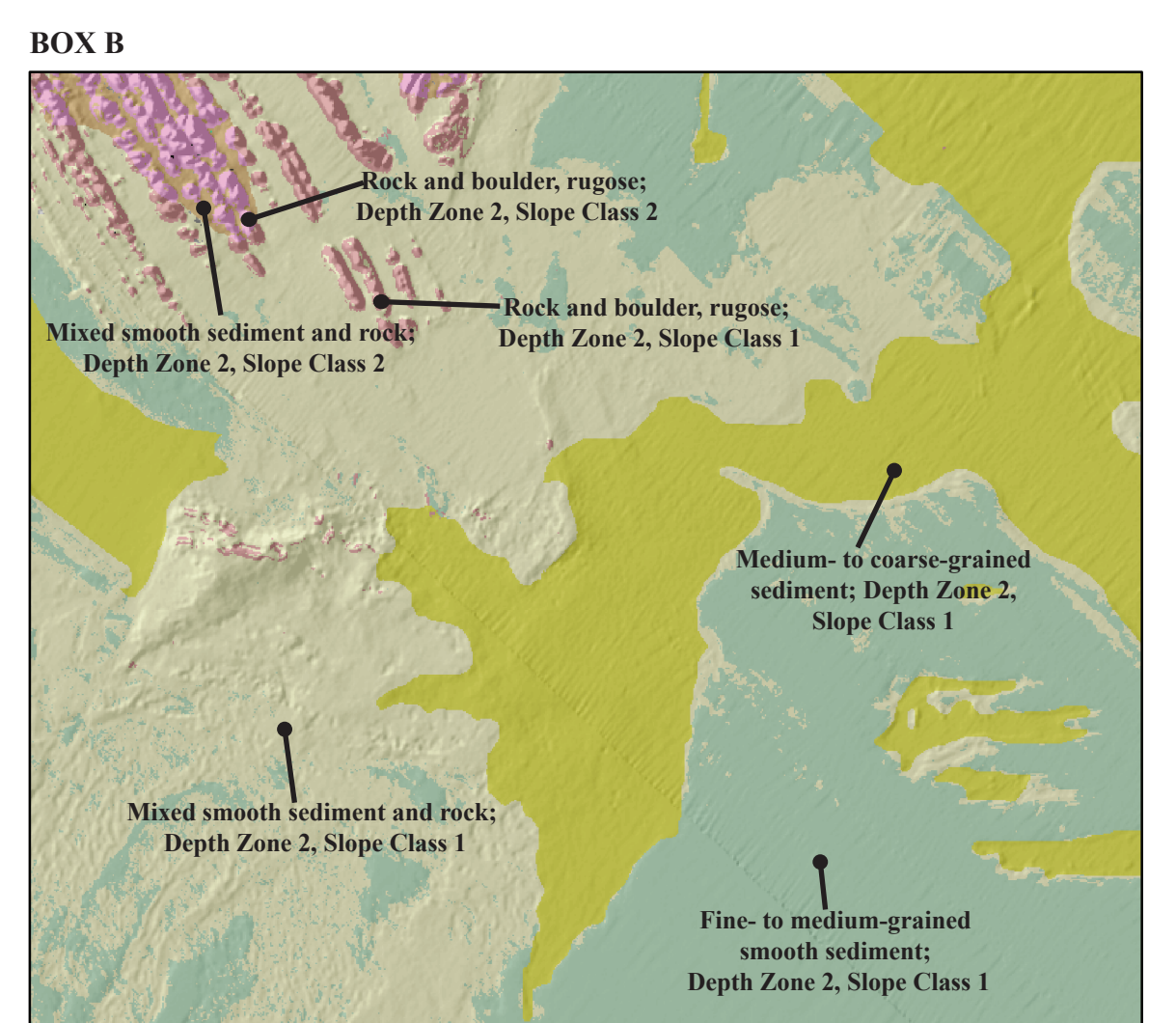


Figure 4. Detailed view of substrate classes mapped offshore of Stinson Beach (see Box B, on map, for location): Depth Zone 2 (intertidal to 30 m), Slope Class 1 (0° – 5°), and Slope Class 2 (5° – 30°). Fine- to medium-grained smooth sediment is shown in shades of green; mixed smooth sediment and rock is shown in shades of tan; rock is shown in shades of pink; and medium- to coarse-grained sediment is shown in shades of yellow.

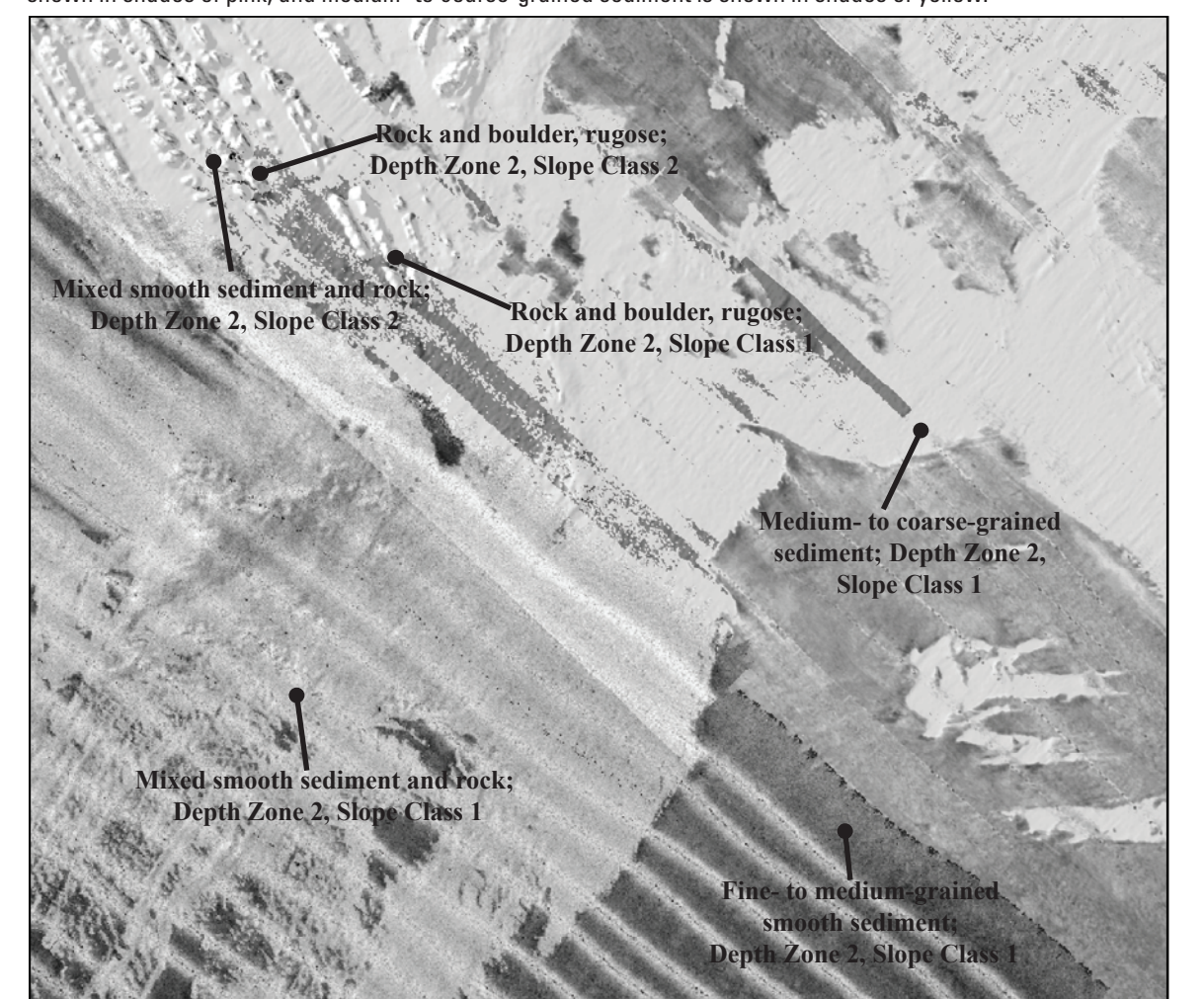


Figure 5. Acoustic-backscatter image (see sheet 3) draped over shaded-relief bathymetry (see sheet 2) for same area as figure 4 (Box B on map). Brighter areas indicate coarse-grained, rough, or hard seafloor; darker areas indicate unconsolidated (loosely packed) sediment. Northwest-southeast-trending light-gray lines are data-collection artifacts. Interpreted substrate classes from figure 4 included for comparison.

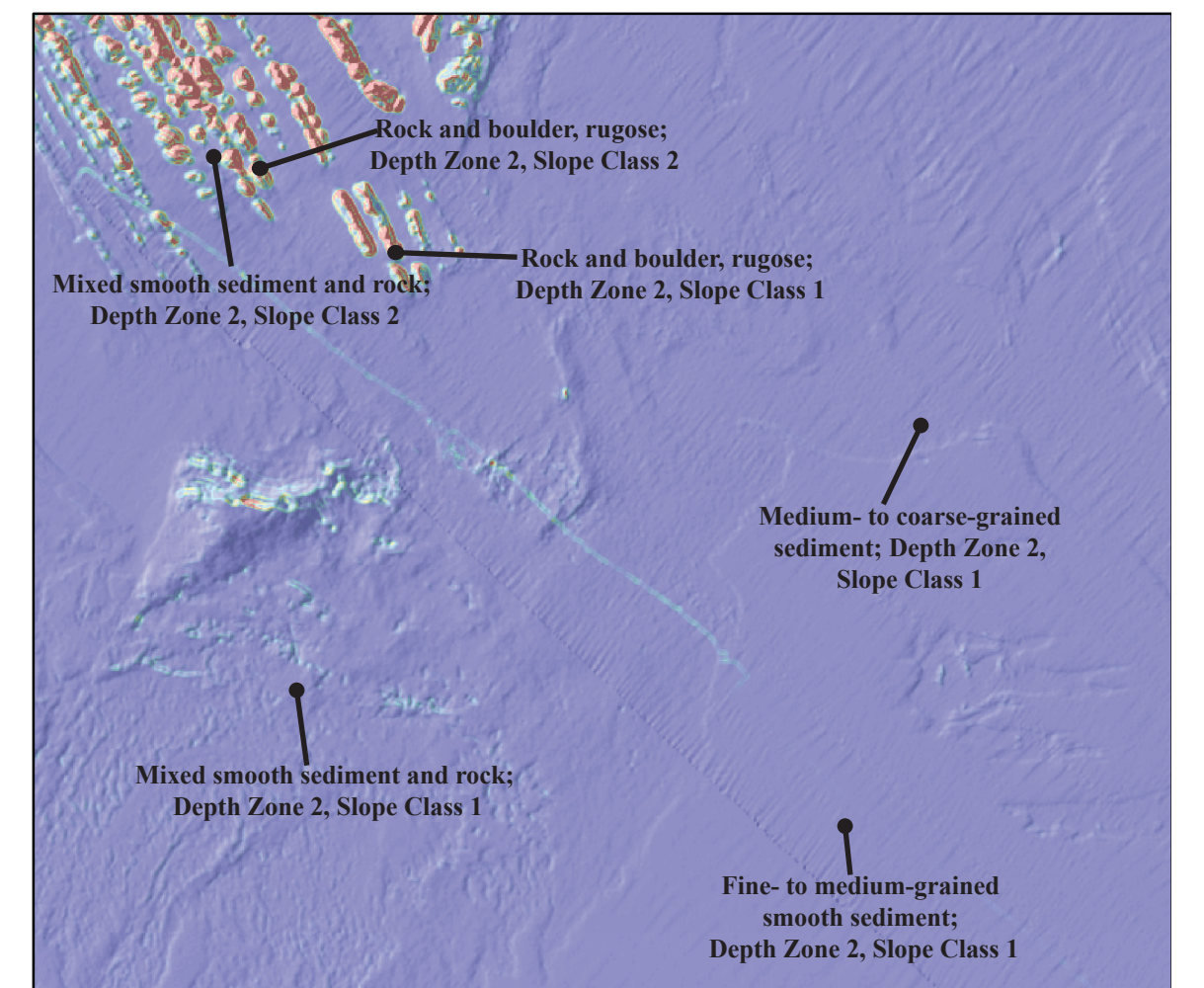


Figure 6. Rugosity (characterization of roughness derived from bathymetry) draped over shaded-relief bathymetry (see sheet 2) for same area as figure 4 (Box B on map). Rugosity values are displayed in muted “rainbow” color spectrum that ranges from purple (low rugosity) through green (medium rugosity) to red (high rugosity). Interpreted substrate classes from figure 4 included for comparison.

[illegible]