

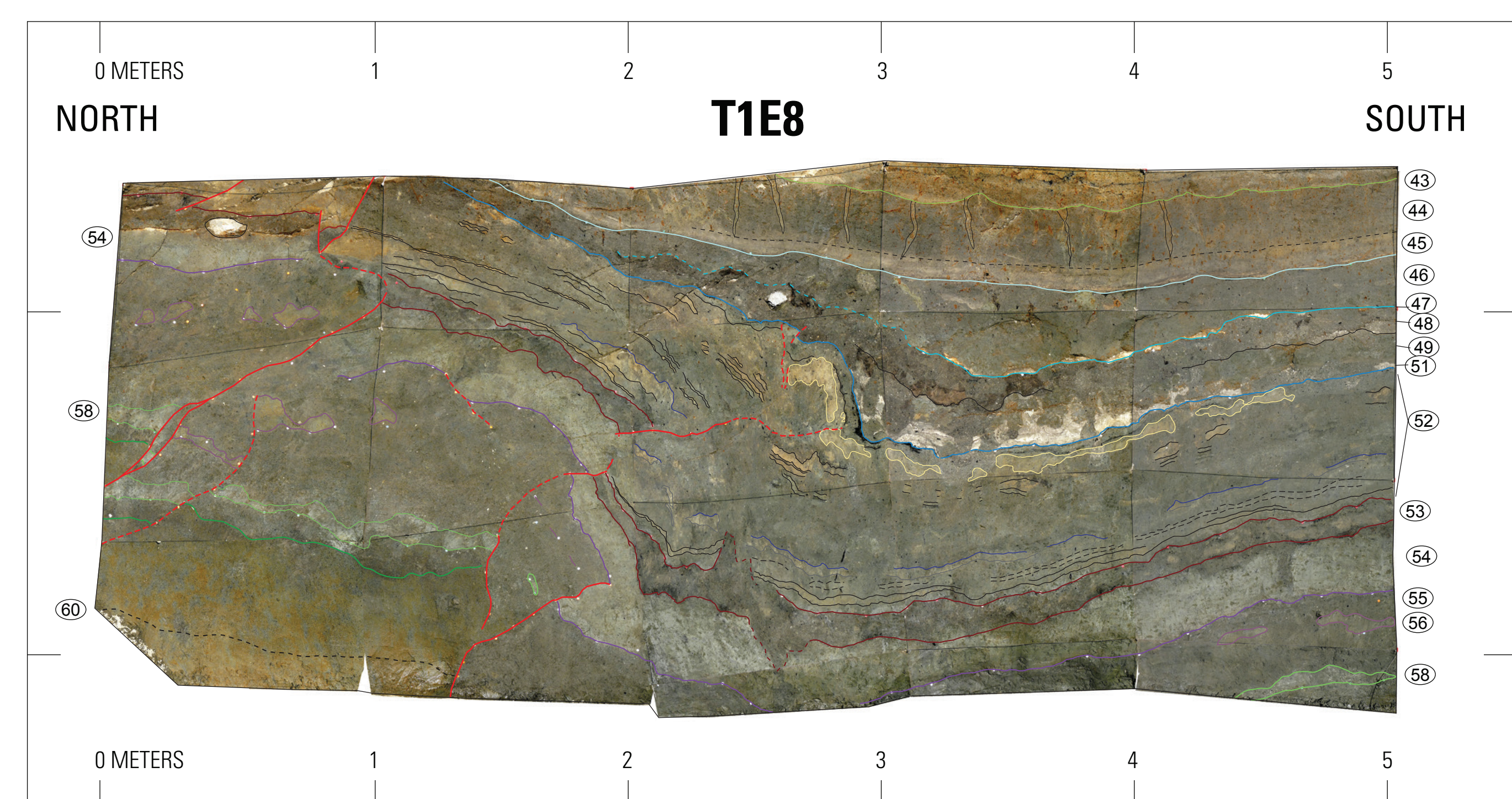
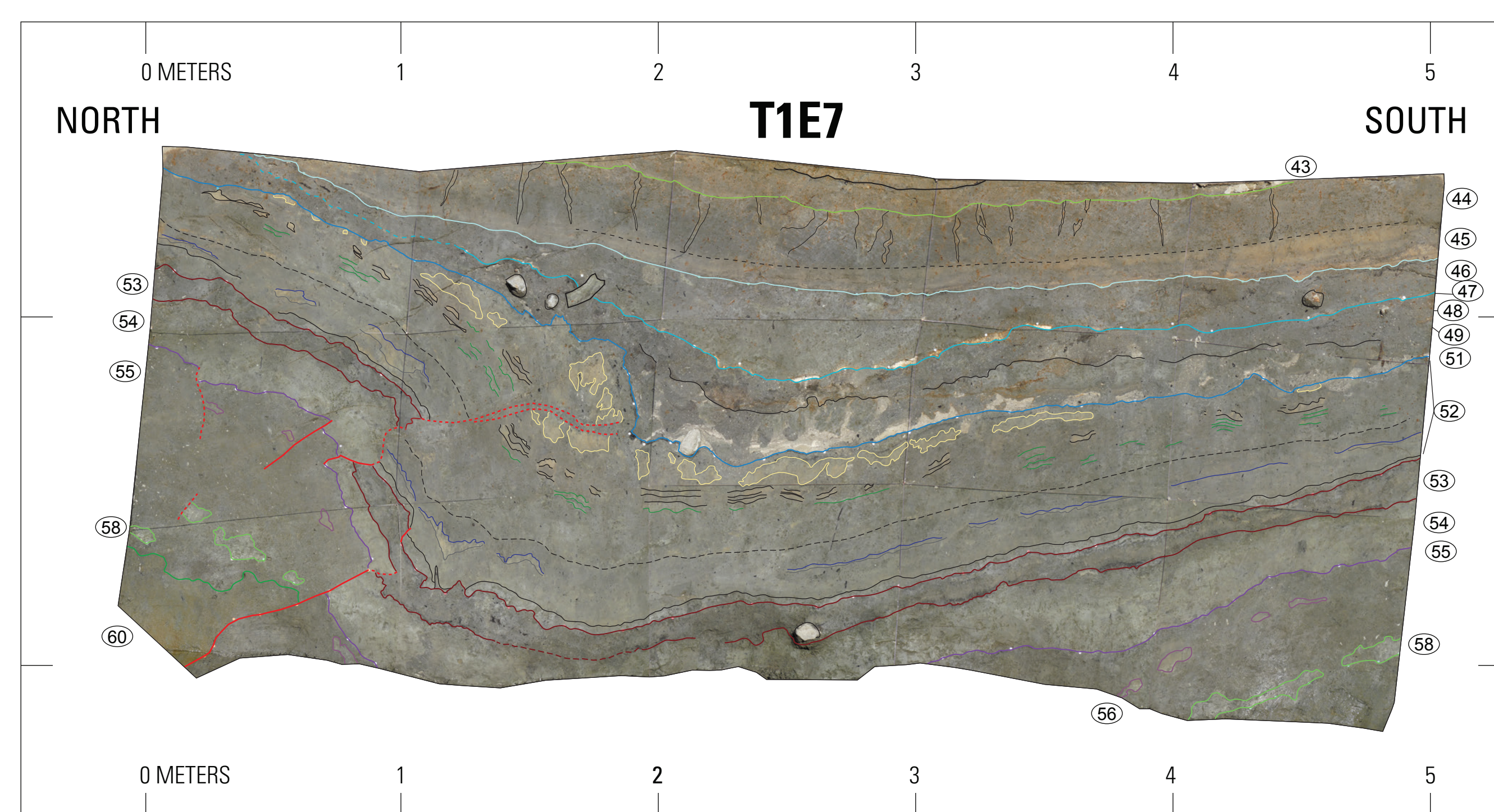
**EXPLANATION**

Photomosaics and line work for the cuts 13, 11, 8, and 7 of trench 1. All photomosaics shown with view orthogonal to sloping, nonvertical wall; sloping walls produce approximately 20 percent vertical exaggeration. Grid provides scale for each wall in meters; horizontal scale is consistent for all exposures; vertical scale is variable.

⑤① Stratigraphic unit number

— Contact—Key horizons are shown with consistent colors; other units shown in thin black or gray; dashed where contact is diffuse or gradational

— Fault—Solid where location is certain, dashed where location is approximate



**Photomosaics and Event Evidence from the Frazier Mountain Paleoseismic Site, Trench 1, Cuts 5–24, San Andreas Fault Zone, Southern California (2010–2012)**

By  
 Katherine M. Scharer,<sup>1</sup> Tom E. Fumal,<sup>1</sup> Ray J. Weldon, II,<sup>2</sup> and Ashley R. Streig<sup>2</sup>  
 2015