

Development:

Terrestrial
Aquatic

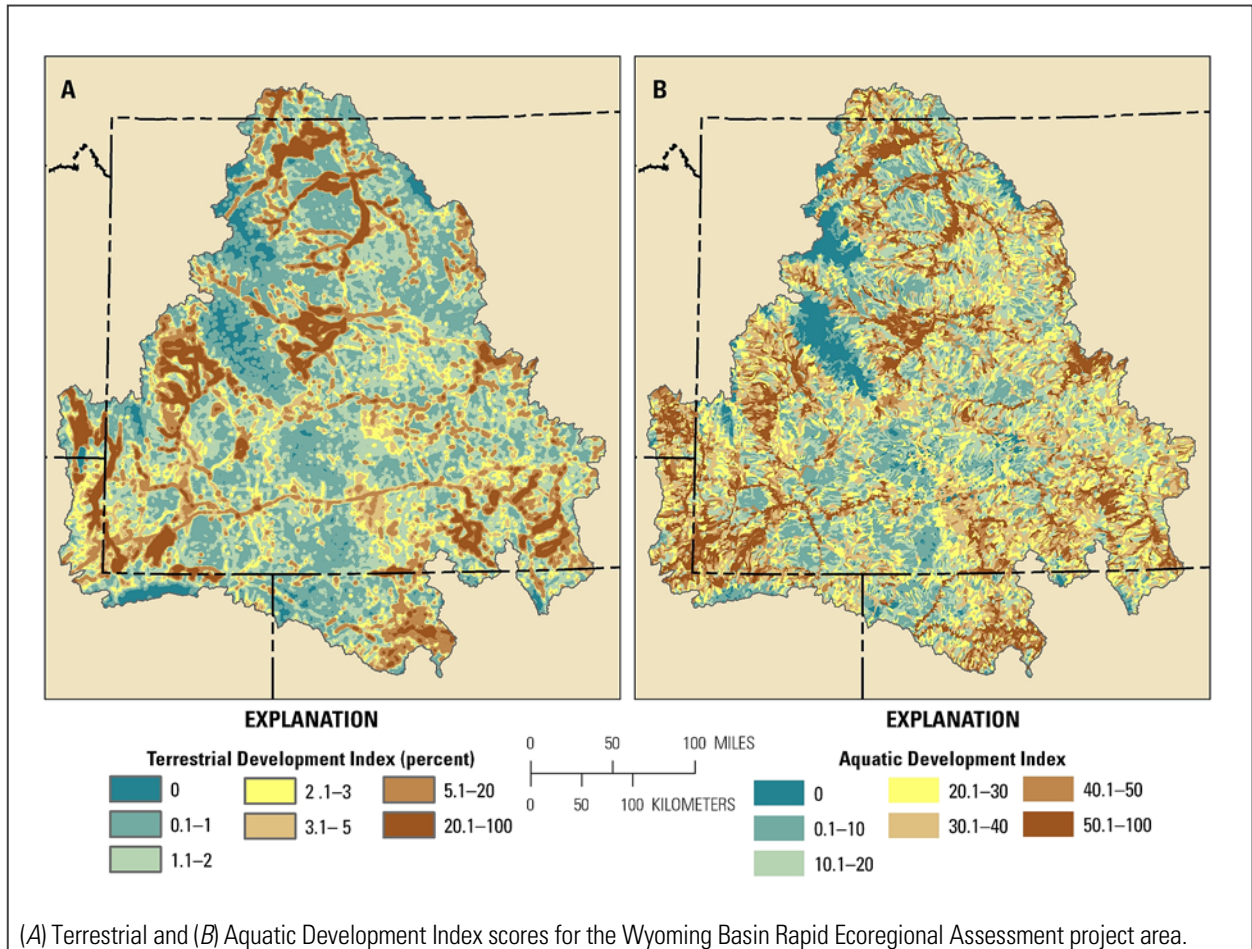
Management Questions

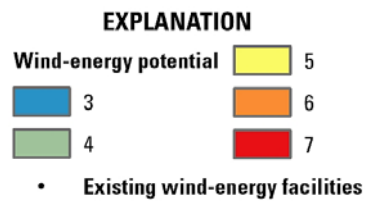
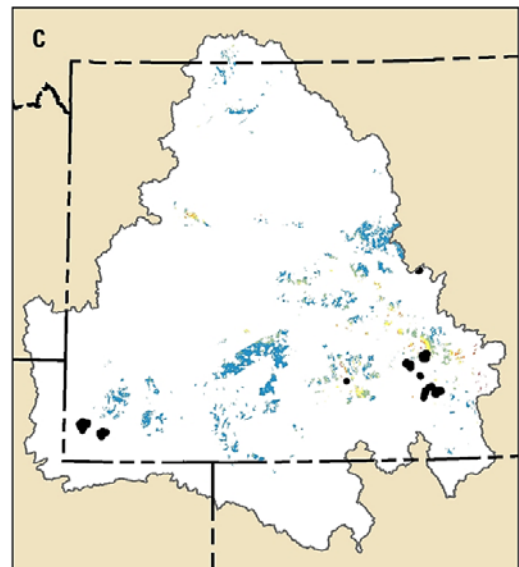
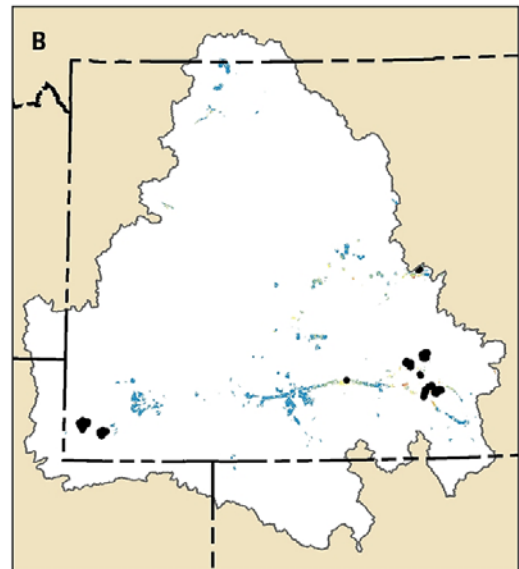
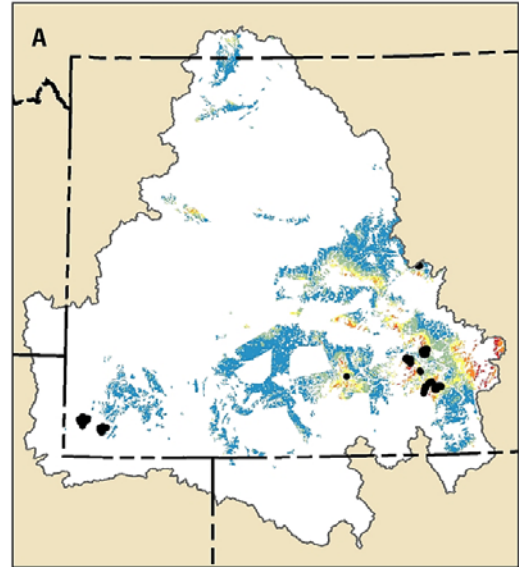
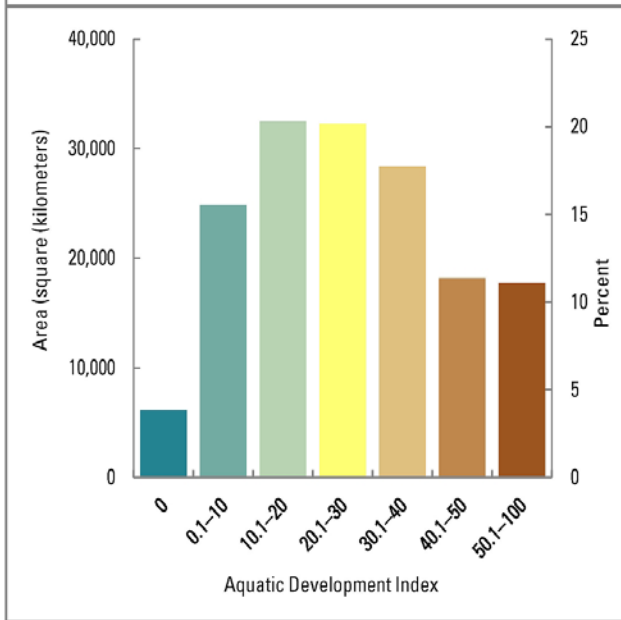
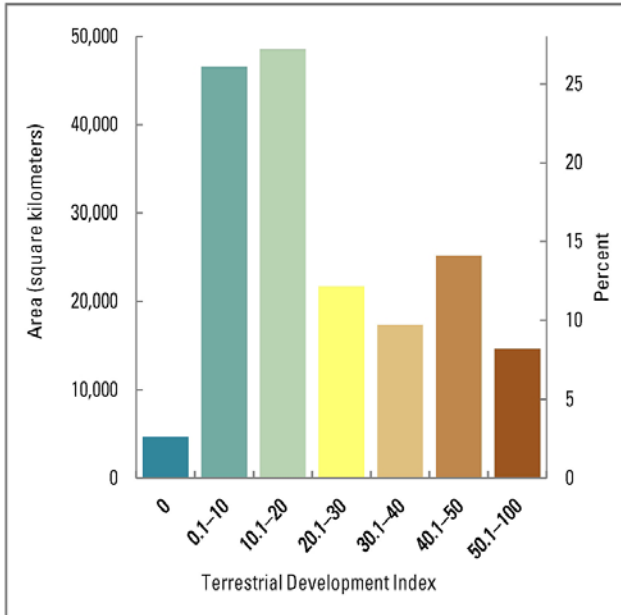
- Where does development pose the greatest threat to terrestrial systems in the ecoregion, and where are the large, relatively undeveloped patches? (Left map below)
- How do terrestrial development levels vary by transportation, energy and minerals, agriculture, and urban development classes?
- Where does development pose the greatest threat to aquatic systems in the ecoregion, and where are the relatively undeveloped catchments and watersheds? (Right map below)
- How do aquatic development levels vary by transportation, energy and minerals, dams and diversions, and agriculture and urban development classes?



Photo credit: U.S. Geological Survey.

- Where are areas with high potential for future oil and gas development in relation to current and projected oil and gas development and in relation to existing oil and gas leases?
- Where are the relatively undeveloped areas that have high potential for future oil and gas development?
- Where are areas with high potential for wind development and how does potential for wind development vary with areas of high development scores versus relatively undeveloped scores? (Right map panel following page)





Potential for wind-energy development (A) across entire project area; (B) in areas of high terrestrial development (Terrestrial Development Index scores >5 percent); and (C) in relatively undeveloped areas (TDI scores ≤1 percent).