

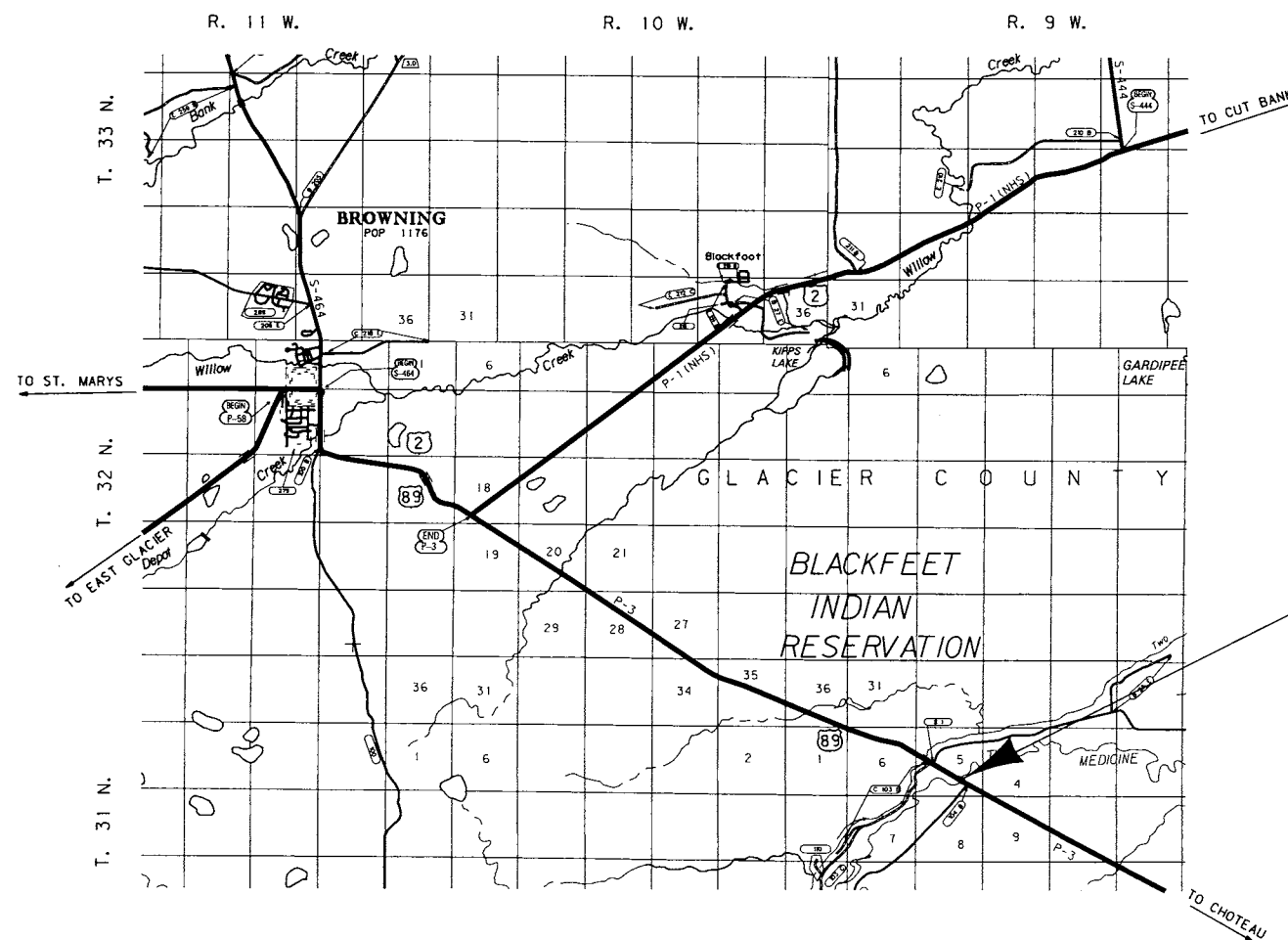
MONTANA DEPARTMENT OF TRANSPORTATION

FEDERAL AID PROJECT NO. BH 3-4(22)102

SCOUR PROTECTION TWO MEDICINE RVR BR - SCOUR PROT GLACIER COUNTY

LENGTH NA KILOMETERS

REDUCED PRINTS ONE-HALF ORIGINAL SCALE
ALL SCALES ARE APPROXIMATE



RELATED PROJECTS	

ASSOCIATED PROJECT AGREEMENT NUMBERS	
R/W & I.C.	
P.E.	BH 3-4(22)102

CONTROL NO. 4046001

DESIGN DATA

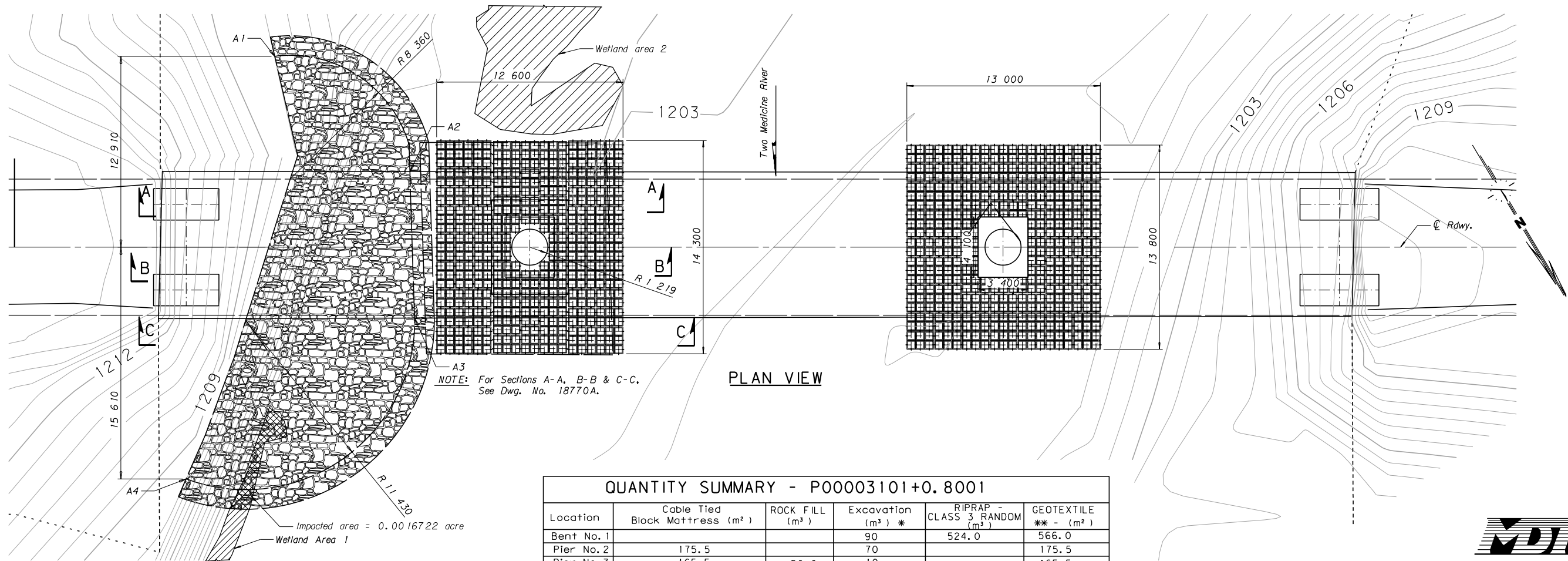
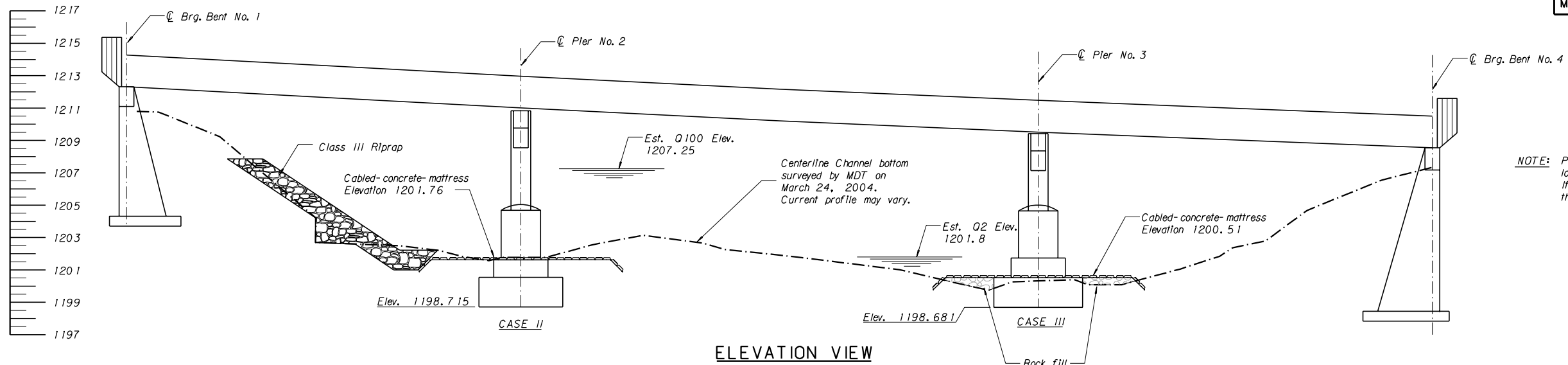
A.D.T. =
A.D.T. =
A.D.T. =
D.H.V. =
T. =
V. =
80 kn ESAL'S =
GROWTH RATE =

LETTING DATE -

MONTANA DEPARTMENT OF TRANSPORTATION	
APPROVED : <i>November 19 2007</i>	
JIM LYNCH DIRECTOR OF TRANSPORTATION BY <i>[Signature]</i>	
U.S. DEPARTMENT OF TRANSPORTATION FEDERAL HIGHWAY ADMINISTRATION	
APPROVED : _____ DIVISION ADMINISTRATOR	_____ DATE



STATE	PROJECT NUMBER	SHEET NO.
MONTANA	BH 3-4(22)102	B2 of 4



QUANTITY SUMMARY - P0003101+0.8001					
Location	Cable Tied Block Mattress (m ²)	ROCK FILL (m ³)	Excavation (m ³) *	RIPRAP - CLASS 3 RANDOM (m ²)	GEOTEXTILE ** - (m ²)
Bent No. 1			90	524.0	566.0
Pier No. 2	175.5		70		175.5
Pier No. 3	165.5	50.0	10		165.5
TOTAL	341.0	50.0	170	524.0	907.0

COORDINATE TABLE **			
DESCRIPTION	NORTHING	EASTING	ELEVATION
A1	474 376.099	356 040.772	1207.85
A2	474 337.625	356 037.379	1202.22
A3	474 396.088	356 042.539	1202.22
A4	474 396.727	356 061.410	1207.85

** Survey data is based on Metric State Plane Coordinates (NAD83 - 1992)

* NOTE: Excavation quantities are shown for estimating purposes only. See Special Provisions.

NOTE: Rock Fill Quantities are estimated. The contractor's will be paid the unit bid price for the actual amount of rock placed.

NOTE: For measurement and payment of Cable Tied Block Mattress and Rock fill, see Special Provisions.

** Permanent Erosion Control - High survivability Class A.

DESIGNED	3/6/00	TJC
DRAWN	3/6/00	KSTG
CHECKED	9/18/02	TJC/MSD
REVISED	8/24/05	RJB
REVISED	6/15/06	RJB
REVISED	7/31/07	KFM

MONTANA DEPARTMENT OF TRANSPORTATION

BRIDGE OVER TWO MEDICINE RIVER

AT STA. 272+50.205

FEDERAL AID PROJECT NO. BH 3-4(22)102

GLACIER COUNTY

SCOUR CONTROL PLAN

No Scale

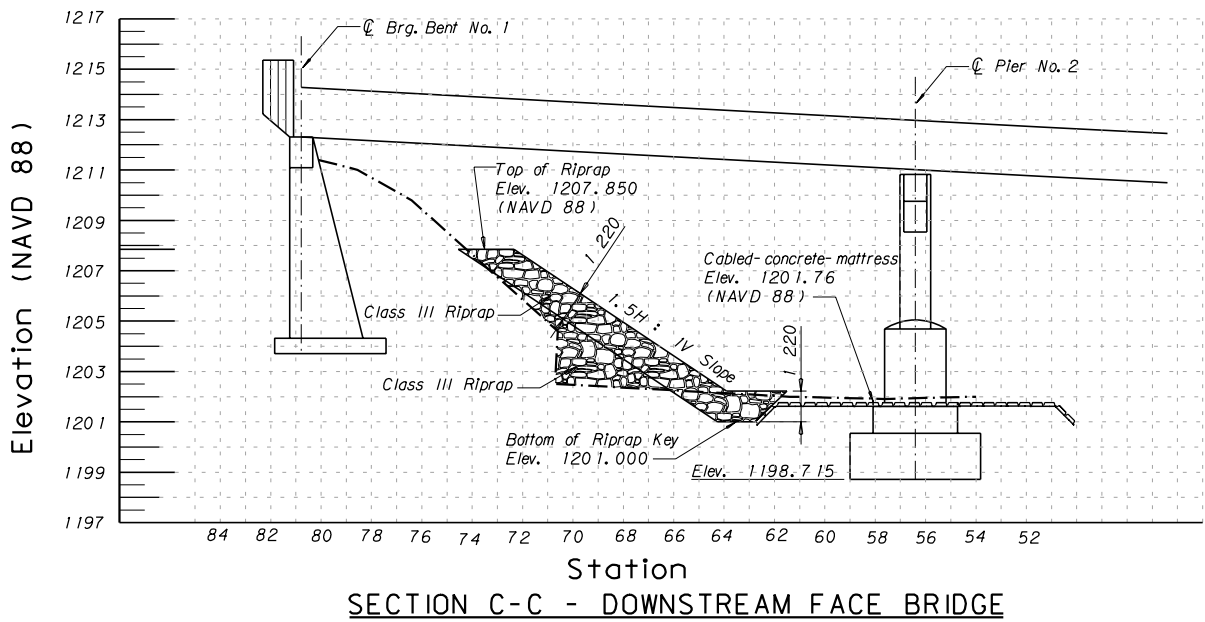
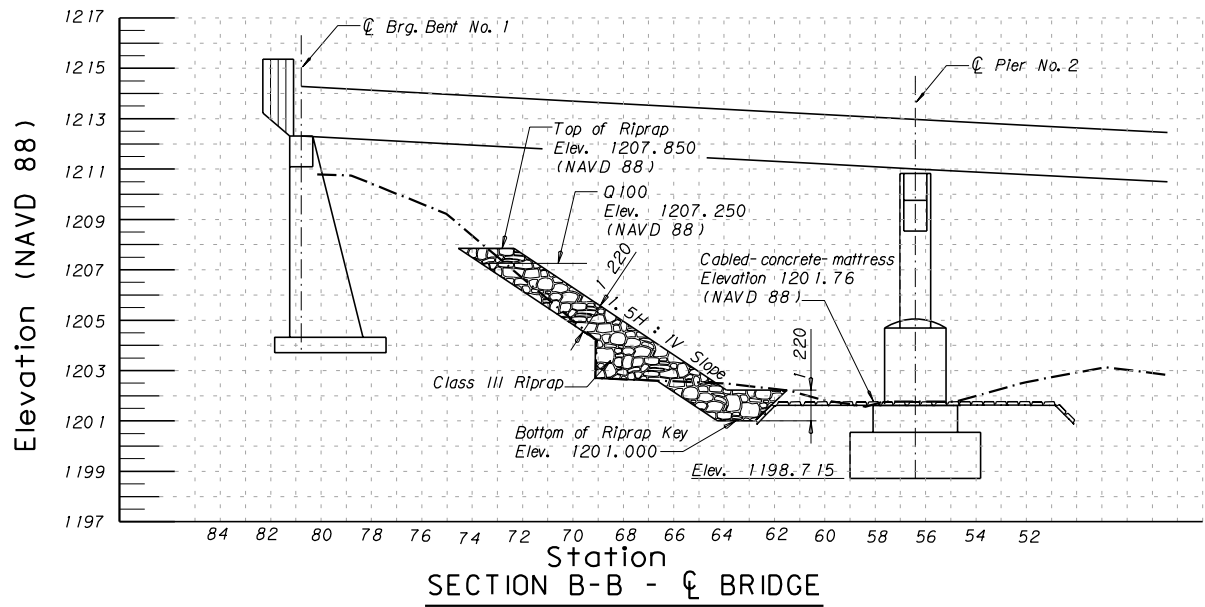
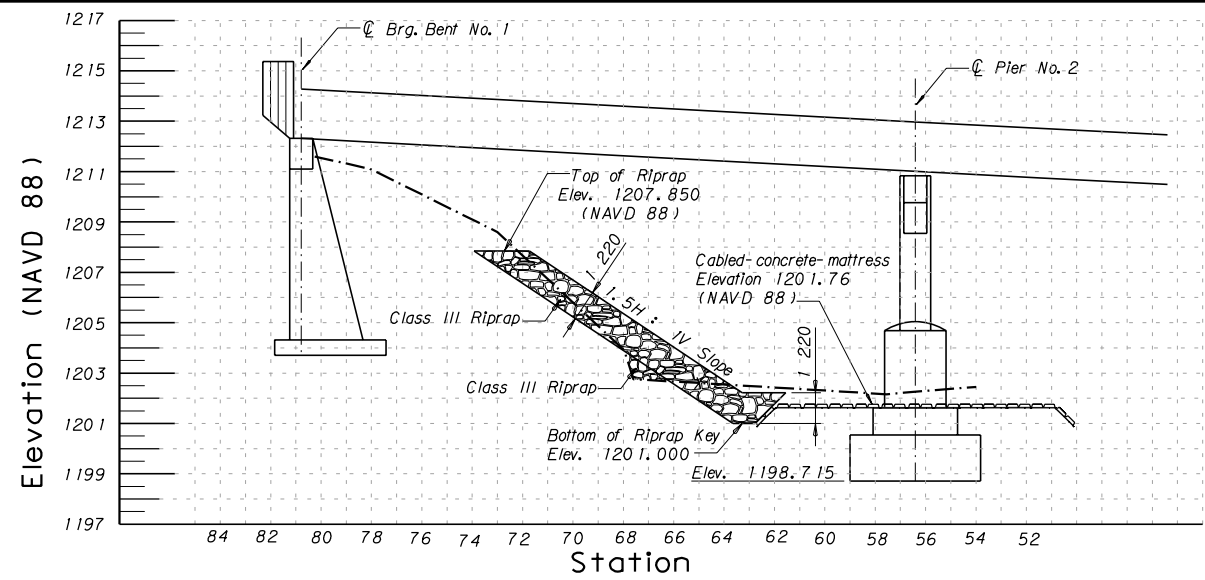
404600 1BSCR001.DGN

FILENAME: DRAWING NO. 18770

c:\dgn\404600 1bscr001.dgn
12/18/2007
2:32:22 PM CPS - U1346



STATE	PROJECT NUMBER	SHEET NO.
MONTANA	BH 3-4(22)102	B3 of 4



NOTE: For Plan View for Section locations,
See Dwg. No. 18770.



BRIDGE OVER TWO MEDICINE RIVER
AT STA. 272+50.205
FEDERAL AID PROJECT NO. BH 3-4(22)102
GLACIER COUNTY

SCOUR CONTROL SECTIONS

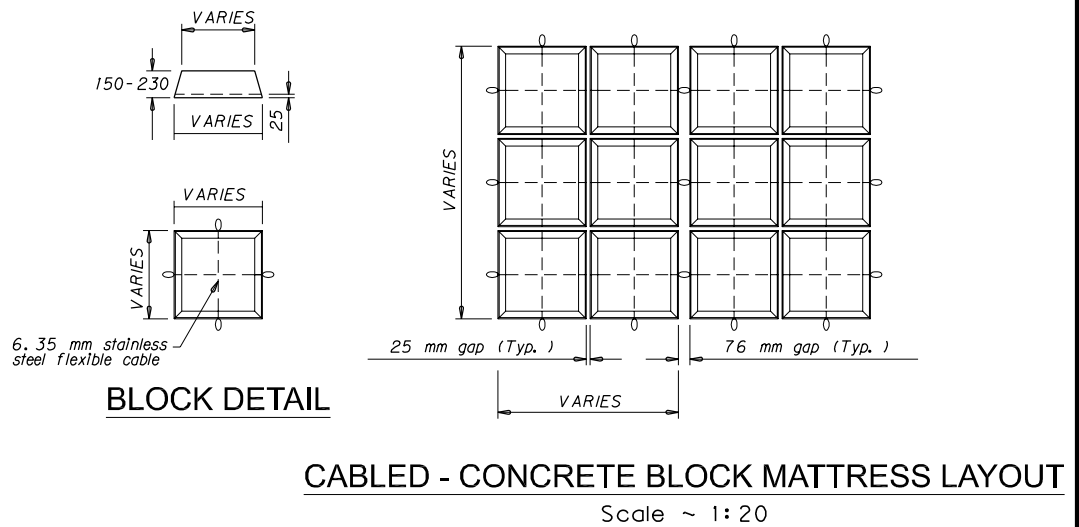
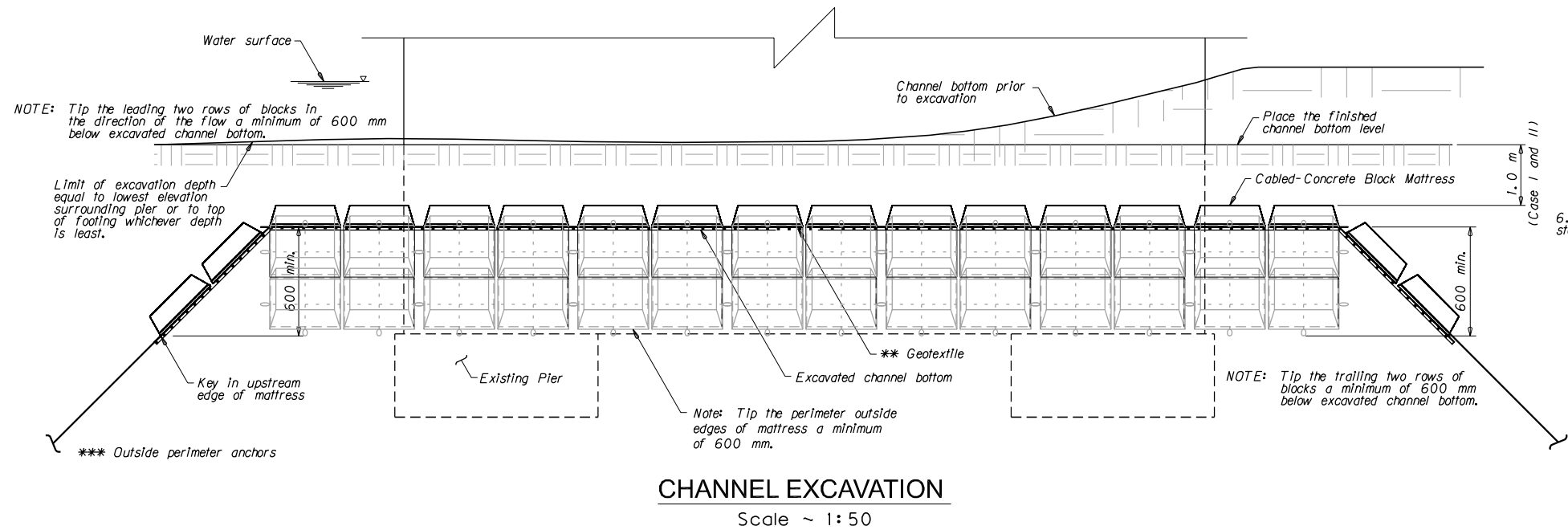
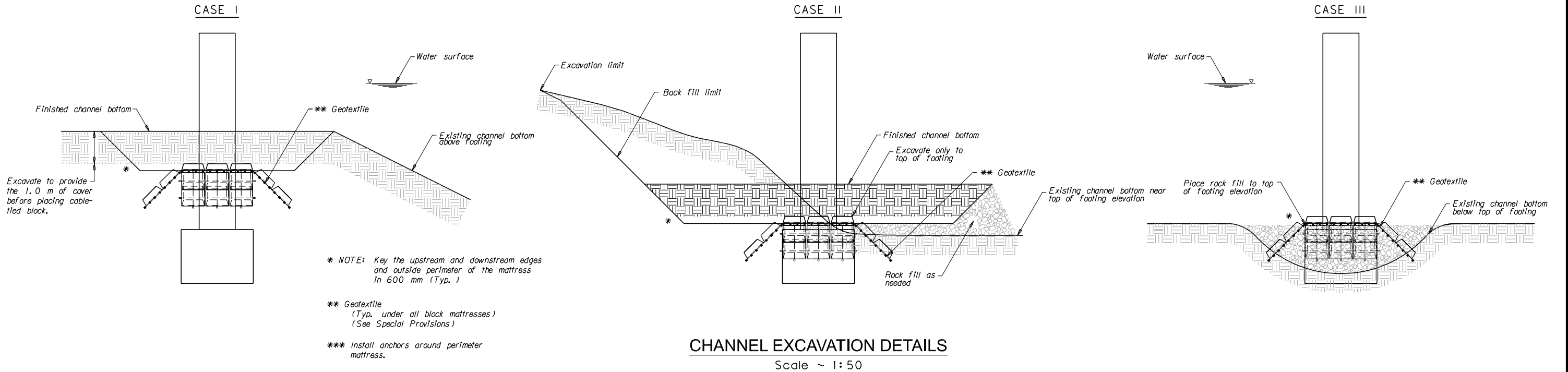
NO SCALE
4046001BRMDE001.DGN
DRAWING NO. 18770A

DESIGNED	6-15-06	RJB
DRAWN	7-7-06	P. H. Jr.
CHECKED		
REVISD		
REVISD		
REVISD		

c:\dgn\4046001brmde001.dgn
12/18/2007
2:32:28 PM CPS - U1346



STATE	PROJECT NUMBER	SHEET NO.
MONTANA	BH 3-4(22)102	B4 of 4



BRIDGE OVER TWO MEDICINE RIVER

AT STA. 272+50.205

FEDERAL AID PROJECT NO. BH 3-4(22)102

GLACIER COUNTY
SCOUR CONTROL DETAILS

DESIGNED	6/16/05	RJB
DRAWN	8/24/05	JEA
CHECKED		
REVISED		
REVISED	8/24/05	RJB

Scale ~ None
404600 1BRSCR002.DGN
FILENAME: DRAWING NO. 18770B