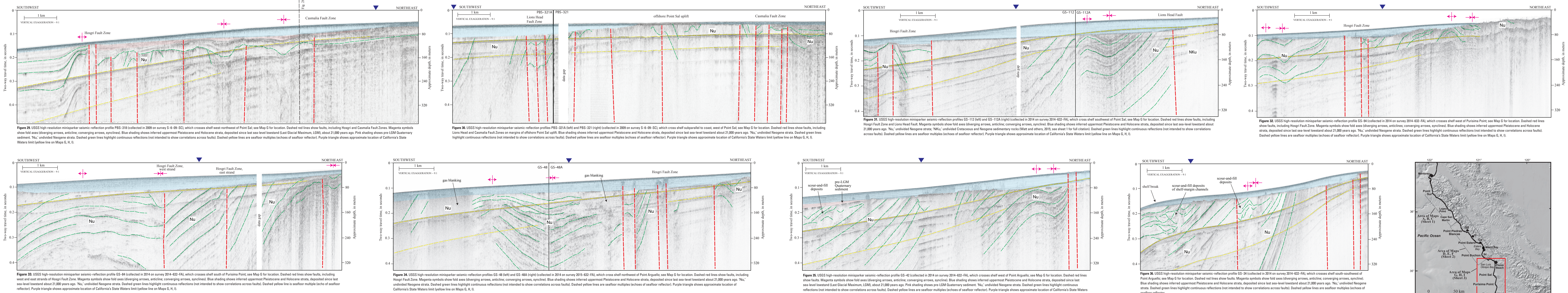


Seismic shaded relief from U.S. Geological Survey's The National Map, available at <https://download.cr.usgs.gov/seismic/shaded-relief/>. Offshore shaded relief bathymetry from U.S. Coastal Relief Model National Center for Environmental Information, 2012, was used for full stations U.S. Coastal Relief Model - Southern California (Shaded Bathymetry Metadata, Zone 109).

NOT INTENDED FOR NAVIGATIONAL USE

Structure, depth, and thickness mapped by Stephen Y. Johnson, Stephen R. Hartwell, and Janet T. Watt, 2017. USGS data and figure copyright by Stephen Y. Johnson. Manuscript approved for publication September 26, 2018.



## Offshore Shallow Structure and Sediment Distribution, Point Sur to Point Arguello, Central California

By  
Samuel Y. Johnson,<sup>1</sup> Stephen R. Hartwell,<sup>1</sup> Janet T. Watt,<sup>1</sup> Jeffrey W. Beeson,<sup>2</sup> and Peter Dartnall<sup>1</sup>  
2019

<sup>1</sup>U.S. Geological Survey,  
Menlo Park, California, 94025

Open-File Report 2018-1159  
Sheet 3 of 3