

Appendix 7. Tabulated Observations and Photographs of Surface Faulting and Ground Deformation Produced by the M_w 6.0 South Napa Earthquake of August 24, 2014—Trace F

Introduction

The following pages contain maps and tables of descriptions, slip measurements, and photographs of surface faulting and ground deformation features obtained in the field at observation stations located along Trace F. Station locations are shown as circles in figure 7.1 and labeled by the Station ID number. To aid in locating a specific observation station, IDs increase numerically from south to north. Where multiple observations occur at the exact same locality, IDs are shown as a range (for example, 200–202 identifies stations 200, 201, and 202 all at the same location). Where stations are too closely spaced to be individually labeled in the figures, a single label is used for a group of stations, with the IDs or groups of IDs listed in a vertical column and the label leader pointing to the approximate midpoint of the group of closely spaced stations. Mappable fault rupture and surface deformation features are symbolized on the included maps as described in appendix 1.

Observations and (or) photographs collected at each station are tabulated by Station ID. Where stations occur at the same locality, earlier observations are listed first. Photographs taken at an observation station, if any, follow the station attribute information; high resolution images can be downloaded by clicking on the associated links. Station and photograph attributes are described in detail in appendix 1.

Trace F

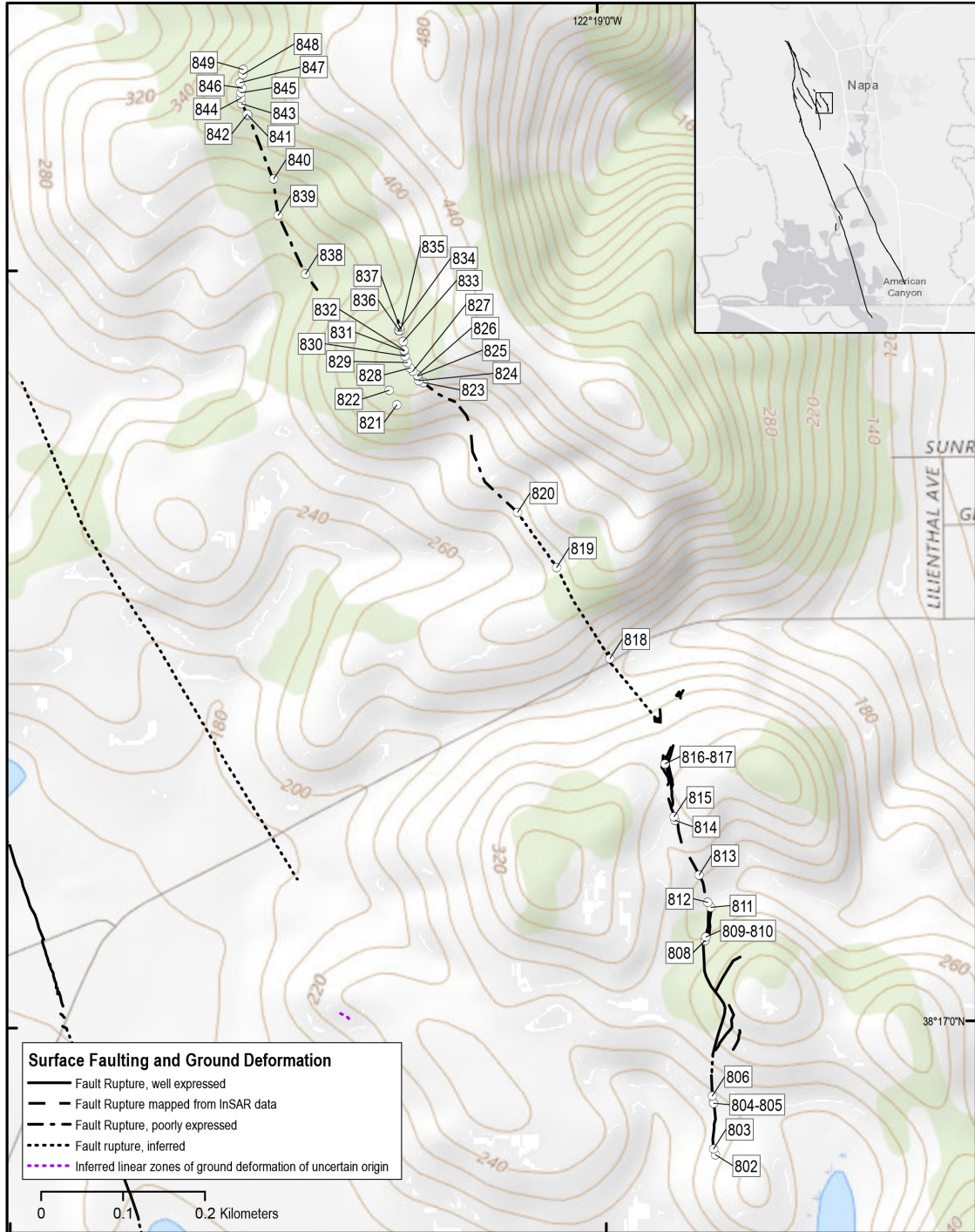


Figure 7.1. Rupture map showing locations of observation stations 802–849 along Trace F of the West Napa Fault System, California, from 800 m southeast of intersection of Old Sonoma Road and Congress Valley Road 1.4 km northwest to northern terminus of Trace F. Inset shows location of fig. 7.1 relative to full extent of rupture. Shaded relief base from U.S. Geological Survey National Map <https://viewer.nationalmap.gov/advanced-viewer/>.

Station ID: 802				Observer: Hecker
Observation Date	Latitude	Longitude	Offset Feature	Inferred Origin
2014:09:19	38.28188	122.31513	Soil	Uncertain
Description				
Extensional crack between vines just south of where fractures cross east-west road along property boundary. Can't trace fractures any farther south through vineyard.				

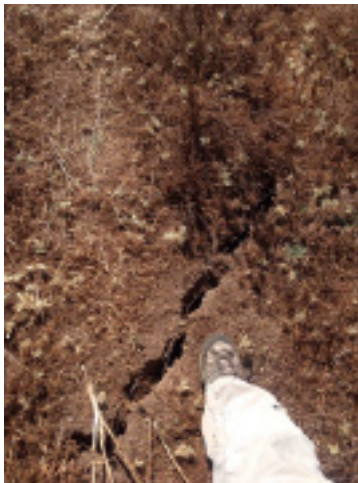
Station ID: 803				Observer: Dawson
Observation Date	Latitude	Longitude	Offset Feature	Inferred Origin
2014:09:16	38.28195	122.31516	Soil	Tectonic
Description				
At property boundary.				
Photographer	Camera Coordinates		Photograph Date	
Dawson	38.28194	122.31502	2014:09:16	

[High Resolution Photograph](#)



Station ID: 804		Observer: Dawson		
Observation Date	Latitude	Longitude	Offset Feature	Inferred Origin
2014:09:16	38.28245	122.31515	Soil	Tectonic
Photographer	Camera Coordinates		Photograph Date	
Dawson	38.28251	122.31500	2014:09:16	

[High Resolution Photograph](#)



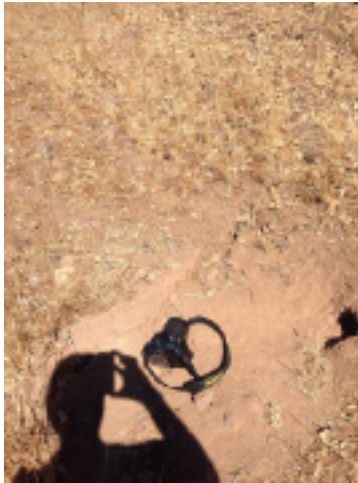
Station ID: 805				Observer: Ponti		
Observation Date	Latitude	Longitude	Offset Feature	Inferred Origin		
2014:10:15	38.28245	122.31515	Soil	Tectonic		
Description						
Vector length 6 cm, vector azimuth 130, fracture azimuth overall is 358. Plunge is 5. Normal oblique, up on the west side.						
Fault Azimuth	Strike Slip	Strike-slip Sense	Extension	Compression	Vertical	Upthrown Side
358	4	RL	4.5		0.5	W
Photographer	Camera Coordinates			Photograph Date		
Ponti	38.28245	122.31512	2014:10:15	14:31:04		

[High Resolution Photograph](#)



Station ID: 806				Observer: Dawson
Observation Date	Latitude	Longitude	Offset Feature	Inferred Origin
2014:09:16	38.28253	122.31517	Soil	Tectonic
Photographer	Camera Coordinates		Photograph Date	
Dawson	38.28252	122.31516	2014:09:16	

[High Resolution Photograph](#)



Station ID: 807				Observer: Seitz
Observation Date	Latitude	Longitude	Offset Feature	Inferred Origin
2014:10:03	38.28424	122.31526	Soil	Tectonic
Photographer	Camera Coordinates		Photograph Date	
Seitz	38.28430	122.31521	2014:10:03 12:06:52	

[High Resolution Photograph](#)



Station ID: 807

Observer: Seitz

Photographer	Camera Coordinates		Photograph Date
Seitz	38.28428	122.31523	2014:10:03 12:07:07

[High Resolution Photograph](#)



Photographer	Camera Coordinates		Photograph Date
Seitz	38.28420	122.31522	2014:10:03 12:07:20

[High Resolution Photograph](#)



Station ID: 808				Observer: Ponti
Observation Date	Latitude	Longitude	Offset Feature	Inferred Origin
2014:10:15	38.28424	122.31526	Soil	Tectonic
Photographer	Camera Coordinates		Photograph Date	
Ponti	38.28421	122.31522	2014:10:15 12:45:39	

[High Resolution Photograph](#)



Station ID: 809				Observer: Dawson
Observation Date	Latitude	Longitude	Offset Feature	Inferred Origin
2014:09:16	38.28428	122.31524	Soil	Tectonic
Photographer	Camera Coordinates		Photograph Date	
Dawson	38.28429	122.31528	2014:09:16	

[High Resolution Photograph](#)



Station ID: 810				Observer: Ponti		
Observation Date	Latitude	Longitude	Offset Feature	Inferred Origin		
2014:10:15	38.28428	122.31524	Soil	Tectonic		
Description						
Prominent uphill facing scarp here. No apparent lateral offset, about 6 cm of vertical offset and 3 to 4 cm extension.						
Fault Azimuth	Strike Slip	Strike-slip Sense	Extension	Compression	Vertical	Upthrown Side
			3-4*		6*	W
Photographer	Camera Coordinates		Photograph Date			
Ponti	38.28429	122.31527	2014:10:15	15:18:49		

[High Resolution Photograph](#)



Station ID: 811				Observer: Dawson
Observation Date	Latitude	Longitude	Offset Feature	Inferred Origin
2014:09:16	38.28461	122.31517	Soil	Tectonic
Photographer	Camera Coordinates		Photograph Date	
Dawson	38.28461	122.31514	2014:09:16	

[High Resolution Photograph](#)



Station ID: 812				Observer: Ponti
Observation Date	Latitude	Longitude	Offset Feature	Inferred Origin
2014:10:15	38.28466	122.31521	Soil	Tectonic
Photographer	Camera Coordinates		Photograph Date	
Ponti	38.28466	122.31517	2014:10:15 12:42:25	

[High Resolution Photograph](#)



Station ID: 813				Observer: Dawson
Observation Date	Latitude	Longitude	Offset Feature	Inferred Origin
2014:09:16	38.28496	122.31533	Soil	Tectonic
Photographer	Camera Coordinates		Photograph Date	
Dawson	38.28500	122.31522	2014:09:16	

[High Resolution Photograph](#)



Photographer	Camera Coordinates		Photograph Date
Dawson	38.28508	122.31528	2014:09:16

[High Resolution Photograph](#)



Station ID: 814				Observer: Ponti
Observation Date	Latitude	Longitude	Offset Feature	Inferred Origin
2014:10:15	38.28557	122.31566	Soil	Tectonic
Photographer	Camera Coordinates		Photograph Date	
Ponti	38.28556	122.31565	2014:10:15 12:11:55	

[High Resolution Photograph](#)



Station ID: 815				Observer: Dawson
Observation Date	Latitude	Longitude	Offset Feature	Inferred Origin
2014:09:16	38.28561	122.31567	Soil	Tectonic
Photographer	Camera Coordinates		Photograph Date	
Dawson	38.28561	122.31558	2014:09:16	

[High Resolution Photograph](#)



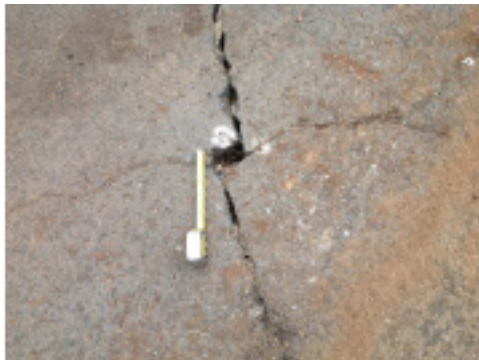
Station ID: 816				Observer: Ponti		
Observation Date	Latitude	Longitude	Offset Feature	Inferred Origin		
2014:10:15	38.28619	122.31580	Soil	Tectonic		
Description						
Fractures cut across road here. Offsets on fractures indicate approximately 5 cm of right-lateral motion parallel to fault.						
Fault Azimuth	Strike Slip	Strike-slip Sense	Extension	Compression	Vertical	Upthrown Side
	5*	RL				
Photographer	Camera Coordinates		Photograph Date			
Ponti	38.28626	122.31579	2014:10:15	15:41:17		

[High Resolution Photograph](#)



Photographer	Camera Coordinates		Photograph Date		
Ponti	38.28626	122.31579	2014:10:15	15:41:17	

[High Resolution Photograph](#)



Station ID: 817				Observer: Dawson
------------------------	--	--	--	-------------------------

Observation Date	Latitude	Longitude	Offset Feature	Inferred Origin
2014:09:16	38.28619	122.31580	Soil	Tectonic

Description
About 5 cm right-lateral.

Fault Azimuth	Strike Slip	Strike-slip Sense	Extension	Compression	Vertical	Upthrown Side
	5*	RL				

Photographer	Camera Coordinates	Photograph Date
Dawson	38.28612 122.31590	2014:09:16

[High Resolution Photograph](#)



Photographer	Camera Coordinates	Photograph Date
Dawson	38.28612 122.31590	2014:09:16

[High Resolution Photograph](#)



Station ID: 817		Observer: Dawson	
Photographer	Camera Coordinates		Photograph Date
Dawson	38.28612	122.31590	2014:09:16

[High Resolution Photograph](#)



Station ID: 818				Observer: Zaccone
Observation Date	Latitude	Longitude	Offset Feature	Inferred Origin
2014:08:30	38.28736	122.31656	Pavement	Tectonic

Description

Old Sonoma Road west of city limits.

Photographer	Camera Coordinates	Photograph Date
Zaccone		2014:08:30 16:31:03

[High Resolution Photograph](#)



Station ID: 818

Observer: Zaccone

Photographer

Camera Coordinates

Photograph Date

Zaccone

2014:08:30 16:31:34

[High Resolution Photograph](#)



Photographer

Camera Coordinates

Photograph Date

Zaccone

2014:08:30 16:32:03

[High Resolution Photograph](#)



Station ID: 818

Observer: Zaccone

Photographer

Camera Coordinates

Photograph Date

Zaccone

2014:08:30 16:32:15

[High Resolution Photograph](#)



Photographer

Camera Coordinates

Photograph Date

Zaccone

2014:08:30 16:32:22

[High Resolution Photograph](#)



Station ID: 818

Observer: Zaccone

Photographer

Camera Coordinates

Photograph Date

Zaccone

2014:08:30 16:33:21

[High Resolution Photograph](#)



Photographer

Camera Coordinates

Photograph Date

Zaccone

2014:08:30 16:33:34

[High Resolution Photograph](#)



Photographer

Camera Coordinates

Photograph Date

Zaccone

2014:08:30 16:33:44

[High Resolution Photograph](#)



Station ID: 819					Observer: Hecker	
Observation Date	Latitude	Longitude	Offset Feature	Inferred Origin		
2014:09:19	38.28836	122.31729	Soil	Tectonic		
Description						
Fractures on-trend with those to north. Crosses dirt road at northeast corner of vineyard with 1-2 cm extension.						
Fault Azimuth	Strike Slip	Strike-slip Sense	Extension	Compression	Vertical	Upthrown Side
1-2*						

Station ID: 820					Observer: Hecker
Observation Date	Latitude	Longitude	Offset Feature	Inferred Origin	
2014:09:19	38.28897	122.31783	Soil	Tectonic	
Description					
Bedrock outcropping along road with fresh fractures and nearby small extensional crack in non-expansive soil between vines.					
Photographer	Camera Coordinates		Photograph Date		
Hecker			2014:09:19 18:43:57		

High Resolution Photograph



Station ID: 821					Observer: Hecker	
Observation Date	Latitude	Longitude	Offset Feature	Inferred Origin		
2014:09:19	38.29017	122.31951	Soil	Uncertain		
Description						
Continuation of zone at waypoint, where it crosses lower road. Single extensional crack (0.5-1 cm opening) bifurcates to north.						
Fault Azimuth	Strike Slip	Strike-slip Sense	Extension	Compression	Vertical	Upthrown Side
0.5-1*						

Station ID: 822				Observer: Hecker		
Observation Date	Latitude	Longitude	Offset Feature	Inferred Origin		
2014:09:19	38.29032	122.31962	Soil	Uncertain		
Description						
Separate fracture alignment subparallel and west of main zone. Extensional crack across path with slight down to west (downhill) vertical displacement and slight inflection in slope.						
Fault Azimuth	Strike Slip	Strike-slip Sense	Extension	Compression	Vertical	Upthrown Side
						E
Photographer		Camera Coordinates		Photograph Date		
Hecker				2014:09:19 17:59:34		

[High Resolution Photograph](#)



Station ID: 823				Observer: Hecker		
Observation Date	Latitude	Longitude	Offset Feature	Inferred Origin		
2014:09:19	38.29041	122.31914	Soil	Tectonic		
Description						
Pair of extensional cracks ~1 m apart (~0.5-1 cm openings; ~1 cm right-lateral) crossing dirt road; lost to south in thick grass.						
Fault Azimuth	Strike Slip	Strike-slip Sense	Extension	Compression	Vertical	Upthrown Side
	1*	RL	0.5-1*			

Station ID: 824					Observer: Hecker	
Observation Date	Latitude	Longitude	Offset Feature	Inferred Origin		
2014:09:19	38.29043	122.31920	Soil	Tectonic		
Description						
Extensional crack, slight right-lateral offset, openings up to 2 cm. Roughly trending northwest.						
Fault Azimuth	Strike Slip	Strike-slip Sense	Extension	Compression	Vertical	Upthrown Side
		RL	2*			

Station ID: 825					Observer: Hecker
Observation Date	Latitude	Longitude	Offset Feature	Inferred Origin	
2014:09:19	38.29048	122.31921	Soil	Tectonic	
Description					
Sinuous extensional crack.					

Station ID: 826					Observer: Hecker	
Observation Date	Latitude	Longitude	Offset Feature	Inferred Origin		
2014:09:19	38.29049	122.31922	Soil	Tectonic		
Description						
Extensional crack, up to 3 cm right-lateral offset, slight vertical offset, west side offset upward up to 2 cm.						
Fault Azimuth	Strike Slip	Strike-slip Sense	Extension	Compression	Vertical	Upthrown Side
	3*	RL			2*	W

Station ID: 827					Observer: Hecker	
Observation Date	Latitude	Longitude	Offset Feature	Inferred Origin		
2014:09:19	38.29054	122.31928	Soil	Tectonic		
Description						
Extensional crack, openings up to 5 cm, slight vertical offset, west side offset upward up to 3 cm.						
Fault Azimuth	Strike Slip	Strike-slip Sense	Extension	Compression	Vertical	Upthrown Side
			5*		3*	W

Station ID: 828					Observer: Hecker	
Observation Date	Latitude	Longitude	Offset Feature	Inferred Origin		
2014:09:19	38.29057	122.31932	Soil	Tectonic		
Description						
Extensional crack bifurcates, 2 cm openings on western most crack, 3 cm openings on northward trending crack.						
Fault Azimuth	Strike Slip	Strike-slip Sense	Extension	Compression	Vertical	Upthrown Side
			5*			

Station ID: 829					Observer: Hecker	
Observation Date	Latitude	Longitude	Offset Feature	Inferred Origin		
2014:09:19	38.29063	122.31936	Soil	Tectonic		
Description						
Extensional crack, openings up to 5 cm, no apparent vertical offset.						
Fault Azimuth	Strike Slip	Strike-slip Sense	Extension	Compression	Vertical	Upthrown Side
			5*			

Station ID: 830					Observer: Hecker	
Observation Date	Latitude	Longitude	Offset Feature	Inferred Origin		
2014:09:19	38.29070	122.31939	Soil	Tectonic		
Description						
Sinuous extensional crack, openings up to 6 cm, northward trending.						
Fault Azimuth	Strike Slip	Strike-slip Sense	Extension	Compression	Vertical	Upthrown Side
			5*			

Station ID: 831					Observer: Hecker	
Observation Date	Latitude	Longitude	Offset Feature	Inferred Origin		
2014:09:19	38.29076	122.31940	Soil	Tectonic		
Description						
Extensional crack, openings up to 10 cm, right lateral offset up to 3 cm, upward vertical offset on western side up to 3 cm.						
Fault Azimuth	Strike Slip	Strike-slip Sense	Extension	Compression	Vertical	Upthrown Side
	3*	RL	10*		3*	W

Station ID: 832					Observer: Hecker	
Observation Date	Latitude	Longitude	Offset Feature	Inferred Origin		
2014:09:19	38.29077	122.31940	Soil	Tectonic		
Description						
Sinuous extensional crack, openings up to 3 cm.						
Fault Azimuth	Strike Slip	Strike-slip Sense	Extension	Compression	Vertical	Upthrown Side
3*						

Station ID: 833					Observer: Hecker	
Observation Date	Latitude	Longitude	Offset Feature	Inferred Origin		
2014:09:19	38.29086	122.31941	Soil	Tectonic		
Description						
Extensional crack, openings up to 2 cm, northward trending, no apparent vertical offset.						
Fault Azimuth	Strike Slip	Strike-slip Sense	Extension	Compression	Vertical	Upthrown Side
2*						

Station ID: 834					Observer: Hecker
Observation Date	Latitude	Longitude	Offset Feature	Inferred Origin	
2014:09:19	38.29098	122.31948	Soil	Tectonic	
Description					
Crack.					

Station ID: 835					Observer: Hecker	
Observation Date	Latitude	Longitude	Offset Feature	Inferred Origin		
2014:09:19	38.29098	122.31945	Soil	Tectonic		
Description						
Extensional crack, openings up to 1 cm. Only 1.5 m of exposure underneath leaves and dirt.						
Fault Azimuth	Strike Slip	Strike-slip Sense	Extension	Compression	Vertical	Upthrown Side
1*						

Station ID: 836				Observer: Hecker
Observation Date	Latitude	Longitude	Offset Feature	Inferred Origin
2014:09:19	38.29098	122.31947	Soil	Tectonic
Description				
Crack.				

Station ID: 837				Observer: Hecker		
Observation Date	Latitude	Longitude	Offset Feature	Inferred Origin		
2014:09:19	38.29102	122.31946	Soil	Tectonic		
Description						
Extensional crack, openings up to 3 cm.						
Fault Azimuth	Strike Slip	Strike-slip Sense	Extension	Compression	Vertical	Upthrown Side
			3*			

Station ID: 838				Observer: Prentice/Hecker/Sickler		
Observation Date	Latitude	Longitude	Offset Feature	Inferred Origin		
2014:08:27	38.29161	122.32078	Soil	Tectonic		
Description						
Cracks near eastern edge of vineyard, near edge of forest. Water line break here; small right-lateral.						
Fault Azimuth	Strike Slip	Strike-slip Sense	Extension	Compression	Vertical	Upthrown Side
		RL				
Photographer	Camera Coordinates			Photograph Date		
Prentice				2014:08:27 16:25:47		

High Resolution Photograph



Station ID: 838

Observer: Prentice/Hecker/Sickler

Photographer

Camera Coordinates

Photograph Date

Prentice

2014:08:27 16:26:04

[High Resolution Photograph](#)



Photographer

Camera Coordinates

Photograph Date

Prentice

2014:08:27 16:26:15

[High Resolution Photograph](#)



Station ID: 838**Observer: Prentice/Hecker/Sickler**

Photographer**Camera Coordinates****Photograph Date**

Prentice

2014:08:27 16:26:27

[High Resolution Photograph](#)

Station ID: 839**Observer: Prentice/Hecker/Sickler**

Observation Date**Latitude****Longitude****Offset Feature****Inferred Origin**

2014:08:27

38.29226

122.32115

Soil

Tectonic

Description

Water line break along zone of cracks. Cracks across vineyard road, small right-lateral.

Fault Azimuth**Strike Slip****Strike-slip Sense****Extension****Compression****Vertical****Upthrown Side**

RL

Photographer**Camera Coordinates****Photograph Date**

Prentice

2014:08:27 16:28:30

[High Resolution Photograph](#)

Station ID: 839	Observer: Prentice/Hecker/Sickler	
Photographer	Camera Coordinates	Photograph Date
Prentice		2014:08:27 16:28:58

High Resolution Photograph

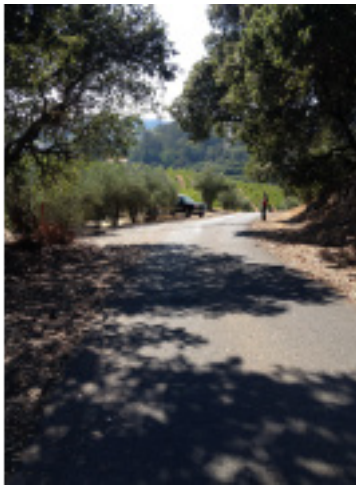


Station ID: 840	Observer: Prentice/Hecker/Sickler			
Observation Date	Latitude	Longitude	Offset Feature	Inferred Origin
2014:08:27	38.29266	122.32121	Soil	Tectonic
Description				
Very small cracks across vineyard road.				

Station ID: 841	Observer: Hecker					
Observation Date	Latitude	Longitude	Offset Feature	Inferred Origin		
2014:09:19	38.29336	122.32156	Pavement	Tectonic		
Description						
Northern continuation of eastern fracture zone in this area. Crack in ground (~2 cm extension) on south side of paved road; continues south into brush.						
Fault Azimuth	Strike Slip	Strike-slip Sense	Extension	Compression	Vertical	Upthrown Side
			2*			

Station ID: 842		Observer: Prentice/Hecker/Sickler				
Observation Date	Latitude	Longitude	Offset Feature	Inferred Origin		
2014:08:27	38.29338	122.32157	Soil	Tectonic		
Description						
Cracks across asphalt road, small right-lateral, 1-3 cm of west-side-up. Left-stepping en echelon cracks in vineyard north of road.						
Fault Azimuth	Strike Slip	Strike-slip Sense	Extension	Compression	Vertical	Upthrown Side
		RL			1-3*	W
Photographer	Camera Coordinates		Photograph Date			
Prentice			2014:08:27 16:42:28			

[High Resolution Photograph](#)



Photographer	Camera Coordinates	Photograph Date
Prentice		2014:08:27 16:43:53

[High Resolution Photograph](#)



Station ID: 842

Observer: Prentice/Hecker/Sickler

Photographer

Camera Coordinates

Photograph Date

Prentice

2014:08:27 16:46:48

[High Resolution Photograph](#)



Photographer

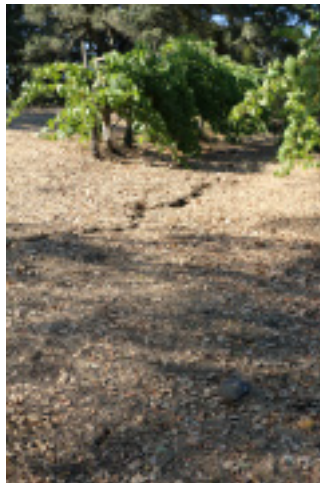
Camera Coordinates

Photograph Date

Prentice

2014:08:27 16:47:27

[High Resolution Photograph](#)



Photographer

Camera Coordinates

Photograph Date

Prentice

2014:08:27 16:48:26

[High Resolution Photograph](#)



Station ID: 842	Observer: Prentice/Hecker/Sickler	
Photographer	Camera Coordinates	Photograph Date
Prentice		2014:08:27 16:48:46

[High Resolution Photograph](#)



Station ID: 843				Observer: Hecker		
Observation Date	Latitude	Longitude	Offset Feature	Inferred Origin		
2014:09:19	38.29349	122.32165	Soil	Tectonic		
Description						
Sinuous extensional crack, openings up to 6 cm, continues through vineyard to the north. No apparent lateral offset.						
Fault Azimuth	Strike Slip	Strike-slip Sense	Extension	Compression	Vertical	Upthrown Side
			6*			

Station ID: 844				Observer: Hecker		
Observation Date	Latitude	Longitude	Offset Feature	Inferred Origin		
2014:09:19	38.29355	122.32166	Soil	Tectonic		
Description						
Crack sinuous, some localized vertical offset at this point, west side up ~5 cm. No apparent lateral offset.						
Fault Azimuth	Strike Slip	Strike-slip Sense	Extension	Compression	Vertical	Upthrown Side
					5*	W

Station ID: 845				Observer: Hecker
Observation Date	Latitude	Longitude	Offset Feature	Inferred Origin
2014:09:19	38.29361	122.32166	Pavement	Tectonic
Description				
End of sinuous parallel cracks in area.				

Station ID: 846				Observer: Hecker		
Observation Date	Latitude	Longitude	Offset Feature	Inferred Origin		
2014:09:19	38.29366	122.32164	Soil	Tectonic		
Description						
Sinuous crack, west side offset vertically upwards 5 cm. There are two more parallel extensional cracks to the northwest, possibly left stepover. No apparent lateral offset.						
Fault Azimuth	Strike Slip	Strike-slip Sense	Extension	Compression	Vertical	Upthrown Side
					5*	W

Station ID: 847				Observer: Hecker		
Observation Date	Latitude	Longitude	Offset Feature	Inferred Origin		
2014:09:19	38.29372	122.32167	Soil	Tectonic		
Description						
Several extensional cracks straddle row of vines. Somewhat left-stepping across 3-m-wide zone; small up on west component (~5-10 cm).						
Fault Azimuth	Strike Slip	Strike-slip Sense	Extension	Compression	Vertical	Upthrown Side
		RL			5-10*	W

Station ID: 847		Observer: Hecker
Photographer	Camera Coordinates	Photograph Date
Hecker		2014:09:19 16:59:39

[High Resolution Photograph](#)



Station ID: 848				Observer: Hecker
Observation Date	Latitude	Longitude	Offset Feature	Inferred Origin
2014:09:19	38.29381	122.32163	Soil	Tectonic
Description				
Westernmost crack of the two parallel cracks noted. Openings up to 5 cm, slight lateral offset				
Fault Azimuth	Strike Slip	Strike-slip Sense	Extension	Compression Vertical Upthrown Side
	<1*	RL	5*	

Station ID: 849				Observer: Hecker
Observation Date	Latitude	Longitude	Offset Feature	Inferred Origin
2014:09:19	38.29387	122.32162	Soil	Tectonic
Description				
North end of observations, fractures not traced farther north into wooded area.				