

Appendix 8. Tabulated Observations and Photographs of Surface Faulting and Ground Deformation Produced by the M_w 6.0 South Napa Earthquake of August 24, 2014—Trace G

Introduction

The following pages contain maps and tables of descriptions, slip measurements, and photographs of surface faulting and ground deformation features obtained in the field at observation stations located along Trace G. Station locations are shown as circles in figure 8.1 and labeled by the Station ID number. To aid in locating a specific observation station, IDs increase numerically from south to north. Where multiple observations occur at the exact same locality, IDs are shown as a range (for example, 200–202 identifies stations 200, 201, and 202 all at the same location). Where stations are too closely spaced to be individually labeled in the figures, a single label is used for a group of stations, with the IDs or groups of IDs listed in a vertical column and the label leader pointing to the approximate midpoint of the group of closely spaced stations. Mappable fault rupture and surface deformation features are symbolized on the included maps as described in appendix 1.

Observations and (or) photographs collected at each station are tabulated by Station ID. Where stations occur at the same locality, earlier observations are listed first. Photographs taken at an observation station, if any, follow the station attribute information; high resolution images can be downloaded by clicking on the associated links. Station and photograph attributes are described in detail in appendix 1.

Trace G

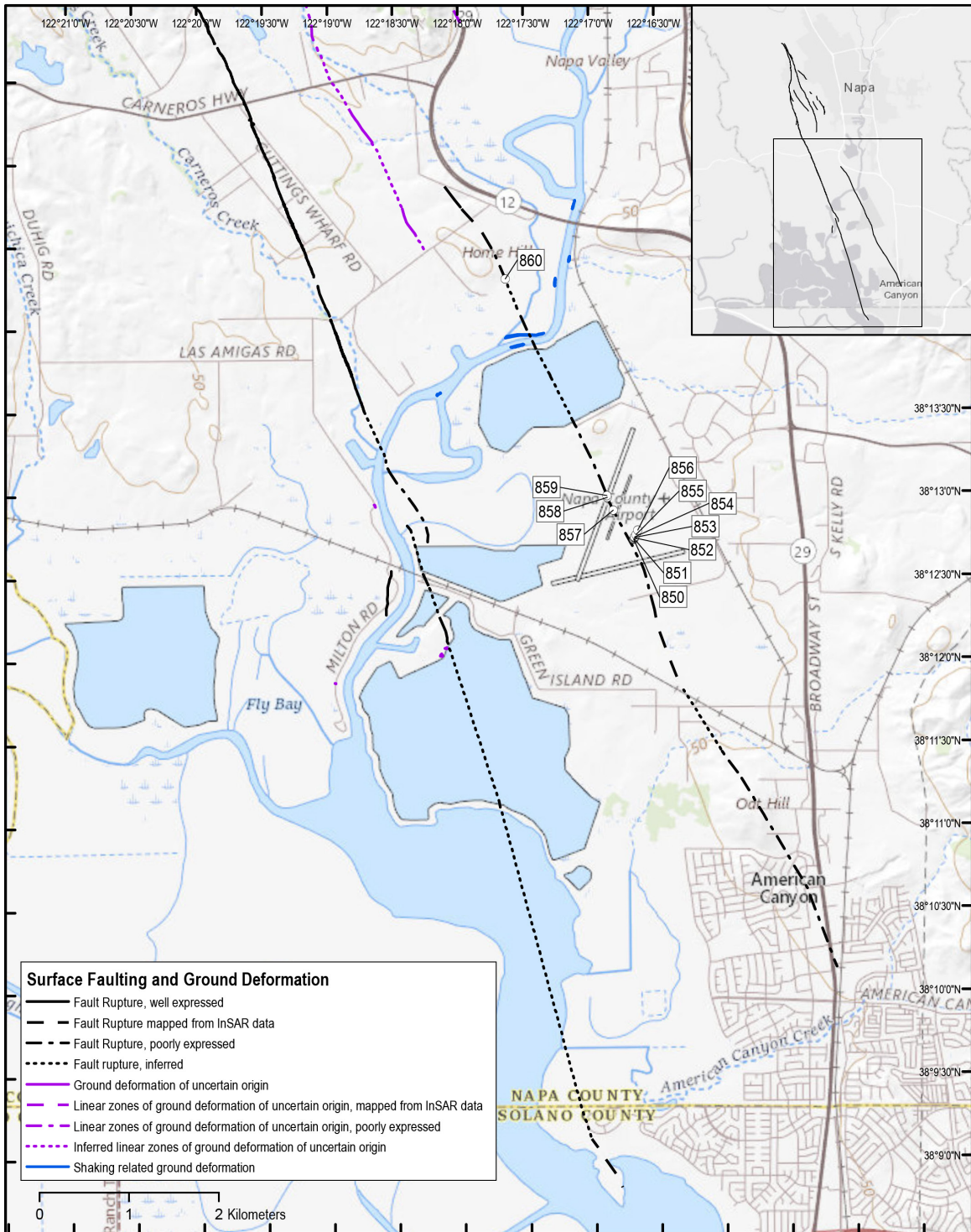


Figure 8.1. Rupture map showing locations of observation stations 850–860 along Trace G of the West Napa Fault System, California, from Napa County Airport northwest to Ranch Road. Inset shows location of fig. 8.1 relative to full extent of rupture. Shaded relief base from U.S. Geological Survey National Map <https://viewer.nationalmap.gov/advanced-viewer/>.

Station ID: 850 **Observer: Hudnut/Dawson**

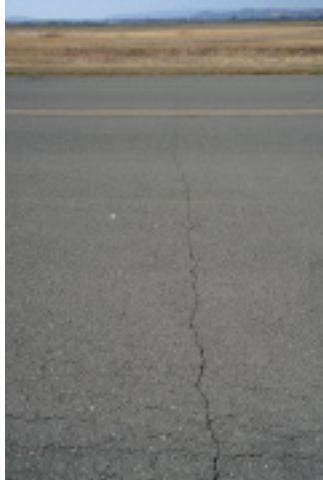
Observation Date	Latitude	Longitude	Offset Feature	Inferred Origin
2014:08:27	38.21208	122.27801	Pavement	Uncertain

Description

Fracture in pavement at airstrip.

Photographer	Camera Coordinates	Photograph Date
Hudnut	38.21205 122.27795	2014:08:27 15:10:46

[High Resolution Photograph](#)



Station ID: 851 **Observer: Hudnut/Dawson**

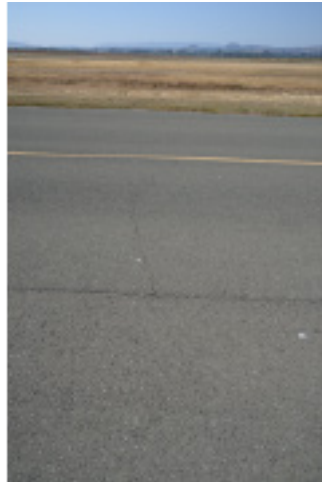
Observation Date	Latitude	Longitude	Offset Feature	Inferred Origin
2014:08:27	38.21214	122.27797	Pavement	Uncertain

Description

Fracture in pavement at airstrip.

Photographer	Camera Coordinates	Photograph Date
Hudnut	38.21211 122.27793	2014:08:27 15:10:39

[High Resolution Photograph](#)

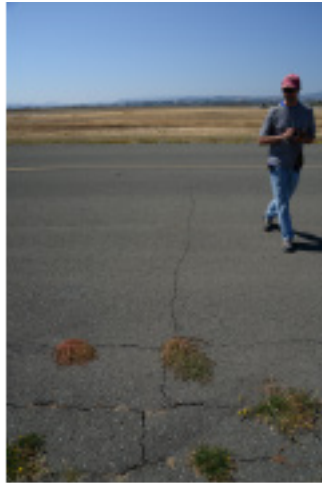


Station ID: 852 **Observer: Hudnut/Dawson**

Observation Date	Latitude	Longitude	Offset Feature	Inferred Origin
2014:08:27	38.21222	122.27792	Pavement	Uncertain

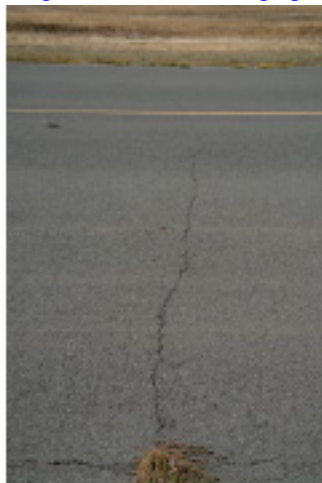
Photographer	Camera Coordinates	Photograph Date
Hudnut	38.21220 122.27787	2014:08:27 15:10:28

[High Resolution Photograph](#)



Photographer	Camera Coordinates	Photograph Date
Hudnut	38.21220 122.27786	2014:08:27 15:10:29

[High Resolution Photograph](#)



Station ID: 852

Observer: Hudnut/Dawson

Photographer	Camera Coordinates		Photograph Date
Dawson	38.21693	122.27329	2014:08:27 15:11:15

[High Resolution Photograph](#)



Photographer	Camera Coordinates		Photograph Date
Hudnut	38.21218	122.27792	2014:08:27 15:11:43

[High Resolution Photograph](#)



Station ID: 852**Observer: Hudnut/Dawson**

Photographer	Camera Coordinates		Photograph Date
Dawson	38.21487	122.28085	2014:08:27 15:17:29

[High Resolution Photograph](#)



Station ID: 853**Observer: Hudnut/Dawsom**

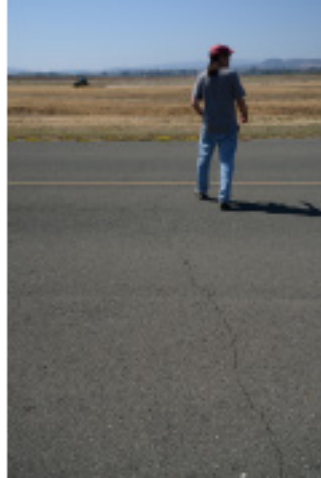
Observation Date	Latitude	Longitude	Offset Feature	Inferred Origin
2014:08:27	38.21228	122.27789	Pavement	Uncertain

Description

Fracture in pavement at airstrip.

Photographer	Camera Coordinates		Photograph Date
Hudnut	38.21225	122.27782	2014:08:27 15:09:02

[High Resolution Photograph](#)

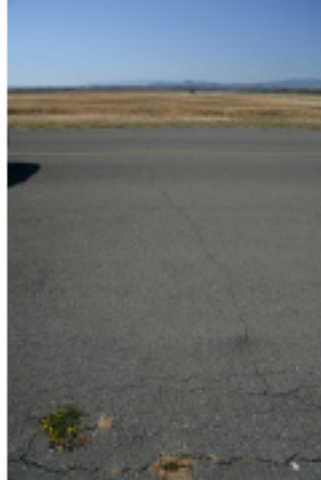


Station ID: 853

Observer: Hudnut/Dawsom

Photographer	Camera Coordinates		Photograph Date
Hudnut	38.21225	122.27785	2014:08:27 15:10:19

[High Resolution Photograph](#)



Photographer	Camera Coordinates		Photograph Date
Hudnut	38.21225	122.27792	2014:08:27 15:11:36

[High Resolution Photograph](#)



Station ID: 854 **Observer: Hudnut/Dawson**

Observation Date	Latitude	Longitude	Offset Feature	Inferred Origin
2014:08:27	38.21232	122.27786	Pavement	Uncertain

Description

Fracture in pavement at airstrip.

Photographer	Camera Coordinates	Photograph Date
Hudnut	38.21235 122.27778	2014:08:27 15:08:46

[High Resolution Photograph](#)



Photographer	Camera Coordinates	Photograph Date
Dawson	38.21183 122.27839	2014:08:27 15:15:24

[High Resolution Photograph](#)



Station ID: 855			Observer: Hudnut/Dawson	
------------------------	--	--	--------------------------------	--

Observation Date	Latitude	Longitude	Offset Feature	Inferred Origin
2014:08:27	38.21255	122.27772	Pavement	Uncertain

Description
Fracture across yellow line at airport strip.

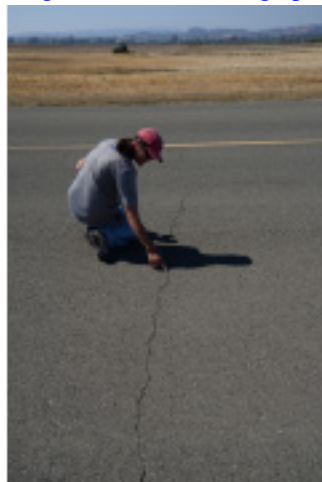
Photographer	Camera Coordinates	Photograph Date
Hudnut	38.21260 122.27764	2014:08:27 15:07:50

[High Resolution Photograph](#)



Photographer	Camera Coordinates	Photograph Date
Hudnut	38.21249 122.27769	2014:08:27 15:08:11

[High Resolution Photograph](#)



Station ID: 856	Observer: Hudnut/Dawson			
------------------------	--------------------------------	--	--	--

Observation Date	Latitude	Longitude	Offset Feature	Inferred Origin
2014:08:27	38.21298	122.27746	Pavement	Uncertain

Description
Slight bend in yellow line along airstrip.

Photographer	Camera Coordinates	Photograph Date
Hudnut	38.21225 122.27795	2014:08:27 15:09:30

[High Resolution Photograph](#)



Photographer	Camera Coordinates	Photograph Date
Hudnut	38.21218 122.27798	2014:08:27 15:10:00

[High Resolution Photograph](#)



Station ID: 856**Observer: Hudnut/Dawson**

Photographer**Camera Coordinates****Photograph Date**

Dawson

38.21133

122.27877

2014:08:27 15:13:23

[High Resolution Photograph](#)

Photographer**Camera Coordinates****Photograph Date**

Dawson

38.21194

122.27824

2014:08:27 15:16:33

[High Resolution Photograph](#)

Station ID: 857	Observer: Hudnut/Dawson			
------------------------	--------------------------------	--	--	--

Observation Date	Latitude	Longitude	Offset Feature	Inferred Origin
2014:08:27	38.21501	122.28061	Pavement	Tectonic

Description
Fractures across entire airstrip through this point.

Photographer	Camera Coordinates	Photograph Date
Hudnut	38.21492 122.28053	2014:08:27 15:18:47

[High Resolution Photograph](#)



Photographer	Camera Coordinates	Photograph Date
Hudnut	38.21496 122.28056	2014:08:27 15:19:05

[High Resolution Photograph](#)



Station ID: 857

Observer: Hudnut/Dawson

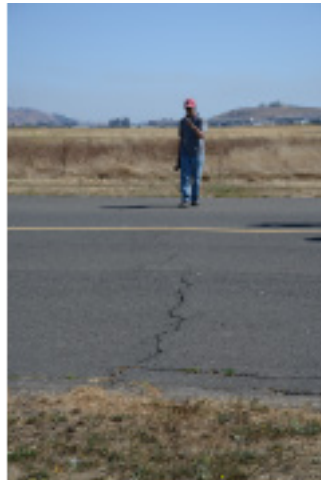
Photographer	Camera Coordinates		Photograph Date
Hudnut	38.21500	122.28058	2014:08:27 15:19:27

[High Resolution Photograph](#)



Photographer	Camera Coordinates		Photograph Date
Hudnut	38.21511	122.28069	2014:08:27 15:19:45

[High Resolution Photograph](#)



Station ID: 857

Observer: Hudnut/Dawson

Photographer	Camera Coordinates		Photograph Date
Hudnut	38.21511	122.28068	2014:08:27 15:19:49

[High Resolution Photograph](#)



Photographer	Camera Coordinates		Photograph Date
Hudnut	38.21506	122.28046	2014:08:27 15:21:46

[High Resolution Photograph](#)



Photographer	Camera Coordinates		Photograph Date
Hudnut	38.21507	122.28046	2014:08:27 15:21:49

[High Resolution Photograph](#)



Station ID: 857

Observer: Hudnut/Dawson

Photographer	Camera Coordinates		Photograph Date
Hudnut	38.21509	122.28044	2014:08:27 15:22:03

[High Resolution Photograph](#)



Photographer	Camera Coordinates		Photograph Date
Hudnut	38.21510	122.28043	2014:08:27 15:22:08

[High Resolution Photograph](#)



Station ID: 857**Observer: Hudnut/Dawson**

Photographer	Camera Coordinates		Photograph Date
Dawson	38.21500	122.28082	2014:08:27 15:25:04

[High Resolution Photograph](#)



Photographer	Camera Coordinates		Photograph Date
Dawson	38.21500	122.28082	2014:08:27 15:25:26

[High Resolution Photograph](#)



Photographer	Camera Coordinates		Photograph Date
Dawson	38.21500	122.28082	2014:08:27 15:27:22

[High Resolution Photograph](#)



Station ID: 857

Observer: Hudnut/Dawson

Photographer	Camera Coordinates		Photograph Date
Dawson	38.21500	122.28082	2014:08:27 15:27:25

[High Resolution Photograph](#)



Photographer	Camera Coordinates		Photograph Date
Dawson	38.21500	122.28082	2014:08:27 15:27:59

[High Resolution Photograph](#)



Photographer	Camera Coordinates		Photograph Date
Dawson	38.21500	122.28082	2014:08:27 15:28:56

[High Resolution Photograph](#)



Station ID: 857**Observer: Hudnut/Dawson**

Photographer	Camera Coordinates		Photograph Date
Dawson	38.21500	122.28082	2014:08:27 15:28:58

[High Resolution Photograph](#)



Station ID: 858**Observer: Hudnut/Dawson**

Observation Date	Latitude	Longitude	Offset Feature	Inferred Origin
2014:08:27	38.21631	122.28132	Pavement	Tectonic

Photographer	Camera Coordinates		Photograph Date
Dawson	38.21658	122.28122	2014:08:27 15:34:04

[High Resolution Photograph](#)



Station ID: 858

Observer: Hudnut/Dawson

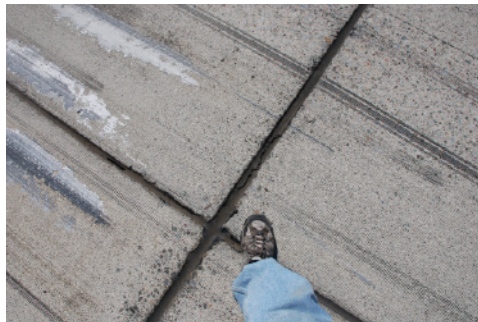
Photographer	Camera Coordinates		Photograph Date
Dawson	38.21658	122.28122	2014:08:27 15:34:07

[High Resolution Photograph](#)



Photographer	Camera Coordinates		Photograph Date
Dawson	38.21658	122.28122	2014:08:27 15:36:08

[High Resolution Photograph](#)



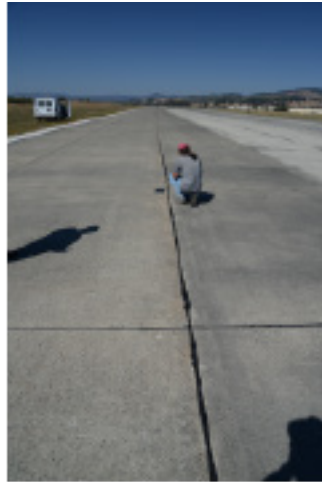
Station ID: 859	Observer: Hudnut/Dawson			
------------------------	--------------------------------	--	--	--

Observation Date	Latitude	Longitude	Offset Feature	Inferred Origin
2014:08:27	38.21651	122.28140	Pavement	Tectonic

Description
Expansion in pavement? Along fault trace.

Photographer	Camera Coordinates	Photograph Date
Hudnut	38.21653 122.28136	2014:08:27 15:27:23

[High Resolution Photograph](#)



Photographer	Camera Coordinates	Photograph Date
Hudnut	38.21650 122.28139	2014:08:27 15:27:43

[High Resolution Photograph](#)



Station ID: 860		Observer: Hitchcock/Lutz		
Observation Date	Latitude	Longitude	Offset Feature	Inferred Origin
2014:09:16	38.23829	122.29417	Soil	Uncertain
Description				
Fissures along southeast edge of road. Likely fresh based on absence of infilling or vegetation growth.				
Photographer	Camera Coordinates		Photograph Date	
Hitchcock/Lutz			2014:09:16 13:53:56	

[High Resolution Photograph](#)



Photographer	Camera Coordinates	Photograph Date
Hitchcock/Lutz		2014:09:16 13:54:23

[High Resolution Photograph](#)

