

U.S. Geological Survey North Central Climate Adaptation Science Center

Prepared in cooperation with the University of Colorado Boulder

Synthesis of Climate and Ecological Science to Support Grassland Management Priorities in the North Central Region

Open-File Report 2023–1036

Synthesis of Climate and Ecological Science to Support Grassland Management Priorities in the North Central Region

By Christine D. Miller Hased, Heather M. Yocum, Imtiaz Rangwala, Amy J. Symstad, Jeff M. Martin, Kevin Ellison, David J. A. Wood, Marissa Ahlering, Katherine J. Chase, Shelley Crausbay, Ana D. Davidson, Julie Elliott, Jim Giocomo, David L. Hoover, Toni Klemm, David Lightfoot, Owen P. McKenna, Brian W. Miller, Danika Mosher, R. Chelsea Nagy, Jesse B. Nippert, Jeremy Pittman, Lauren Porensky, Jilmarie Stephens, Alexander V. Zale

U.S. Geological Survey North Central Climate Adaptation Science Center
Prepared in cooperation with the University of Colorado Boulder

Open-File Report 2023–1036

U.S. Department of the Interior
U.S. Geological Survey

U.S. Geological Survey, Reston, Virginia: 2023

For more information on the USGS—the Federal source for science about the Earth, its natural and living resources, natural hazards, and the environment—visit <https://www.usgs.gov> or call 1–888–392–8545.

For an overview of USGS information products, including maps, imagery, and publications, visit <https://store.usgs.gov/> or contact the store at 1–888–275–8747.

Any use of trade, firm, or product names is for descriptive purposes only and does not imply endorsement by the U.S. Government.

Although this information product, for the most part, is in the public domain, it also may contain copyrighted materials as noted in the text. Permission to reproduce copyrighted items must be secured from the copyright owner.

Suggested citation:

Miller Hesed, C.D., Yocum, H.M., Rangwala, I., Symstad, A.J., Martin, J.M., Ellison, K., Wood, D.J. A., Ahlering, M., Chase, K.J., Crausbay, S., Davidson, A.D., Elliott, J., Giocomo, J., Hoover, D.L., Klemm, T., Lightfoot, D., McKenna, O.P., Miller, B.W., Mosher, D., Nagy, R.C., Nippert, J.B., Pittman, J., Porensky, L., Stephens, J., and Zale, A.V., 2023, Synthesis of climate and ecological science to support grassland management priorities in the North Central Region: U.S. Geological Survey Open-File Report 2023–1036, 21 p., <https://doi.org/10.3133/ofr20231036>.

ISSN 2331-1258 (online)

Preface

This report presents findings from the project “A Synthesis of Climate Impacts, Stakeholder Needs, and Adaptation in Northern Great Plains Grassland Ecosystems” (hereafter, the Grasslands Synthesis Project) led by the North Central Climate Adaptation Science Center (NC CASC). Grassland ecosystems in the NC CASC region support local economies, Tribal communities, livestock grazing, diverse plant and animal communities, and large-scale migrations of ungulates and multiple bird guilds. Understanding how climate change and variability will impact grassland ecosystems is crucial for successful management of grasslands in the 21st century. The NC CASC began the Grasslands Synthesis Project in 2020 to establish a baseline of information to best serve its resource managers and help meet regional grassland management goals. This project had two primary goals: (1) to synthesize the management goals and challenges for grassland managers across the region and (2) to assess the state-of-the-science and identify knowledge gaps for addressing these goals and challenges within the context of climate change. The publication of the “Grassland Management Priorities for the North Central Region” report (Miller Hesel and Yocum, 2023) report accomplished the first goal, which identified information needed to meet grassland management goals in the North Central region within the context of climate change. This report addresses those identified information needs by synthesizing the existing climate and ecological science relevant to grassland management priorities and identifying where more research is needed.

The NC CASC is a partnership between the U.S. Geological Survey (USGS), the University of Colorado Boulder, and five consortium partners—Conservation Science Partners, Great Plains Tribal Water Alliance, South Dakota State University, University of Montana, and Wildlife Conservation Society. The NC CASC is part of a network of regional Climate Adaptation Science Centers ([fig. Pr1](#)) that serve resource managers by developing the science and tools needed to address the impacts of climate change on the Nation’s land, water, fish, wildlife, and cultural heritage resources. The NC CASC serves Federal, State, and Tribal resource managers in Montana, Wyoming, Colorado, North Dakota, South Dakota, Nebraska, and Kansas.

Climate Adaptation Science Center (CASC) Regions

The CASCs collaborate across boundaries to address shared ecosystems, watersheds, and landscapes.

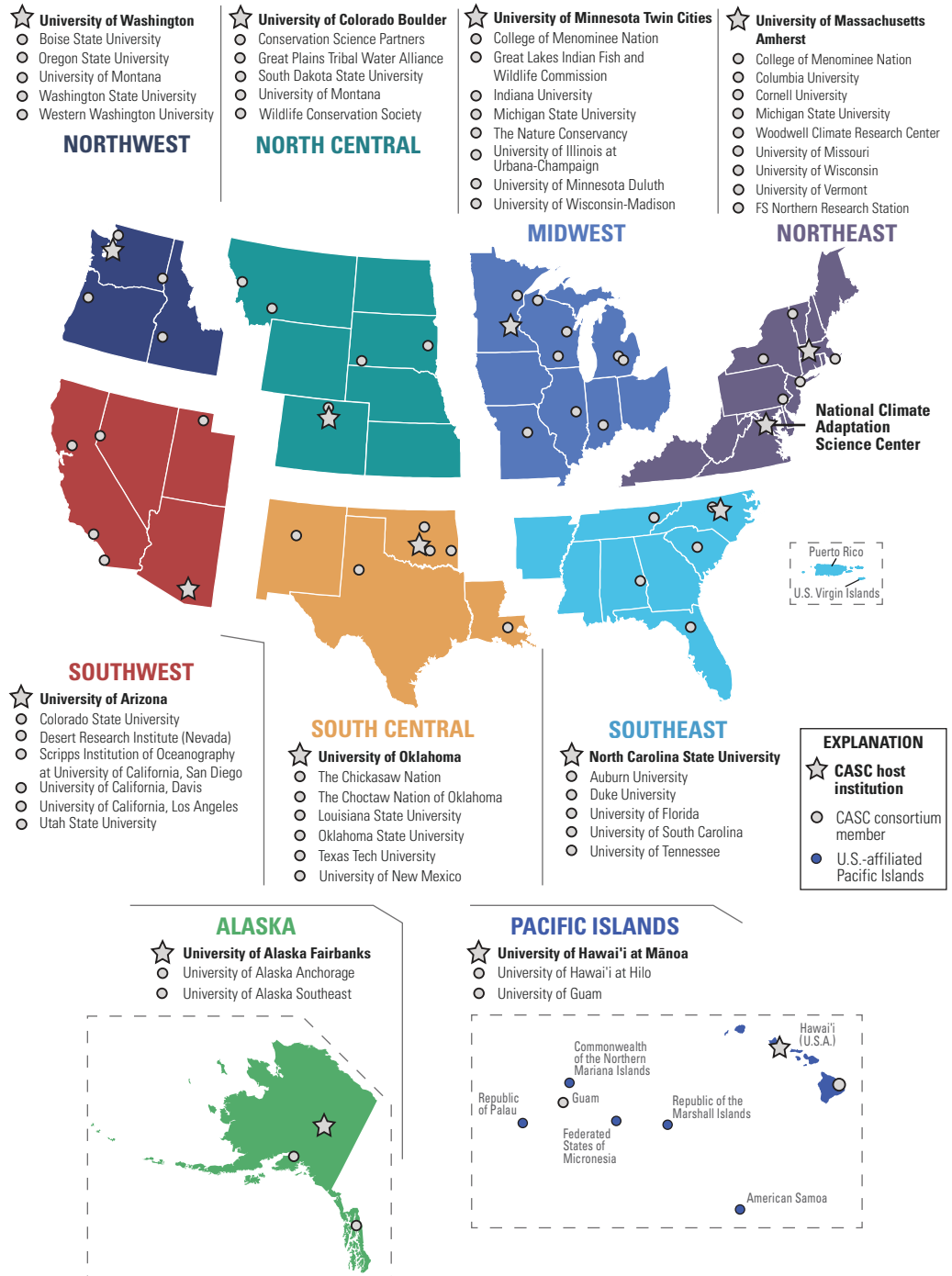


Figure Pr1. Schematic diagram of the Climate Adaptation Science Center Network and its associated territories and affiliated Pacific islands showing the Climate Adaptation Science Center regions overlain by the location of the National Climate Adaptation Science Center, CASC host institutions, and CASC consortium members.

Acknowledgments

We are grateful to the members of the Management Priorities Working Group and the Advisory Committee for cooperatively engaging in the generation of results presented in this report. The Management Priorities Working Group consisted of Marissa Ahlering (The Nature Conservancy [TNC]), Aparna Bamzai-Dodson (U.S. Geological Survey [USGS]), Jon P. Beckmann (Kansas Department of Wildlife and Parks), Emily Boyd-Valandra (Sicangu Lakota Oyate and Rosebud Sioux Tribe), Biologist and Indigenous Conservation Consultant), Molly Cross (Wildlife Conservation Society), Kimberly R. Hall (TNC), Brian Miller (USGS), Danika Mosher (National Park Service Research Assistant, Student contractor to USGS), James Rattling Leaf, Sr. (Great Plains Tribal Water Alliance), Ian Tator (Wyoming Game and Fish Department), and Ben Wheeler (Pheasants Forever and Quail Forever). The Advisory Committee included David Augustine (U.S. Department of Agriculture [USDA], Agricultural Research Service), Katie Bills Walsh (USDA, Agricultural Research Service), Alice Boyle (Kansas State University), Anthony Ciocco (Bureau of Indian Affairs), Lisa Dilling (Cooperative Institute for Research in Environmental Sciences, University of Colorado Boulder), Laura Edwards (South Dakota State University), Brad Guhr (Dyck Arboretum of the Plains), Brice Hanberry (USDA, Forest Service), Chris Helzer (TNC), Rachel Keen (Kansas State University), Doug Kluck (National Oceanic and Atmospheric Administration), Brian Obermeyer (TNC), Kim O'Keefe (University of Wisconsin-Madison), Graeme Patterson (Joint Venture 8 [JV8] Central Grasslands Conservation Initiative), Dave Pellatz (Thunder Basin Grasslands Prairie Ecosystem Association), Ronald Pritchert (U.S. Fish and Wildlife Service), Geri Proctor (USDA, Forest Service), Alden Shallcross (Bureau of Land Management), Madeleine Rubenstein (USGS), Stefan Tangen (Great Plains Tribal Water Alliance), Alisa Wade (USGS), Catherine Wightman (Northern Great Plains Joint Venture), and Ben Zuckerberg (University of Wisconsin-Madison). We also wish to thank Sean Finn (U.S. Fish and Wildlife Service) and David Mushet (USGS) for their review of the entire report.

This research was funded by the U.S. Geological Survey.

Contents

Prefaceiii

Acknowledgmentsv

Abstract1

Introduction.....1

Climate Change Observations and Projections2

Water Availability and Wildfire.....2

Vegetation3

Wildlife.....3

Large-Bodied Ruminants and Grazing5

Land-Use Change.....6

Remaining Research Needs7

References Cited.....7

Figure

1. Climate Adaptation Science Center Network schematic diagram iv

Contributors

Marissa Ahlering, Lead Scientist, The Nature Conservancy

Katherine J. Chase, Surface-Water Specialist, U.S. Geological Survey, Wyoming-Montana Water Science Center

Shelley Crausbay, Senior Scientist, Conservation Science Partners, Inc.

Ana D. Davidson, Research Scientist III, Colorado Natural Heritage Program and Department of Fish, Wildlife and Conservation Biology, Colorado State University

Julie Elliott, Rangeland Management Specialist, U.S. Department of Agriculture, Natural Resources Conservation Service and Northern Plains Climate Hub

Kevin Ellison, Northern Great Plains Program Manager, American Bird Conservancy

Jim Giocomo, Central Region Director, American Bird Conservancy

David L. Hoover, Research Ecologist, U.S. Department of Agriculture, Agricultural Research Service, Rangeland Resources and Systems Research Unit

Toni Klemm, Postdoctoral Research Associate, U.S. Department of Agriculture, Northern Plains Climate Hub

David Lightfoot, Senior Collection Manager, Research Associate Professor, Department of Biology, Museum of Southwestern Biology, University of New Mexico

Jeff M. Martin, Assistant Professor, Department of Natural Resource Management, South Dakota State University

Owen P. McKenna, Research Ecologist, U.S. Geological Survey Northern Prairie Wildlife Research Center

Brian W. Miller, Research Ecologist, U.S. Geological Survey, North Central Climate Adaptation Science Center

Christine D. Miller Hesed, Postdoctoral Researcher, Grasslands Synthesis Research Coordinator, North Central Climate Adaptation Science Center, Cooperative Institute for Research in Environmental Sciences, University of Colorado Boulder

Danika Mosher, National Park Service Research Assistant, Student Contractor to U.S. Geological Survey North Central Climate Adaptation Science Center

R. Chelsea Nagy, Research Scientist II, Earth Lab, Cooperative Institute for Research in Environmental Sciences, University of Colorado Boulder

Jesse B. Nippert, Professor, Division of Biology, Kansas State University

Jeremy Pittman, Associate Professor, School of Planning, University of Waterloo, Canada

Lauren Porensky, Research Rangeland Management Specialist, U.S. Department of Agriculture, Agricultural Research Service, Rangeland Resources and Systems Research Unit/mtiaz Rangwala, Research Scientist III, North Central Climate Adaptation Science Center, Cooperative Institute for Research in Environmental Sciences, University of Colorado Boulder

Jilmarie Stephens, Postdoctoral Researcher, North Central Climate Adaptation Science Center, Cooperative Institute for Research in Environmental Sciences, University of Colorado Boulder

Amy J. Symstad, Research Ecologist, U.S. Geological Survey, Northern Prairie Wildlife Research Center

David J. A. Wood, Ecologist, U.S. Geological Survey, Northern Rocky Mountain Research Center

Heather M. Yocum, Research Scientist II, North Central Climate Adaptation Science Center, Cooperative Institute for Research in Environmental Sciences, University of Colorado Boulder

Alexander V. Zale, Unit Leader, U.S. Geological Survey, Montana Cooperative Fishery Research Unit, Montana State University

Conversion Factors

International System of Units to U.S. customary units

Multiply	By	To obtain
	Mass	
kilogram (kg)	2.205	pound, avoirdupois (lb)

Temperature in degrees Fahrenheit (°F) may be converted to degrees Celsius (°C) as follows:

$$^{\circ}\text{C} = (^{\circ}\text{F} - 32) / 1.8.$$

Abbreviations

ARS	U.S. Department of Agriculture, Agricultural Research Service
C ₃	photosynthetic pathway used by cool season grasses in which the first carbon compound produced contains three carbon atoms
C ₄	photosynthetic pathway used by warm season grasses in which the first carbon compound produced contains four carbon atoms
CIRES	Cooperative Institute for Research in Environmental Sciences
CO ₂	carbon dioxide
NC CASC	North Central Climate Adaptation Science Center
NGO	nongovernmental organization
TNC	The Nature Conservancy
USDA	U.S. Department of Agriculture
USGS	U.S. Geological Survey

Synthesis of Climate and Ecological Science to Support Grassland Management Priorities in the North Central Region

By Christine D. Miller Hesed,¹ Heather M. Yocum,¹ Imtiaz Rangwala,¹ Amy J. Symstad,² Jeff M. Martin,³ Kevin Ellison,⁴ David J. A. Wood,⁵ Marissa Ahlering,⁶ Katherine J. Chase,⁷ Shelley Crausbay,⁸ Ana D. Davidson,⁹ Julie Elliott,¹⁰ Jim Giocomo,⁴ David L. Hoover,¹¹ Toni Klemm,¹² David Lightfoot,¹³ Owen P. McKenna,¹⁴ Brian W. Miller,¹⁵ Danika Mosher,¹⁶ R. Chelsea Nagy,¹⁷ Jesse B. Nippert,¹⁸ Jeremy Pittman,¹⁹ Lauren Porensky,¹¹ Jilmarie Stephens,¹ Alexander V. Zale²⁰

Abstract

Grasslands in the Great Plains are of ecological, economic, and cultural importance in the United States. In response to a need to understand how climate change and variability will

¹North Central Climate Adaptation Science Center, Cooperative Institute for Research in Environmental Sciences, University of Colorado Boulder.

²U.S. Geological Survey, Northern Prairie Wildlife Research Center.

³Department of Natural Resource Management, South Dakota State University.

⁴American Bird Conservancy.

⁵U.S. Geological Survey, Northern Rocky Mountain Science Center.

⁶The Nature Conservancy.

⁷U.S. Geological Survey, Wyoming-Montana Water Science Center.

⁸Conservation Science Partners, Inc.

⁹Colorado Natural Heritage Program and Department of Fish, Wildlife and Conservation Biology, Colorado State University.

¹⁰U.S. Department of Agriculture, Natural Resources Conservation Service and Northern Plains Climate Hub.

¹¹U.S. Department of Agriculture, Agricultural Research Service, Rangeland Resources and Systems Research Unit.

¹²U.S. Department of Agriculture, Northern Plains Climate Hub.

¹³Department of Biology, Museum of Southwestern Biology.

¹⁴U.S. Geological Survey, Northern Prairie Wildlife Research Center.

¹⁵U.S. Geological Survey, North Central Climate Adaptation Science Center.

¹⁶National Park Service Research Assistant, Student Contractor to U.S. Geological Survey, North Central Climate Adaptation Science Center.

¹⁷Earth Lab, Cooperative Institute for Research in Environmental Sciences, University of Colorado Boulder.

¹⁸Division of Biology, Kansas State University.

¹⁹School of Planning, University of Waterloo, Canada.

²⁰U.S. Geological Survey, Montana Cooperative Fishery Research Unit.

impact grassland ecosystems and their management in the 21st century, the U.S. Geological Survey North Central Climate Adaptation Science Center led a synthesis of peer-reviewed climate and ecology literature relevant to grassland management in the North Central region (Montana, Wyoming, Colorado, North Dakota, South Dakota, Nebraska, and Kansas). This synthesis begins to address grassland managers' information needs and identify research gaps. This report summarizes the impacts of climate change and variability on temperature, water availability, wildfire, vegetation, wildlife, large-bodied ruminants, grazing, and land-use change and the implications for grassland management in the North Central region. This report also identifies areas in which further research is needed.

Introduction

Grasslands are one of the most endangered ecosystems in the world (Knopf and Samson, 1997; Samson and others, 2004; Bardgett and others, 2021); although they occupy nearly 54 percent of global terrestrial landmass, less than 5 percent are legally protected worldwide (Hoekstra and others, 2005). Grassland ecosystems exist in each of the seven States (Montana, Wyoming, Colorado, North Dakota, South Dakota, Nebraska, and Kansas), in the region (hereafter referred to as the "North Central region") serviced by the U.S. Geological Survey North Central Climate Adaptation Science Center (NC CASC). Much of the grasslands in the North Central region have been diminished and degraded by human land use. Understanding how climate change and variability will interact with existing stressors to impact grassland ecosystems is crucial for successful management of grasslands in the 21st century. In 2020, the NC CASC began a project to establish a baseline of information to best serve grassland managers (that is, those who develop grassland management plans or implement those plans on the ground) at Federal, State, and Tribal agencies and nongovernmental organizations (NGOs) and to help meet regional grassland management goals. This project,

“A Synthesis of Climate Impacts, Stakeholder Needs, and Adaptation in Northern Great Plains Grassland Ecosystems” (hereafter, the Grasslands Synthesis Project), had two primary goals: (1) to synthesize the management goals and challenges for grassland managers across the region and (2) to assess the state-of-the-science to identify knowledge gaps for addressing these goals and challenges within the context of climate change. This report meets the second goal by addressing the grassland management information needs that were identified in “Grassland Management Priorities for the North Central Region” (Miller Hesed and Yocum, 2023). Because of the multidimensional nature of the information needs, which require consideration of interconnections among many factors, the authors of this synthesis employed a narrative-style literature review to “synthesize insights from a variety of perspectives and disciplines, or areas where insufficient data exists [sic] to conduct a systematic review or meta-analysis” (Sovacool and others, 2018, p. 23). Although this report does not address all identified information needs, we reviewed and summarized relevant climate change observations and projections and their expected effects on water availability, wildfire, vegetation, wildlife, grazing, and land-use change. A forthcoming, full report is planned to provide more detail on each of these topics and identify areas where additional research is needed.

Climate Change Observations and Projections

Temperatures across the North Central region have increased by 1–2 degrees Fahrenheit (°F) since the early 1900s (Vose and others, 2017; Mufson and others, 2019), and they are projected to increase by 4–6 °F by the mid-21st century and 5–10 °F by the late-21st century, depending on future greenhouse gas emissions (Ojima and others, 2021). Precipitation has increased across much of the region in all seasons (Garbrecht and others, 2004; Easterling and others, 2017; Zhang and others, 2021). Climate models project significant increases in winter and spring precipitation and plausible decreases in summer precipitation (Easterling and others, 2017; Whitlock and others, 2017). Warmer temperatures are expected to offset increases in future precipitation and affect water demand and availability (Vicente-Serrano and others, 2020). Changing seasonal patterns of water availability such as soil moisture or streamflow are expected, which could include wetter springs and drier late-summers and falls (Mankin and others, 2017). Rapidly evolving (flash) droughts and hotter droughts are projected to increase because of a warmer atmosphere and increases in the atmospheric evaporative demand (thirst; Bradford and others, 2020; Pendergrass and others, 2020). The North Central region is prone to large year-to-year variability in temperature and precipitation. Climate change is expected to further increase the magnitude of this variability (Conant and others, 2018; Douville and others, 2021).

Water Availability and Wildfire

Climate change impacts on temperature and precipitation will in turn impact water availability and wildfire behavior. Increased temperatures will result in more precipitation falling as rain rather than snow in the future (Trenberth, 2011), leading to more runoff and streamflow in winter and spring and decreased runoff and streamflow in late summer and fall, with some spatial variation (Bureau of Reclamation, 2016). The Missouri Basin in Colorado has experienced increases in annual runoff in the eastern parts and decreases in the western and southern parts of the basin since the 1960s (Norton and others, 2014; Dudley and others, 2019). Future projections suggest modest increases in annual streamflow across much of the basin, but with potential decreases seasonally in late summer and fall (Qiao and others, 2014; Conant and others, 2018). However, extreme events and large interannual variability will have a greater influence on water availability in the region as compared with mean changes in the climate (Conant and others, 2018; Douville and others, 2021).

There is considerable uncertainty on how changes in temperature, precipitation, snow, and runoff will affect groundwater recharge (Crosbie and others, 2013; Niraula and others, 2017). Current rates of groundwater extraction in the northern Great Plains (which includes the grassland ecoregions in Montana, Wyoming, North Dakota, South Dakota, and northern Nebraska) are expected to be sustainable (Conant and others, 2018). Increases in precipitation, more precipitation falling as rain, and increases in extreme rain events are expected to increase groundwater recharge (Crosbie and others, 2013; Zhang and others, 2016; Niraula and others, 2017; Wu and others, 2020). However, expected increases in demand for water and subsequent increases in human extraction of groundwater will decrease groundwater storage (Mrad and others, 2020). Soil moisture is expected to decrease under warming temperatures, although increases in winter and spring precipitation will seasonally facilitate high soil water content (Mankin and others, 2017; Douville and others, 2021). The hydrological status of the region’s wetlands, lakes, streams, and groundwater are strongly influenced by the temporal and spatial variability of precipitation timing and intensity and regional land-use patterns (Taylor and others, 2013, McKenna and others, 2019).

Observed and projected increases in wildfire frequency and size are expected from increases in temperature (Dennison and others, 2014; Barbero and others, 2015; Donovan and others, 2017; Gao and others, 2021). The length of the fire season and duration of extreme fire weather have also been increasing (Abatzoglou and others, 2018). Fuel treatments, such as prescribed fires and grazing, are becoming increasingly important for moderating wildfire behavior and intensity in a changing climate (Rocca and others, 2014; Perkins and others, 2019; Starns and others, 2019); however, safe windows for prescribed fire are shortening and changing (Yurkonis and others, 2019).

Vegetation

Climate change impacts grassland vegetation across the North Central region in a context of altered disturbance regimes and the introduction of novel species. Species-specific responses (see, for example, Hoover and others, 2014a, b, 2019, 2021) complicate predicting shifts in composition and diversity, but novel combinations of species are highly likely (Polley and others, 2013). The Great Plains region has already experienced the fastest climate change velocity—the rate at which climate changes with respect to species' current climatic niches—of all regions in North America (Dobrowski and others, 2013). Future acceleration will expose plants to conditions changing more than 20-times faster than grass species experienced during recent periods of evolution (Cang and others, 2016). The balance between cool season (C_3) and warm season (C_4) grasses is likely to shift with climate change, which has critical implications for biodiversity, productivity, livestock forage, and wildlife habitat (Barbehenn and others, 2004; van Vuuren and others, 2006; Hoover and others, 2014a; Zelikova and others, 2014; Gherardi and Sala, 2015; Hoover and others, 2017; Winkler and others, 2019; Klemm and others, 2020). C_3 grasses are cool season grasses that use a photosynthetic pathway in which the first carbon compound produced contains three carbon atoms; C_4 grasses are warm season grasses that use a photosynthetic pathway in which the first carbon compound produced contains four carbon atoms. However, the interactive effects of climate changes and carbon dioxide (CO_2) fertilization on this aspect of vegetation are difficult to predict (Morgan and others, 1998, 2011; Mueller and others, 2016; Reich and others, 2018). Shifts in vegetation composition in response to climate change will be shaped by cooccurring changes in disturbance regimes. Interacting effects of land-use change and disturbance regimes have already facilitated an increase in woody plants in historically grass-dominated areas over the last 100 years (Allred and others, 2021). Carbon dioxide fertilization and climate-change impacts—including aridification and changing fire regimes—also promote woody encroachment into grasslands (Kulmatiski and Beard, 2013; Ratajczak and others, 2014; Gherardi and Sala, 2015; Hoover and others, 2017; O'Connor and others, 2020; Winkler and others, 2019). The most sustainable and efficient management strategy to manage woody encroachment is to minimize the initial spread of woody species into grasslands.

Predicting effects of climate change on invasive species in North Central grasslands would benefit from a clear understanding of the current extent, abundance, and composition of these grasslands. The variety of interspecific interactions that confer biotic resistance to invasive species (see, for example, Dukes 2001; van Ruijven and others, 2003; Emery, 2007; Jordan and others, 2008; Alofs and Fowler, 2013; Perkins and Nowak, 2013; Ansley and others, 2019; Allen and others, 2020) argues for the importance of maintaining high diversity of native species in all parts of the food web to reduce the likelihood of invasion as the climate changes. Plant

communities become more susceptible to invasion when there is a sudden increase in unused resources (Davis and others, 2000). Such conditions are often associated with disturbances, which can be directly (drought, flood) or indirectly (land-use practices) influenced by climate change. Fire in North Central grasslands tends to have either neutral or negative effects on invasive species (Smith and Knapp, 1999; Travnicek and others, 2005; Harmoney, 2007; Ohrtman and others, 2012; Porensky and Blumenthal, 2016; Kobiela and others, 2017; Kral and others, 2018; Bennett and others, 2019; Ahlring and others, 2020; Kral-O'Brien and others, 2019; Symstad and others, 2021). Climate change effects that reduce managers' ability to conduct prescribed fires will likely exacerbate invasions in these ecoregions. Climate and CO_2 effects on the efficacy of chemical and biological control tools suggest that a greater emphasis on early detection of new threats will be critical, as will flexibility and rapid adoption of new management strategies (Ziska, 2020).

Climate change will affect the net primary productivity and timing of plant biomass production, both of which are strongly controlled by climate factors that determine the length of the growing season and the variation in water availability over that period (Fu and others, 2017). Potential increased productivity is indicated in many future climate scenarios (Reeves and others, 2014; Hufkens and others, 2016; Klemm and others, 2020), but this potential is highly dependent on changes in precipitation seasonality, vegetation composition, and the phenotypic plasticity and adaptive capabilities of plant species, all of which have high uncertainty (Mueller and others, 2016; Ficklin and Novick, 2017; Wonkka and others, 2019; Yuan and others, 2019; Knapp and others, 2020).

Grassland ecosystems in the North Central region may undergo transformation to another ecological community; however, such transformations are notoriously difficult to predict (Crausbay and others, 2022). Trajectories of ecological change are expected to be heavily influenced by management (for example, prescribed fire, grazing, and invasive species treatment). Careful, scenario-based consideration of the tradeoffs and viability of resisting, accepting, or directing change will be required (Schuurman and others, 2021).

Wildlife

As much as 15 percent of North American invertebrate and vertebrate species depend on grasslands (Poole and others, 1992; Knopf, 1996; Schneider and others, 2011; Foresman, 2012; South Dakota Department of Game, Fish and Parks, 2014; Colorado Parks and Wildlife, 2015; Dyke and others, 2015; Montana Fish, Wildlife and Parks, 2015; Rohweder, 2015; Wyoming Game and Fish Department, 2017). From mammals to arthropods, these wildlife species play important roles in the ecological processes of the central grasslands of North America. Human-caused changes to the landscape have severely decreased the extent of their range and ecological

4 Synthesis of Climate and Ecological Science to Support Grassland Management Priorities in the North Central Region

function (Ryan and others, 1998; Tschamtkke and others, 2002; Batáry and others, 2012; Venne and others, 2012). Climate change will put additional stress on wildlife populations by synergistically interacting with other environmental disturbances to shift and fragment wildlife habitat and alter the timing of species lifecycles. Species with greater phenotypic plasticity will be better able to adapt to climate-change impacts, whereas species with specialized habitat requirements and limited flexibility in lifecycle timing will be at greater risk of local extirpation. We highlight the impact of climate change on *Cynomys ludovicianus* (black-tailed prairie dogs), grassland birds, fish, and arthropods. (Climate change impacts on *Bison bison* [bison] and other large grazing mammals are synthesized in the “Large-Bodied Ruminants and Grazing” section of this report.)

Cynomys (prairie dogs) played keystone roles in North America’s central grasslands, but the extent of their current influence has been severely decreased (Hoogland, 2006). Despite this, they have critical roles in efforts to restore and manage these ecosystems (Davidson and others, 2012, 2018). Little is known about how climate change will shift or fragment the prairie dog ecosystem. Suitable habitat for black-tailed prairie dogs has been projected into the future under warm-and-wet and hot-and-dry climate scenarios (Davidson, Augustine, and Menefee, 2022). Additionally, the boom-and-bust population cycle caused by sylvatic plague—a nonnative disease to which prairie dogs have no natural, coevolved immunity—destabilizes the prairie dog ecosystem with cascading effects on associated species (Augustine, Dinsmore, and others, 2008; Augustine, Matchett, and others, 2008; Eads and Biggins, 2015; Keuler and others, 2020; Davidson, Augustine, and Jacobsen, 2022). The drivers of plague outbreaks are poorly understood, but seem to result from complex interactions among prairie dog colony size and densities, colony landscape characteristics, climate, and other environmental variables (Collinge and others, 2005a, b; Snäll and others, 2008; Cully and others, 2010; Davidson, Augustine, and Jacobsen, 2022). The increased frequency and duration of drought in the North Central grasslands may increase the frequency of plague epizootics with devastating consequences for species strongly associated with prairie dog “towns.” Drought can also suppress reproduction and population growth rates of prairie dogs, causing colony contractions and local extinctions (Bruggeman and Licht, 2020). Competition between prairie dogs and livestock intensifies as grassland vegetation decreases (Derner and others, 2006; Miller and others, 2007; Augustine and Springer, 2013; Augustine and Derner, 2021). Trends toward or extended periods of decreased grassland vegetation productivity would result in economic stress for livestock producers and increased societal pressures against prairie dogs.

Grassland birds that breed in the North Central region are of significant conservation concern because their populations have declined the most among all habitat-based groups in

North America (Rosenberg and others, 2019). Many projections for climate-based shifts in landbird distributions predict the breeding distributions for grassland birds moving northward with exceptions for sagebrush specialists (Nixon and others, 2016). Overall, grassland birds whose ranges extend into the eastern portion of the northern Great Plains, where the remaining habitat is highly fragmented and isolated, may be even more vulnerable to climate change. Increasing temperatures may lead to higher probabilities of local extinction of grassland birds in highly fragmented landscapes (Jarzyna and others, 2016). Climate change has been demonstrated to have an impact on the timing of migration and the start of the breeding season, and earlier arrival has been documented for 34 species in South Dakota and Minnesota over an approximately 35-year period (Swanson and Palmer, 2009). Other climate change risks for grassland birds include a potential mismatch in the timing of reproduction and availability of necessary food resources for raising young (Visser and others, 2006); increased conflict between human activities, such as haying and the timing of breeding season (McGowan and others, 2021); increased prevalence of disease (Marra and others, 2004; Beard and others, 2016); and the possibility of increased nest failure and mass die-offs from extreme weather and drought (George and others, 1992; Conrey and others, 2016).

Climate change is expected to significantly affect the hydrology of grassland streams and the fish that occupy them. Climate change is expected to exacerbate the physicochemical stresses prairie fishes have evolved to withstand by increasing water temperatures, reducing dissolved oxygen concentrations, increasing toxicity of pollutants through concentration, and altering hydrology (Ficke and others, 2007). The duration and extent of grassland stream intermittency are expected to increase in the face of climate change as marginally perennial streams will trend to greater intermittency, and small intermittent streams will become ephemeral (Covich and others, 1997; Datry and others, 2014). This change will result in a decrease in hydrological connectivity, suitable habitat, and water quality, whereas competition and predation will increase. Regional biodiversity and ecosystem services afforded by prairie fish are therefore expected to decrease (Jaeger and others, 2014). Although warmwater fishes may expand their ranges in some regions (Comte and others, 2013), northward habitat range shifts to accommodate changing climate are unlikely in the North Central Grassland Ecoregions, where most streams flow from the west to the east (Covich and others, 1997). Whether the shifts caused by temporal changes in temperature and discharge will be maladaptive among prairie fishes is unknown. Enhanced prevalence of disease among fishes resulting from climate change is probable (Whitney and others, 2016).

Climate change will synergistically interact with other environmental disturbances to negatively impact many arthropod species. The precise number of arthropod species across the northern Great Plains (Samson and Knopf, 1996) is likely in the tens of thousands of species and includes far more taxa with higher taxonomic levels, such as subphyla,

orders, families, and genera than any other group of animals. Predicted, human-caused climate-change shifts in seasonal temperatures to earlier spring warming and later autumn cooling will cause subsequent parallel shifts in arthropod lifecycles for taxa that can adapt quickly to such changes (see Triplehorn and others, 2005; Whitfield and Purcell, 2012). More specialized species may not be able to adapt quickly to increasing temperatures and lengthening warm seasons because of their genetic inflexibility. Such species may decline and experience local extinctions. Climate change will also impact arthropods through its effects on water availability. Egg development and hatching depend on appropriate moisture conditions. Most arthropods are ultimately dependent upon plants and plant production for food, and seasonal plant production is largely dependent upon moisture availability. As overall regional ambient temperatures increase, pathogens adapted to warmer climates are predicted to move north and to higher elevations. Some disease-vector arthropods, such as ticks and mosquitoes, have already increased in numbers and expanded their geographic distribution northward in North America (Reiter, 2001; Brownstein and others, 2005; Hoy and others, 2021). Targeted geographic arthropod inventories, long-term monitoring, and experimental research are needed to adequately understand the ecologies of Great Plains arthropods, which is necessary to determine and plan for their conservation needs.

For all wildlife species, conservation in the face of climate change must incorporate consideration of socioeconomic context and policy and relevant spatial scales. Grassland wildlife priorities and outcomes in the North Central region are intrinsically tied to crop policies and socioeconomic views and values of grasslands (Drum and others, 2015). Public land use and rangeland conditions impact the availability and quality of wildlife habitat. Movement ecology and dispersal ability in a fragmented ecosystem are the main factors driving scale-dependent climate adaptation and management challenges (Allen and Singh, 2016). Managing for a suite of grassland wildlife requires the creation and maintenance of habitat heterogeneity (Fuhlendorf and Engle, 2001). Identifying where to prioritize conservation actions, such as protection, habitat reconstruction, or habitat restoration that will support current and future species' population needs is one of the greatest challenges for managing wildlife (Anderson and Ferree, 2010).

Large-Bodied Ruminants and Grazing

The impacts of climate change through warming temperatures and changes in cold and hot extremes throughout the year will have direct effects on energy budgets of large-bodied grazing species (for example, ranched bison, *Bos taurus* [cattle], *Equus caballus* [horses], *Ovis aries* [sheep], and *Cervus canadensis* [elk]) across the North Central region throughout the 21st century (Barboza and others, 2009; Martin

and Barboza, 2020a, b). Rising mean annual air temperature increases energy use for thermoregulatory and metabolic functions of large-bodied grazers, which results in reduced body size (Martin and others, 2018; Martin and Barboza, 2020b). Across all mammal species, body size predicts most life-history traits, including net dietary requirements and ingestion rates, metabolic rates, growth and reproduction, and mass energy and nutrient flow (Kleiber, 1947; Peters, 1983; Damuth and MacFadden, 1990). Bison body size decreases 16 kilograms (kg) per unit of decadal mean of the Palmer Drought Severity Index, independent of mean air temperature (Martin and Barboza, 2020a); however, body mass of beef cattle has increased by 29.5 percent between 1978 and 2017 because of selective breeding (Klemm and Briske, 2021). Increased body mass during a period of warming is counter to the ecophysiological principals and laws of thermodynamics for endotherms demonstrated in bison (Martin and others, 2018).

Potential decline in the availability and changes to the nutritional quality of palatable forage will indirectly affect grazing species' growth, health, and performance (Klemm and others, 2020a, b; Martin and others, 2018). Climate change will alter the quantity and quality of forage through factors, such as changes in growing season, the timing of water availability, and plant species composition (Polley and others, 2013). Elevated CO₂ is expected to increase the total amount of forage available but could result in lower quality forage for grazers (Dumont and others, 2015; Belesky and Malinowski, 2016; Augustine and others, 2018, 2020). Greater year-to-year variability in precipitation, combined with warming, will lead to greater fluctuation in grassland forage production (Briske and others, 2020; Espeland and others, 2020; Klemm and others, 2020b). Projected decreases in growing season water availability and increases in drought stress will increase nutritional stress for animals, resulting in increased disease, slower growth, and increased mortality for large-bodied ruminants. Although exposure to various direct and indirect effects of climate change (warming, drought, and effects on forage quality and quantity, animal health, and performance) may be similar across the North Central grasslands, sensitivity and adaptive capacity will vary geographically across land jurisdictions and management sectors, such as public, NGOs, Tribal, and private stakeholders (Wilmer and others, 2018; Martin and others, 2021; Pejchar and others, 2021; Shamon and others, 2022). There are several ways to reduce the impacts of climate change on grazing, including converting marginal cropland back to perennial grasslands, increasing plant diversity, and planting nutritious forbs in existing grasslands (Lupo and others, 2013; Miller, 2013). The current rate of change of Earth's climate is without historical reference in at least the last 3 million years, creating extinction risks for many grassland forage species (Zeebe and others, 2016; Hayhoe and others, 2017). Assisted migration may be required to ensure sustained forage production (McLachlan and others, 2007; Mueller and Hellmann, 2008; Bucharova, 2016).

Land-Use Change

Changes in land use are driven by complex interactions between the availability of biophysical resources and socioeconomic factors, both of which will be impacted by climate change (Drummond and others, 2012; Conant and others, 2018; Intergovernmental Panel on Climate Change, 2019; Bentley Brymer and others, 2020; Doidge and others, 2020; National Academies of Sciences, Engineering, and Medicine and others, 2021). Across the North Central grassland ecoregions, land is used for numerous purposes including agricultural uses, such as livestock grazing and cropping; energy development; and urban, suburban, and exurban development. Most grasslands in the region are privately owned, which means that Federal, State, Tribal, and nonprofit organizations and agencies cooperate with private landowners to conserve grassland habitat and prevent grassland conversion to other uses (Miller Hesed and Yocum, 2023).

Climate change will impact which areas are suitable for grazing or growing certain row crops, which areas may be converted to another use—for example, from grazing to row crops, from row crops to grazing, or from one row crop to another—and which areas could be prioritized for restoration. Across the North Central region, some areas will become more suitable for grazing, whereas others will become more suitable for cropping (Ojima and others, 2002; Wick and others, 2016; Hsiang and others, 2017; Conant and others, 2018; Arora and others, 2019). In places where the biophysical suitability for grazing shifts only marginally, socioeconomic factors will likely play a large role in determining whether those areas continue to be grazed and how intensely they are used (Ojima and others, 2002; Reeves and others, 2018); in areas where climate change may result in more favorable conditions for row crops, rangeland and the livelihoods and habitats they can support may be lost. This loss has implications for grassland habitat and grassland-dependent species because sustainably managed rangelands can protect biodiversity, provide additional ecosystem services such as carbon storage, and provide economic benefits to landowners and rural communities (Shorridge, 2003; Brunson and Huntsinger, 2008; Sullivan, 2009; Goldstein and others, 2011; Wick and others, 2016; Augustine and others, 2019; U.S. Department of Agriculture, 2019; Maher and others, 2021; Richter and others, 2021).

The profitability of row crops—such as wheat, corn, and soy—has been a primary driver of grassland loss and agricultural conversion in the North Central region since European colonization (Conant and others, 2018; Doidge and others, 2020; Ott and others, 2021; World Wildlife Fund [WWF], 2021; South Dakota's Conservation Districts, 2022). Changes in temperature and precipitation will alter the areas of the North Central region that are suitable for specific crops (Kunkel and others, 2013; Ballard and others, 2014; Hsiang and others, 2017; Tollerud and others, 2018; Arora and others, 2019). As the climate continues to change, there is increasing interest in genetically modified crops that can withstand extreme events and projected changes in temperature and

precipitation (Moser, 2010; Chen and others, 2015; Tollerud and others, 2018; Rising and Devineni, 2020). The prevailing driver of grassland conversion is the profitability of cropland relative to other uses (Claassen and others, 2011; Dinterman and Katchova, 2019; Doidge and others, 2020; Lark, 2020); however, nonmarket factors, including lifestyle choice and stewardship perspectives, can be more important determinants of land-use decisions than economics and can act to slow the rate of rangeland and grassland conversion to cropping or other uses (Bruno and others, 2020; Doidge and others, 2020).

The energy sector in the North Central region is changing because of economics and public policy aiming to reduce carbon emissions (Conant and others, 2018; Kloesel and others, 2018; Koebrich and others, 2018; Zamuda and others, 2018; U.S. Department of Energy, 2021; Energy Information Administration, 2022). Wind-energy development is the energy sector most likely to grow in the North Central region in the coming decades (Hoen and others, 2018; Koebrich and others, 2018; Ott and others, 2021; U.S. Geological Survey, 2022). Wind-energy development an important contributor to the decarbonization of the energy sector (Edenhofer and others, 2011; Intergovernmental Panel on Climate Change, 2019), but it can fragment and degrade grassland habitats and lead to increased mortality for birds, bats, and other species (Forrest and others, 2004; Ceballos and others, 2010; Wick and others, 2016; Rottler and others, 2018; Ott and others, 2021); however, these impacts can be mitigated by carefully selecting sites for wind turbines to reduce environmental impacts on grassland habitats and species (Shaffer and Buhl, 2016; TNC, undated; Hise and others, 2022).

Urban, suburban, and exurban development has increased in the North Central region since the 1950s and continues to lead to grassland loss, fragmentation, and degradation (Theobald and others, 1996; Brown and others, 2005; Drummond and others, 2012; Reeves and others, 2018). Development and related infrastructure affect grassland-dependent species differently and their effects can extend far beyond the footprint of the infrastructure itself (Klug and others, 2010; Beckmann and others, 2012; Riley and others, 2012; South Dakota Game, Fish and Parks, 2014; Thompson and others, 2015; Rodgers and Koper, 2017; Sawyer and others, 2017; Reeves and others, 2018). Increased urban, suburban, and exurban development may also affect local temperature, water availability, and fire regimes by trapping heat, increasing runoff, and increasing the risk of fire-related hazards (Abatzoglou and others, 2018; Sleeter and others, 2018).

Conservation of grasslands is a shared goal for many Federal, State, and Tribal grassland managers and is a key land use in the region (Miller Hesed and Yocum, 2023; Baier, 2020; Pittman and Ayambire, 2022; WWF, 2020). As climate-driven changes in precipitation and temperature impact agriculture, it may be possible to identify lands that are no longer optimal for row-crop agriculture and target them for restoration or conversion to sustainable grazing land, which can benefit grassland species and rural communities.

Remaining Research Needs

The synthesis of existing climate and ecology research findings presented in this report addresses many of the information needs identified in the first report of this Grasslands Synthesis Project; however, there remain a number of research gaps. First, synthesizing research in the social sciences was outside the scope of this report, but will be necessary to address grassland managers' broadly shared information needs. Second, the North Central Grassland Ecoregion is home to 27 federally recognized Native American Tribes with traditional ecological knowledge. Collaboration with Tribal members and integration of scientific and traditional knowledge could help to inform successful grassland management in the face of climate change. Third, through our review of the climate and ecology literature, we note that there are gaps in the existing information, and that research is needed to:

1. Refine spatial and temporal analyses for future changes in temperature, precipitation, and drought, and improve understanding and quantification of extreme weather patterns and events;
2. Improve understanding and predictions of changes in hydrology, streamflow, and soil moisture for actionable management adaptations;
3. Study interactions among invasive species, fire, CO₂, warming, drought, woody encroachment, grazing, and climate to improve predictions of climate change outcomes for plant community composition and wildlife habitat;
4. Assess and understand current status, future trends, and climate-related risks for plant and animal species populations across the region;
5. Investigate sustainable grazing management practices that are adaptive to changes in forage quality across varying spatial and temporal scales; and
6. Identify and map existing native grasslands, unplowed areas, and successful prairie reconstructions.

Finally, collaboration between researchers and grassland managers in developing future research projects will ensure that the information gained will be relevant, accessible, and usable for informing climate-smart management decisions.

References Cited

- Abatzoglou, J.T., Williams, A.P., Boschetti, L., Zubkova, M., and Kolden, C.A., 2018, Global patterns of interannual climate–fire relationships: *Global Change Biology*, v. 24, no. 11, p. 5164–5175, accessed March 28, 2023, at <https://doi.org/10.1111/gcb.14405>.
- Ahlering, M., Carlson, D., Vacek, S., Jacobi, S., Hunt, V., Stanton, J.C., Knutson, M.G., and Lonsdorf, E., 2020, Cooperatively improving tallgrass prairie with adaptive management: *Ecosphere*, v. 11, no. 4, article e03095, 21 p., accessed March 28, 2023, at <https://doi.org/10.1002/ecs2.3095>.
- Allan, R.P., Hawkins, E., Bellouin, N., and Collins, B., 2021, IPCC, 2021—Summary for policymakers, in Masson-Delmotte, V., Zhai, P., Pirani, A., Connors, S.L., Péan, C., Berger, S., Caud, N., Chen, Y., Goldfarb, L., Gomis, M.I., Huang, M., Leitzell, K., Lonnoy, E., Matthews, J.B.R., Maycock, T.K., Waterfield, T., Yelekçi, O., Yu, R., and Zhou, B., eds., *Climate change 2021—The physical science basis—Contribution of working group I to the sixth assessment report of the intergovernmental panel on climate change*: Cambridge, United Kingdom, Cambridge University Press, 31 p., accessed March 28, 2023, at <https://www.ipcc.ch/report/sixth-assessment-report-working-group-i/>.
- Allen, A.M., and Singh, N.J., 2016, Linking movement ecology with wildlife management and conservation: *Frontiers in Ecology and Evolution*, v. 3, article 155, 13 p., accessed March 28, 2023, at <https://doi.org/10.3389/fevo.2015.00155>.
- Allen, W.J., Wainer, R., Tylianakis, J.M., Barratt, B.I.P., Shadbolt, M.R., Waller, L.P., and Dickie, I.A., 2020, Community-level direct and indirect impacts of an invasive plant favour exotic over native species: *Journal of Ecology*, v. 108, no. 6, p. 2499–2510, accessed March 28, 2023, at <https://doi.org/10.1111/1365-2745.13433>.
- Allred, B.W., Bestelmeyer, B.T., Boyd, C.S., Brown, C., Davies, K.W., Duniway, M.C., Ellsworth, L.M., Erickson, T.A., Fuhlendorf, S.D., Griffiths, T.V., Jansen, V., Jones, M.O., Karl, J., Knight, A., Maestas, J.D., Maynard, J.J., McCord, S.E., Naugle, D.E., Starns, H.D., Twidwell, D., and Uden, D.R., 2021, Improving Landsat predictions of rangeland fractional cover with multitask learning and uncertainty: *Methods in Ecology and Evolution*, v. 12, no. 5, p. 841–849, accessed March 28, 2023, at <https://doi.org/10.1111/2041-210X.13564>.
- Alofs, K.M., and Fowler, N.L., 2013, Loss of native herbaceous species due to woody plant encroachment facilitates the establishment of an invasive grass: *Ecology*, v. 94, no. 3, p. 751–760, accessed March 28, 2023, at <https://doi.org/10.1890/12-0732.1>.
- Anderson, M.G., and Ferree, C.E., 2010, Conserving the stage—Climate change and the geophysical underpinnings of species diversity: *PLoS ONE*, v. 5, no. 7, 10 p., accessed March 28, 2023 at <https://doi.org/10.1371/journal.pone.0011554>.

- Ansley, R.J., Cooper, C., and Zhang, T., 2019, Invasion promotes invasion—Facilitation of C_3 perennial grass dominance in mixed C_3/C_4 grassland by an invasive C_3 woody sprouter (*Prosopis glandulosa*): Ecology and Evolution, v. 9, no. 23, p. 13438–13449, accessed March 28, 2023, at <https://doi.org/10.1002/ece3.5800>.
- Arora, G., Feng, H., Anderson, C.J., and Hennessy, D.A., 2019, Evidence of climate change impacts on crop comparative advantage and land use: Agricultural Economics, v. 51, no. 2, p. 221–236, accessed March 28, 2023, at <https://doi.org/10.1111/agec.12551>.
- Augustine, D.J., Blumenthal, D.M., Springer, T.L., LeCain, D.R., Gunter, S.A., and Derner, J.D., 2018, Elevated CO_2 induces substantial and persistent declines in forage quality irrespective of warming in mixedgrass prairie: Ecological Applications, v. 28, no. 3, p. 721–735, accessed March 28, 2023, at <https://doi.org/10.1002/eap.1680>.
- Augustine, D., Davidson, A., Dickinson, K., and van Pelt, B., 2019, Thinking like a grassland—Challenges and opportunities for biodiversity conservation in the Great Plains of North America: Rangeland Ecology and Management, v. 78, p. 281–295, accessed March 28, 2023, at <https://doi.org/10.1016/j.rama.2019.09.001>.
- Augustine, D.J., and Derner, J.D., 2021, Long-term effects of black-tailed prairie dogs on livestock grazing distribution and mass gain: The Journal of Wildlife Management, v. 85, no. 7, p. 1332–1343, accessed March 28, 2023, at <https://doi.org/10.1002/jwmg.22103>.
- Augustine, D.J., Derner, J.D., Fernández-Giménez, M.E., Porensky, L.M., Wilmer, H., Briske, D.D., and the CARM Stakeholder Group, 2020, Adaptive, multipaddock rotational grazing management—A ranch-scale assessment of effects on vegetation and livestock performance in semiarid rangeland: Rangeland Ecology and Management, v. 73, no. 6, p. 796–810, accessed March 28, 2023, at <https://doi.org/10.1016/j.rama.2020.07.005>.
- Augustine, D.J., Dinsmore, S.J., Wunder, M.B., Dreitz, V.J., and Knopf, F.L., 2008, Response of mountain plovers to plague-driven dynamics of black-tailed prairie dog colonies: Landscape Ecology, v. 23, p. 689–697, accessed March 28, 2023, at <https://doi.org/10.1007/s10980-008-9230-y>.
- Augustine, D.J., Matchett, M.R., Toombs, T.P., Cully, J.F., Jr., Johnson, T.L., and Sidle, J.G., 2008, Spatiotemporal dynamics of black-tailed prairie dog colonies affected by plague: Landscape Ecology, v. 23, p. 255–267, accessed March 28, 2023, at <https://doi.org/10.1007/s10980-007-9175-6>.
- Augustine, D.J., and Springer, T.L., 2013, Competition and facilitation between a native and a domestic herbivore—Trade-offs between forage quantity and quality: Ecological Applications, v. 23, no. 4, p. 850–863, accessed March 28, 2023, at <https://doi.org/10.1890/12-0890.1>.
- Baier, L., 2020, Saving species on private lands—Unlocking incentives to conserve wildlife and their habitats: Lanham, Md., Roman and Littlefield, 341 p.
- Ballard, T., Seager, R., Smerdon, J.E., Cook, B.I., Ray, A.J., Rajagopalan, B., Kushnir, Y., Nakamura, J., and Henderson, N., 2014, Hydroclimate variability and change in the prairie pothole region, the “duck factory” of North America: Earth Interactions, v. 18, no. 14, p. 1–28, accessed March 28, 2023, at <https://doi.org/10.1175/EI-D-14-0004.1>.
- Barbehenn, R.V., Chen, Z., Karowe, D.N., and Spickard, A., 2004, C_3 grasses have higher nutritional quality than C_4 grasses under ambient and elevated atmospheric CO_2 : Global Change Biology, v. 10, p. 1565–1575, accessed March 28, 2023, at <https://doi.org/10.1111/j.1365-2486.2004.00833.x>.
- Barbero, R., Abatzoglou, J.T., Larkin, N.K., and Kolden, C.A., and Stocks, B., 2015, Climate change presents increased potential for very large fires in the contiguous United States: International Journal of Wildland Fire, v. 24, no. 7, p. 892–899, accessed March 28, 2023, at <https://doi.org/10.1071/WF15083>.
- Barboza, P.S., Parker, K.L., and Hume, I.D., 2009, Integrative wildlife nutrition: Heidelberg, Germany, Springer-Verlag, 342 p.
- Bardgett, R.D., Bullock, J.M., Lavorel, S., Manning, P., Schnaffner, U., Ostle, N., Chomel, M., Durigan, G., Fry, E.L., Johnson, D., Lavalley, J.M., Le Provost, G., Luo, S., Png, K., Sankaran, M., Hou, X., Zhou, H., Ma, L., Ren, W., Li, X., Ding, Y., Li, Y., and Shi, H., 2021, Combating global grassland degradation: Nature Reviews, Earth and Environment, v. 2, p. 720–735, accessed March 28, 2023, at <https://doi.org/10.1038/s43017-021-00207-2>.
- Batáry, P., Holzschuh, A., Orci, K.M., Samu, F., and Tschamtké, T., 2012, Responses of plant, insect and spider biodiversity to local and landscape scale management intensity in cereal crops and grasslands: Agriculture, Ecosystems and Environment, v. 146, no. 1, p. 130–136, accessed March 28, 2023, at <https://doi.org/10.1016/j.agee.2011.10.018>.
- Beard, C.B., Eisen, R.J., Barker, C.M., Garofalo, J.F., Hahn, M., Hayden, M., Monaghan, A.J., Ogden, N.H., and Schramm, P.J., 2016, Vector-borne diseases, chap. 5 of The impacts of climate change on human health in the United States—A scientific assessment: Washington, D.C., U.S. Global Change Research Program, p. 129–156, accessed March 28, 2023, at <https://health2016.globalchange.gov/vectorborne-diseases>.
- Beckmann, J.P., Murray, K., Seidler, R.G., and Berger, J., 2012, Human-mediated shifts in animal habitat use—Sequential changes in pronghorn use of a natural gas field in Greater Yellowstone: Biological Conservation, v. 147, no. 1, p. 222–233, accessed March 28, 2023, at <https://doi.org/10.1016/j.biocon.2012.01.003>.

- Belesky, D., and Malinowski, D., 2016, Grassland communities in the USA and expected trends associated with climate change: *Acta Agrobotanica*, v. 69, no. 2, p. 1673–1698, accessed March 28, 2023, at <https://doi.org/10.5586/aa.1673>.
- Bennett, J., Smart, A., and Perkins, L., 2019, Using phenological niche separation to improve management in a Northern Glaciated Plains grassland: *Restoration Ecology*, v. 27, no. 4, p. 745–749, accessed March 28, 2023, at <https://doi.org/10.1111/rec.12932>.
- Bentley Brymer, A.L., Toledo, D., Spiegel, S., Pierson, F., Clark, P.E., and Wulfhorst, J.D., 2020, Social-ecological processes and impacts affect individual and social well-being in a rural Western U.S. Landscape: *Frontiers in Sustainable Food Systems*, v. 4, 16 p., accessed March 28, 2023, at <https://doi.org/10.3389/fsufs.2020.00038>.
- Bradford, J.B., Schlaepfer, D.R., Lauenroth, W.K., and Palmquist, K.A., 2020, Robust ecological drought projections for drylands in the 21st century: *Global Change Biology*, v. 26, no. 7, p. 3906–3919, accessed March 28, 2023, at <https://doi.org/10.1111/gcb.15075>.
- Briske, D.D., Ritten, J.P., Campbell, A.R., Klemm, T., and King, A.E.H., 2020, Future climate variability will challenge rangeland beef cattle production in the Great Plains: *Rangelands*, v. 43, no. 1, p. 29–36, accessed March 28, 2023, at <https://doi.org/10.1016/j.rala.2020.11.001>.
- Brown, D.G., Johnson, K.M., Loveland, T.R., and Theobald, D.M., 2005, Rural land-use trends in the conterminous United States, 1950–2000: *Ecological Applications*, v. 15, no. 6, p. 1851–1863, accessed March 28, 2023, at <https://doi.org/10.1890/03-5220>.
- Brownstein, J.S., Holford, T.R., Fish, D., 2005, Effect of climate change on lyme disease risk in North America: *Ecohealth*, v. 2, no. 1, p. 38–46, accessed August 31, 2022, at <https://doi.org/10.1007/s10393-004-0139-x>.
- Bruggeman, J.E., and Licht, D.S., 2020, Drought-mediated changes in black-tailed prairie dog colonies in the Northern Great Plains: *Journal of Mammalogy*, v. 101, no. 4, p. 1189–1204, accessed March 28, 2023, at <https://doi.org/10.1093/jmammal/gyaa070>.
- Bruno, J.E., Jamsranjav, C., Jablonski, K.E., Dosamantes, E.G., Wilmer, H., and Fernández-Giménez, M.E., 2020, The landscape of North American rangeland social science—A systematic map: *Rangeland Ecology and Management*, v. 73, no. 1, p. 181–193, accessed March 28, 2023, at <https://doi.org/10.1016/j.rama.2019.10.005>.
- Brunson, M.W., and Huntsinger, L., 2008, Ranching as a conservation strategy—Can old ranchers save the new West?: *Rangeland Ecology and Management*, v. 61, no. 2, p. 137–147, accessed March 28, 2023, at <https://doi.org/10.2111/07-063.1>.
- Bucharova, A., 2016, Assisted migration within species range ignores biotic interactions and lacks evidence: *Restoration Ecology*, v. 25, no. 1, p. 14–18, accessed March 28, 2023, at <https://doi.org/10.1111/rec.12457>.
- Bureau of Reclamation, 2016, Basin report—Missouri River: U.S. Department of the Interior, Bureau of Reclamation, accessed October 22, 2021, at <https://www.usbr.gov/climate/secure/docs/2016secure/factsheet/MissouriRiverBasinFactSheet.pdf>.
- Cang, F.A., Wilson, A.A., and Wiens, J.J., 2016, Climate change is projected to outpace rates of niche change in grasses: *Biology Letters*, v. 12, no. 9, 4 p., accessed August 31, 2022, at <https://doi.org/10.1098/rsbl.2016.0368>.
- Ceballos, G., Davidson, A., List, R., Pacheco, J., Manzano-Fischer, P., Santos-Barrera, G., and Cruzado, J., 2010, Rapid decline of a grassland system and its ecological and conservation implications: *PLoS ONE*, v. 5, no. 1, 12 p., accessed August 31, 2022, at <https://doi.org/10.1371/journal.pone.0008562>.
- Chen, C., Bekkerman, A., Afshar, R.K., and Neill, K., 2015, Intensification of dryland cropping systems for bio-feedstock production—Evaluation of agronomic and economic benefits of *Camelina sativa*: *Industrial Crops and Products*, v. 71, p. 114–121, accessed August 31, 2022, at <https://doi.org/10.1016/j.indcrop.2015.02.065>.
- Claassen, R., Carriazo, F., Cooper, J.C., Hellerstein, D., and Ueda, K., 2011, Grassland to cropland conversion in the northern plains—The role of crop insurance, commodity, and disaster programs: U.S. Department of Agriculture, Economic Research Service, 85 p., accessed August 31, 2022, at https://www.ers.usda.gov/webdocs/publications/44876/7477_err120.pdf?v=0.
- Collinge, S.K., Johnson, W.C., Ray, C., Matchett, R., Grensten, J., Jr, Cully, J.F., Gage, K.L., Kosoy, M.Y., Loye, J.E., and Martin, P., 2005a, Landscape structure and plague occurrence in black-tailed prairie dogs on grasslands of the western USA: *Landscape Ecology*, v. 20, p. 941–955, accessed August 31, 2022, at <https://doi.org/10.1007/s10980-005-4617-5>.
- Collinge, S.K., Johnson, W.C., Ray, C., Matchett, R., Grensten, J., Cully, J.F., Gage, K.L., Kosoy, M.Y., Loye, J.E., and Martin, A.P., 2005b, Testing the generality of a trophic-cascade model for plague: *EcoHealth*, v. 2, p. 102–112, accessed August 31, 2022, at <https://doi.org/10.1007/s10393-005-3877-5>.

- Colorado Parks and Wildlife, 2015, State wildlife action plan—A strategy for conserving wildlife in Colorado: Denver, Colo., Colorado Parks and Wildlife, 865 p., accessed August 31, 2022, at <https://cpw.state.co.us/aboutus/Pages/StateWildlifeActionPlan.aspx>.
- Comte, L., Buisson, L., Daufresne, M., and Grenouillet, G., 2013, Climate-induced changes in the distribution of freshwater fish—Observed and predicted trends: *Freshwater Biology*, v. 58, no. 4, p. 625–639, accessed August 31, 2022, at <https://onlinelibrary.wiley.com/doi/pdf/10.1111/fwb.12081>.
- Conant, R.T., Kluck, D., Anderson, M., Badger, A., Boustead, B.M., Derner, J.D., Farris, L., Hayes, M., Livneh, B., McNeeley, S., Peck, D., Shulski, M., and Small, V., 2018, Northern Great Plains, chap 22 of Reidmiller, D.R., Avery, C.W., Easterling, D.R., Kunkel, K., Lewis, K.L.M., Maycock, T.K., and Stewart, B.C., eds., Impacts, risks, and adaptation in the United States, v. 2 of Fourth national climate assessment: Washington, D.C., U.S. Global Change Research Program, accessed August 31, 2022, at <https://doi.org/10.7930/NCA4.2018.CH22>.
- Conrey, R.Y., Skagen, S.K., Yackel Adams, A.A., and Panjabi, A.O., 2016, Extremes of heat, drought and precipitation depress reproductive performance in shortgrass prairie passerines: *Ibis*, v. 158, no. 3, p. 614–629, accessed August 31, 2022, at <https://doi.org/10.1111/ibi.12373>.
- Covich, A.P., Fritz, S.C., Lamb, P.J., Marzolf, R.D., Matthews, W.J., Poiani, K.A., Prepas, E.E., Richman, M.B., and Winter, T.C., 1997, Potential effects of climate change on aquatic ecosystems of the Great Plains of North America: *Hydrological Processes*, v. 11, no. 8, p. 993–1021, accessed August 31, 2022, at [https://doi.org/10.1002/\(SICI\)1099-1085\(19970630\)11:8<993::AID-HYP515>3.0.CO;2-N](https://doi.org/10.1002/(SICI)1099-1085(19970630)11:8<993::AID-HYP515>3.0.CO;2-N).
- Crausbay, S.D., Sofaer, H.R., Cravens, A.E., Chaffin, B.C., Clifford, K.R., Gross, J.E., Knapp, C.N., Lawrence, D.J., Magness, D.R., Miller-Rushing, A.J., Schuurman, G.W., and Stevens-Rumann, C.S., 2022, A science agenda to inform natural resource management decisions in an era of ecological transformation: *Bioscience*, v. 72, no. 1, p. 71–90, accessed August 31, 2022, at <https://doi.org/10.1093/biosci/biab102>.
- Crosbie, R.S., Scanlon, B.R., Mpelasoka, F.S., Reedy, R.C., Gates, J.B., and Zhang, L., 2013, Potential climate change effects on groundwater recharge in the High Plains Aquifer, USA: *Water Resources Research*, v. 49, no. 7, p. 3936–3951, accessed August 31, 2022, at <https://doi.org/10.1002/wrcr.20292>.
- Cully, J.F., Jr., Johnson, T.L., Collinge, S.K., and Ray, C., 2010, Disease limits populations—Black-tailed prairie dogs: *Vector-Borne and Zoonotic Diseases*, v. 10, no. 1, p. 7–15, accessed August 31, 2022, at <https://doi.org/10.1089/vbz.2009.0045>.
- Damuth, J., and MacFadden, B.J., eds., 1990, Body size in mammalian paleobiology—Estimation and biological implications: Cambridge, Mass., Cambridge University Press, 397 p.
- Datry, T., Larned, S.T., and Tockner, K., 2014, Intermittent rivers—A challenge for freshwater ecology: *BioScience*, v. 64, no. 3, p. 229–235, accessed August 31, 2022, at <https://doi.org/10.1093/biosci/bit027>.
- Davidson, A.D., Augustine, D., Jacobsen, H., Pellatz, D., Porensky, L.M., McKee, G., and Duchardt, C., 2022, Boom and bust cycles of black-tailed prairie dog populations in the Thunder Basin grassland ecosystem: *Journal of Mammalogy*, v. 103, no. 5, accessed August 31, 2022, at <https://doi.org/10.1093/jmammal/gyac035>.
- Davidson, A.D., Augustine, D., Menefee, M., Sterling-Krank, L., Van Pelt, B., Theisen Brum, F., Fink, M., Houts, M., and Williamson, M., 2022 Final report—Identifying potential landscapes for conservation across the grasslands of North America—Integrating keystone species, land use patterns, and climate change to enhance current and future grassland restoration efforts: Fort Collins, Colorado State University, 37 p., accessed August 31, 2022, at https://mountainscholar.org/bitstream/handle/10217/235748/CNHP_Final-HOTR_7-14-2022.pdf?sequence=1&isAllowed=y.
- Davidson, A.D., Detling, J.K., and Brown, J.H., 2012, Ecological roles and conservation challenges of social, burrowing, herbivorous mammals in the world’s grasslands: *Frontiers in Ecology and the Environment*, v. 10, no. 9, p. 477–486, accessed August 31, 2022, at <https://doi.org/10.1890/110054>.
- Davidson, A.D., Hunter, E.A., Erz, J., Lightfoot, D.C., McCarthy, A.M., Mueller, J.K., and Shoemaker, K.T., 2018, Reintroducing a keystone burrowing rodent to restore an arid North American grassland—Challenges and successes: *Restoration Ecology*, v. 26, no. 5, p. 909–920, accessed August 31, 2022, at <https://doi.org/10.1111/rec.12671>.
- Davis, M.A., Grime, J.P., and Thompson, K., 2000, Fluctuating resources in plant communities—A general theory of invasibility: *Journal of Ecology*, v. 88, no. 3, p. 528–534, accessed August 31, 2022, at <https://doi.org/10.1046/j.1365-2745.2000.00473.x>.

- Dennison, P.E., Brewer, S.C., Arnold, J.D., and Moritz, M.A., 2014, Large wildfire trends in the western United States, 1984–2011: *Geophysical Research Letters*, v. 41, no. 8, p. 2928–2933, accessed August 31, 2022, at <https://doi.org/10.1002/2014GL059576>.
- Derner, J.D., Detling, J.K., and Antolin, M.F., 2006, Are livestock weight gains affected by black-tailed prairie dogs?: *Frontiers in Ecology and the Environment*, v. 4, no. 9, p. 459–464, accessed August 31, 2022, at [https://doi.org/10.1890/1540-9295\(2006\)4\[459:ALWGAB\]2.0.CO;2](https://doi.org/10.1890/1540-9295(2006)4[459:ALWGAB]2.0.CO;2).
- Dinterman, R., and Katchova, A.L., 2019, Property tax incidence on cropland cash rent: *Applied Economics Perspectives and Policy*, v. 42, no. 4, p. 739–758, accessed August 31, 2022, at <https://doi.org/10.1093/acpp/ppz004>.
- Dobrowski, S.Z., Abatzoglou, J., Swanson, A.K., Greenberg, J.A., Mynsberge, A.R., Holden, Z.A., and Schwartz, M.K., 2013, The climate velocity of the contiguous United States during the 20th century: *Global Change Biology*, v. 19, no. 1, p. 241–251, accessed August 31, 2022, at <https://doi.org/10.1111/gcb.12026>.
- Doidge, M., Hennessy, D.A., and Feng, H., 2020, The role of economic returns in land use change—Evidence from farm-level data in the US Northern Great Plains: *Journal of Soil and Water Conservation*, v. 75, no. 5, p. 669–679, accessed August 31, 2022, at <https://doi.org/10.2489/jswc.2020.00084>.
- Donovan, V.M., Wonkka, C.L., and Twidwell, D., 2017, Surging wildfire activity in a grassland biome: *Geophysical Research Letters*, v. 44, no. 12, p. 5986–5993, accessed August 31, 2022, at <https://doi.org/10.1002/2017GL072901>.
- Douville, H., Raghavan, K., Renwick, J., Allan, R.P., Arias, P.A., Barlow, M., Cerezo-Mota, R., Cherchi, A., Gan, T.Y., Gergis, J., Jiang, D., Khan, A., Pokam Mba, W., Rosenfeld, D., Tierney, J., and Zolina, O., 2021, Water cycle changes, chap. 8 of Masson-Delmotte, V., Zhai, P., Pirani, P., Connors, S.L., Péan, C., Berger, S., Caud, N., and Chen, Y., Goldfarb, L., Gomis, M.I., Huang, M., Leitzell, K., Lonnoy, E., Matthews J.B.R., Maycock, T.K., Waterfield, T., Yelekçi, O., Yu, R., and Zhou, B., eds., *Climate change 2021—The physical science basis—Contribution of working group I to the sixth assessment report—Intergovernmental Panel on Climate Change*: Cambridge, United Kingdom, Cambridge University Press, 156 p., accessed August 31, 2022, at <https://www.ipcc.ch/report/ar6/wg1/chapter/chapter-8/>.
- Drum, R.G., Ribic, C.A., Koch, K., Lonsdorf, E., Grant, E., Ahlering, M., Barnhill, L., Dailey, T., Lor, S., Mueller, C., Pavlacky, D.C., Jr., Rideout, C., and Sample, D., 2015, Strategic grassland bird conservation throughout the annual cycle—Linking policy alternatives, landowner decisions, and biological population outcomes: *PLoS ONE*, v. 10, no. 11, 16 p., accessed August 31, 2022, at <https://doi.org/10.1371/journal.pone.0142525>.
- Drummond, M.A., Auch, R.F., Karstensen, K.A., Sayler, K.L., Taylor, J.L., and Loveland, T.R., 2012, Land change variability and human-environment dynamics in the United States Great Plains: *Land Use Policy*, v. 29, no. 3, p. 710–723, accessed August 31, 2022, at <https://digitalcommons.unl.edu/ugsstaffpub/915>.
- Dudley, R.W., Archfield, S.A., Hodgkins, G.A., Renard, B., and Ryberg, K.R., 2019, Peak-streamflow trends and change-points and basin characteristics for 2,683 U.S. Geological Survey streamgages in the conterminous U.S.: U.S. Geological Survey data release, accessed August 31, 2022, at <https://doi.org/10.5066/P9AEGXYO>.
- Dukes, J.S., 2001, Biodiversity and invasibility in grassland microcosms: *Oecologia*, v. 126, p. 563–568, accessed August 31, 2022, at <https://doi.org/10.1007/s004420000549>.
- Dumont, B., Andueza, D., Niderkorn, V., Lüscher, A., Porqueddu, C., and Picon-Cochard, C., 2015, A meta-analysis of climate change effects on forage quality in grasslands—Specificities of mountain and Mediterranean areas: *Grass and Forage Science*, v. 70, no. 2, p. 239–254, accessed August 31, 2022, at <https://doi.org/10.1111/gfs.12169>.
- Dyke, S., Johnson, S., and Isakson, P., 2015, North Dakota State wildlife action plan: Bismarck, N. Dak, North Dakota Game and Fish Department, 468 p., accessed August 31, 2022, at https://gf.nd.gov/sites/default/files/publications/swap-2015_0.pdf.
- Eads, D.A., and Biggins, D.E., 2015, Plague bacterium as a transformer species in prairie dogs and the grasslands of western North America: *Conservation Biology*, v. 29, no. 4, p. 1086–1093, accessed August 31, 2022, at <https://doi.org/10.1111/cobi.12498>.
- Easterling, D.R., Kunkel, K.E., Arnold, J.R., Knutson, T., LeGrande, A.N., Leung, L.R., Vose, R.S., Waliser, D.E., and Wehner, M.F., 2017, Precipitation change in the United States, chap. 7 of Wuebbles, D.J., Fahey, D.W., Hibbard, K.A., Dokken, D.J., Stewart, B.C., and Maycock, T.K., eds., *Climate science special report, v. 1 of Fourth national climate assessment*: Washington, D.C., U.S. Global Change Research Program, p. 207–230, accessed August 31, 2022, at <https://science2017.globalchange.gov/chapter/7/>.

- Emery, S.M., 2007, Limiting similarity between invaders and dominant species in herbaceous plant communities?: *Journal of Ecology*, v. 95, no. 5, p. 1027–1035, accessed August 31, 2022, at <https://doi.org/10.1111/j.1365-2745.2007.01274.x>.
- Energy Information Administration, 2022, Short-term energy outlook: U.S. Energy Information Administration, accessed March 4, 2022, at <https://www.eia.gov/outlooks/steo/archives/feb22.pdf>.
- Espeland, E.K., Schreeg, L., and Porensky, L.M., 2020, Managing risks related to climate variability in rangeland-based livestock production—What producer driven strategies are shared and prevalent across diverse dryland geographies?: *Environmental Management*, v. 255, accessed August 31, 2022, at <https://doi.org/10.1016/j.jenvman.2019.109889>.
- Ficke, A.D., Myrick, C.A., and Hansen, L.J., 2007, Potential impacts of global climate change on freshwater fisheries: *Reviews in Fish Biology and Fisheries*, v. 17, p. 581–613, accessed August 31, 2022, at <https://doi.org/10.1007/s11160-007-9059-5>.
- Ficklin, D.L., and Novick, K.A., 2017, Historic and projected changes in vapor pressure deficit suggest a continental-scale drying of the United States atmosphere: *Journal of Geophysical Research—Atmospheres*, v. 122, no. 4, p. 2061–2079, accessed August 31, 2022, at <https://doi.org/10.1002/2016JD025855>.
- Foresman, K.R., 2012, *Mammals of Montana: Missoula, Mont.*, Mountain Press Publishing Co., 429 p.
- Forrest, S.C., Strand, H., Haskins, W.H., Freese, C., Proctor, J., and Dinerstein, E., 2004, Ocean of grass—A conservation assessment for the Northern Great Plains: Northern Plains Conservation Network, Northern Great Plains Ecoregion, and World Wildlife Fund, 191 p., accessed October 29, 2021, at <https://paperzz.com/doc/8525183/ocean-of-grass--a-conservation-assessment-for-the-norther%E2%80%A6>.
- Fu, Z., Stoy, P.C., Luo, Y., Chen, J., Sun, J., Montagnani, L., Wohlfahrt, G., Rahman, A.F., Rambal, S., Bernhofer, C., Wang, J., Shirkey, G., and Niu, S., 2017, Climate controls over the net carbon uptake period and amplitude of net ecosystem production in temperate and boreal ecosystems: *Agricultural and Forest Meteorology*, v. 243, p. 9–18, accessed August 31, 2022, at <https://doi.org/10.1016/j.agrformet.2017.05.009>.
- Fuhlendorf, S.D., and Engle, D.M., 2001, Restoring heterogeneity on rangelands—Ecosystem management based on evolutionary grazing patterns: *BioScience*, v. 51, no. 8, p. 625–632, accessed August 31, 2022, at [https://doi.org/10.1641/0006-3568\(2001\)051\[0625:RHOREM\]2.0.CO;2](https://doi.org/10.1641/0006-3568(2001)051[0625:RHOREM]2.0.CO;2).
- Gao, P., Terando, A.J., Kupfer, J.A., Varner, J.M., Stambaugh, M.C., Lei, T.L., and Hiers, J.K., 2021, Robust projections of future fire probability for the conterminous United States: *Science of the Total Environment*, v. 789, 13 p., accessed August 31, 2022, at <https://doi.org/10.1016/j.scitotenv.2021.147872>.
- Garbrecht, J.D., Van Liew, M., and Brown, G.O., 2004, Trends in precipitation, streamflow, and evapotranspiration in the Great Plains of the United States: *Journal of Hydrologic Engineering*, v. 9, no. 5, p. 360–367, accessed August 31, 2022, at [https://doi.org/10.1061/\(ASCE\)1084-0699\(2004\)9:5\(360\)](https://doi.org/10.1061/(ASCE)1084-0699(2004)9:5(360)).
- George, T.L., Fowler, A.C., Knight, R.L., and McEwen, L.C., 1992, Impacts of a severe drought on grassland birds in western North Dakota: *Ecological Applications*, v. 2, no. 3, p. 275–284, accessed August 31, 2022, at <https://doi.org/10.2307/1941861>.
- Gherardi, L.A., and Sala, O.E., 2015, Enhanced precipitation variability decreases grass- and increases shrub-productivity: *Proceedings of the National Academy of Sciences of the United States of America*, v. 112, no. 41, p. 12735–12740, accessed August 31, 2022, at <https://doi.org/10.1073/pnas.1506433112>.
- Goldstein, J.H., Presnall, C.K., López-Hoffman, L., Nabhan, G.P., Knight, R.L., Ruyle, G.B., and Toombs, T.P., 2011, Beef and beyond—Paying for ecosystem services on Western U.S. rangelands: *Rangelands*, v. 33, no. 5, 12 p., accessed August 31, 2022, at <https://doi.org/10.2111/1551-501X-33.5.4>.
- Harmoney, K.R., 2007, Grazing and burning Japanese brome (*Bromus japonicus*) on mixed grass rangelands: *Rangeland Ecology and Management*, v. 60, no. 5, p. 479–486, accessed August 31, 2022, at [https://doi.org/10.2111/1551-5028\(2007\)60\[479:GABJBB\]2.0.CO;2](https://doi.org/10.2111/1551-5028(2007)60[479:GABJBB]2.0.CO;2).
- Hayhoe, K., Edmonds, J., Kopp, R.E., LeGrande, A.N., Sanderson, B.M., Wehner, M.F., and Wuebbles, D.J., 2017, Climate models, scenarios, and projections, chap. 4 of Wuebbles, D.J., Fahey, D.W., Hibbard, K.A., Dokken, D.J., Stewart, B.C., and Maycock, T.K. eds., *Climate science special report*, v. 1 of Fourth national climate assessment: Washington, D.C., U.S. Global Change Research Program, p. 133–160, accessed August 31, 2022, at <http://doi.org/10.7930/J0WH2N54>.
- Hise, C., Obermeyer, B., Ahlering, M., Wilkinson, J., and Fargione, J., 2022, Site wind right—Identifying low-impact wind development areas in the central United States: *Land (Basel)*, v. 11, no. 4, p. 462–487, accessed August 31, 2022, at <https://doi.org/10.3390/land11040462>.

- Hoekstra, J.M., Boucher, T.M., Ricketts, T.H., and Roberts, C., 2005, Confronting a biome crisis—Global disparities of habitat loss and protection: *Ecology Letters*, v. 8, no. 1, p. 23–29, accessed August 31, 2022, at <https://doi.org/10.1111/j.1461-0248.2004.00686.x>.
- Hoen, B.D., Diffendorfer, J.E., Rand, J.T., Kramer, L.A., Garrity, C.P., and Hunt, H.E., 2018, United States wind turbine database (ver. 5.0, April 2022): U.S. Geological Survey, American Clean Power Association, and Lawrence Berkeley National Laboratory data release, accessed August 31, 2022, at <https://doi.org/10.5066/F7TX3DN0>.
- Hoogland, J.L., 2006, Conservation of the black-tailed prairie dog—Saving North America’s western grasslands: Washington, D.C., Island Press, 342 p.
- Hoover, D.L., Knapp, A.K., and Smith, M.D., 2014a, Contrasting sensitivities of two dominant *C₄* grasses to heat waves and drought: *Plant Ecology*, v. 215, p. 721–731, accessed August 31, 2022, at <https://www.jstor.org/stable/24553760>.
- Hoover, D.L., Knapp, A.K., and Smith, M.D., 2014b, Resistance and resilience of a grassland ecosystem to climate extremes: *Ecology*, v. 95, no. 9, p. 2646–2656, accessed August 31, 2022, at <https://doi.org/10.1890/13-2186.1>.
- Hoover, D.L., Koriakin, K., Albrigtsen, J., and Ocheltree, T., 2019, Comparing water-related plant functional traits among dominant grasses of the Colorado Plateau—Implications for drought resistance: *Plant and Soil*, v. 441, p. 207–218, accessed August 31, 2022, at <https://doi.org/10.1007/s11104-019-04107-9>.
- Hoover, D.L., Duniway, M.C., and Belnap, J., 2017, Testing the apparent resistance of three dominant plants to chronic drought on the Colorado Plateau: *Journal of Ecology*, v. 105, no. 1, p. 152–162, accessed August 31, 2022, at <https://doi.org/10.1111/1365-2745.12647>.
- Hoover, D.L., Pfennigwerth, A.A., and Duniway, M.C., 2021, Drought resistance and resilience—The role of soil moisture–plant interactions and legacies in a dryland ecosystem: *Journal of Ecology*, v. 109, no. 9, p. 3280–3294, accessed August 31, 2022, at <https://doi.org/10.1111/1365-2745.13681>.
- Hoy, S.R., Vucetich, L.M., Peterson, R.O., and Vucetich, J.A., 2021, Winter tick burdens for moose are positively associated with warmer summers and higher predation rates: *Frontiers in Ecology and Evolution*, v. 9, 12 p., accessed August 31, 2022, at <https://doi.org/10.3389/fevo.2021.758374>.
- Hsiang, S., Kopp, R., Jina, A., Rising, J., Delgado, M., Mohan, S., Rasmussen, D.J., Muir-Wood, R., Wilson, P., Oppenheimer, M., Larsen, K., and Houser, T., 2017, Estimating economic damage from climate change in the United States: *Science*, v. 356, no. 6345, p. 1362–1369, accessed August 31, 2022, at <https://doi.org/10.1126/science.aal4369>.
- Hufkens, K., Keenan, T.F., Flanagan, L.B., Scott, R.L., Bernacchi, C.J., Joo, E., Brunsell, N.A., Verfaillie, J., and Richardson, A.D., 2016, Productivity of North American grasslands is increased under future climate scenarios despite rising aridity: *Nature Climate Change*, v. 6, p. 710–714, accessed August 31, 2022, at <https://doi.org/10.1038/nclimate2942>.
- Intergovernmental Panel on Climate Change, 2019, Summary for policymakers, in Shukla, P.R., Skea, J., Calvo Buendia, E., Masson-Delmotte, V., Pörtner, H.-O., Roberts, D.C., Zhai, P., Slade, R., Connors, S., van Diemen, R., Ferrat, M., Haughey, E., Luz, S., Neogi, S., Pathak, M., Petzold, J., Portugal Pereira, J., Vyas, P., Huntley, E., Kissick, K., Velkacemi, M., Malley, J., eds., *Climate change and land—An IPCC special report on climate change, desertification, land degradation, sustainable land management, food security, and greenhouse gas fluxes in terrestrial ecosystems*: Cambridge University Press, p. 1–36, accessed August 31, 2022, at <https://doi.org/10.1017/9781009157988.001>.
- Jaeger, K.L., Olden, J.D., and Pelland, N.A., 2014, Climate change poised to threaten hydrologic connectivity and endemic fishes in dryland streams: *Proceedings of the National Academy of Sciences of the United States of America*, v. 111, no. 38, p. 13894–13899, accessed August 31, 2022, at <https://doi.org/10.1073/pnas.1320890111>.
- Jarzyna, M.A., Zuckerberg, B., Finley, A.O., and Porter, W.F., 2016, Synergistic effects of climate and land cover—Grassland birds are more vulnerable to climate change: *Landscape Ecology*, v. 31, p. 2275–2290, accessed August 31, 2022, at <https://doi.org/10.1007/s10980-016-0399-1>.
- Jordan, N.R., Larson, D.L., and Huerd, S.C., 2008, Soil modification by invasive plants—Effects on native and invasive species of mixed-grass prairies: *Biological Invasions*, v. 10, p. 177–190, accessed August 31, 2022, at <https://doi.org/10.1007/s10530-007-9121-1>.
- Keuler, K.M., Bron, G.M., Griebel, R., and Richgels, K.L.D., 2020, An invasive disease, sylvatic plague, increases fragmentation of black-tailed prairie dog (*Cynomys ludovicianus*) colonies: *PLoS ONE*, v. 16, no. 12, article e0235907, 15 p., accessed August 31, 2022, at <https://doi.org/10.1371/journal.pone.0235907>.

- Kleiber, M., 1947, Body size and metabolic rate: Physiological Reviews, v. 27, no. 4, p. 511–541, accessed August 31, 2022, at <https://doi.org/10.1152/physrev.1947.27.4.511>.
- Klemm, T., and Briske, D.D., 2021, Retrospective assessment of beef cow numbers to climate variability throughout the U.S. Great Plains: Rangeland Ecology and Management, v. 78, p. 273–280, accessed August 31, 2022, at <https://doi.org/10.1016/j.rama.2019.07.004>.
- Klemm, T., Briske, D.D., and Reeves, M.C., 2020a, Potential natural vegetation and NPP responses to future climates in the U.S. Great Plains: Ecosphere, v. 11, no. 10, 17 p., accessed August 31, 2022, at <https://doi.org/10.1002/ecs2.3264>.
- Klemm, T., Briske, D.D., and Reeves, M.C., 2020b, Vulnerability of rangeland beef cattle production to climate-induced NPP fluctuations in the U.S. Great Plains: Global Change Biology, v. 26, no. 9, p. 4841–4853, accessed August 31, 2022, at <https://doi.org/10.1111/gcb.15202>.
- Kloesel, K., Bartush, B., Banner, J., Brown, D., Hayhoe, K., Lemory, J., Lin, X., McManus, G., Mullens, E., Nielsen-Gammon, J., Shafer, M., Sorenson, C., Sperry, S., Wildcat, D., and Ziolkowska, J., 2018, Southern great plains, chap 23 of Reidmiller, D.R., Avery, C.W., Easterling, D.R., Kunkel, K., Lewis, K.L.M., Maycock, T.K., and Stewart, B.C., eds., Impacts, risks, and adaptation in the United States, v. 2 of Fourth national climate assessment: Washington, D.C., U.S. Global Change Research Program, accessed August 31, 2022, at <https://doi.org/10.7930/NCA4.2018.CH23>.
- Klug, P.E., Jackrel, S.L., and With, K.A., 2010, Linking snake habitat use to nest predation risk in grassland birds—The dangers of shrub cover: Oecologia, v. 162, no. 3, p. 803–813, accessed August 31, 2022, at <https://doi.org/10.1007/s00442-009-1549-9>.
- Knapp, A.K., Chen, A., Griffin-Nolan, R.J., Baur, L.E., Carroll, C.J.W., Gray, J.E., Hoffman, A.M., Li, X., Post, A.K., Slette, I.J., Collins, S.L., Luo, Y., and Smith, M.D., 2020, Resolving the Dust Bowl paradox of grassland responses to extreme drought: Proceedings of the National Academy of Sciences of the United States of America, v. 117, no. 36, p. 22249–22255, accessed August 31, 2022, at <https://doi.org/10.1073/pnas.1922030117>.
- Knopf, F.L., 1996, Prairie legacies—Birds, chap. 10 of Samson, F.B., and Knopf, F.L., eds., Prairie conservation—Preserving North America’s most endangered ecosystem: Washington, D.C., Island Press, p. 135–148.
- Knopf, F.L., and Samson, F.B., eds., 1997, Ecology and conservation of Great Plains vertebrates: New York, Springer-Verlag, Ecological Studies, v.125, 323 p.
- Kobiela, B., Quast, J., Dixon, C., and DeKeyser, E.S., 2017, Targeting introduced species to improve plant community composition on USFWS-managed prairie remnants: Natural Areas Journal, v. 37, no. 2, p. 150–160, accessed August 31, 2022, at <https://doi.org/10.3375/043.037.0204>.
- Koebrich, S., Bowen, T., and Sharpe, A., 2018, 2018 renewable energy data book: U.S. Department of Energy, Office of Energy Efficiency and Renewable Energy, accessed March 4, 2022, at <https://www.nrel.gov/docs/fy20osti/75284.pdf>.
- Kral, K., Limb, R., Ganguli, A., Hovick, T., and Sedivec, K., 2018, Seasonal prescribed fire variation decreases inhibitory ability of *Poa pratensis* L. and promotes native plant diversity: Journal of Environmental Management, v. 223, p. 908–916, accessed August 31, 2022, at <https://doi.org/10.1016/j.jenvman.2018.06.096>.
- Kral-O’Brien, K.C., Limb, R.F., Hovick, T.J., and Harmon, J.P., 2019, Compositional shifts in forb and butterfly communities associated with Kentucky bluegrass invasions: Rangeland Ecology and Management, v. 72, no. 2, p. 301–309, accessed August 31, 2022, at <https://doi.org/10.1016/j.rama.2018.10.003>.
- Kulmatiski, A., and Beard, K.H., 2013, Woody plant encroachment facilitated by increased precipitation intensity: Nature Climate Change, v. 3, p. 833–837, accessed August 31, 2022, at <https://doi.org/10.1016/j.rama.2018.10.003>.
- Kunkel, K.E., Stevens, L.E., Stevens, S.E., Sun, L., Janssen, E., Wuebbles, D., Kruk, M.C., Thomas, D.P., Shulski, M., Umphlett, N., Hubbard, K., Robbins, K., Romolo, L., Akyiz, A., Pathak, T., Bergantino, T., and Dobson, J.G., 2013, Regional climate trends and scenarios for the U.S. National Climate Assessment, pt. 4 of Climate of the U.S. Great Plains (NOAA Technical Report NESDIS 142–4): Washington, D.C., National Oceanic and Atmospheric Administration, National Environmental Satellite, Data and Information Service, 91 p., accessed August 31, 2022, at <https://scenarios.globalchange.gov/report/regional-climate-trends-and-scenarios-us-national-climate-assessment-part-4-climate-us-great>.
- Lark, T.J., 2020, Protecting our prairies—Research and policy actions for conserving America’s grasslands: Land Use Policy, v. 97, 7 p., accessed August 31, 2022, at <https://doi.org/10.1016/j.landusepol.2020.104727>.
- Lupo, C.D., Clay, D.E., Benning, J.L., and Stone, J.J., 2013, Lifecycle assessment of the beef cattle production system for the northern Great Plains, USA: Journal of Environmental Quality, v. 42, no. 5, p. 1386–1394, accessed August 31, 2022, at <https://doi.org/10.2134/jeq2013.03.0101>.

- Maher, A.T., Quintana Ashwell, N.E., Maczko, K.A., Taylor, D.T., Tanaka, J.A., Reeves, M.C., 2021, An economic valuation of Federal and private grazing land ecosystem services supported by beef cattle ranching in the United States: *Translational Animal Science*, v. 5, no. 3, 15 p., accessed August 31, 2022, at <https://doi.org/10.1093/tas/txab054>.
- Mankin, J.S., Smerdon, J.E., Cook, B.I., Williams, A.P., and Seager, R., 2017, The curious case of projected twenty-first-century drying but greening in the American West: *Journal of Climate*, v. 30, no. 2, p. 8689–8710, accessed August 31, 2022, at <https://doi.org/10.1175/JCLI-D-17-0213.1>.
- Marra, P.P., Griffing, S., Caffrey, C., Kilpatrick, M.A., McLean, R., Brand, C., Saito, E., Dupuis, A.P., Kramer, L., Novak, R., 2004, West Nile virus and wildlife: *BioScience*, v. 54, no. 5, p. 393–402, accessed August 31, 2022, at [https://doi.org/10.1641/0006-3568\(2004\)054\[0393:WNV AW\]2.0.CO;2](https://doi.org/10.1641/0006-3568(2004)054[0393:WNV AW]2.0.CO;2).
- Martin, J.M., and Barboza, P.S., 2020a, Decadal heat and drought drive body size of North American bison (*Bison bison*) along the Great Plains: *Ecology and Evolution*, v. 10, no. 1, p. 336–349, accessed August 31, 2022, at <https://doi.org/10.1002/ece3.5898>.
- Martin, J.M., and Barboza, P.S., 2020b, Thermal biology and growth of bison (*Bison bison*) along the Great Plains—Examining four theories of endotherm body size: *Ecosphere*, v. 11, no. 7, 13 p., accessed August 31, 2022, at <https://doi.org/10.1002/ecs2.3176>.
- Martin, J.M., Mead, J.I., and Barboza, P.S., 2018, Bison body size and climate change: *Ecology and Evolution*, v. 8, no. 9, p. 4564–4574, accessed August 31, 2022, at <https://doi.org/10.1002/ece3.4019>.
- Martin, J.M., Zarestky, J., Briske, D.D., and Barboza, P.S., 2021, Vulnerability assessment of the multi-sector North American bison *Bison bison* management system to climate change: *People and Nature*, v. 3, no. 3, p. 711–722, accessed August 31, 2022, at <https://doi.org/10.1002/pan3.10209>.
- McGowan, M.M., Perlut, N.G., and Strong, A.M., 2021, Agriculture is adapting to phenological shifts caused by climate change, but grassland songbirds are not: *Ecology and Evolution*, v. 11, no. 11, p. 6993–7002, accessed August 31, 2022, at <https://doi.org/10.1002/ece3.7548>.
- McKenna, O.P., Kucia, S.R., Mushet, D.M., Anteau, M.J., and Wiltermuth, M.T., 2019, Synergistic interaction of climate and land-use drivers alter the function of North American, prairie-pothole wetlands: *Sustainability*, v. 11, no. 23, 20 p., accessed August 31, 2022, at <https://doi.org/10.3390/sul1236581>.
- McLachlan, J.S., Hellmann, J.J., and Schwartz, M.W., 2007, A framework for debate of assisted migration in an era of climate change: *Conservation Biology*, v. 21, no. 2, p. 297–302, accessed August 31, 2022, at <https://doi.org/10.1111/j.1523-1739.2007.00676.x>.
- Miller, B.J., Reading, R.P., Biggins, D.E., Detling, J.K., Forrest, S.C., Hoogland, J.L., Javersak, J., Miller, S.D., Proctor, J., Truett, J., and Uresk, D.W., 2007, Prairie dogs—An ecological review and current biopolitics: *The Journal of Wildlife Management*, v. 71, no. 8, p. 2801–2810, accessed August 31, 2022, at <https://www.jstor.org/stable/4496405>.
- Miller, C.F., 2013, The evolving understanding of grassland restoration seeding protocols: *Ecological Restoration*, v. 31, no. 1, p. 127–129, accessed August 31, 2022, at <https://www.jstor.org/stable/43441547>.
- Miller Hesel, C.D., and Yocum, H.M., 2023, Grassland management priorities for the North Central Region: U.S. Geological Survey Open-File Report 2023–1037, <https://doi.org/10.3133/ofr20231037>.
- Montana Fish, Wildlife and Parks, 2015, Montana’s State wildlife action plan: Helena, Mont., Montana Fish, Wildlife and Parks, 441 p., accessed August 31, 2022, at <https://myfwp.mt.gov/getRepositoryFile?objectID=70168>.
- Morgan, J.A., LeCain, D.R., Pendall, E., Blumenthal, D.M., Kimball, B.A., Carrillo, Y., Williams, D.G., Heisler-White, J., Dijkstra, F.A., and West, M., 2011, C₄ grasses prosper as carbon dioxide eliminates desiccation in warmed semi-arid grassland: *Nature*, v. 476, p. 202–206, accessed August 31, 2022, at <https://doi.org/10.1038/nature10274>.
- Morgan, J.A., LeCain, D.R., Read, J.J., Hunt, H.W., and Knight, W.G., 1998, Photosynthetic pathway and ontogeny affect water relations and the impact of CO₂ on *Bouteloua gracilis* (C₄) and *Pascopyrum smithii* (C₃): *Oecologia*, v. 114, no. 4, p. 483–493, accessed August 31, 2022, at <https://doi.org/10.1007/s004420050472>.
- Moser, B.R., 2010, Camelina (*Camelina sativa* L.) oil as a bio-fuels feedstock—Golden opportunity or false hope?: *Lipid Technology*, v. 22, no. 12, p. 270–273, accessed August 31, 2022, at <https://doi.org/10.1002/lite.201000068>.
- Mrad, A., Katul, G.G., Levia, D.F., Guswa, A.J., Boyer, E.W., Bruen, M., Carlyle-Moses, D.E., Coyte, R., Creed, I.F., van de Giesen, N., Grasso, D., Hannah, D.M., Hudson, J.E., Humphrey, V., Iida, S., Jackson, R.B., Kumagai, T., Llorens, P., Michalzik, B., Nanko, K., Peters, C.A., Selker, J.S., Tetzlaff, D., Zalewski, M., Scanlon, B.R., 2020, Peak grain forecasts for the U.S. High Plains amid withering waters: *Proceedings of the National Academy of Sciences of the United States of America*, v. 117, no. 42, p. 26145–26150, accessed August 31, 2022, at <https://doi.org/10.1073/pnas.2008383117>.

- Mueller, K.E., Blumenthal, D.M., Pendall, E., Carrillo, Y., Dijkstra, F.A., Williams, D.G., Follett, R.F., and Morgan, J.A., 2016, Impacts of warming and elevated CO₂ on a semi-arid grassland are non-additive, shift with precipitation, and reverse over time: *Ecology Letters*, v. 19, no. 8, p. 956–966, accessed August 31, 2022, at <https://doi.org/10.1111/ele.12634>.
- Mueller, J.M., and Hellmann, J.J., 2008, An assessment of invasion risk from assisted migration: *Conservation Biology*, v. 22, no. 3, p. 562–567, accessed August 31, 2022, at <https://doi.org/10.1111/j.1523-1739.2008.00952.x>.
- Mufson, S., Mooney, C., Eilperin, J., and Muyskens, J., 2019, 2°C beyond the limit—Extreme climate change has arrived in America: *Washington Post*, accessed August 31, 2022, at <https://www.washingtonpost.com/graphics/2019/national/climate-environment/climate-change-america/>.
- National Academies of Sciences, Engineering, and Medicine; Division of Behavioral and Social Sciences and Education; Division on Earth and Life Studies; Board on Environmental Change and Society; Board on Atmospheric Sciences and Climate; Committee to Advise the U.S. Global Change Research Program, 2021, *Global change research needs and opportunities for 2022–2031*: National Academies Press, 122 p., accessed August 31, 2022, at <https://doi.org/10.17226/26055>.
- Niraula, R., Meixner, T., Dominguez, F., Bhattarai, N., Rodell, M., Ajami, H., Gochis, D., and Castro, C., 2017, How might recharge change under projected climate change in the western US?: *Geophysical Research Letters*, v. 44, no. 20, p. 10407–10418, accessed August 31, 2022, at <https://doi.org/10.1002/2017GL075421>.
- Nixon, A., Fisher, R., Stralberg, D., Bayne, E., and Farr, D., 2016, Projected responses of North American grassland songbirds to climate change and habitat availability at their northern range limits in Alberta, Canada: *Avian Conservation and Ecology*, v. 11, no. 2, 39 p., accessed August 31, 2022, at <http://dx.doi.org/10.5751/ACE-00866-110202>.
- Norton, P.A., Anderson, M.T., and Stamm, J.F., 2014, Trends in annual, seasonal, and monthly streamflow characteristics at 227 streamgages in the Missouri River watershed, water years 1960–2011: U.S. Geological Survey Scientific Investigations Report 2014–5052, 128 p., accessed August 31, 2022, at <https://doi.org/10.3133/sir20145053>.
- O'Connor, R.C., Taylor, J.H., and Nippert, J.B., 2020, Browsing and fire decreases dominance of a resprouting shrub in woody encroached grassland: *Ecology*, v. 101, no. 2, 11 p., accessed August 31, 2022, at <https://doi.org/10.1002/ecy.2935>.
- Ohrtmann, M.K., Clay, S.A., Clay, D.E., and Smart, A.J., 2012, Fire as a tool for controlling *Tamarix* spp. seedlings: *Invasive Plant Science and Management*, v. 5, p. 139–147, accessed August 31, 2022, at <https://doi.org/10.1614/IPSM-D-11-00033.1>.
- Ojima, D.S., Conant, R.T., Parton, W.J., Lockett, J.M., and Even, T.L., 2021, Recent climate changes across the great plains and implications for natural resource management practices: *Rangeland Ecology and Management*, v. 78, p. 180–190, accessed August 31, 2022, at <https://doi.org/10.1016/j.rama.2021.03.008>.
- Ojima, D.S., and Lockett, J.M., and Central Great Plains Steering Committee and Assessment Team, 2002, *Preparing for a changing climate—The potential consequences of climate variability and change—Central Great Plains*: Colorado State University, Report for the U.S. Global Change Research Program, 103 p., accessed August 31, 2022, at https://www2.nrel.colostate.edu/projects/gpa/gpa_report.pdf.
- Ott, J.P., Hanberry, B.B., Khalil, M., Paschke, M.W., Post van der Burg, M., and Prenni, A.J., 2021, Energy development and production in the Great Plains—Implications and mitigation opportunities: *Rangeland Ecology and Management*, v. 78, p. 257–272, accessed August 31, 2022, at <https://doi.org/10.1016/j.rama.2020.05.003>.
- Pejchar, L., Medrano, L., Niemiec, R.M., Barfield, J.P., Davidson, A., and Hartway, C., 2021, Challenges and opportunities for cross-jurisdictional bison conservation in North America: *Biological Conservation*, v. 256, 6 p., accessed August 31, 2022, at <https://doi.org/10.1016/j.biocon.2021.109029>.
- Pendergrass, A.G., Meehl, G.A., Pulwarty, R., Hobbins, M., Hoell, A., AghaKouchak, A., Bonfils, C.J., Gallant, A.J., Hoerling, M., Hoffmann, D., Kaatz, L., Lehner, F., Llewellyn, D., Mote, P., Neale, R.B., Overpeck, J.T., Sheffield, A., Stahl, K., Svoboda, M., Wheeler, M.C., Wood, A.W., and Woodhouse, C.A., 2020, Flash droughts present a new challenge for subseasonal-to-seasonal prediction: *Nature Climate Change*, v. 10, no. 3, p. 191–199, accessed August 31, 2022, at <https://doi.org/10.1038/s41558-020-0709-0>.
- Perkins, L.B., Ahlring, M., and Larson, D.L., 2019, Looking to the future—Key points for sustainable management of Northern Great Plains grasslands: *Restoration Ecology*, v. 27, no. 6, p. 1212–1219, accessed August 31, 2022, at <https://doi.org/10.1111/rec.13050>.
- Perkins, L.B., and Nowak, R.S., 2013, Native and non-native grasses generate common types of plant-soil feedbacks by altering soil nutrients and microbial communities: *Oikos*, v. 122, no. 2, p. 199–208, accessed August 31, 2022, at <https://doi.org/10.1111/j.1600-0706.2012.20592.x>.

- Peters, R.H., 1983, *The ecological implications of body size*: Cambridge, United Kingdom, Cambridge University Press, 341 p.
- Pittman, J., and Ayambire, R., 2022, The social fit of conservation policy on working landscapes: SSRN, preprint posted March 1, 2022, 17 p., accessed August 31, 2022, at <https://doi.org/10.2139/SSRN.4046402>.
- Polley, H.W., Briske, D.D., Morgan, J.A., Wolter, K., Bailey, D.W., and Brown, J.R., 2013, Climate change and North American rangelands—Trends, projections, and implications: *Rangeland Ecology and Management*, v. 66, no. 5, p. 493–511, accessed August 31, 2022, at <https://doi.org/10.2111/REM-D-12-00068.1>.
- Poole, A., Stettenheim, P., and Gill, F., 1992, *The birds of North America—Life histories for the 21st century*: Washington, D.C., Academy of Natural Sciences of Philadelphia and the American Ornithologists' Union, 1024 p.
- Porensky, L.M., and Blumenthal, D.M., 2016, Historical wildfires do not promote cheatgrass invasion in a western Great Plains steppe: *Biological Invasions*, v. 18, p. 3333–3349, accessed August 31, 2022, at <https://doi.org/10.1007/s10530-016-1225-z>.
- Qiao, L., Pan, Z., Herrmann, R.B., and Hong, Y., 2014, Hydrological variability and uncertainty of lower Missouri River basin under changing climate: *Journal of the American Water Resources Association*, v. 50, no. 1, p. 246–260, accessed August 31, 2022, at <https://doi.org/10.1111/jawr.12126>.
- Ratajczak, Z., Nippert, J.B., Briggs, J.M., and Blair, J.M., 2014, Fire dynamics distinguish grasslands, shrublands and woodlands as alternative attractors in the Central Great Plains of North America: *Journal of Ecology*, v. 102, no. 6, p. 1374–1385, accessed August 31, 2022, at <https://doi.org/10.1111/1365-2745.12311>.
- Reeves, M.C., Krebs, M., Leinwand, I., Theobald, D.M., and Mitchell, J.E., 2018, *Rangelands on the edge—Quantifying the modification, fragmentation, and future residential development of U.S. rangelands*: U.S. Department of Agriculture Forest Service, Rocky Mountain Research Station, General technical report RMRS–GTR–382, 37 p., accessed August 31, 2022, at <https://doi.org/10.2737/RMRS-GTR-382>.
- Reeves, M.C., Moreno, A.L., Bagne, K.E., and Running, S.W., 2014, Estimating climate change effects on net primary production of rangelands in the United States: *Climatic Change*, v. 126, p. 429–442, accessed August 31, 2022, at <https://doi.org/10.1007/s10584-014-1235-8>.
- Reich, P.B., Hobbie, S.E., Lee, T.D., and Pastore, M.A., 2018, Unexpected reversal of C₃ versus C₄ grass response to elevated CO₂ during a 20-year field experiment: *Science*, v. 360, no. 6386, p. 317–320, accessed August 31, 2022, at <https://doi.org/10.1126/science.aas9313>.
- Reiter, P., 2001, Climate change and mosquito-borne disease: *Environmental Health Perspectives*, v. 109, p. 141–61, accessed March 29, 2023 at <https://doi.org/10.2307/3434853>.
- Ribic, C.A., 2015b, *Grassland birds and unconventional oil development in western North Dakota: Plains and Prairie Potholes Landscape Conservation Cooperative*, 22 p., accessed December 10, 2021, at <https://www.sciencebase.gov/catalog/item/5a04c22be4b0dc0b45b50858>.
- Richter, F., Jan, P., el Benni, N., Lüscher, A., Buchmann, N., and Klaus, V.H., 2021, A guide to assess and value ecosystem services of grasslands: *Ecosystem Services*, v. 52, p. 101376, accessed August 31, 2022, at <https://doi.org/10.1016/j.ecoser.2021.101376>.
- Riley, T.Z., Bayne, E.M., Dale, B.C., Naugle, D.E., Rodgers, J.A., and Torbit, S.C., 2012, Impacts of crude oil and natural gas developments on wildlife and wildlife habitat in the Rocky Mountain Region: *The Wildlife Society Technical Review*, 12–02, 45 p., accessed August 31, 2022, at https://wildlife.org/wp-content/uploads/2014/05/Oil-and-Gas-Technical-Review_2012.pdf.
- Rising, J., and Devineni, N., 2020, Crop switching reduces agricultural losses from climate change in the United States by half under RCP 8.5: *Nature Communications*, v. 11, p. 1–7, accessed August 31, 2022, at <https://doi.org/10.1038/s41467-020-18725-w>.
- Rocca, M.E., Brown, P.M., MacDonald, L.H., and Carrico, C.M., 2014, Climate change impacts on fire regimes and key ecosystem services in Rocky Mountain forests: *Forest Ecology and Management*, v. 327, p. 290–305, accessed August 31, 2022, at <https://doi.org/10.1016/j.foreco.2014.04.005>.
- Rodgers, J.A., and Koper, N., 2017, Shallow gas development and grassland songbirds—The importance of perches: *The Journal of Wildlife Management*, v. 81, no. 3, p. 406–416, accessed August 31, 2022, at <https://doi.org/10.1002/jwmg.21210>.
- Rohweder, M.R., 2015, *Kansas wildlife action plan*: Ecological Services Section, Kansas Department of Wildlife and Parks in cooperation with the Kansas Biological Survey, 183 p., accessed August 31, 2022, at <https://ksoutdoors.com/Services/Kansas-SWAP>.

- Rosenberg, K.V., Dokter, A.M., Blancher, P.J., Sauer, J.R., Smith, A.C., Smith, P.A., Stanton, J.C., Panjabi, A., Helft, L., Parr, M., and Marra, P.P., 2019, Decline of the North American avifauna: *Science*, v. 366, no. 6461, p. 120–124, accessed August 31, 2022, at <https://doi.org/10.1126/science.aaw1313>.
- Rottler, C.M., Burke, I.C., Palmquist, K.A., Bradford, J.B., and Lauenroth, W.K., 2018, Current reclamation practices after oil and gas development do not speed up succession or plant community recovery in big sagebrush ecosystems in Wyoming: *Restoration Ecology*, v. 26, no. 1, p. 114–123, accessed August 31, 2022, at <https://doi.org/10.1111/rec.12543>.
- Ryan, M.R., Burger, L.W., and Kurzejeski, E.W., 1998, The impact of CRP on avian wildlife—A review: *Journal of Production Agriculture*, v. 11, no. 1, p. 61–66, accessed August 31, 2022, at <https://doi.org/10.2134/jpa1998.0061>.
- Samson, F.B., and Knopf, F.L., eds., 1996, *Prairie conservation—Preserving North America’s most endangered ecosystem*: Washington, D.C., Island Press, 351 p.
- Samson, F.B., Knopf, F.L., and Ostlie, W.R., 2004, Great Plains ecosystems—Past, present, and future: *Wildlife Society Bulletin*, v. 32, no. 1, p. 6–15, accessed August 31, 2022, at [https://doi.org/10.2193/0091-7648\(2004\)32\[6:GPEP PA\]2.0.CO;2](https://doi.org/10.2193/0091-7648(2004)32[6:GPEP PA]2.0.CO;2).
- Sawyer, H., Korfanta, N.M., Nielson, R.M., Monteith, K.L., and Strickland, D., 2017, Mule deer and energy development—Long-term trends of habituation and abundance: *Global Change Biology*, v. 23, no. 11, p. 4521–4529, accessed August 31, 2022, at <https://doi.org/10.1111/gcb.13711>.
- Schlömer, S., and von Stechow, C., 2011, *Renewable energy sources and climate change mitigation—Special report of the Intergovernmental Panel on Climate Change*: Cambridge, United Kingdom, Cambridge University Press, 1088 p., accessed August 31, 2022, at <https://www.ipcc.ch/report/renewable-energy-sources-and-climate-change-mitigation/>.
- Schneider, R., Stoner, K., Steinauer, G., Panella, M., and Humpert, M., 2011, *The Nebraska natural legacy project—State wildlife action plan (2d ed.)*: Lincoln, Nebr., Nebraska Game and Parks Commission, accessed August 31, 2022, at <http://govdocs.nebraska.gov/epubs/G1000/B184-2011.pdf>.
- Schuurman, G.W., Cole, D.N., Cravens, A.E., Covington, S., Crausbay, S.D., Hoffman, C.H., Lawrence, D.J., Magness, D.R., Morton, J.M., Nelson, E.A., and O’Malley, R., 2021, Navigating ecological transformation—Resist—accept—direct as a path to a new resource management paradigm: *BioScience*, v. 72, no. 1, p. 16–29, accessed August 31, 2022, at <https://doi.org/10.1093/biosci/biab067>.
- Shaffer, J.A., and Buhl, D.A., 2016, Effects of wind-energy facilities on breeding grassland bird distributions: *Conservation Biology*, v. 30, no. 1, p. 59–71, accessed August 31, 2022, at <https://doi.org/10.1111/cobi.12569>.
- Shamon, H., Cosby, O.G., Andersen, C.L., Augare, H., Stiffarm, J.B., Bresnan, C.E., Brock, B.L., Carlson, E., Deichmann, J.L., Epps, A., Guernsey, N., Hartway, C., Jorgensen, D., Kipp, W., Kinsey, D., Komatsu, K.J., Kunkel, K., Magnan, R., Martin, J.M., Maxwell, B.D., McShea, W.J., Mormorunni, C., Olimb, S., Rattling Hawk, M., Ready, R., Smith, R., Songer, M., Speakthunder, B., Stafne, G., Weatherwax, M., and Akre, T.S., 2022, The potential of bison restoration as an ecological approach to future food sovereignty on the Northern Great Plains: *Frontiers in Ecology and Evolution*, accessed August 31, 2022, at <https://doi.org/10.3389/fevo.2022.826282>.
- Shortridge, B.G., 2003, A food geography of the Great Plains: *Geographical Review*, v. 93, no. 4, p. 507–529, accessed August 31, 2022, at <https://www.jstor.org/stable/30033940>.
- Sleeter, B., Loveland, T.R., Domke, G.M., Herold, N., Wickham, J., and Wood, N.J., 2018, Land cover and land use change, chap 5 of Reidmiller, D.R., Avery, C.W., Easterling, D.R., Kunkel, K., Lewis, K.L.M., Maycock, T.K., and Stewart, B.C., eds., *Impacts, risks, and adaptation in the United States*, v. 2 of Fourth national climate assessment: Washington, D.C., U.S. Global Change Research Program, accessed August 31, 2022, https://nca2018.globalchange.gov/downloads/NCA4_Ch05_LCLU_Full.pdf.
- Smith, M.D., and Knapp, A.K., 1999, Exotic plant species in a C₄-dominated grassland—Invasibility, disturbance, and community structure: *Oecologia*, v. 120, p. 605–612, accessed August 31, 2022, at <https://doi.org/10.1007/s004420050896>.
- Snäll, T., O’Hara, R.B., Ray, C., and Collinge, S.K., 2008, Climate-driven spatial dynamics of plague among prairie dog colonies: *The American Naturalist*, v. 171, no. 2, p. 238–248, accessed August 31, 2022, at <https://doi.org/10.1086/525051>.
- South Dakota Department of Game, Fish and Parks, 2014, *South Dakota wildlife action plan*: South Dakota Department of Game, Fish and Parks, accessed August 31, 2022, at <https://gfp.sd.gov/wildlife-action-plan/>.
- South Dakota’s Conservation Districts, 2022, *SD grasslands management project*: South Dakota’s Conservation Districts, accessed March 29, 2023, at https://www.sdconservation.org/index.asp?SEC=CFC76C00-EBCA-4E55-A4CC-2E9699C9F8F0&Type=B_PRGRSRV.

- Sovacool, B.K., Axsen, J., and Sorrell, S., 2018, Promoting novelty, rigor, and style in energy social science—Towards codes of practice for appropriate methods and research design: *Energy Research and Social Science*, v. 45, p. 12–42, accessed August 31, 2022, at <https://doi.org/10.1016/j.erss.2018.07.007>.
- Starns, H.D., Fuhlendorf, S.D., Elmore, R.D., Twidwell, D., Thacker, E.T., Hovick, T.J., and Luttbeg, B., 2019, Recoupling fire and grazing reduces wildland fuel loads on rangelands: *Ecosphere*, v. 10, no. 1, 15 p., accessed August 31, 2022, at <https://doi.org/10.1002/ecs2.2578>.
- Sullivan, S., 2009, Green capitalism and the cultural poverty of constructing nature as service provider: *Radical Anthropology*, v. 3, p. 18–27, accessed August 31, 2022, at https://eprints.bbk.ac.uk/id/eprint/6016/1/Sullivan_radical_anthropology_2009.pdf.
- Swanson, D.L., and Palmer, J.S., 2009, Spring migration phenology of birds in the Northern Prairie region is correlated with local climate change: *Journal of Field Ornithology*, v. 80, no. 4, p. 351–363, accessed August 31, 2022, at <https://www.jstor.org/stable/40983713>.
- Symstad, A.J., Buhl, D.A., and Swanson, D.J., 2021, Fire controls annual bromes in northern Great Plains grasslands—Up to a point: *Rangeland Ecology and Management*, v. 75, p. 17–28, accessed August 31, 2022, at <https://doi.org/10.1016/j.rama.2020.11.003>.
- Taylor, R.G., and Scanlon, B., Döll, P., Rodell, M., van Beek, R., Wada, Y., Longuevergne, L., Leblanc, M., Famiglietti, J.S., Edmunds, M., Konikow, L., Green, T.R., Chen, J., Taniguchi, M., Bierkens, M.F.P., MacDonald, A., Fan, Y., Maxwell, R.M., Yechieli, Y., Gurdak, J.J., Allen, D.M., Shamsudduha, M., Hiscock, K., Yeh, P.J.-F., Holman, I., and Treidel, H., 2013, Ground water and climate change: *Nature Climate Change*, v. 3, p. 322–329, accessed August 31, 2022, at <https://doi.org/10.1038/nclimate1744>.
- The Nature Conservancy [TNC], [undated], Site renewables right: The Nature Conservancy website, accessed on April 27, 2022, at <https://www.nature.org/en-us/what-we-do/our-priorities/tackle-climate-change/climate-change-stories/site-wind-right/>.
- Theobald, D.M., Gosnell, H., and Riebsame, W.E., 1996, Land use and landscape change in the Colorado mountains II—A case study of the east river valley: *Mountain Research and Development*, v. 16, no. 4, p. 407–418, accessed August 31, 2022, at <https://doi.org/10.2307/3673990>.
- Thompson, S.J., Johnson, D.H., Niemuth, N.D., and Ribic, C.A., 2015, Avoidance of unconventional oil wells and roads exacerbates habitat loss for grassland birds in the North American Great Plains: *Biological Conservation*, v. 192, p. 82–90, accessed August 31, 2022, at <https://doi.org/10.1016/j.biocon.2015.08.040>.
- Tollerud, H., Brown, J., Loveland, T., Mahmood, R., and Bliss, N., 2018, Drought and land-cover conditions in the Great Plains: *Earth Interactions*, v. 22, no. 17, 25 p., accessed August 31, 2022, at <https://doi.org/10.1175/EI-D-17-0025.1>.
- Travnicek, A.J., Lym, R.G., and Prosser, C., 2005, Fall-prescribed burn and spring-applied herbicide effects on Canada thistle control and soil seedbank in a northern mixed-grass prairie: *Rangeland Ecology and Management*, v. 58, no. 4, p. 413–422, accessed August 31, 2022, at [https://doi.org/10.2111/1551-5028\(2005\)058\[0413:FBASHE\]2.0.CO;2](https://doi.org/10.2111/1551-5028(2005)058[0413:FBASHE]2.0.CO;2).
- Trenberth, K.E., 2011, Changes in precipitation with climate change: *Climate Research*, v. 47, nos. 1–2, p. 123–138, accessed August 31, 2022, at <https://doi.org/10.3354/cr00953>.
- Triplehorn, C.A., Johnson, N.F., and Borror, D.J., 2005, Borror and DeLong's introduction to the study of insects, (7th ed.): Belmont, Calif., Thomson Brooks/Cole, 864 p.
- Tscharntke, T., Steffan-Dewenter, I., Kruess, A., and Thies, C., 2002, Contribution of small habitat fragments to conservation of insect communities of grassland–cropland landscapes: *Ecological Applications*, v. 12, no. 2, p. 354–363, accessed August 31, 2022, at <https://doi.org/10.2307/3060947>.
- U.S. Department of Agriculture, 2019, 2017 Census of agriculture—United States summary and State data: U.S. Department of Agriculture website, accessed March 12, 2021, at https://www.nass.usda.gov/Publications/AgCensus/2017/#full_report.
- U.S. Department of Energy, 2021, Solar futures study: U.S. Department of Energy, accessed October 7, 2021, at <https://www.energy.gov/eere/solar/solar-futures-study>.
- U.S. Geological Survey, 2022, The U.S. Wind Turbine Database: U.S. Geological Survey website accessed April 27, 2022, at <https://eerscmap.usgs.gov/uswtodb/>.
- van Ruijven, J., De Deyn, G.B., and Berendse, F., 2003, Diversity reduces invasibility in experimental plant communities—The role of plant species: *Ecology Letters*, v. 6, p. 910–918, accessed August 31, 2022, at <https://doi.org/10.1046/j.1461-0248.2003.00516.x>.
- van Vuuren, D.P., Sala, O.E., and Pereira, H.M., 2006, The future of vascular plant diversity under four global scenarios: *Ecology and Society*, v. 11, no. 2, 19 p., accessed August 31, 2022, at <http://www.ecologyandsociety.org/vol11/iss2/art25/>.
- Venne, L.S., Tsai, J.-S., Cox, S.B., Smith, L.M., and McMurry, S.T., 2012, Amphibian community richness in cropland and grassland playas in the Southern High Plains, USA: *Wetlands*, v. 32, no. 4, p. 619–629, accessed August 31, 2022, at <https://doi.org/10.1007/s13157-012-0305-9>.

- Vicente-Serrano, S.M., McVicar, T.R., Miralles, D.G., Yang, Y., and Tomas-Burguera, M., 2020, Unraveling the influence of atmospheric evaporative demand on drought and its response to climate change: *Wiley Interdisciplinary Reviews (WIREs) Climate Change*, v. 11, no. 2, article e632, 31 p., accessed August 31, 2022, at <https://doi.org/10.1002/wcc.632>.
- Visser, M.E., Holleman, L.J.M., and Gienapp, P., 2006, Shifts in caterpillar biomass phenology due to climate change and its impacts on the breeding biology of an insectivorous bird: *Oecologia*, v. 147, p. 164–172, accessed August 31, 2022, at <https://doi.org/10.1007/s00442-005-0299-6>.
- Vose, R.S., Easterling, D.R., Kunkel, K.E., LeGrande, A.N., and Wehner, M.F., 2017, Temperature changes in the United States, chap 6 of Wuebbles, D.J., Fahey, D.W., Hibbard, K.A., Dokken, D.J., Stewart, B.C., and Maycock, T.K., eds., *Climate science special report*, v. 1 of *Fourth national climate assessment: Washington, D.C., U.S. Global Change Research Program*, p. 185–206, accessed August 31, 2022, at <http://doi.org/10.7930/J0N29V45>.
- Whitfield, J.B., and Purcell, A.H., III, 2012, *Daly and Doyen's introduction to insect biology and diversity*, (3d ed.): New York, Oxford University Press, 736 p.
- Whitlock, C., Cross, W.F., Maxwell, B., Silverman, N., and Wade, A.A., 2017, 2017 Montana climate assessment: Bozeman and Missoula, Mont., Montana State University and University of Montana, Montana Institute on Ecosystems, 318 p., accessed August 31, 2022, at <http://montanaclimate.org/sites/default/files/thumbnails/image/2017-Montana-Climate-Assessment-Ir.pdf>.
- Whitney, J.E., Al-Chokhachy, R.K., Bunnell, D.B., Caldwell, C.A., Cooke, S.J., Eliason, E.J., Rogers, M.W., Lynch, A.J., and Paukert, C.P., 2016, Physiological basis of climate change impacts on North American inland fishes: *Fisheries Magazine*, v. 41, no. 7, p. 332–345, accessed August 31, 2022, at <https://doi.org/10.1080/03632415.2016.1186656>.
- Wick, A.F., Geaumont, B.A., Sedivec, K.K., and Hendrickson, J.R., 2016, Grassland degradation, chap. 11.2 of Shroder, J.F., and Sivanpillai, R., eds., *Biological and environmental hazards, risks, and disasters: Cambridge, Mass., Academic Press*, p. 257–276, accessed August 31, 2022, at <https://doi.org/10.1016/B978-0-12-394847-2.00016-4>.
- Wilmer, H., Augustine, D.J., Derner, J.D., Fernández-Giménez, M.E., Briske, D.D., Roche, L.M., Tate, K.W., and Miller, K.E., 2018, Diverse management strategies produce similar ecological outcomes on ranches in western great plains—Social-ecological assessment: *Rangeland Ecology and Management*, v. 71, p. 626–636, accessed August 31, 2022, at <https://doi.org/10.1016/j.rama.2017.08.001>.
- Winkler, D.E., Belnap, J., Hoover, D., Reed, S.C., and Duniway, M.C., 2019, Shrub persistence and increased grass mortality in response to drought in dryland systems: *Global Change Biology*, v. 25, no. 9, p. 3121–3135, accessed August 31, 2022, at <https://doi.org/10.1111/gcb.14667>.
- Wonkka, C.L., Twidwell, D., Allred, B.W., Bielski, C.H., Donovan, V.M., Roberts, C.P., and Fuhlendorf, S.D., 2019, Rangeland vulnerability to state transition under global climate change: *Climatic Change*, v. 153, p. 59–78, accessed August 31, 2022, at <https://doi.org/10.1007/s10584-018-02365-7>.
- World Wildlife Fund [WWF], 2020, 2020 plow print report: World Wildlife Fund, 4 p., accessed January 12, 2021, at <https://www.worldwildlife.org/publications/2020-plowprint-report>.
- World Wildlife Fund [WWF], 2021, 2021 plow print report: World Wildlife Fund, 4 p., accessed February 8, 2021, at <https://www.worldwildlife.org/publications/2021-plowprint-report>.
- Wu, W.-Y., Lo, M.-H., Wada, Y., Famiglietti, J.S., Reager, J.T., Yeh, P.J.-F., Ducharme, A., and Yang, Z.-L., 2020, Divergent effects of climate change on future groundwater availability in key mid-latitude aquifers: *Nature Communications*, v. 11, 9 p., accessed August 31, 2022, at <https://doi.org/10.1038/s41467-020-17581-y>.
- Wyoming Game and Fish Department, 2017, Wyoming State wildlife action plan: Wyoming Game and Fish Department, accessed August 31, 2022, at <https://wgfd.wyo.gov/Habitat/Habitat-Plans/Wyoming-State-Wildlife-Action-Plan>.
- Yuan, W., Zheng, Y., Piao, S., Ciais, P., Lombardozzi, D., Wang, Y., Ryu, Y., Chen, G., Dong, W., Hu, Z., Jain, A.K., Jiang, C., Kato, E., Li, S., Lienert, S., Liu, S., Nabel, J.E.M.S., Qin, Z., Quine, T., Sitch, S., Smith, W.K., Wang, F., Wu, C., Xiao, Z., and Yang, S., 2019, Increased atmospheric vapor pressure deficit reduces global vegetation growth: *Science Advances*, v. 5, no. 8, 12 p., accessed August 31, 2022, at <https://doi.org/10.1126/sciadv.aax1396>.
- Yurkonis, K.A., Dillon, J., McGranahan, D.A., Toledo, D., and Goodwin, B.J., 2019, Seasonality of prescribed fire weather windows and predicted fire behavior in the Northern Great Plains, USA: *Fire Ecology*, v. 15, 15 p., accessed August 31, 2022, at <https://doi.org/10.1186/s42408-019-0027-y>.
- Zamuda, C., Bilello, D.E., Connzelmann, G., Mecray, E., Satsangi, A., Tidwell, V., and Walker, B.J., 2018, Energy supply, delivery, and demand, chap 4 of Reidmiller, D.R., Avery, C.W., Easterling, D.R., Kunkel, K.E., Lewis, K.L.M., Maycock, T.K., and Stewart, B.C., eds., *Impacts, risks, and adaptation in the United States*, v. 2 of *Fourth national climate assessment: Washington D.C., U.S. Global Change Research Program*, p. 174–201, accessed August 31, 2022, at <http://doi.org/10.7930/NCA4.2018.CH4>.

- Zeebe, R.E., Ridgwell, A., and Zachos, J.C., 2016, Anthropogenic carbon release rate unprecedented during the past 66 million years: *Nature Geoscience*, v. 9, no. 4, p. 325–329, accessed August 31, 2022, at <https://doi.org/10.1038/ngeo2681><https://doi.org/10.1038/ngeo2681>.
- Zelikova, T.J., Blumenthal, D.M., Williams, D.G., Souza, L., LeCain, D.R., Morgan, J., and Pendall, E., 2014, Long-term exposure to elevated CO₂ enhances plant community stability by suppressing dominant plant species in a mixed-grass prairie: *Proceedings of the National Academy of Sciences of the United States of America*, v. 111, no. 43, p. 15456–15461, accessed August 31, 2022, at <https://doi.org/10.1073/pnas.1414659111>.
- Zhang, F., Biederman, J.A., Dannenberg, M.P., Yan, D., Reed, S.C., and Smith, W.K., 2021, Five decades of observed daily precipitation reveal longer and more variable drought events across much of the western United States: *Geophysical Research Letters*, v. 48, no. 7, 11 p, accessed August 31, 2022, at <https://doi.org/10.1029/2020GL092293>.
- Zhang, J., Felzer, B.S., and Troy, T.J., 2016, Extreme precipitation drives groundwater recharge—The northern high plains aquifer, central United States, 1950–2010: *Hydrological Processes*, v. 30, no. 14, p. 2533–2545, accessed August 31, 2022, at <https://doi.org/10.1002/hyp.10809>.
- Ziska, L.H., 2020, Climate change and the herbicide paradigm—Visiting the future: *Agronomy (Basel)*, v. 10, no. 12, 10 p., accessed August 31, 2022, at <https://doi.org/10.3390/agronomy10121953>.

