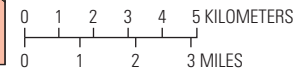
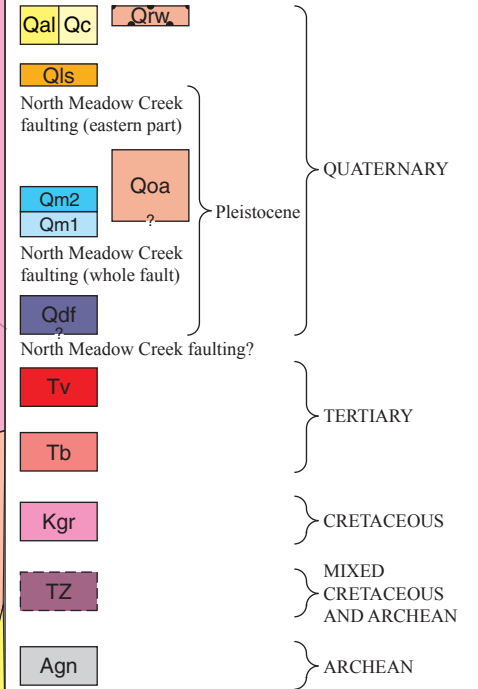


-111.88°
45.53°

-111.74°

CORRELATION OF MAP UNITS



45.47°
Base image from Google Earth photography September, 2014

DESCRIPTION OF MAP UNITS

- Qal** **Qc** **Young alluvium; colluvium**
- Qr** **Reworked boulder alluvium**—Reworked chiefly by gold dredge
- Qls** **Landslide deposits**
- Qoa** **Older alluvium**—Forms benches
- Qm2** **Qm1** **Glacial moraines**—Clasts unsorted, subrounded; sizes up to 3 m, but commonly cobbles, pebbles; 1 older, 2 younger
- Qdf** **Debris flow**—Clasts unsorted, angular to subrounded; sizes up to 2 m but commonly cobbles, pebbles; buff to orange clayey matrix

- Tv** **Rhyolite lava flow**—Varnished exterior; interior light pink to light gray; microphenocrysts of feldspar (few %), quartz (1%), mafic minerals (trace); obsidian float at base
- Tb** **Basal unit (rhyolite)**—Laminated light gray to gray sheared obsidian (shearing seen in thin section); unshaped obsidian at top, below lava flow (Tv); seen as float only
- Kgr** **Tobacco Root batholithic rocks** (Vuke and others, 2002)—Granitic rocks in “Revenoor Rocks” with abundant K-feldspar phenocrysts (up to 4 cm); near contact with unit Agn, includes both leucocratic and less silicic felsic rocks without large phenocrysts

- TZ** **Transition zone between Kgr and Agn**—Outcrops of both units Kgr and Agn in close proximity
- Agn** **Layered gneiss**—Chiefly quartzo-feldspathic gneiss and amphibolite
- Contact**—Solid where location certain, dashed where location uncertain
- Fault**—Solid where location certain, dashed where location uncertain, dotted where buried
- Foliation**—Circled number in red associated with number in Table 1
- Inclined**
- Vertical**
- Volcanic center**
- Sample location and number**

