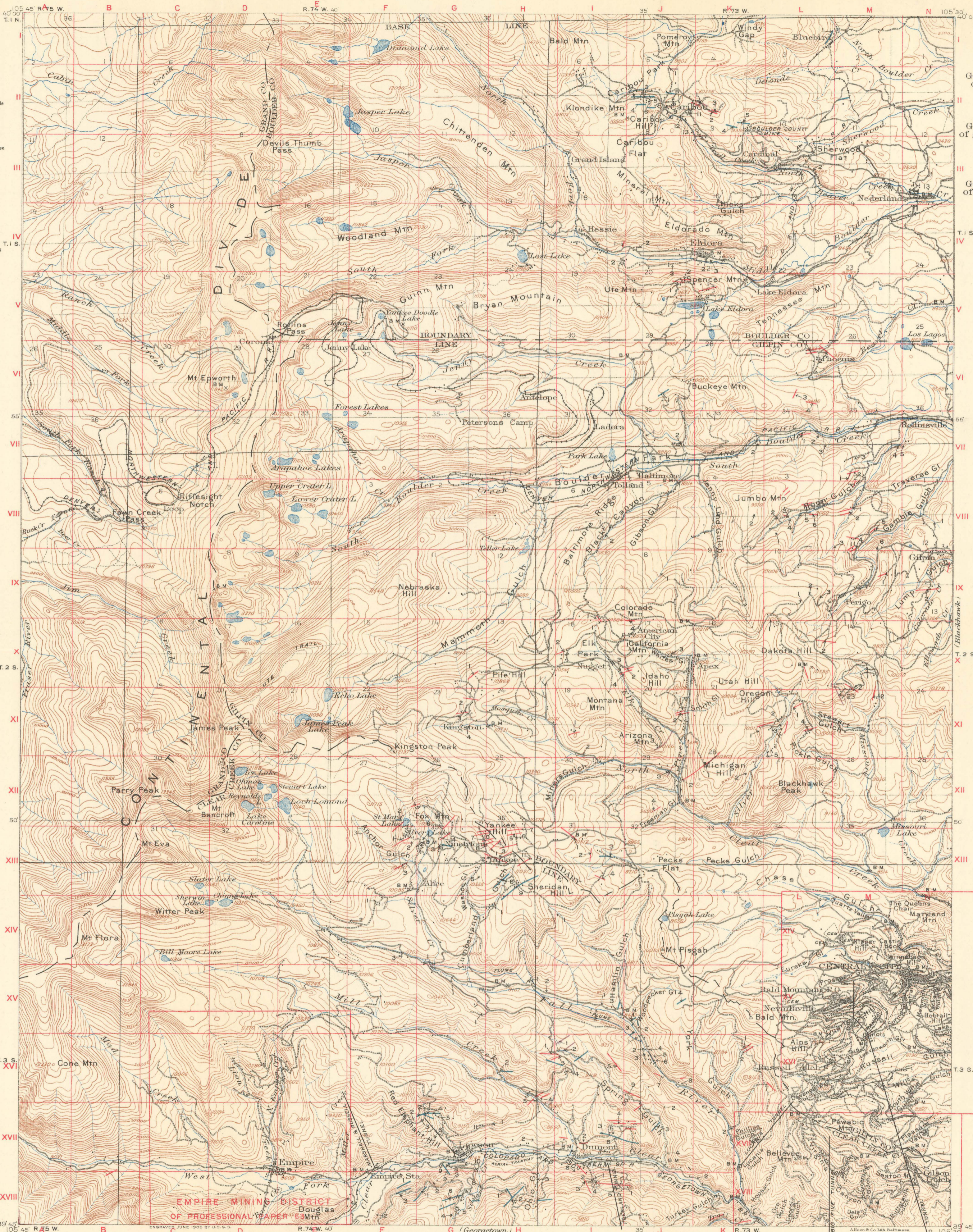


FINDING LIST OF MINES  
ARRANGED BY COORDINATES

Table listing mines by coordinate (e.g., B-XVII, F-XIII, G-XI) and their names (e.g., La Moa, Little Blanche, America, Commercial Union, etc.).

ARRANGED ALPHABETICALLY

Table listing mines alphabetically (e.g., Albro, Almond, Alton, etc.) with their corresponding coordinate codes.



LEGEND

- Gold-silver veins of pyritic type
- Gold-silver veins of galena-sphalerite type
- Gold-silver veins of composite type

E. M. Douglas, Geographer in charge  
Topography by Frank Tweedy  
Triangulation by H. L. Baldwin, Jr.  
Surveyed in 1903  
Culture revised in 1910 by Lee Morrison

**TOPOGRAPHIC MAP OF THE CENTRAL CITY QUADRANGLE, COLORADO**  
SHOWING LOCATION OF MINES OUTSIDE THE AREAS OF THE LARGE-SCALE MAPS,  
POSITION AND CLASSIFICATION OF VEINS, AND POSITION OF LARGER TUNNELS

Scale 82500  
1 2 3 4 5 Miles  
1 2 3 4 5 Kilometers

Contour interval 100 feet.  
Datum is mean sea level.  
1917

IDAHO SPRINGS QUADRANGLE  
Edition of Dec. 1912.  
Veins mapped by Edson S. Bastin  
assisted by James M. Hill  
Surveyed in 1911 and 1912