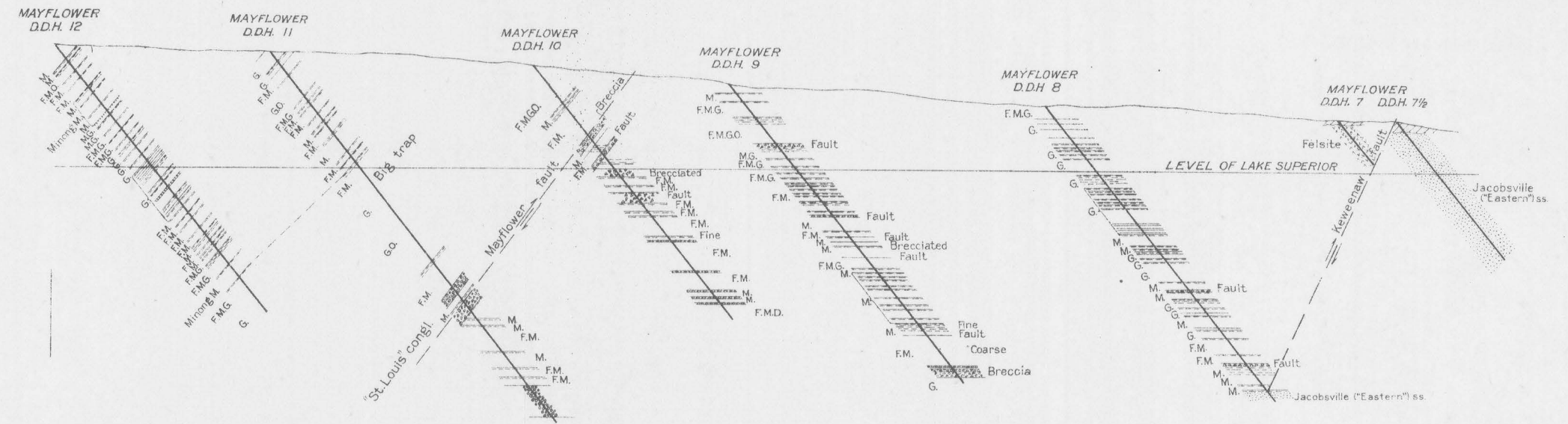
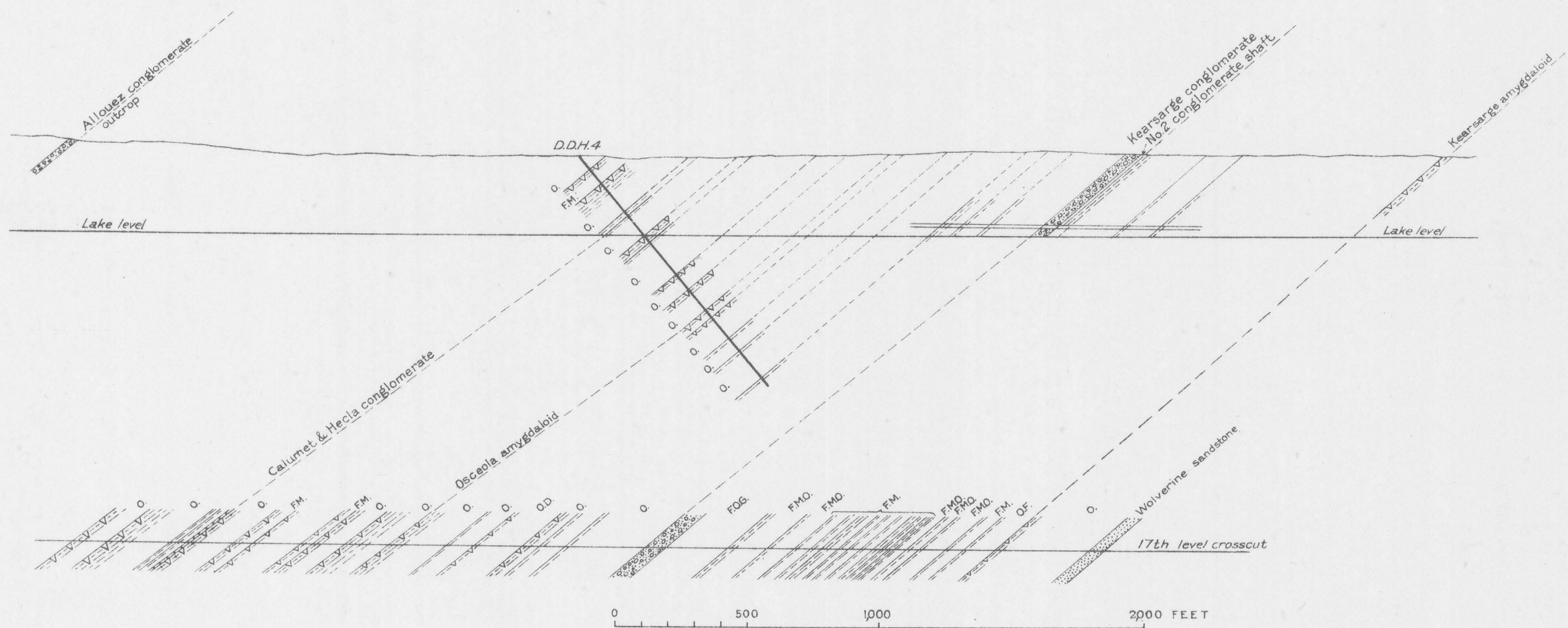


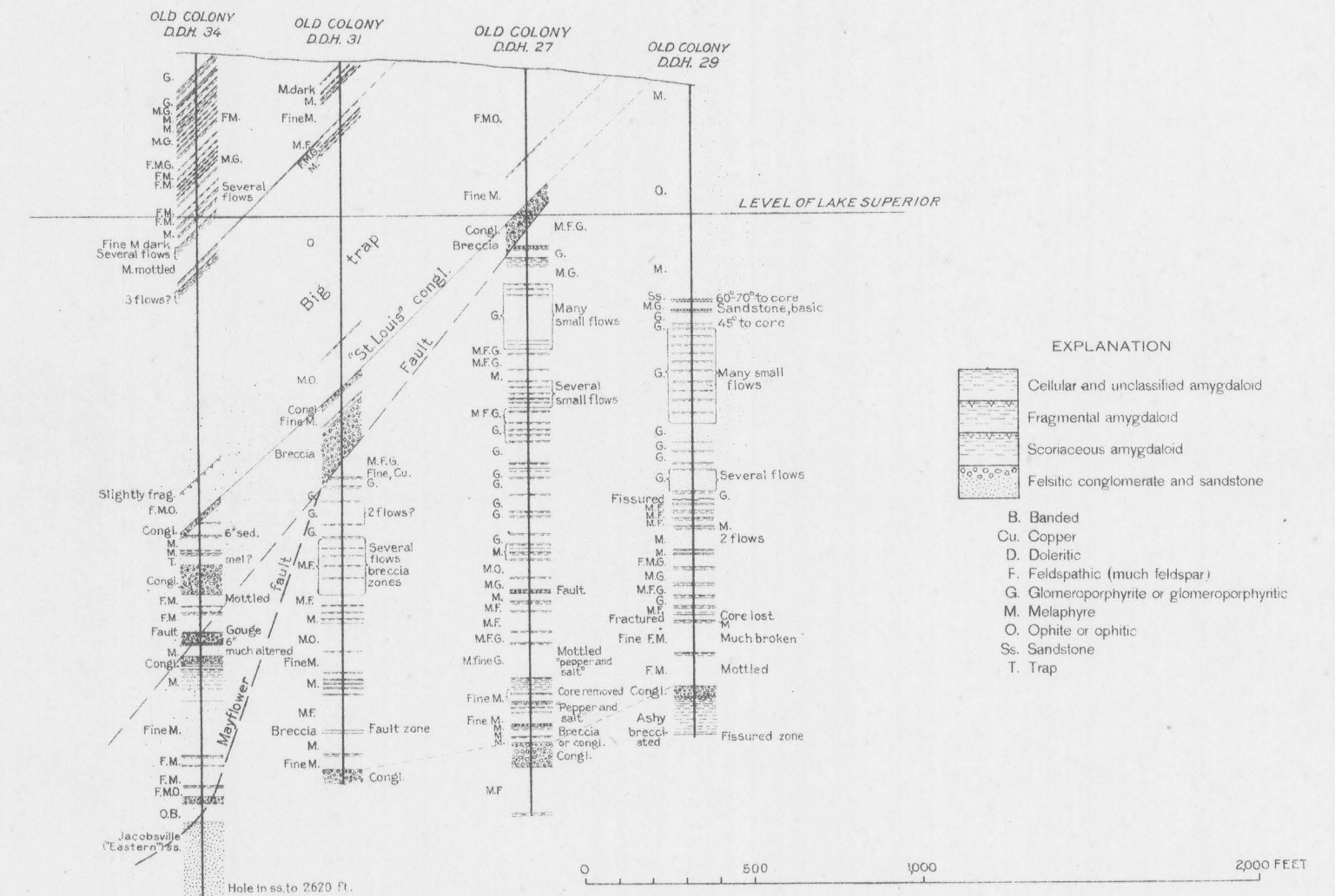
MOHAWK SECTION, T. 57 N., R. 32 W.



MAYFLOWER - OLD COLONY SECTION, T. 56 N., R. 32 W.



AHMEEK SECTION, T. 57 N., R. 32 W.



- EXPLANATION**
- Cellular and unclassified amygdaloid
 - Fragmental amygdaloid
 - Scoriaceous amygdaloid
 - Felsitic conglomerate and sandstone
 - B.** Banded
 - Cu.** Copper
 - D.** Doleritic
 - F.** Feldspathic (much feldspar)
 - G.** Glomeroporphyrite or glomeroporphyritic
 - M.** Melaphyre
 - O.** Ophite or ophitic
 - Ss.** Sandstone
 - T.** Trap

GEOLOGIC SECTIONS IN TPS. 56 AND 57 N., R. 32 W.