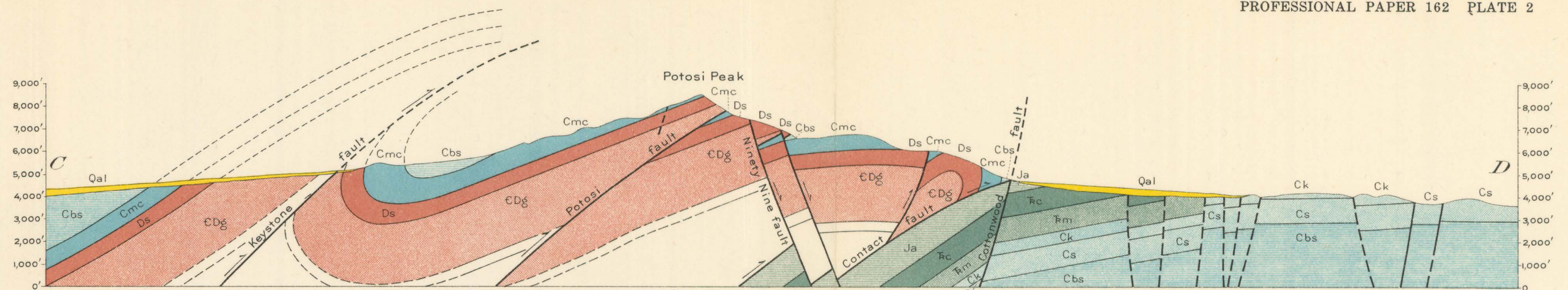
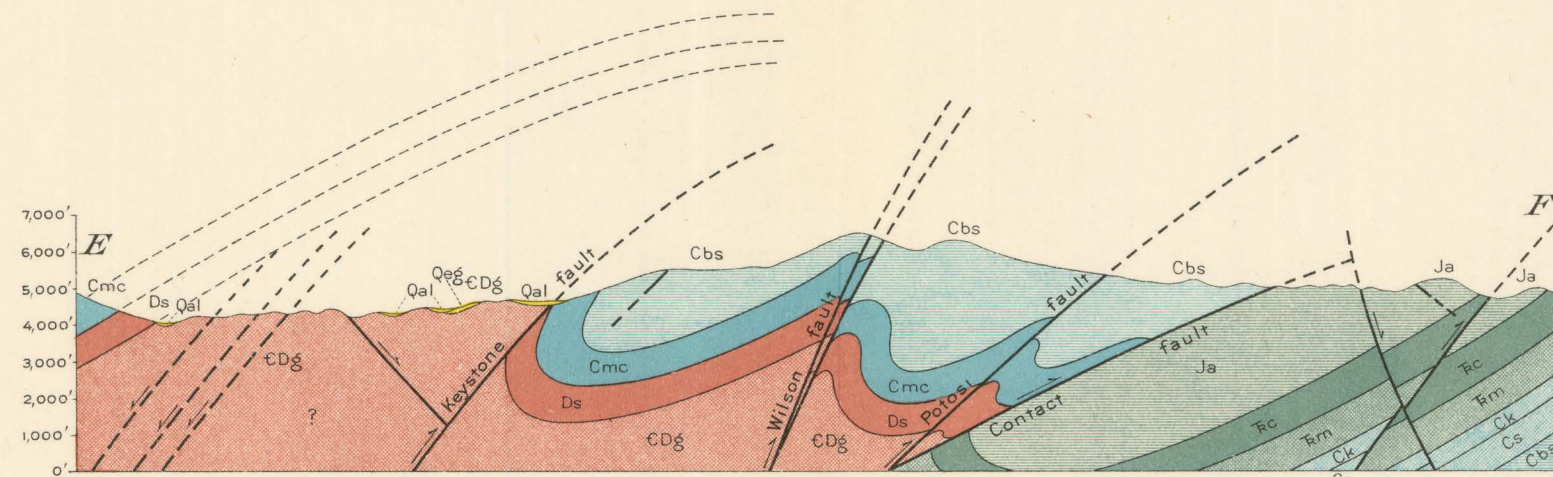


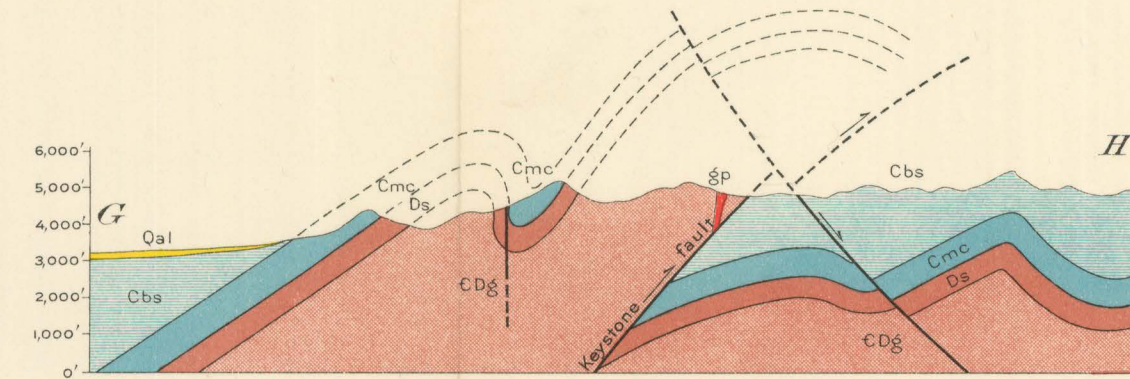
Section along line A-B



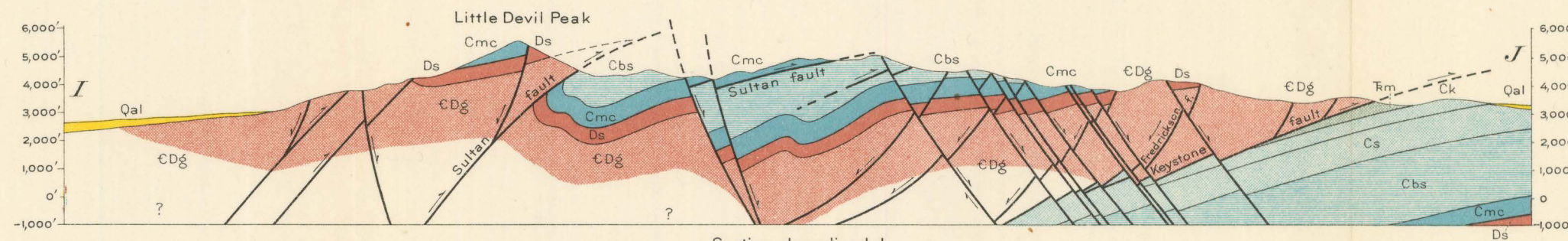
Section along line C-D



Section along line E-F

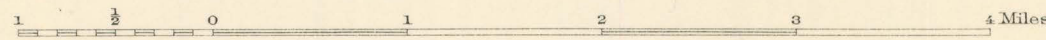


Section along line G-H



Section along line I-J

Qal, Alluvium; Ja, Aztec sandstone; Rc, Chinle formation and Shinarump conglomerate; Firm, Moenkopi formation; Ck, Kaibab limestone; Cs, Supai formation; Cbs, Bird Spring formation; Cmc, Monte Cristo limestone; Ds, Sultan limestone; CDg, Goodsprings dolomite; gp, granite porphyry, sills, and dikes.



GEOLOGIC STRUCTURE SECTIONS OF THE GOODSPRINGS QUADRANGLE, NEV.-CALIF.