

EXPLANATION

BEDDED ROCKS

- Qg: Glaciofluvial deposits
- Qld: Lake deposits (Silt, sand, and gravel)
- Tt: Tuff formation (Semi-consolidated sands, conglomerate, and carbonaceous shale)
- Ol: Dolomite and limestone
- Oi: Leebetter slate (Black carbonaceous slate; black limestone near top)
- Cml: Metaline limestone (Limestone and dolomite; phyllite near base)
- Cmp: Maiden phyllite (Includes beds of limestone near top and platy quartzite near base)
- Cg: Gypsum quartzite (Includes conglomerate and phyllite)
- Cm: Monk formation (Predominantly phyllite; quartzitic limestone near top; conglomerate Cmc. at base)
- lv: Leola volcanics (Predominantly greenstone, with green schist)
- sc: Shedroof conglomerate (Volcanic conglomerate, sc. with phyllite, sc. thin quartzite, sc. and greenstone, sc. and limestone)

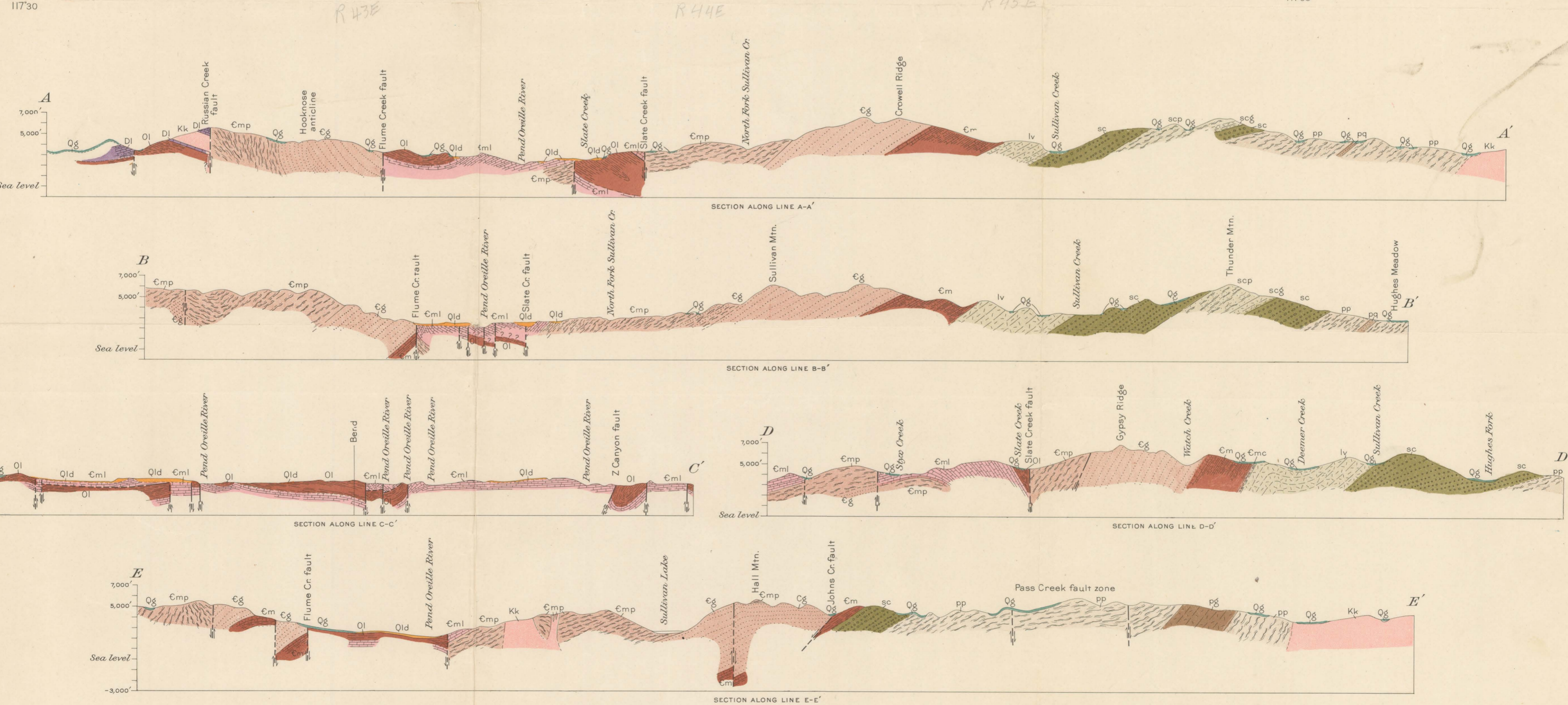
IGNEOUS INTRUSIVE ROCKS

- Kk: Kaniku batholith

Other symbols:

- Lampophyre dike showing dip
- Fault showing dip
- Vertical fault
- Strike and dip of beds
- Strike of vertical beds
- Strike and dip of dominant foliation
- Strike of vertical dominant foliation
- Pitch of linear structure
- Horizontal linear structure
- Axis of anticline
- Axis of syncline
- Mine
- Prospect
- Adit
- 12

- LIST OF MINES AND PROSPECTS**
- | | | | |
|----|---------------------------|----|------------------------|
| 1 | Pend Oreille | 22 | Z Canyon Mutual |
| 2 | Morning and Mammoth | 23 | Z Canyon Mutual placer |
| 3 | Grandview | 24 | Scandinavian |
| 4 | Metaline Falls | 25 | Harvey bar |
| 5 | Washington | 26 | Fluxy |
| 6 | Bella May | 27 | Robert E. Lee |
| 7 | New Bella May adit | 28 | Lead King |
| 8 | Wolf Creek | 29 | Coffin |
| 9 | Oricle | 30 | E. J. Hoage |
| 10 | O K | 31 | Giant |
| 11 | Diamond R. | 32 | Tomcat |
| 12 | Riverside | 33 | Frisco Standard |
| 13 | Lucky Strike | 34 | My Era |
| 14 | Dumont Bros., lower group | 35 | United Treasure |
| 15 | Dumont Bros., upper group | 36 | Just Time |
| 16 | Troyer | 37 | Gypsy Copper Camp |
| 17 | Lead Hill | 38 | Honey Creek |
| 18 | Bailey and Hanson | 39 | Mule Deer |
| 19 | Sanborn | 40 | Coffin |
| 20 | Lakeview | 41 | Lehigh quarry |
| 21 | Z Canyon | | |

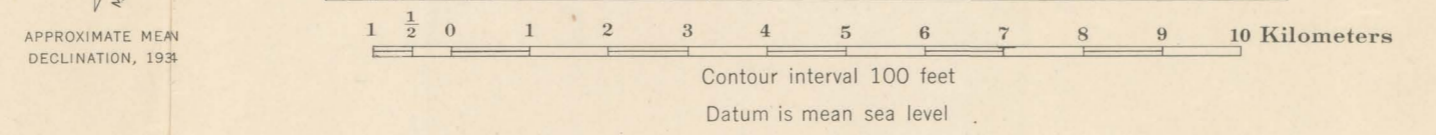
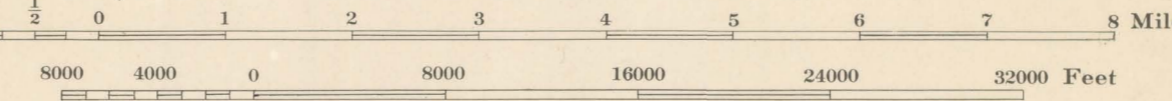


GEOLOGIC MAP AND SECTIONS OF THE METALINE QUADRANGLE, WASHINGTON AND IDAHO

Base by U. S. Geological Survey

Geology by Charles F. Park Jr., Ralph S. Cannon, Jr., and George R. Gibson. Surveyed in 1936-37.

Scale 1/36000



TRUE NORTH
 MAGNETIC NORTH
 APPROXIMATE MEAN DECLINATION, 1935