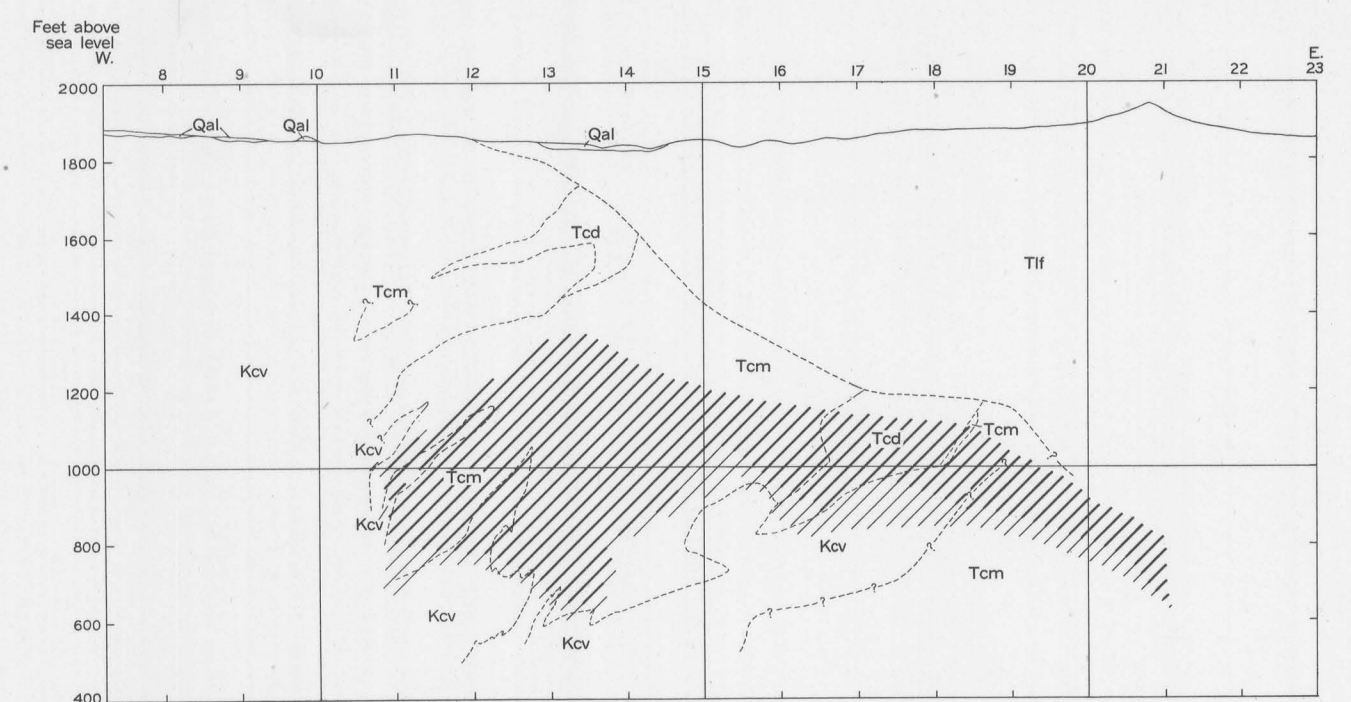
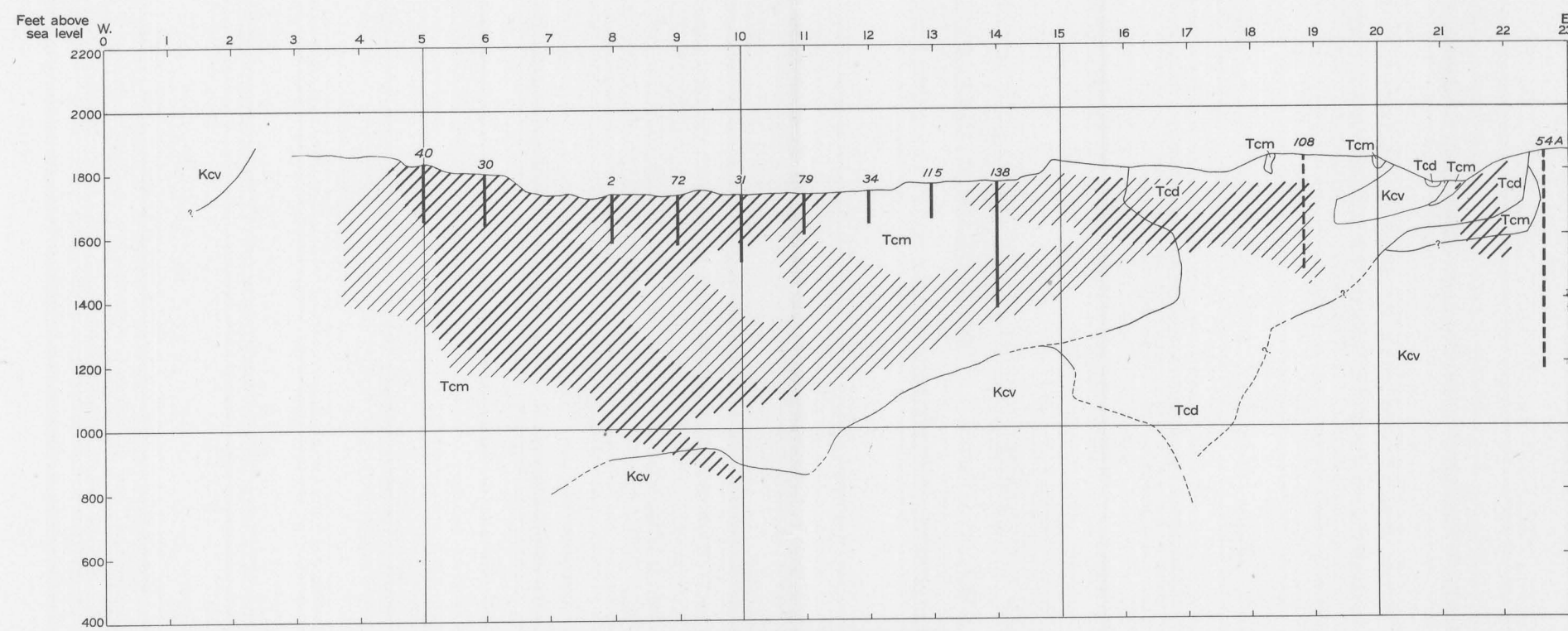


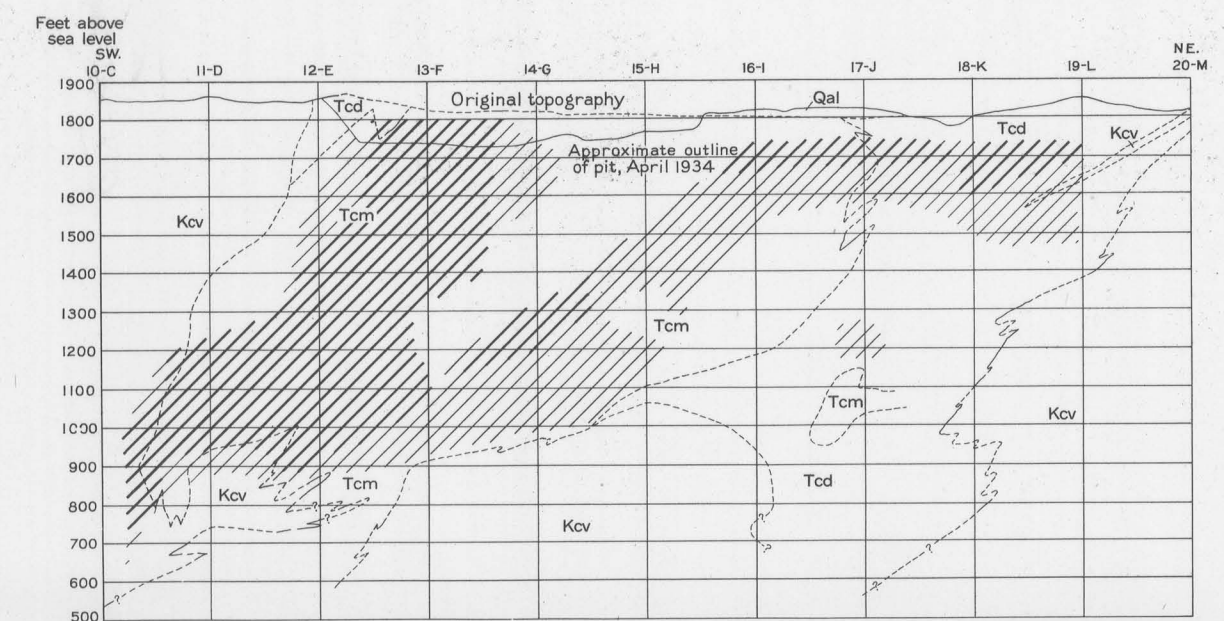
SECTION THROUGH COORDINATE Q



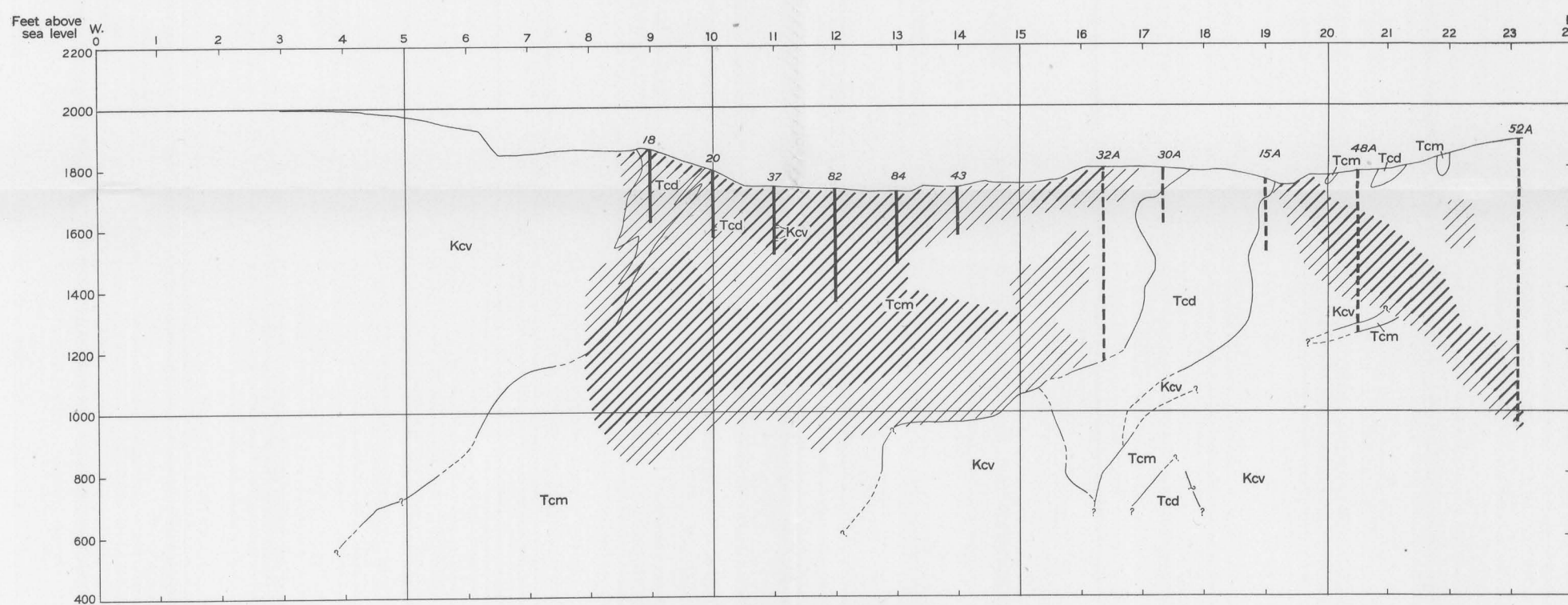
SECTION THROUGH COORDINATE B



SECTION THROUGH COORDINATE L



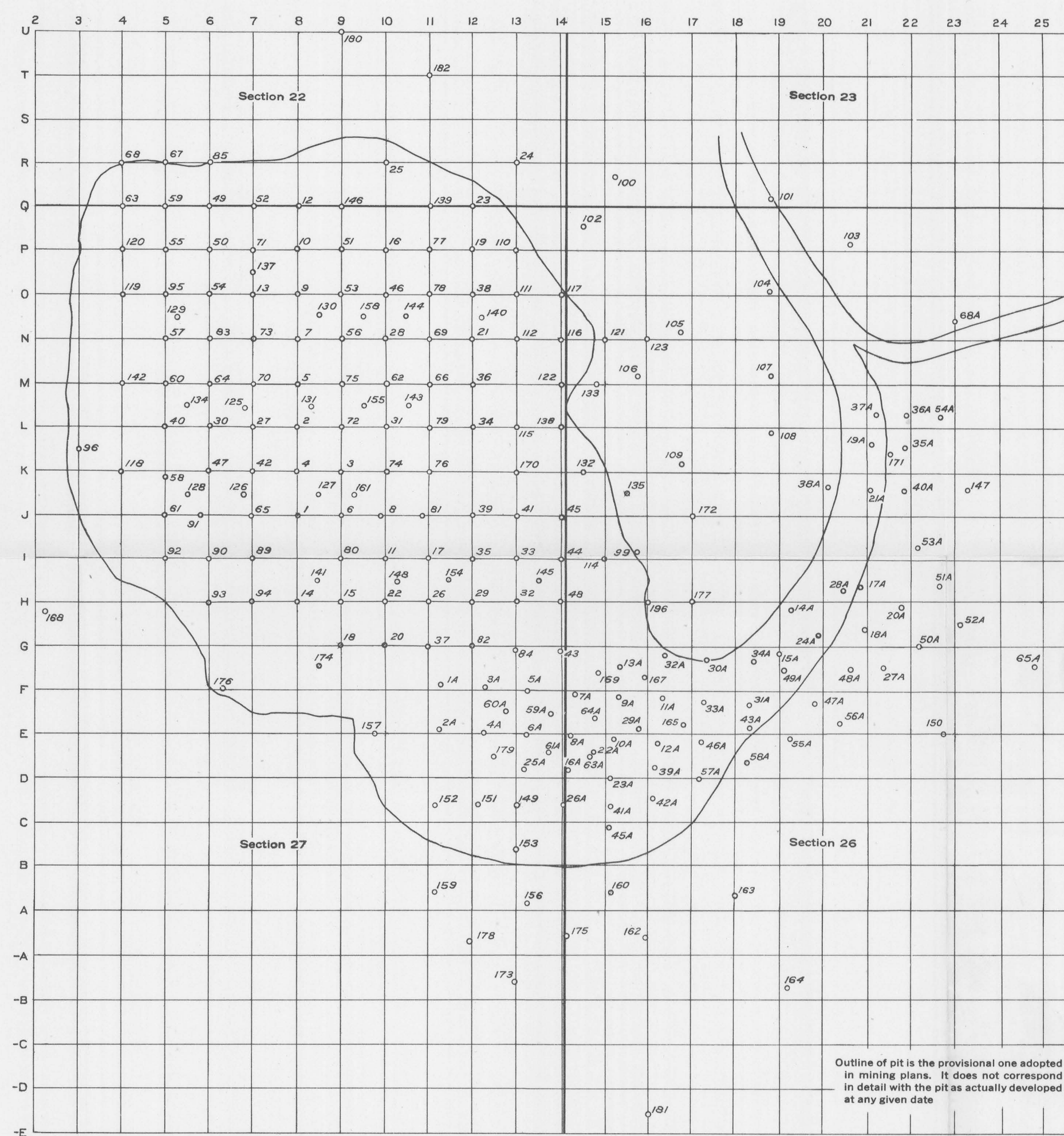
SECTION N45°E. THROUGH NEW CORNELIA MINE



SECTION THROUGH COORDINATE G

EXPLANATION

- Qal
- Alluvium
- Tf
- Locomotive fanglomerate
- Tcm
- Cornelia quartz monzonite (Main facies)
- Tod
- Cornelia quartz monzonite (Dioritic border facies)
- Kcv
- Concentrator volcanics
- More than .8 percent copper
- .5 to .8 percent copper
- Diamond-drill hole (Dashed where projected into section)



KEY MAP SHOWING COORDINATES, DRILL HOLES, AND OUTLINE OF OPEN PIT, TOWNSHIP 12 SOUTH, RANGE 6 WEST



Outline of pit is the provisional one adopted in mining plans. It does not correspond in detail with the pit as actually developed at any given date.