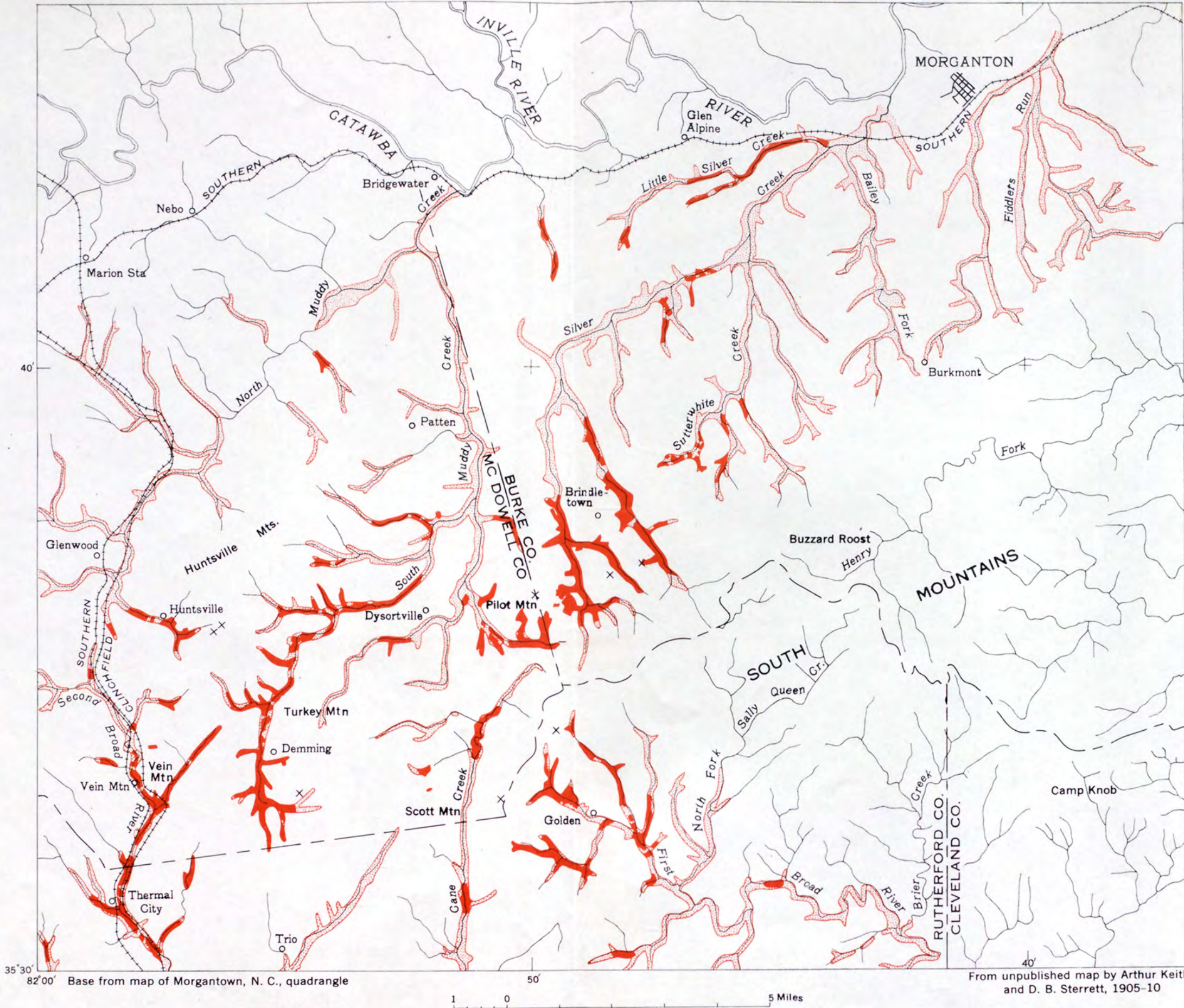


(200)
9R
no. 213



EXPLANATION



Stream alluvium and surface mantle, probably gold bearing



Known placer deposits largely mined out by 1905



Prospects on gold quartz veins

35°30' 82°00' Base from map of Morgantown, N. C., quadrangle

1 0 5 Miles

40' From unpublished map by Arthur Keith and D. B. Sterrett, 1905-10

GOLD PLACERS AND LODS IN THE SOUTHWEST PART OF THE MORGANTOWN QUADRANGLE, NORTH CAROLINA