

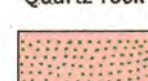
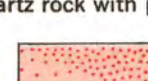
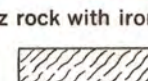
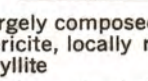


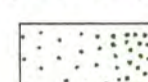
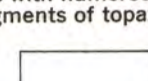
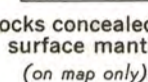
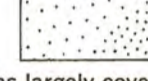

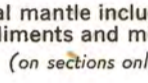
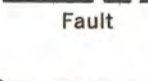
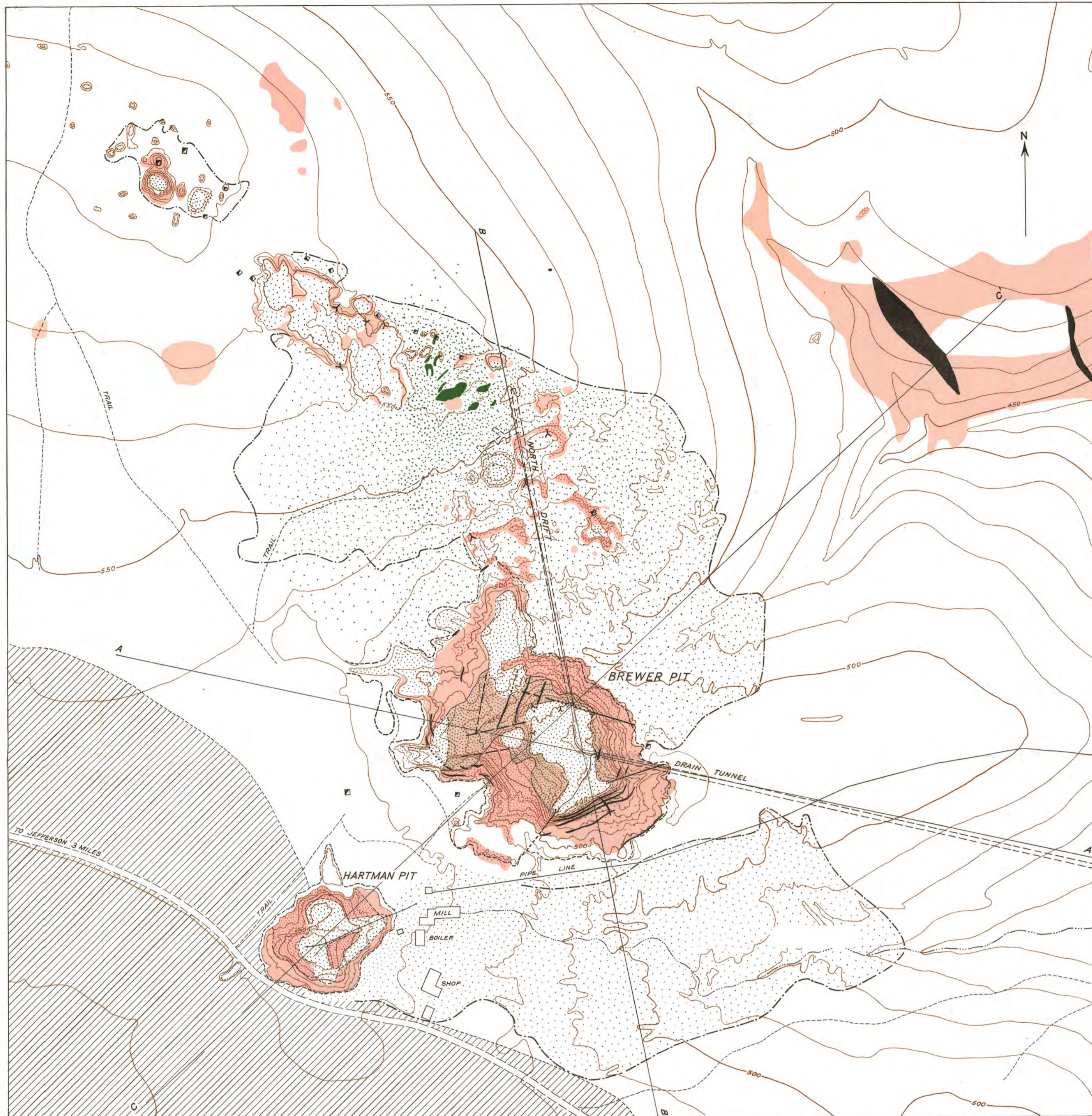
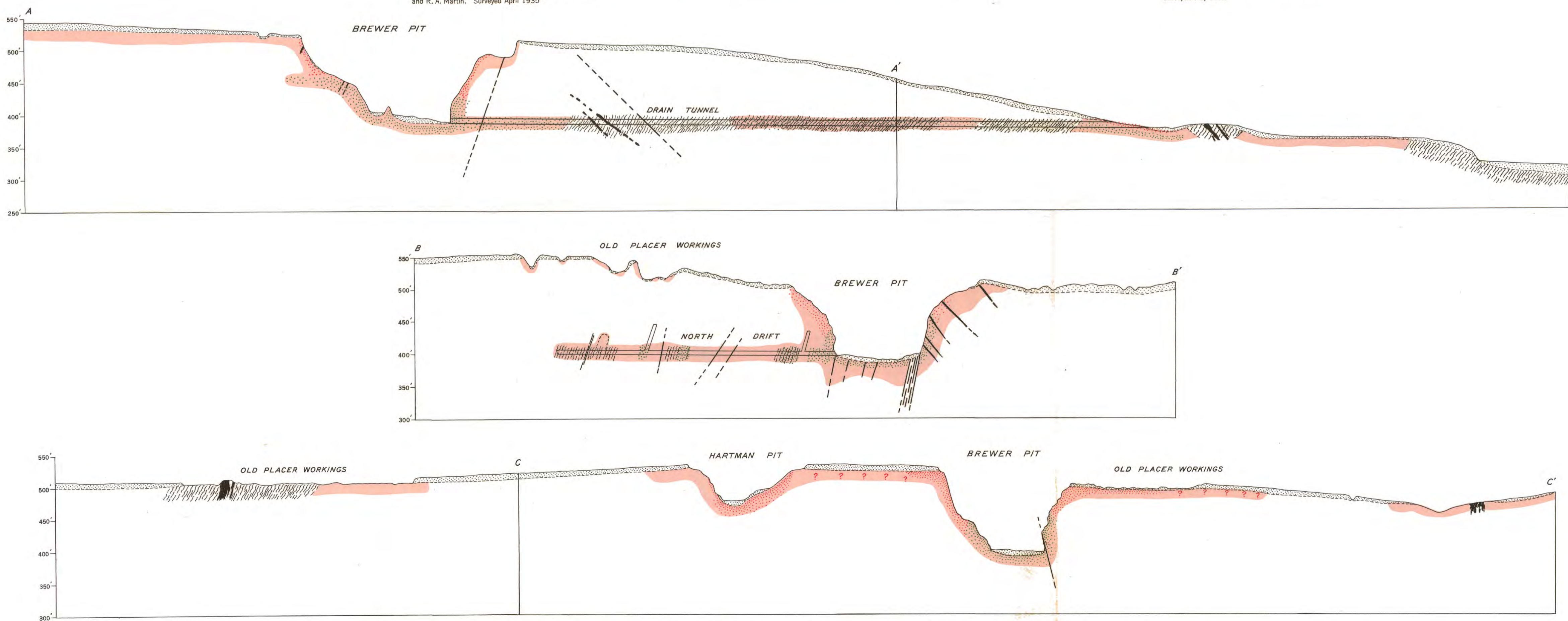


- EXPLANATION**
-  Coastal Plain sediments
 -  Quartz rock
 -  Quartz rock with pyrite
 -  Quartz rock with iron oxides
 -  Schist largely composed of quartz and sericite, locally rich in pyrophyllite (on sections only)
 -  Barren quartz vein
 -  Topaz rock in place
 -  Areas with numerous loose fragments of topaz rock
 -  Rocks concealed by surface mantle (on map only)
 -  Areas largely covered by debris and mine dumps
 -  Superficial mantle including Coastal Plain sediments and mining debris (on sections only)
 -  Fault
 -  Surface projection of underground workings
 -  Boundary of areas formerly worked as placer
 -  Edge of Brewer and Hartman pits



Topography by C. G. Dickinson, assisted by L. O. Rowland, and R. A. Martin. Surveyed April 1935

Geology by C. E. Bass, W. T. Holland, and J. T. Pardee. Surveyed May 1935



MAP AND SECTIONS SHOWING MINE WORKINGS AND GEOLOGY, BREWER MINE, CHESTERFIELD COUNTY, SOUTH CAROLINA

