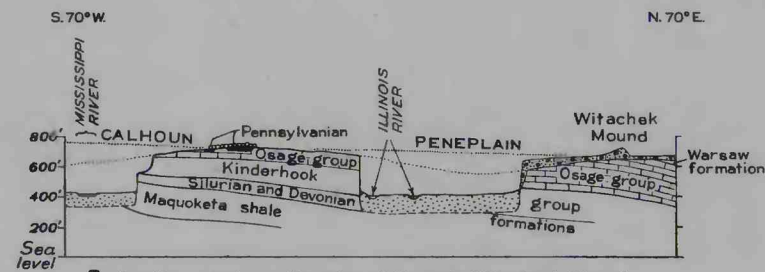
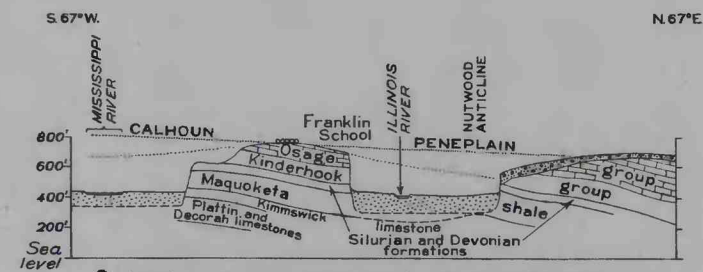


A. Section from Grover, St. Louis County, Missouri, northward to Farmer Ridge, Calhoun County, Illinois



B. Section east-northeastward through Witachek Mound, Green County, Illinois



C. Section east-northeastward past Franklin School, Calhoun County, Illinois

EXPLANATION
POST-PALEOZOIC DEPOSITS
(LOESS COVER OMITTED)

- Recent stream deposits
- Illinoian drift
- Grover gravel (Tertiary)

GENERALIZED CROSS SECTIONS SHOWING STRUCTURAL AND PHYSIOGRAPHIC RELATIONS IN AND ADJACENT TO HARDIN AND BRUSSELS QUADRANGLES

