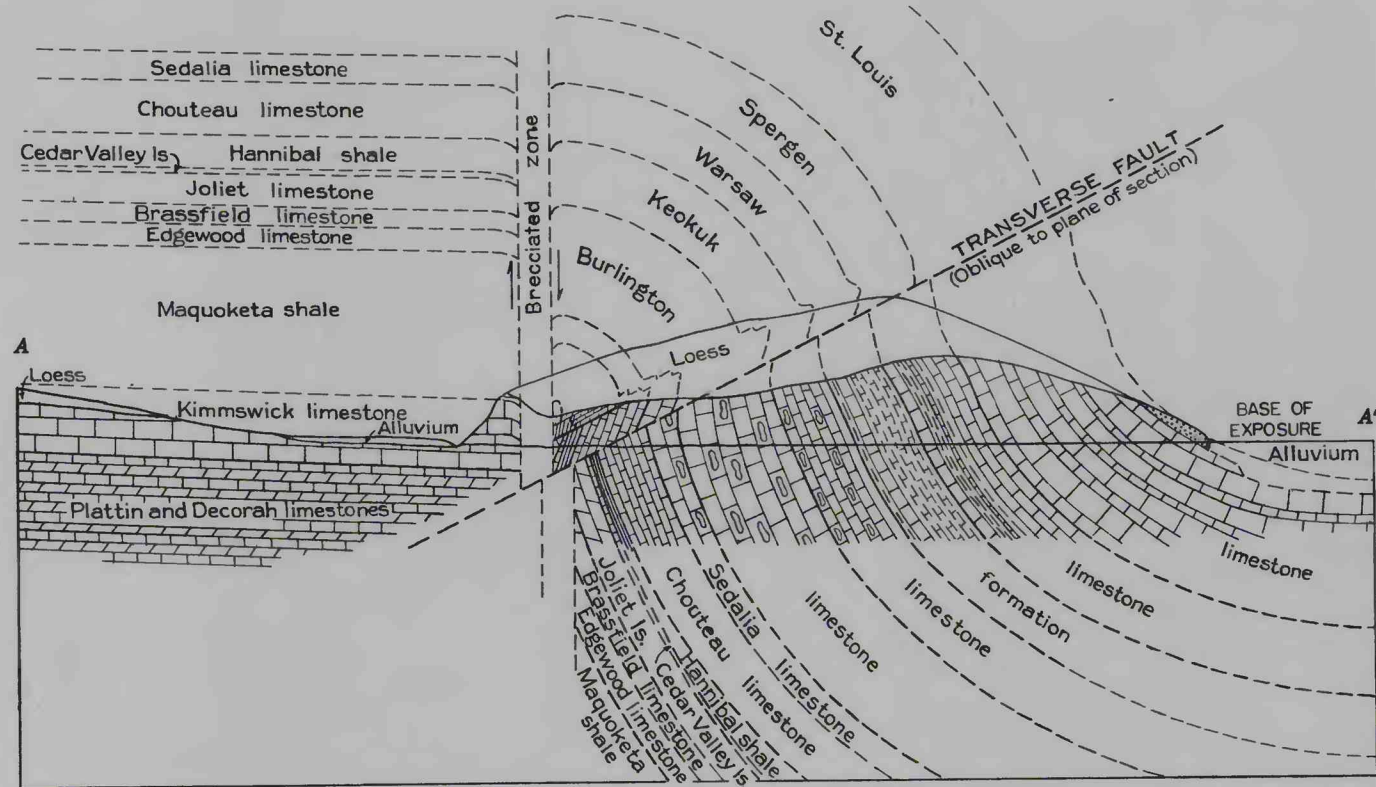


N. 15° E.

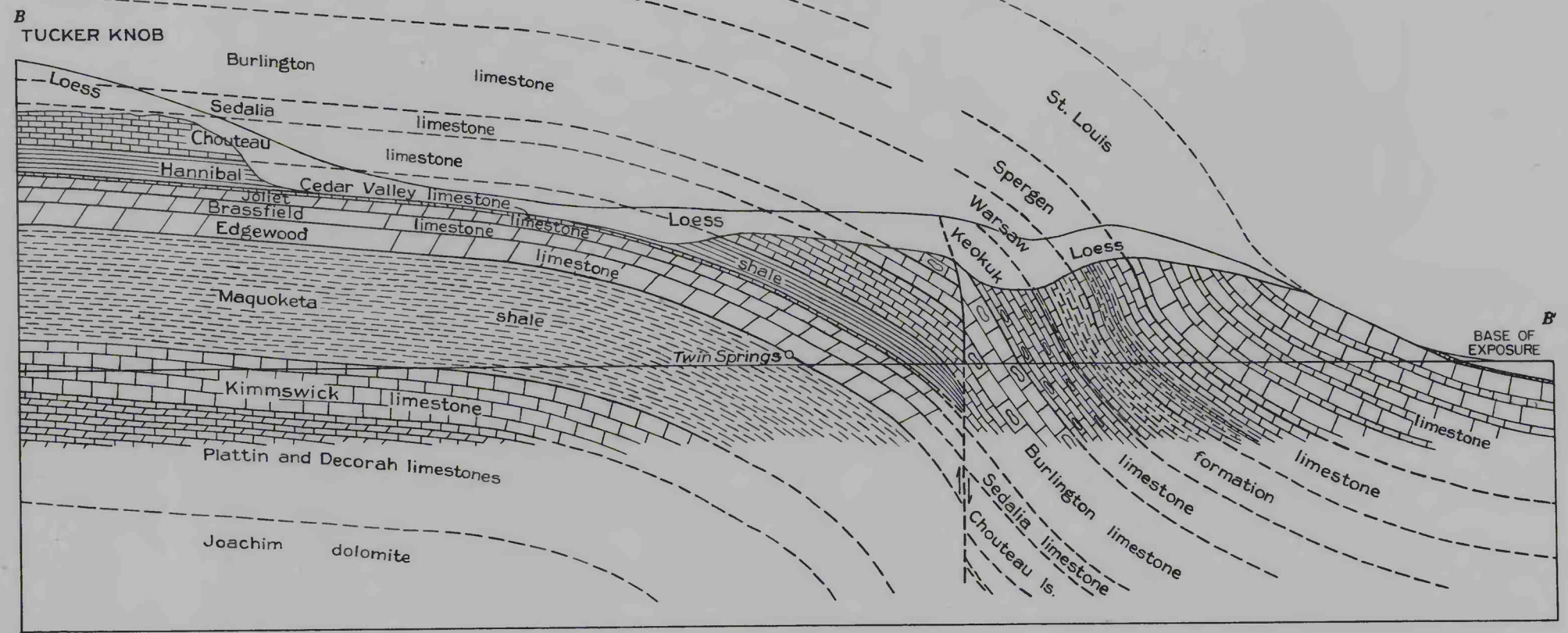
S. 15° W.



A. SECTION AT THE WEST SIDE OF DEER LICK HOLLOW

N. 5° E.

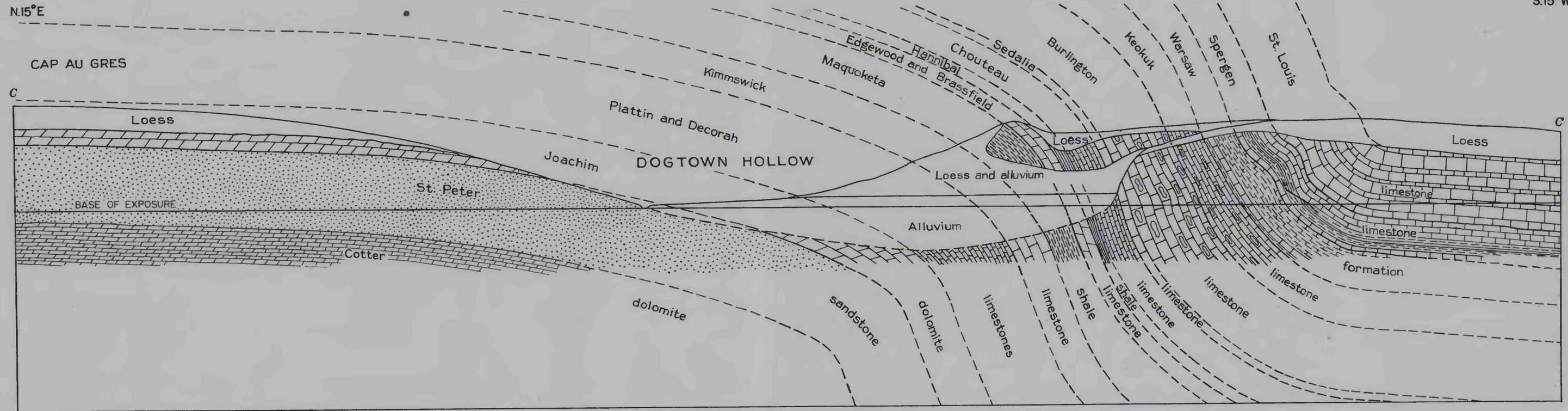
S. 5° W.



B. SECTION AT TWIN SPRINGS

N. 15° E.

S. 15° W.



C. SECTION AT CAP AU GRES AND THE MOUTH OF DOGTOWN HOLLOW, SUPPLEMENTED IN RIGHT CENTER BY DATA FROM RIDGE 1,000 FEET EAST OF LINE OF SECTION

