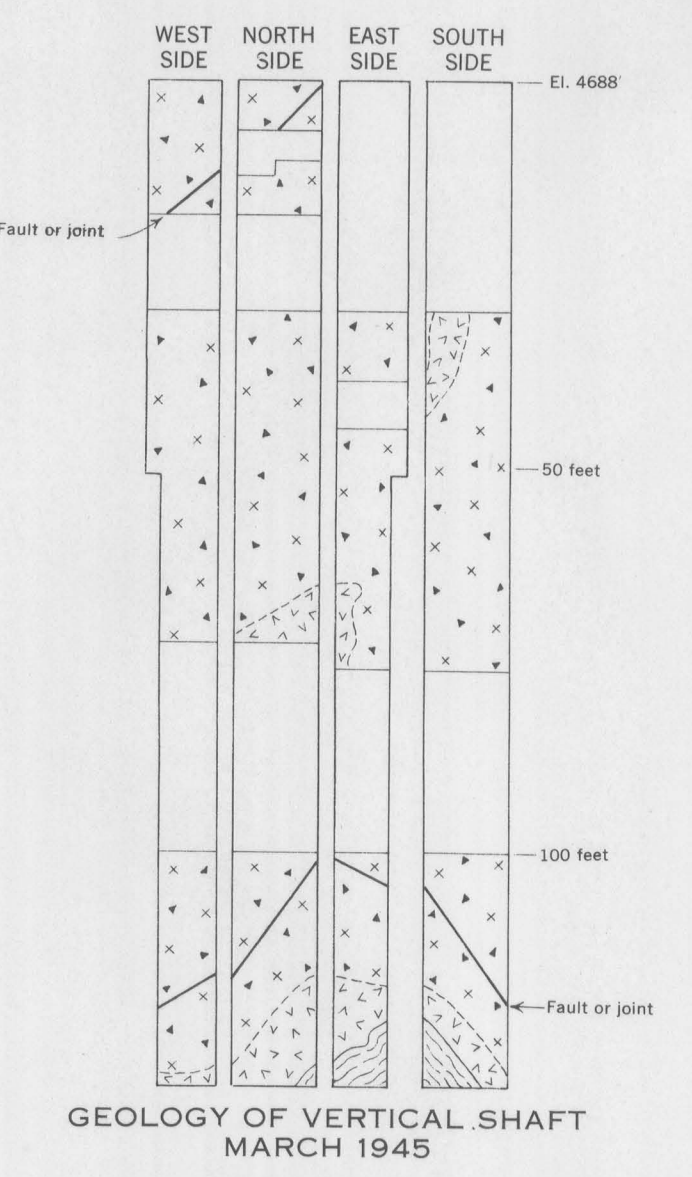
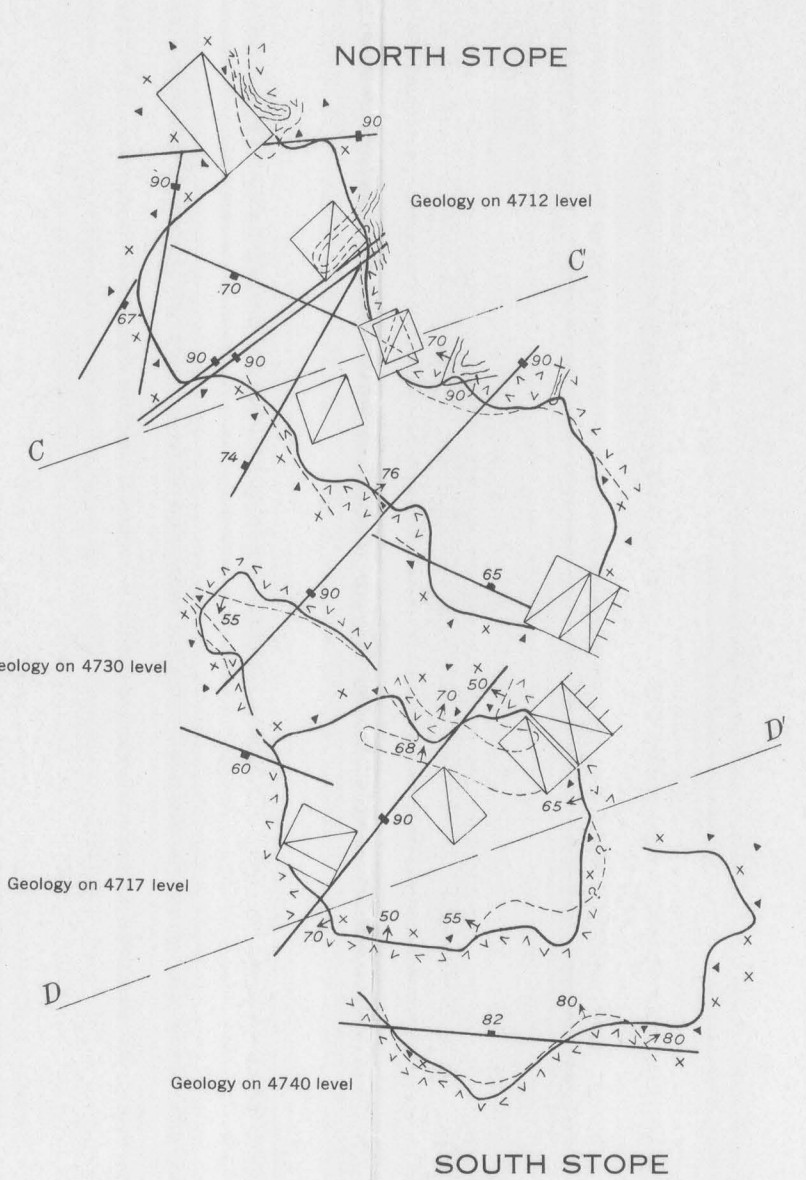
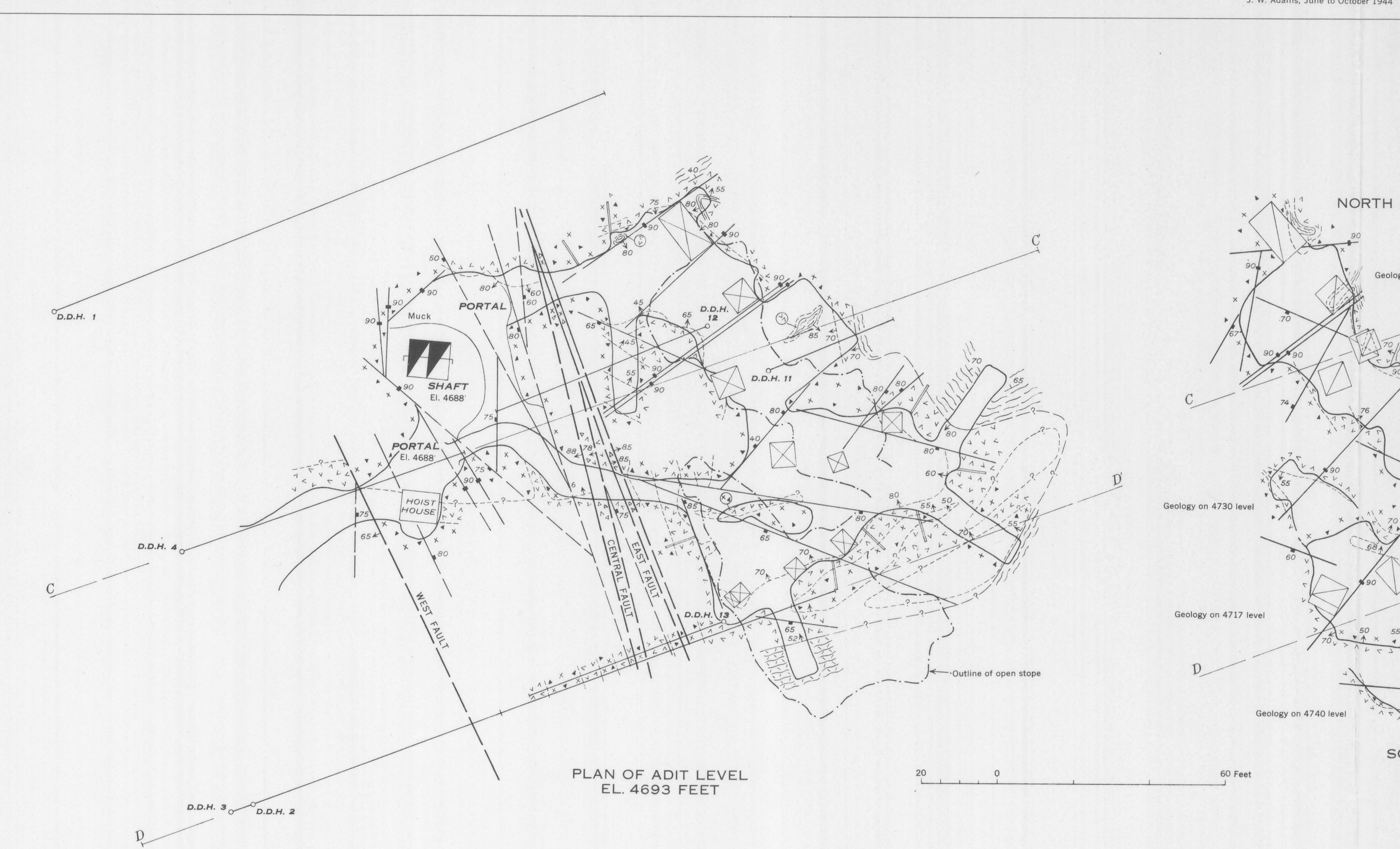
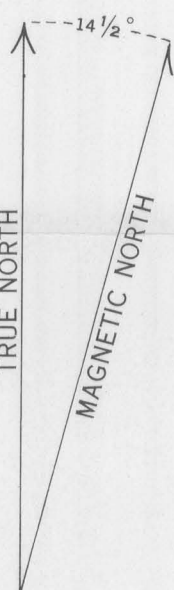


EXPLANATION

- Overburden, on surface map
- Fault breccia (combined with rock symbol)
- Quartz veins
- Quartz orthite pegmatite
- Quartz-spodumene pegmatite
- Quartz-spodumene-albite pegmatite
- Albite-quartz-muscovite pegmatite
- Albite-quartz pegmatite
- Hornblende gneiss and schist (medium to coarse grained)
- Quartz-mica schist and quartzite
- Hornblende schist and quartzite (fine-grained)
- Contact, showing dip
- Vertical contact
- Approximate contact
- Contacts projected
- Inferred contact
- Contact between pegmatite units
- Inferred contact between pegmatite units
- Limit of exposure
- Fault, showing dip
- Fault, projected to surface
- Shear zones
- Strike and dip of beds
- Strike of vertical beds
- Strike and dip of foliation
- Strike of vertical foliation
- Plunge of linear element
- Axis of roll
- Strike and dip of joints
- Strike of vertical joints
- Vertical shaft
- Vertical shaft with headframe
- Shaft going above and below level
- Foot of raise or winze
- Head of raise or winze
- Rim of excavation
- Limit of underground workings
- U. S. Bureau of Mines diamond drill holes
- Dump



Geology by L. R. Page and J. W. Adams, June 1944 to March 1945