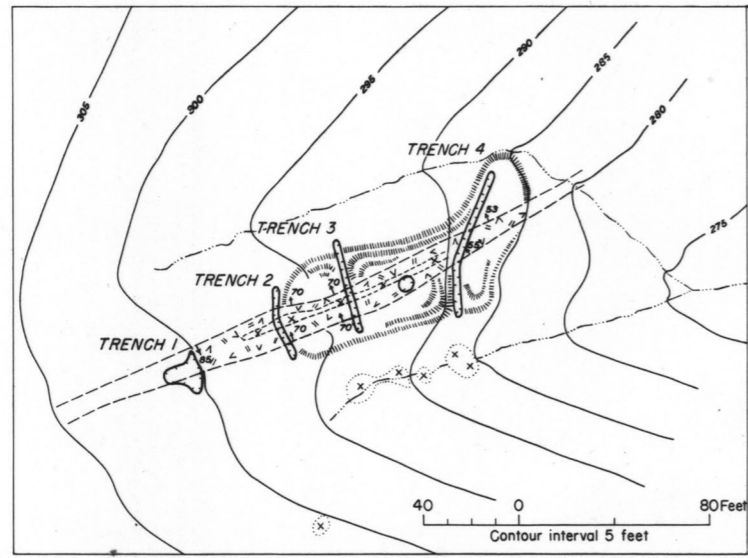
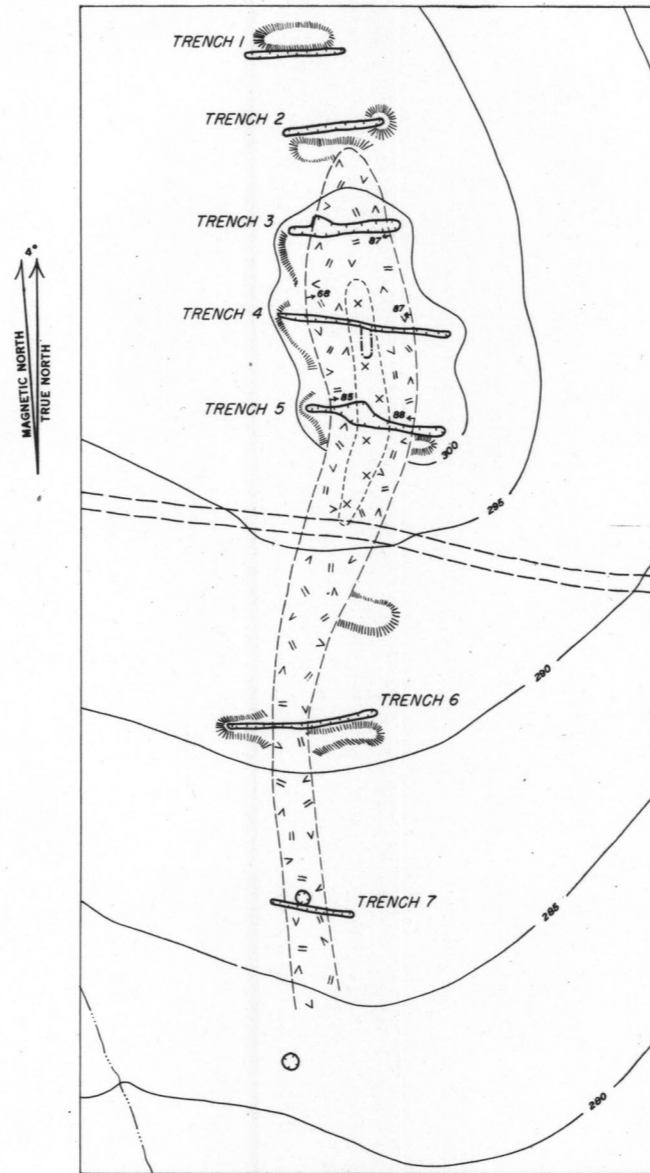


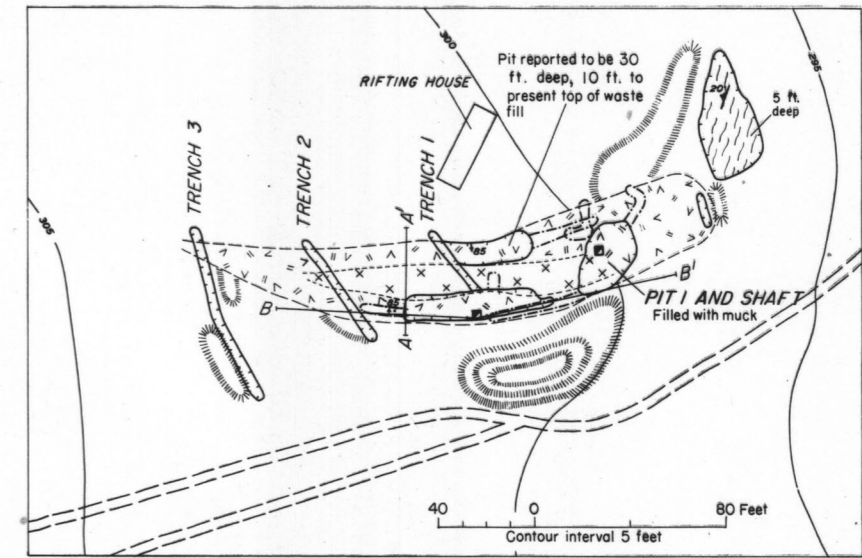
- EXPLANATION**
- Backfill or waste (in section)
 - Massive quartz
 - Plagioclase-quartz muscovite pegmatite
 - Schist and gneiss (Pattern shown in section only)
 - Contact, showing dip; dashed where approximately located
 - Contact between pegmatite units
 - Strike and dip of foliation
 - Shaft
 - Outline of underground workings
 - Pit or trench
 - Dump (not shown on pegmatite bodies)



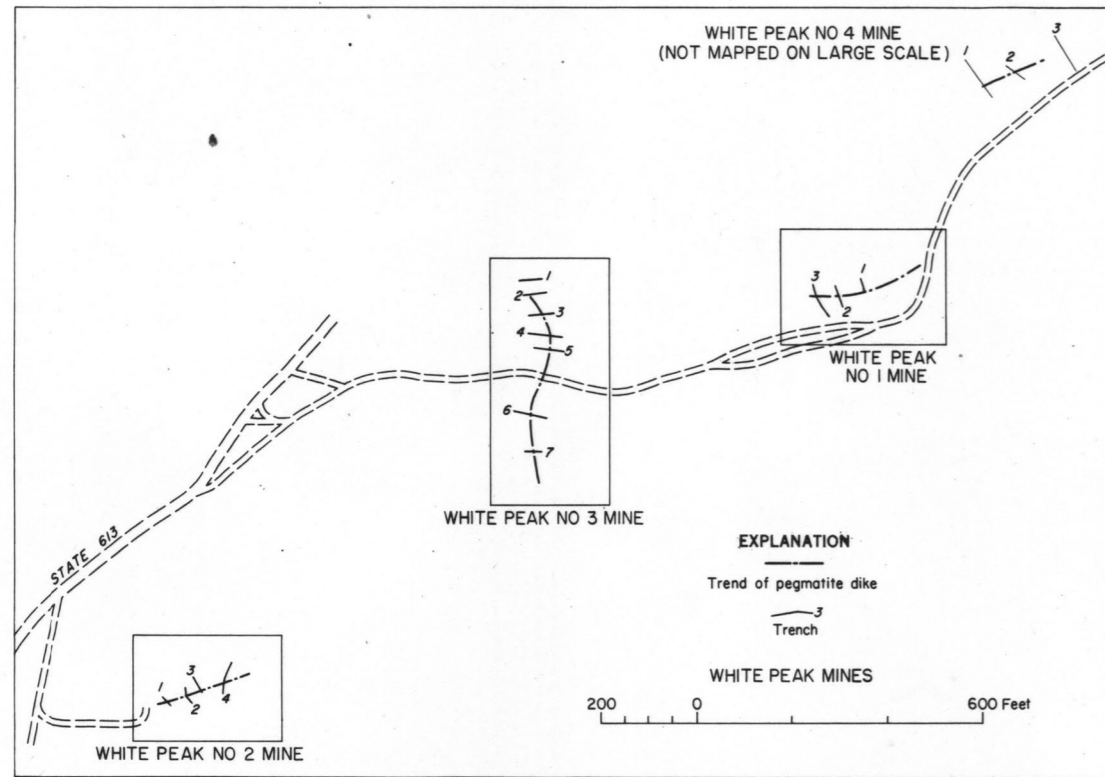
WHITE PEAK NO 2 MINE



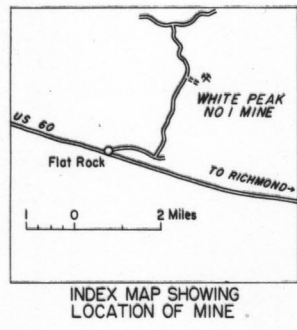
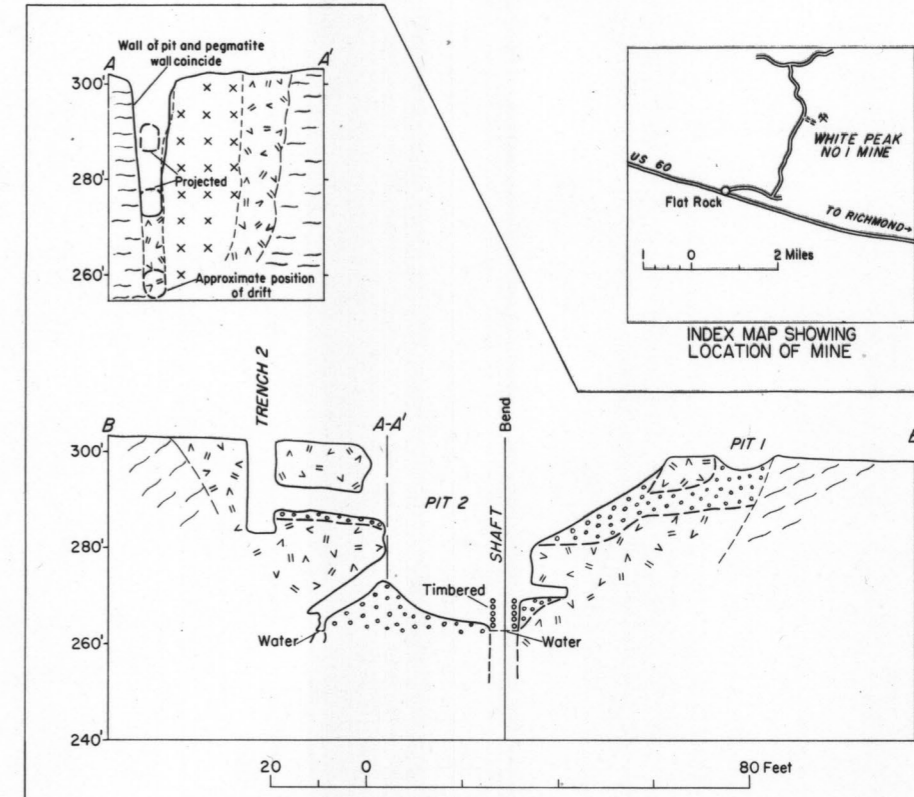
WHITE PEAK NO 3 MINE



WHITE PEAK NO 1 MINE



- EXPLANATION**
- Trend of pegmatite dike
 - Trench
- WHITE PEAK MINES



Mapped by R. W. Lemke, May 1944. Revised by R. W. Lemke and W. R. Griffiths, March 1945

GEOLOGIC MAPS AND SECTIONS OF THE WHITE PEAK MINES, POWHATAN COUNTY, VIRGINIA