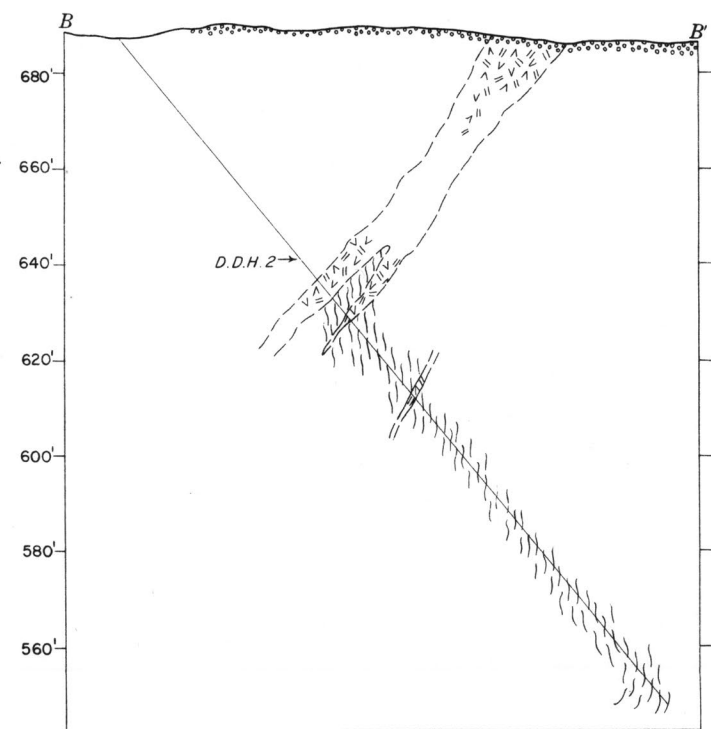


EXPLANATION

- Dump material (in section)
- Massive quartz
- Feldspar-quartz-muscovite pegmatite
- Garnetiferous mica schist
- Contact, showing dip; dashed where approximately located
- Contact between pegmatite units, showing dip
- Limit of exposure
- Strike and dip of foliation
- Shaft
- Rim of open-cut or U. S. Bureau of Mines trench
- Outline of underground workings
- Diamond-drill holes by U. S. Bureau of Mines
- Foot of dump



GEOLOGIC MAP AND SECTIONS OF THE KIDD MINE, TALLAPOOSA COUNTY, ALABAMA

Mapped by E. Wm. Heinrich, December 1944 and February 1945