

115° 32' 30"

30° 00"

35° 30' 00"

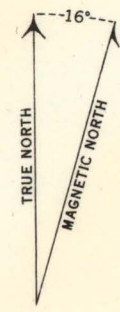
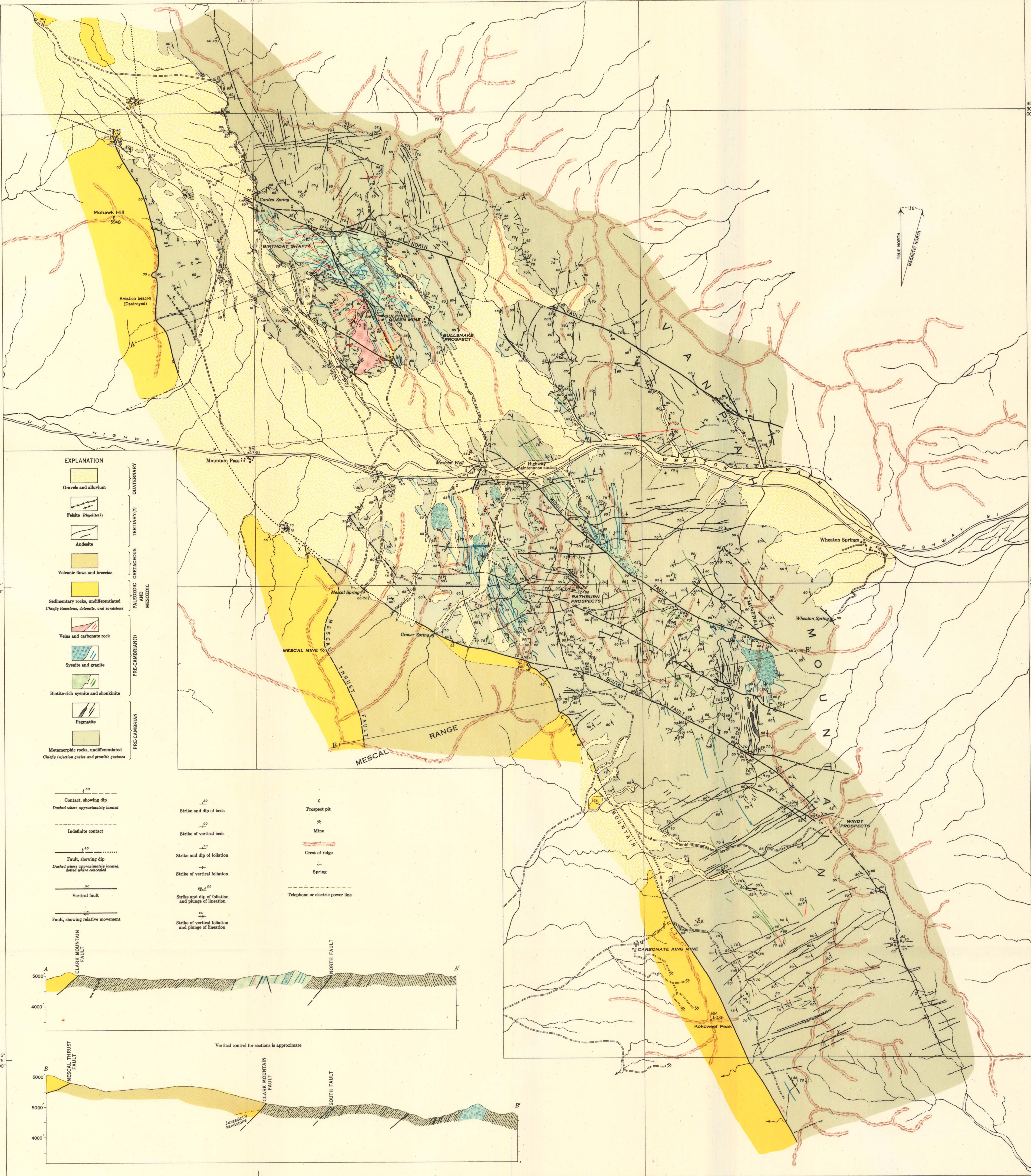
35° 30' 00"

27° 30'

27° 30'

35° 25' 00"

35° 25' 00"

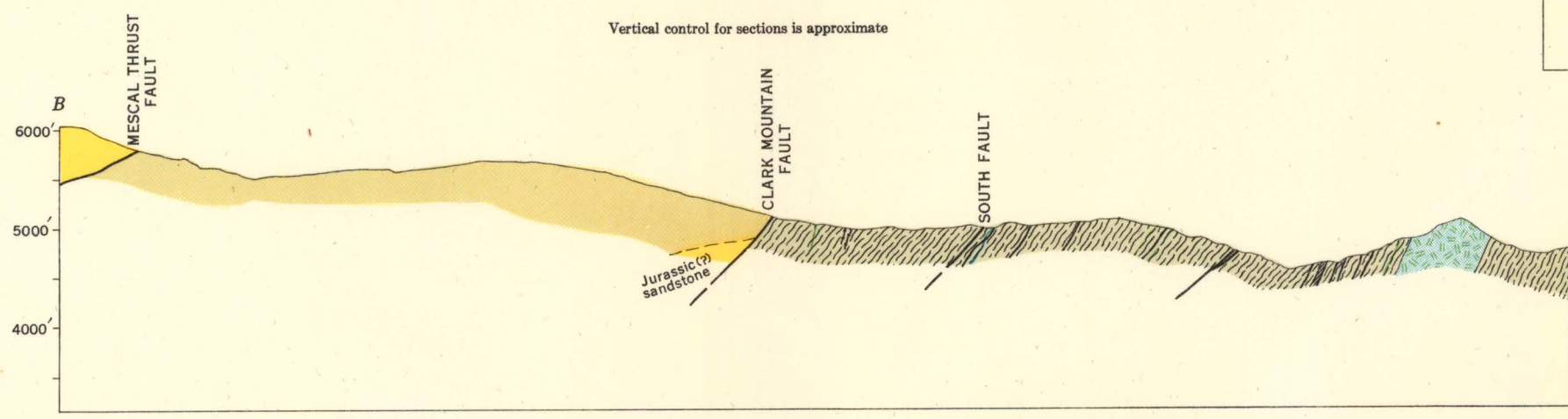
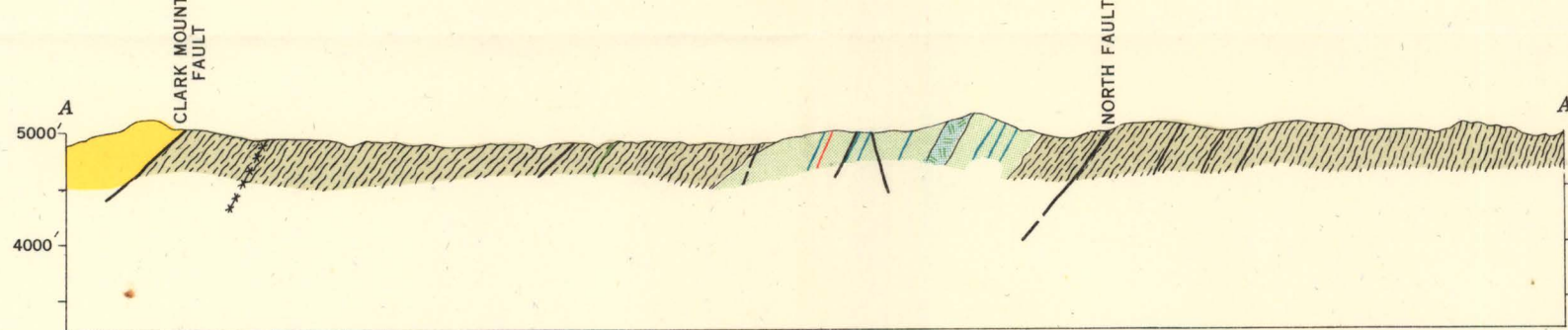


EXPLANATION

- Gravels and alluvium
- Felsite Rhyolite(?)
- Andesite
- Volcanic flows and breccias
- Sedimentary rocks, undifferentiated
Chiefly limestone, dolomite, and sandstone
- Veins and carbonate rock
- Syenite and granite
- Biotite-rich syenite and shonkinite
- Pegmatite
- Metamorphic rocks, undifferentiated
Chiefly injection gneiss and granitic gneisses

QUATERNARY
TERTIARY(?)
CRETACEOUS
MESOZOIC
PALEOZOIC
PRE-CAMBRIAN(?)
PRE-CAMBRIAN

- Contact, showing dip
Dashed where approximately located
- Indefinite contact
- Fault, showing dip
Dashed where approximately located, dotted where concealed
- Vertical fault
- Fault, showing relative movement
- Strike and dip of beds
- Strike of vertical beds
- Strike and dip of foliation
- Strike of vertical foliation
- Strike and dip of foliation and plunge of lineation
- Strike of vertical foliation and plunge of lineation
- Prospect pit
- Mine
- Crest of ridge
- Spring
- Telephone or electric power line



Planimetric base compiled from aerial photographs
by U. S. Geological Survey

115° 32' 30"

30° 00"

INTERIOR-GEOLOGICAL SURVEY, WASHINGTON, D. C.
M-4118

Geology by J. C. Olson, August-November 1950
Geology within 1000 feet of Birthday shaft from
Sharp, W. N., and Pray, L. C., 1952, U. S. Geological
Survey, Mineral Investigations Field Studies Map MF4

GEOLOGIC MAP AND CROSS SECTIONS OF THE MOUNTAIN PASS DISTRICT, SAN BERNARDINO COUNTY, CALIFORNIA

