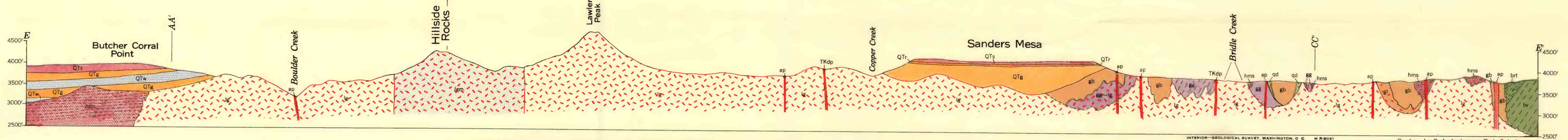


Note: Dashed lines in the intrusive bodies indicate dip of foliation or, in much of the Lawler Peak granite, dip of oriented feldspar crystals



GEOLOGIC SECTIONS OF THE BAGDAD AREA, YAVAPAI COUNTY, ARIZONA

INTERIOR—GEOLOGICAL SURVEY, WASHINGTON, D. C. M. P. 8041

Geology by C. A. Anderson, E. A. Scholz,
and J. D. Strobell, 1943-1945

