

R. 24 E.

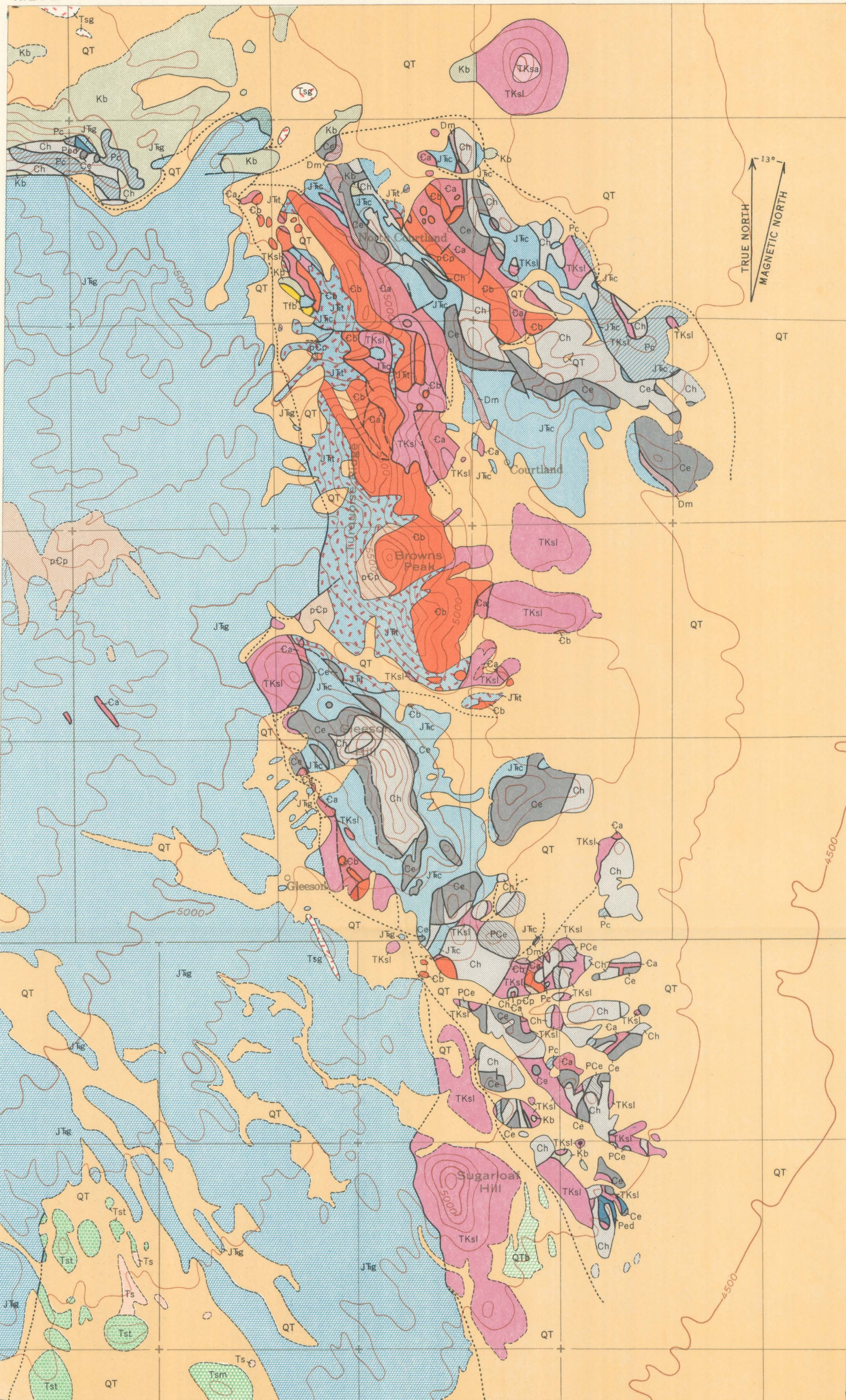
R. 25 E.

T. 19 S.

T. 19 S.

T. 20 S.

T. 20 S.



EXPLANATION

- |   |            |                         |
|---|------------|-------------------------|
|   | QT         | TERTIARY AND QUATERNARY |
| Alluvium  |            |                         |
|   | QTb        | TERTIARY                |
| Basalt porphyry   |            |                         |
|   | Tsm, Tst   | TERTIARY                |
| S O volcanics<br>Tsm, middle andesite member; Tst, lower tuffaceous member    |            |                         |
|   | Ts         | TERTIARY                |
| Prevolcanic sedimentary rocks   |            |                         |
|   | Tsg        | TERTIARY                |
| Stronghold granite and related dikes  |            |                         |
|   | Tfb        | TERTIARY                |
| Fault breccia   |            |                         |
|   | TKsa, TKsl | CRETACEOUS OR TERTIARY  |
| Sugarloaf quartz latite<br>TKsa, andesitic member; TKsl, quartz latite member |            |                         |
|   | Kb         | CRETACEOUS              |
| Bisbee formation  |            |                         |
|   | Jfg        | TRIASSIC OR JURASSIC    |
| Gleeson quartz monzonite  |            |                         |
|   | Jrc        | TRIASSIC OR JURASSIC    |
| Copper Belle monzonite porphyry   |            |                         |
|   | Jrt        | TRIASSIC OR JURASSIC    |
| Turquoise granite   |            |                         |
|   | Ped        | PERMIAN                 |
| Epitaph dolomite  |            |                         |
|   | Pc         | PERMIAN                 |
| Colina limestone  |            |                         |
|   | PCe        | PERMIAN                 |
| Earp formation  |            |                         |
|   | Ch         | CARBONIFEROUS           |
| Horquilla limestone   |            |                         |
|   | Ce         | CARBONIFEROUS           |
| Escabrosa limestone   |            |                         |
|   | Dm         | DEVONIAN                |
| Martin limestone  |            |                         |
|   | Ca         | CAMBRIAN                |
| Abrigo limestone  |            |                         |
|   | Cb         | CAMBRIAN                |
| Bolsa quartzite   |            |                         |
|   | pCp        | PRE-CAMBRIAN            |
| Pinal schist  |            |                         |

Contact  
Dashed where approximately located

Fault  
Dashed where approximately located;  
dotted where concealed

M R-1561

R. 24 E.

R. 25 E.

INTERIOR—GEOLOGICAL SURVEY, WASHINGTON, D. C.

Geology by J. Gilluly and R. S. Cannon, Jr., 1938

GEOLOGIC SKETCH MAP OF THE COURTLAND-GLEESON AREA, ARIZONA

