

SECTION E SECTION F

SECTION F (continued)

SECTION F (continued)

SECTION F (continued)

SECTION G

SECTION F (continued)

SECTION G (continued)

EXPLANATION

LIMESTONE

- Tabular
- Crosslaminated or biohermal
- Nodular or irregular
- Shaly
- Laminated
- Nodular and shaly

SHALE

- Lenticular limestone
- Limestone nodules
- Separian concretions
- Undifferentiated
- Lenticular sandstone

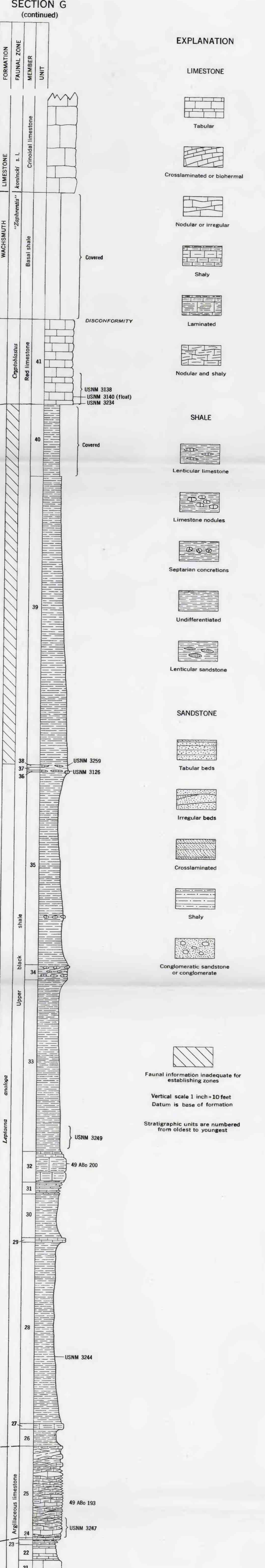
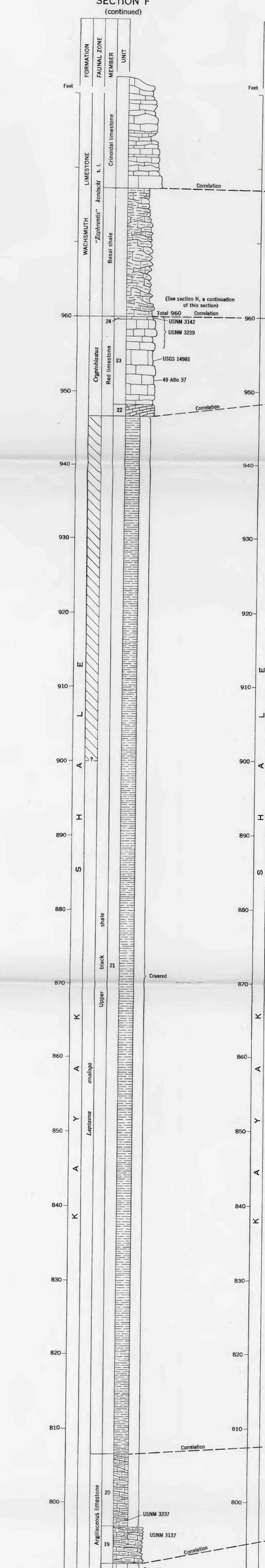
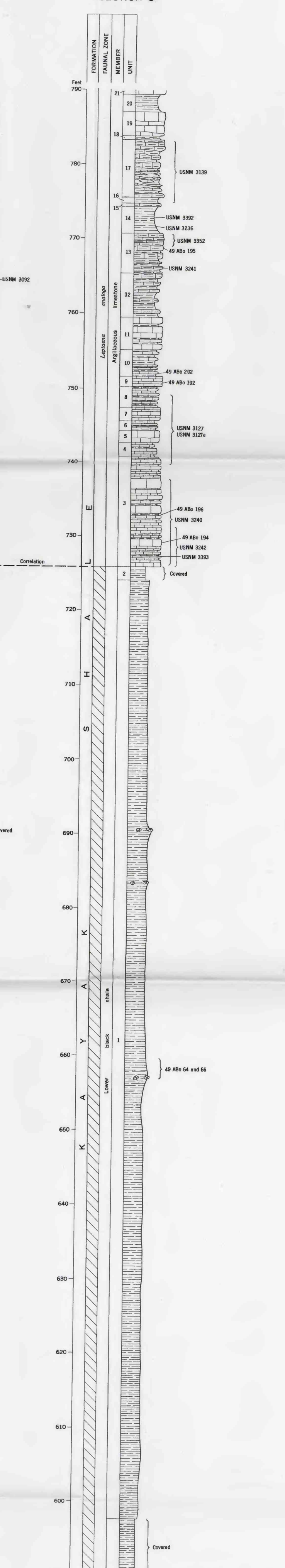
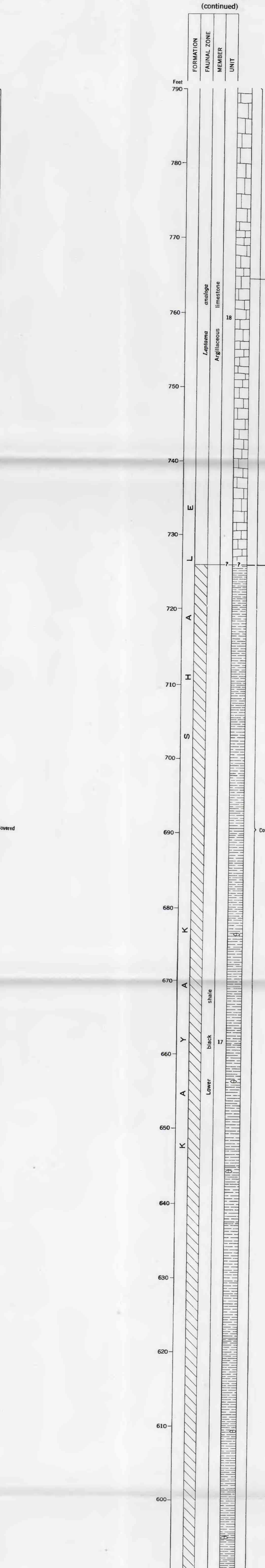
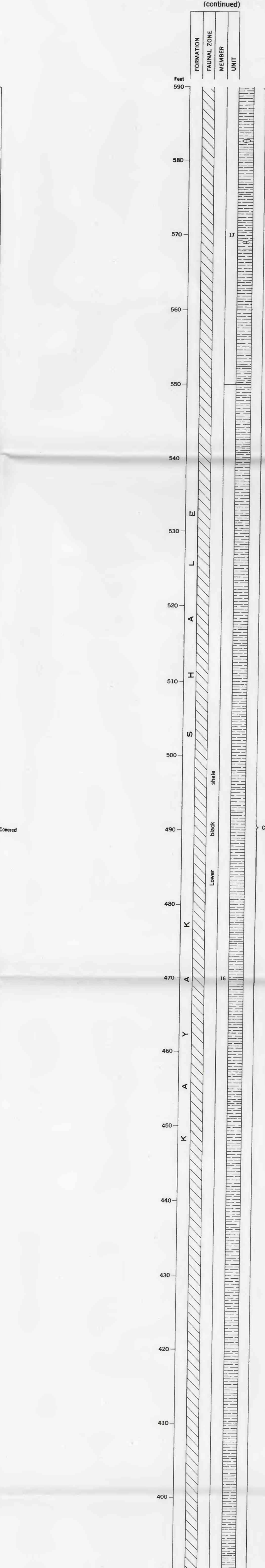
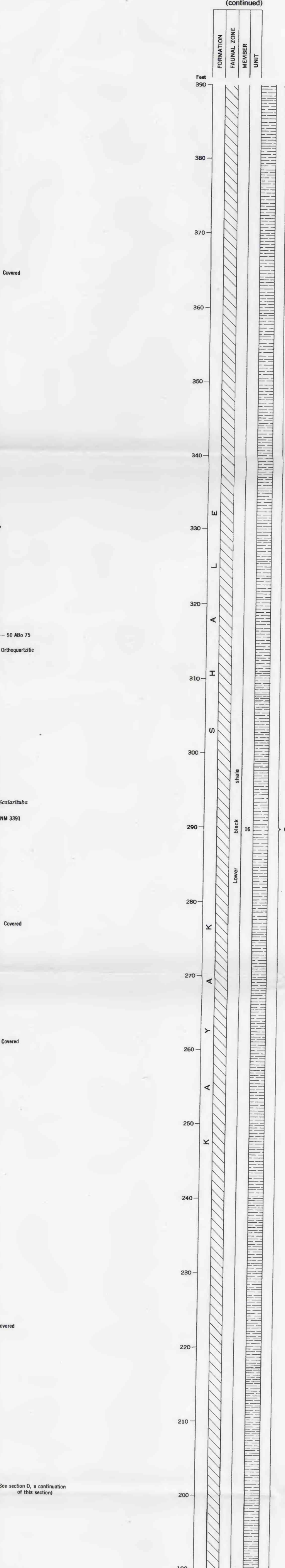
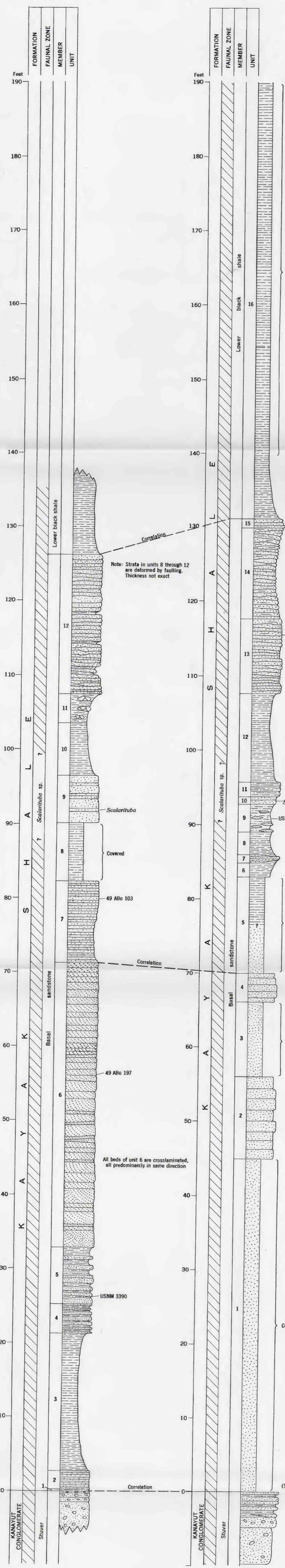
SANDSTONE

- Tabular beds
- Irregular beds
- Crosslaminated
- Shaly
- Conglomeratic sandstone or conglomerate

Faunal information inadequate for establishing zones

Vertical scale 1 inch = 10 feet
Datum is base of formation

Stratigraphic units are numbered from oldest to youngest



GRAPHIC SECTIONS E, F, AND G—KAYAK SHALE, SHAININ LAKE AREA, ALASKA