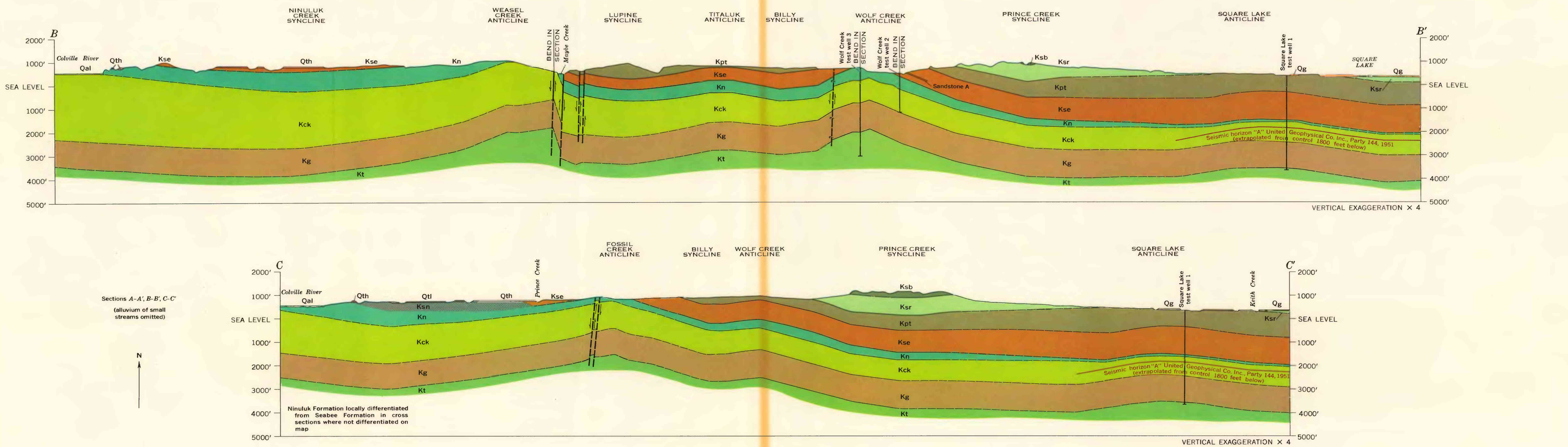


Base map compiled by U.S. Geological Survey 1948-1949

INTERIOR—GEOLOGICAL SURVEY, WASHINGTON, D. C.—1966—G5337

Geology mapped in 1944-53
Geology of wells by F. R. Collins, F. M. Robinson 1956-1959
Quaternary geology and Cretaceous geology of many interstream areas largely from interpretation of aerial photographs
Seismograph Survey by United Geophysical Co., Inc., 1950, 1951



GEOLOGIC MAP AND SECTIONS OF THE UMIAT-MAYBE CREEK REGION, ALASKA