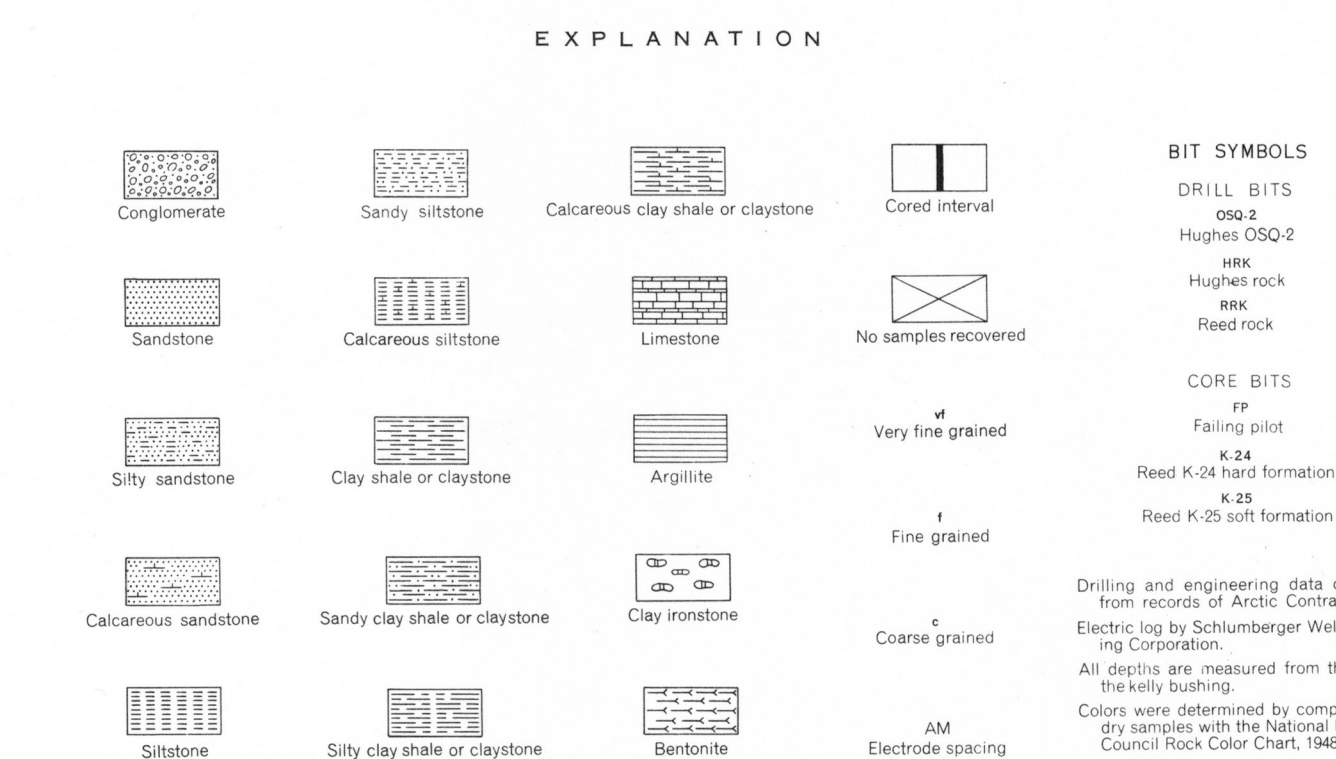


WELL NAME	LOCATION	ELEVATION	SPUDDED	COMPLETED	TOTAL DEPTH	STATUS
BARROW BIG RIG TEST 1	Lat 71°19'44" N Long 156°40'06" W	Kelly bushing 16 feet Ground 8.5 feet	October 13, 1944	October 22, 1944	685 feet	Dry and abandoned
BARROW CORE RIG TEST 1	Lat 71°19'25" N Long 156°39'02" W	Top surface pipe 13 ft. Ground 10.4 feet	September 17, 1944	October 7, 1944	344 feet	Dry and abandoned
BARROW CORE RIG TEST 2	Lat 71°19'00" N Long 156°38'59" W	Swivel head (bot.) 16.75 ft. Ground 13.45 feet	October 9, 1944	October 17, 1944	236 feet	Junked and abandoned
ARCON BARROW CORE TEST 1	Lat 71°19'40" N Long 156°40'01" W	Kelly bushing 18.5 feet Ground 10.5 feet	March 29, 1947	May 3, 1947	1442 feet	Dry and abandoned
SKULL CLIFF CORE TEST 1	Lat 70°54" N Long 158°36" W	Kelly bushing 50 feet Ground 41 feet	February 2, 1947	March 17, 1947	779 feet	Junked and abandoned



GRAPHIC LOGS OF THE CONSTRUCTION BATTALION TEST HOLES ARCON BARROW CORE TEST 1, AND SKULL CLIFF CORE TEST 1

Compiled by Florence R. Collins 1954