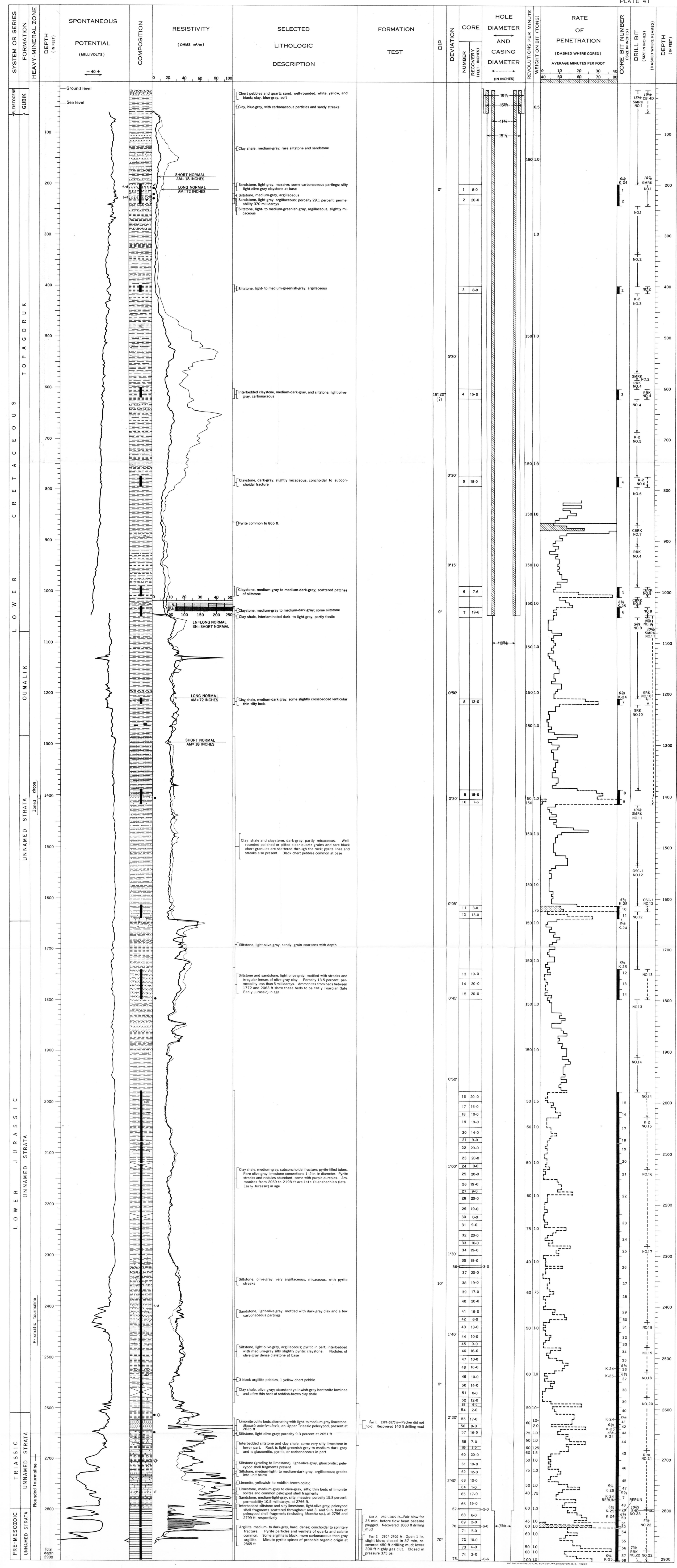
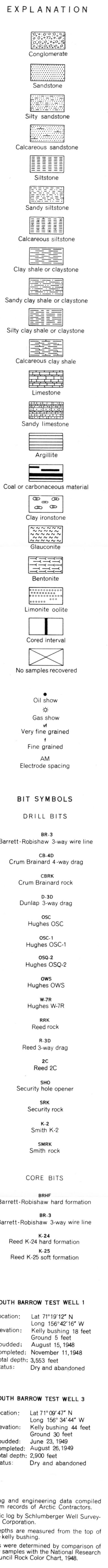


SOUTH BARROW TEST WELL 1



SOUTH BARROW TEST WELL 3



Drilling and engineering data compiled from records of Arctic Contractors Electric Log by Schlumberger Well Surveying Corporation.

All depths are measured from the top of the well casing.

Colors were determined by comparison of dry samples with the National Research Council Rock Color Chart, 1965.

SOUTH BARROW TEST WELL 1
Location: Lat 71°12'12" N, Long 156°46'47" W
Elevation: Kelly building, 18 feet
Spudded: August 15, 1968
Completed: November 1, 1968
Total depth: 2,053 feet
Status: Dry and abandoned

SOUTH BARROW TEST WELL 3
Location: Lat 71°09'47" N, Long 156°46'47" W
Elevation: Kelly building, 44 feet
Spudded: June 25, 1968
Completed: August 30, 1969
Total depth: 2,208 feet
Status: Dry and abandoned

GRAPHIC LOGS OF SOUTH BARROW TEST WELLS 1 AND 3
Compiled by Florence R. Collins, 1964