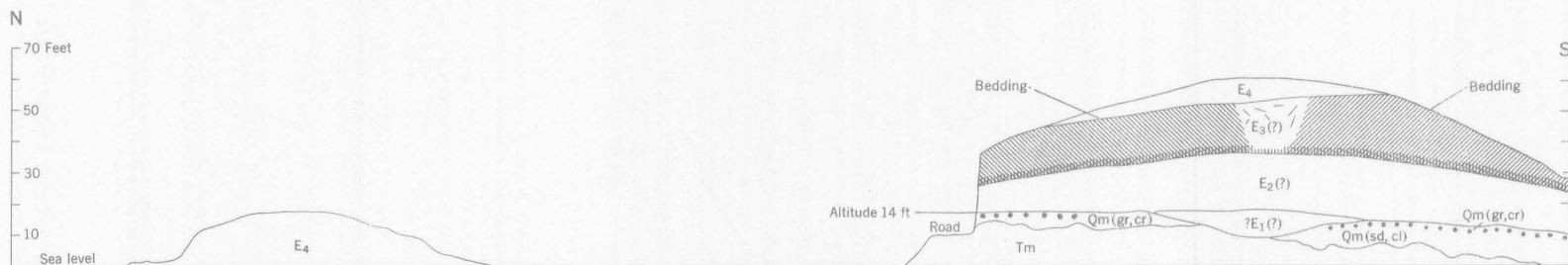
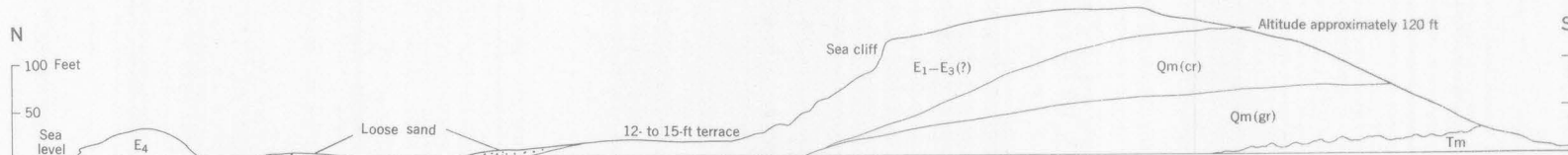


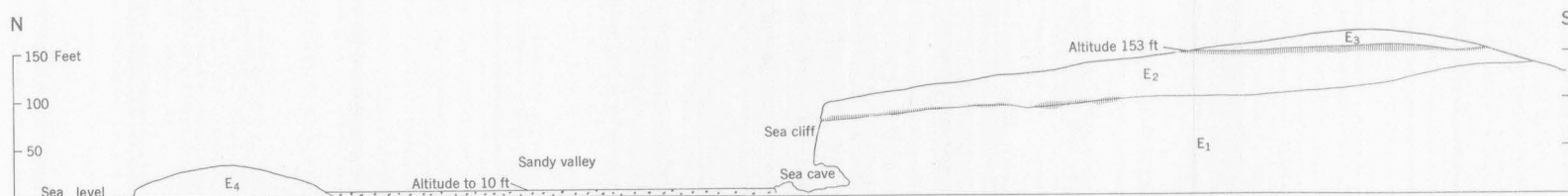
A. THREE MILES WEST OF ARECIBO



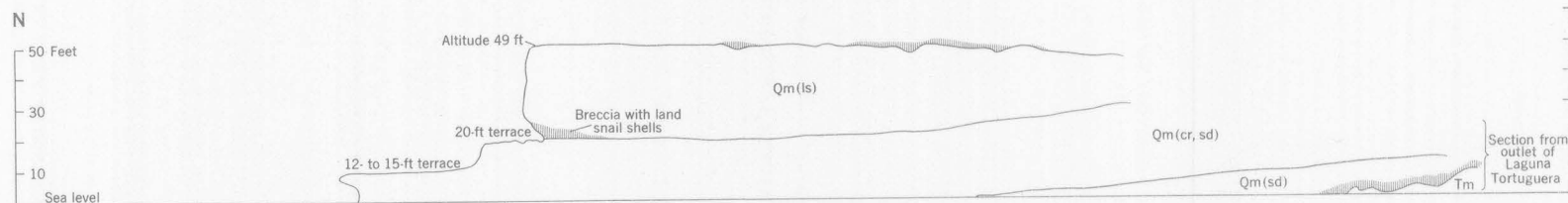
B. PUNTA MORRILLOS TO EL VIGIA (ONE MILE EAST OF ARECIBO)



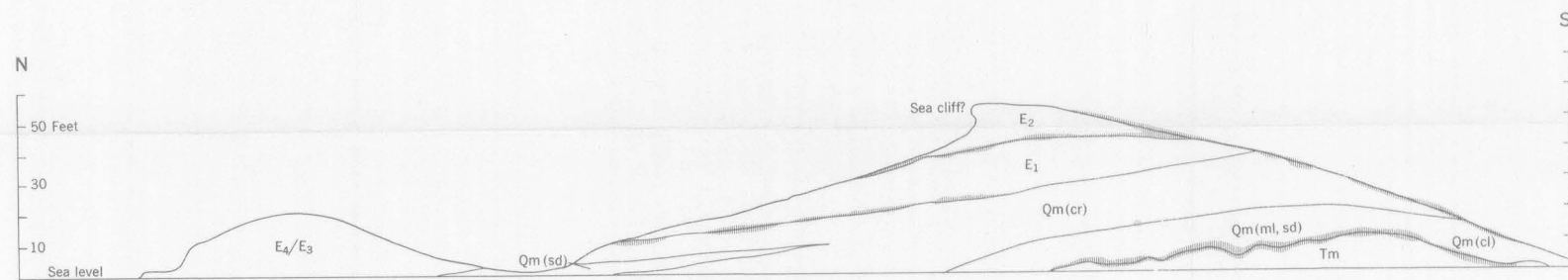
C. PUNTA MANATI



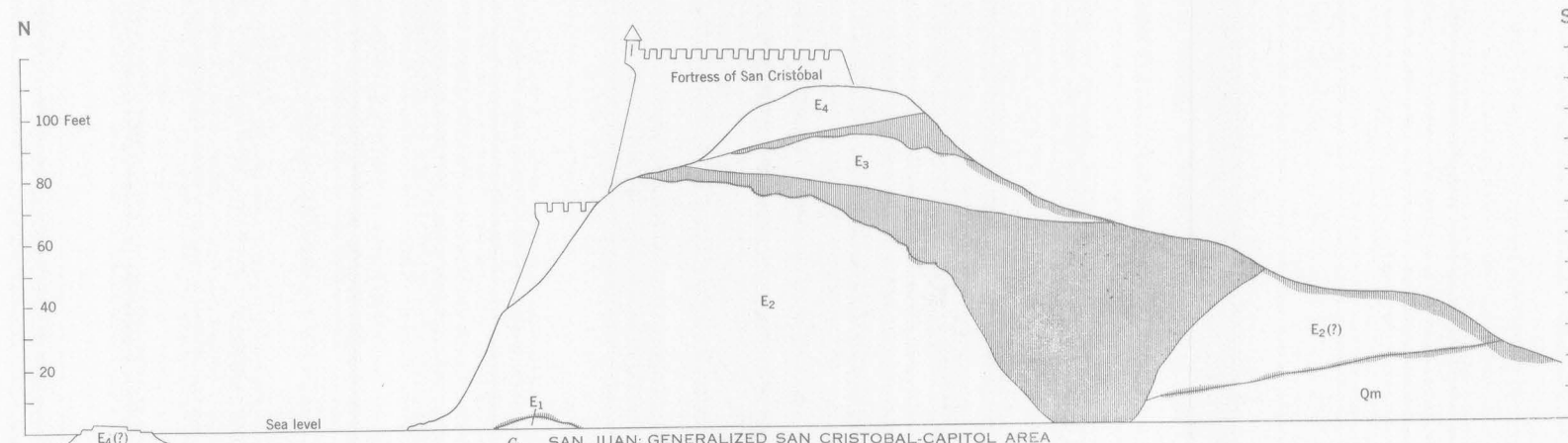
D. PUNTA MALCHIQUITA-LOS MOLINOS (NORTH OF MANATI)



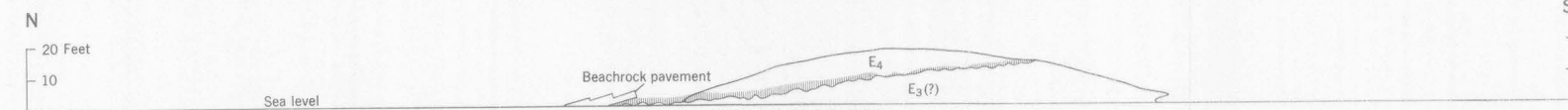
E. PUNTA CHIVATO (TORTUGUERO)



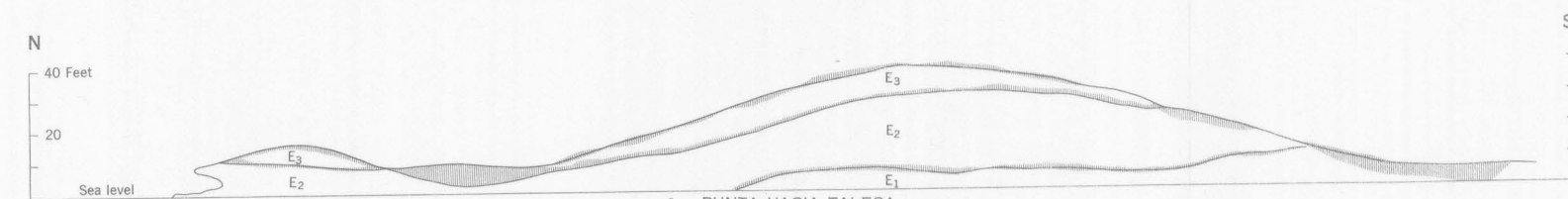
F. PUNTA FRAILE



G. SAN JUAN: GENERALIZED SAN CRISTOBAL-CAPITOL AREA



H. PUNTA MALDONADO



I. PUNTA VACIA TALEGA

EXPLANATION

Various vertical scales; horizontal dimensions not drawn to scale
E₁-E₄, eolianites, oldest to youngest; Qm, Quaternary marine deposits;
(gr) gravel, (sd) sand, (cl) clay, (cr) coral, (ml) marl, (ls) dense
limestone; Tm, lower Miocene sediments; hachures show paleosols

COMPOSITE CROSS SECTION OF SOME NORTH COAST QUATERNARY LOCALITIES, PUERTO RICO