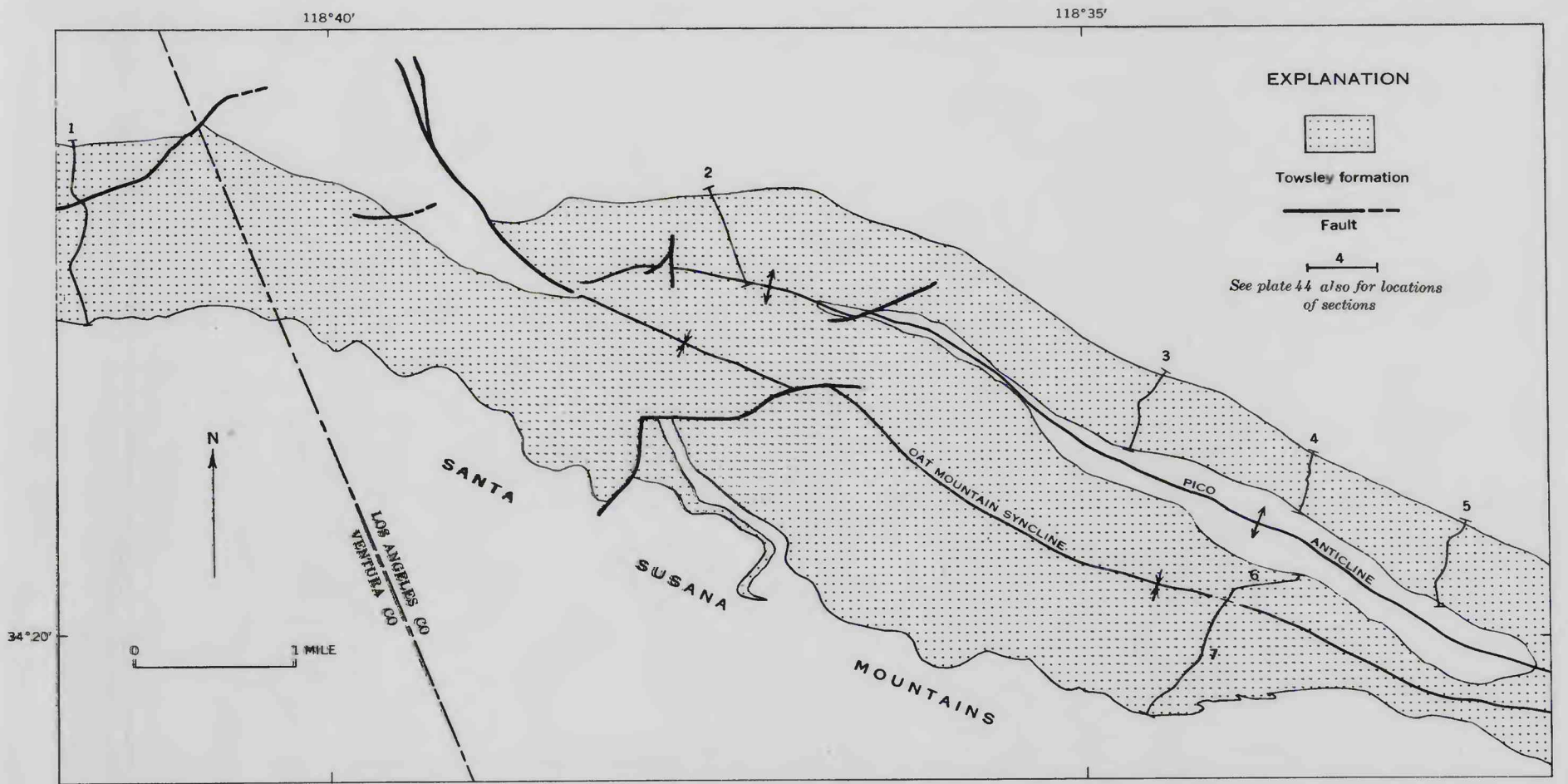
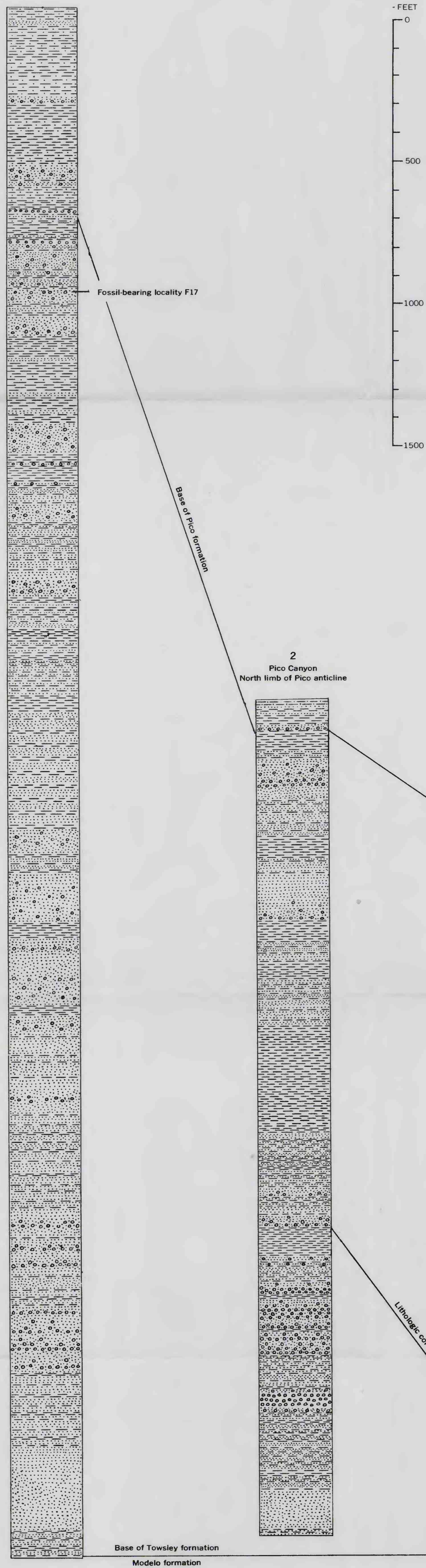


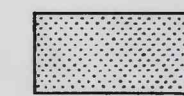
1
Ridge between Tapo and Salt
Canyons west of mapped area in
sec. 31, T. 4 N., R. 17 W. (pro-
jected), and secs. 5 and 6, T. 3 N.,
R. 17 W. (projected)



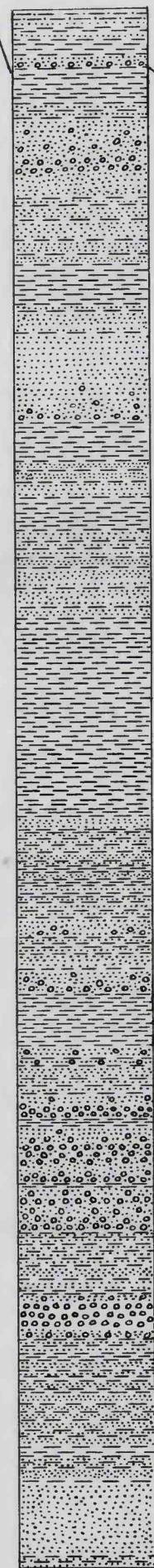
INDEX MAP SHOWING LOCATIONS OF MEASURED SECTIONS

EXPLANATION

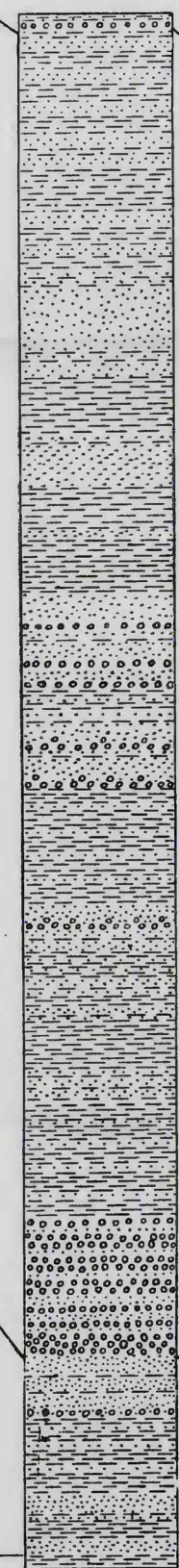
LITHOLOGIC SYMBOLS



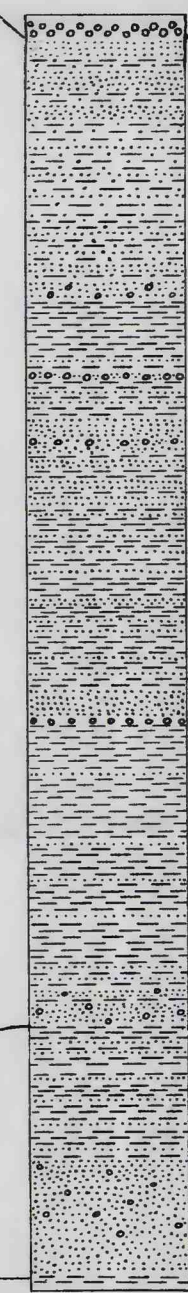
2
Pico Canyon
North limb of Pico anticline



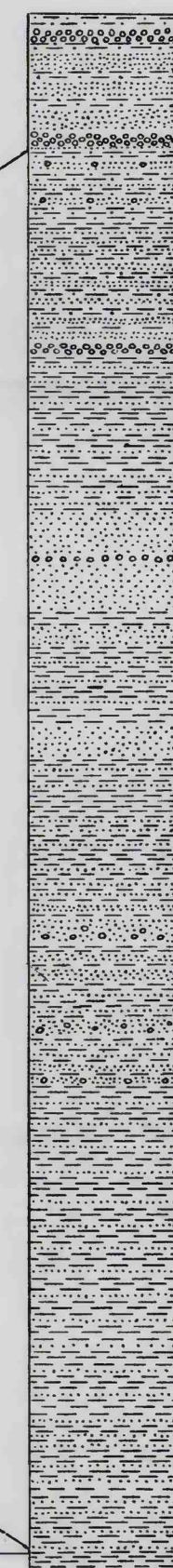
3
Towsley Canyon
North limb of Pico anticline



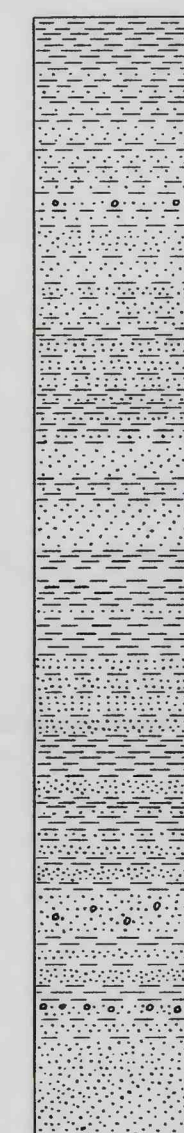
4
Wiley Canyon
North limb of Pico anticline



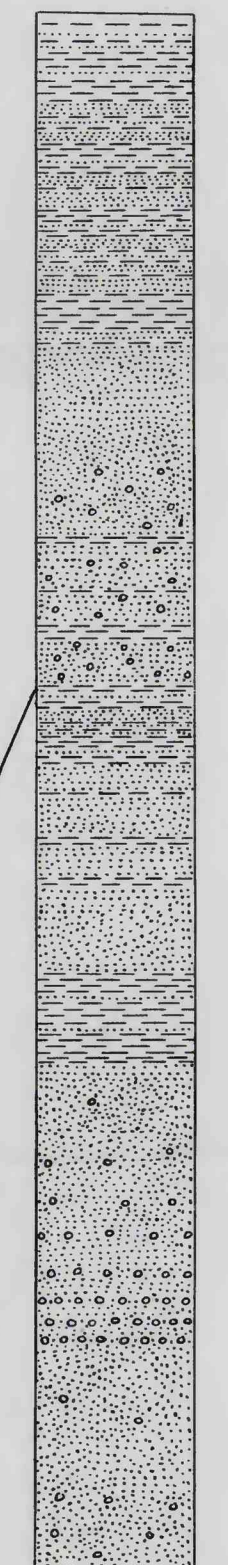
5
East Canyon
North limb of Pico anticline



6
Rice Canyon
North limb of Oat Mountain syncline



7
Rice Canyon
South limb of Oat Mountain syncline



STRATIGRAPHIC SECTIONS IN THE TOWSLEY FORMATION, VENTURA BASIN, LOS ANGELES COUNTY, CALIFORNIA