

78°42'30"

78°40'00"

78°37'30"

78°35'00"

37°15'00"

EXPLANATION

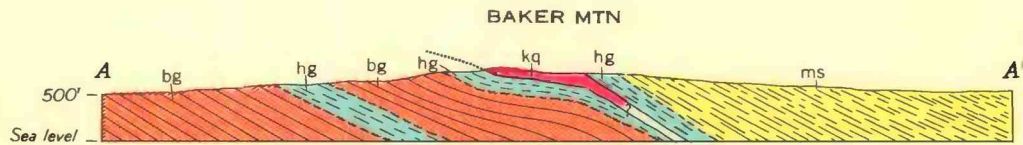
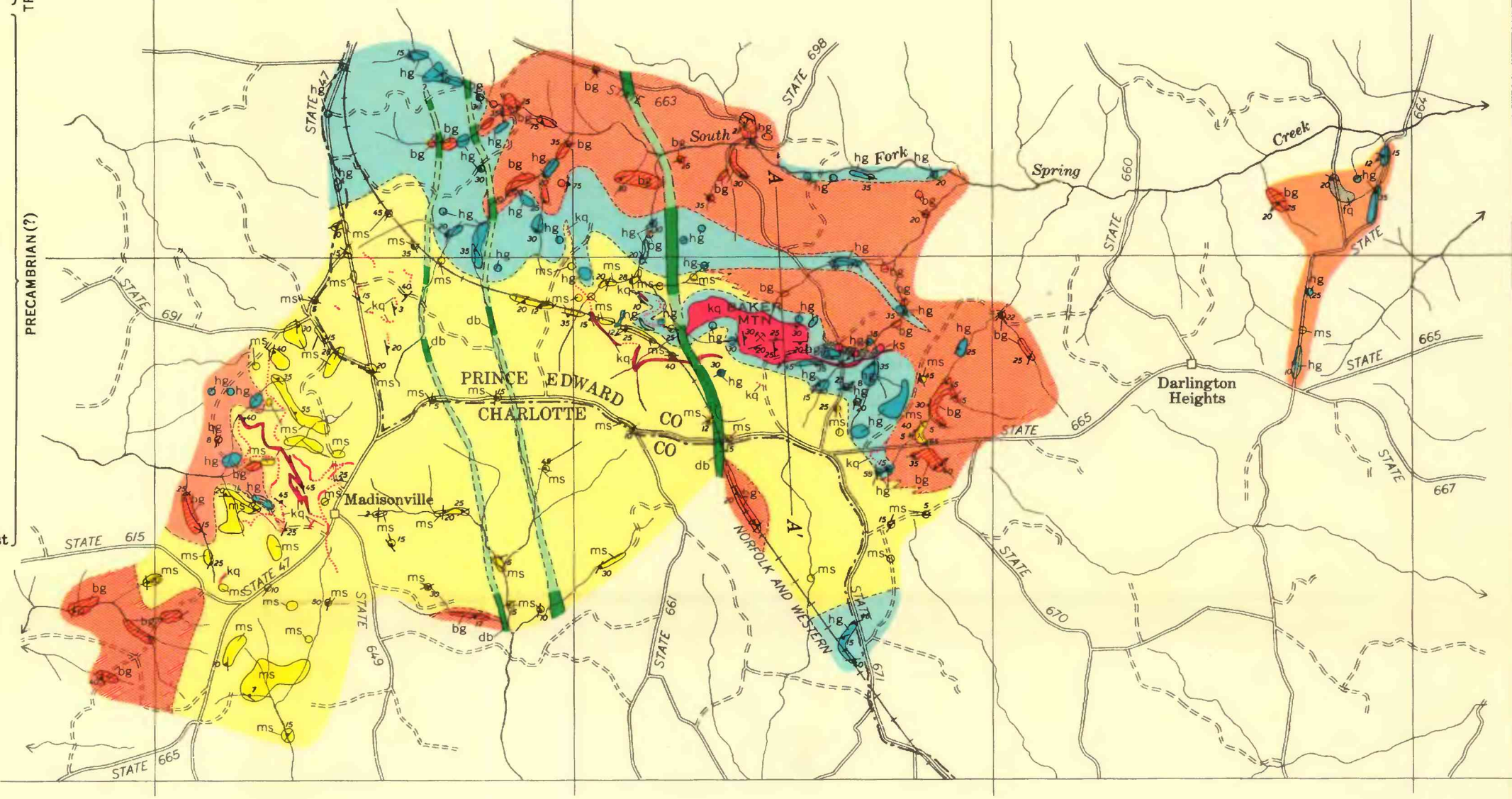
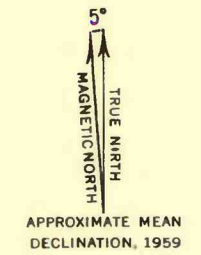
Areas of outcrop and float are shown in heavy color; inferred rock types of unexamined areas, or of areas with scarce outcrops, are shown in light color

Precambrian(?) rocks are not necessarily in strict stratigraphic order because of repetition of lithologic units; see fig. 28 for stratigraphic relations

- db
Diabase
- fq
Ferruginous quartz rock
- hg
Hornblende gneiss
- kq
Kyanite quartzite
Dotted where less than 5 feet thick
- ks
Kyanite schist
- ms
Muscovite-quartz schist
- bg
Biotite gneiss
- Undifferentiated gneiss and schist
- Area of outcrop
- Contact
Long dashes where approximately located, short dashes where inferred
- Strike and dip of foliation
- Bearing and plunge of lineation
- Strike and dip of foliation and plunge of lineation
- Horizontal lineation
- Mine

TRIASSIC

PRECAMBRIAN(?)



Map compiled by U. S. Geological Survey from aerial photographs

INTERIOR—GEOLOGICAL SURVEY, WASHINGTON, D. C. MR 7607

Geology by G. H. Espenshade and D. B. Potter, 1950-52

GEOLOGIC MAP OF THE BAKER MOUNTAIN-MADISONVILLE AREA
PRINCE EDWARD AND CHARLOTTE COUNTIES, VIRGINIA

