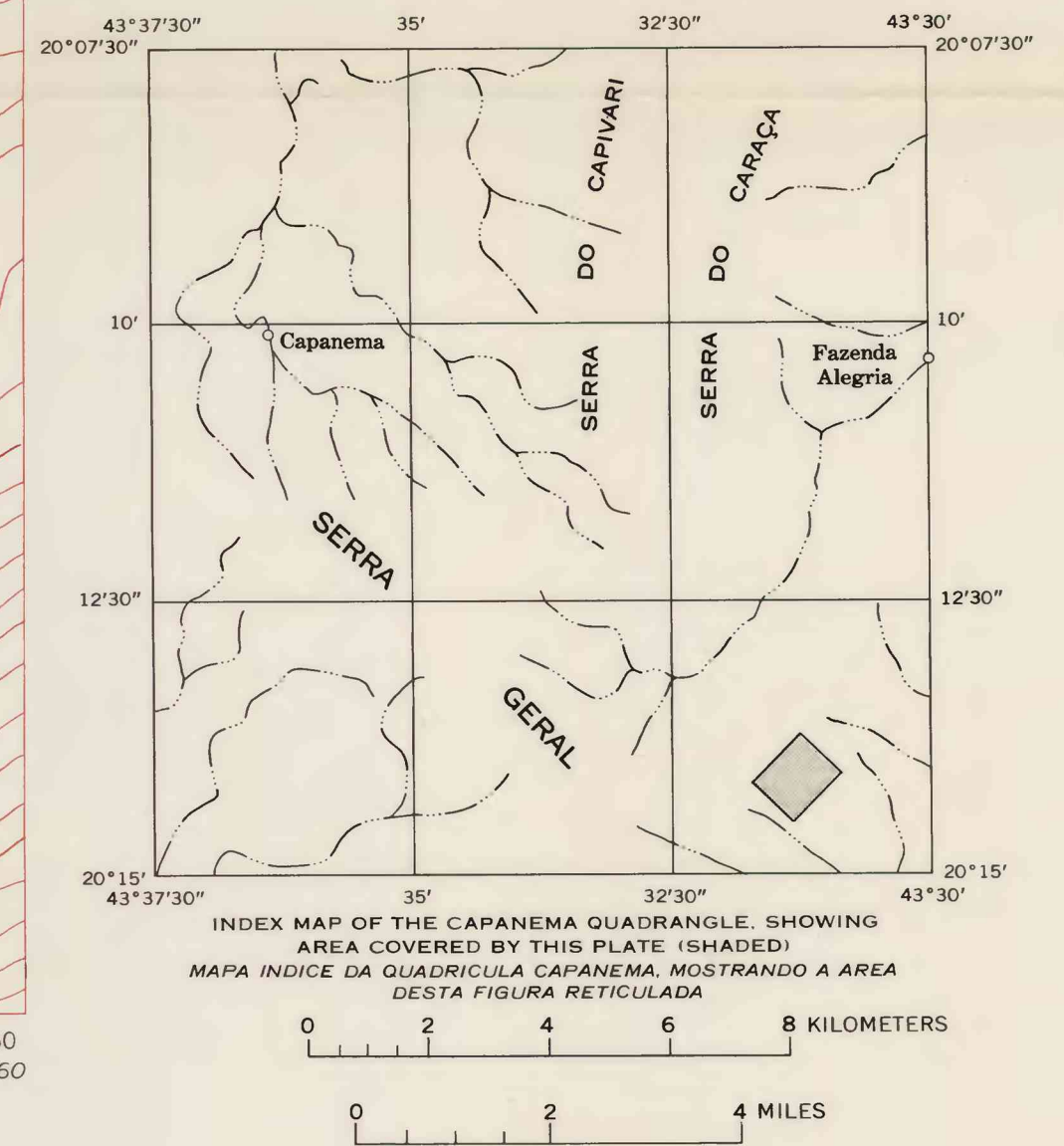


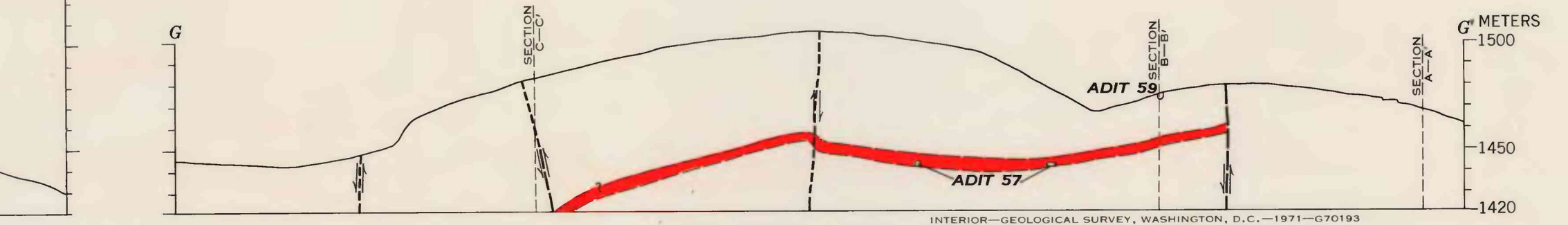
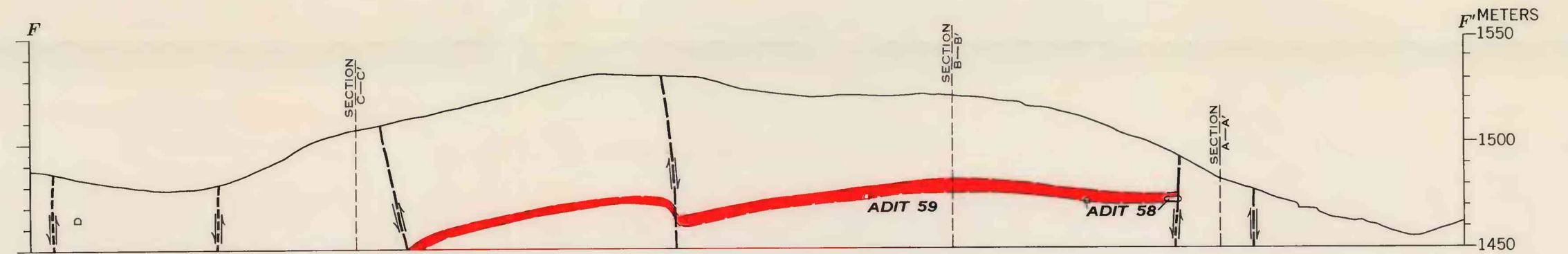
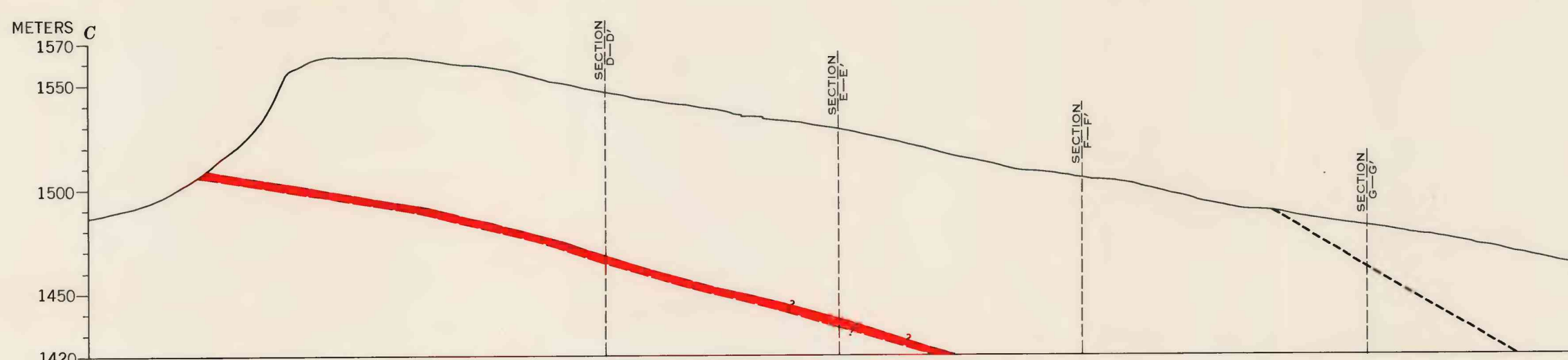
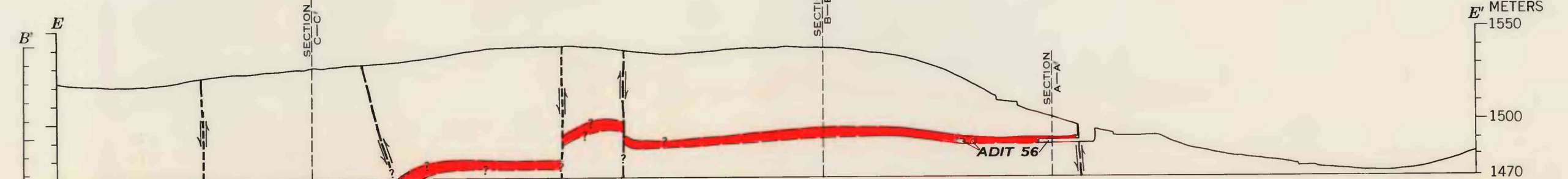
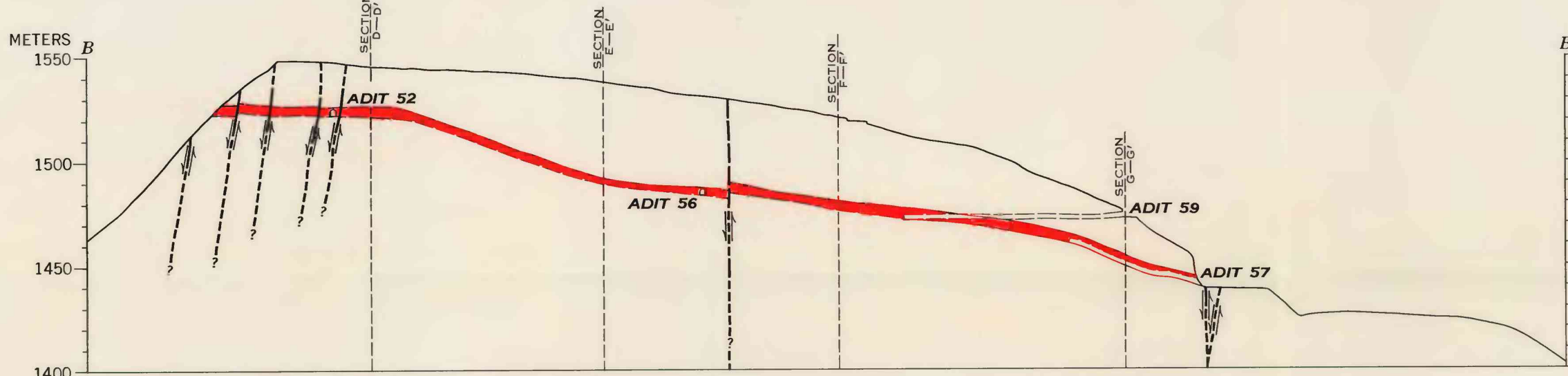
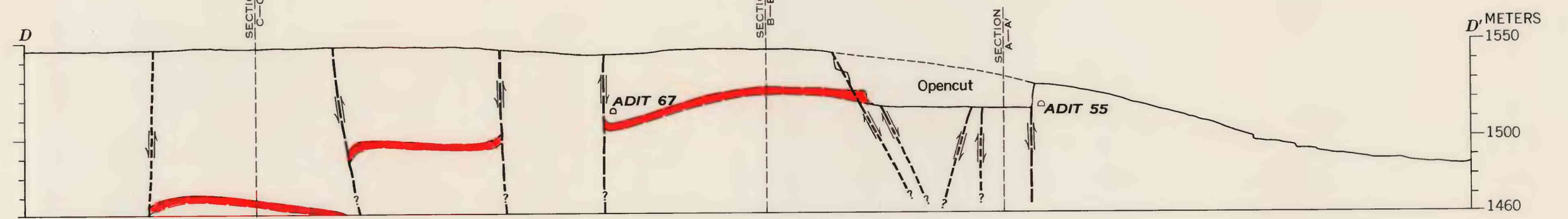
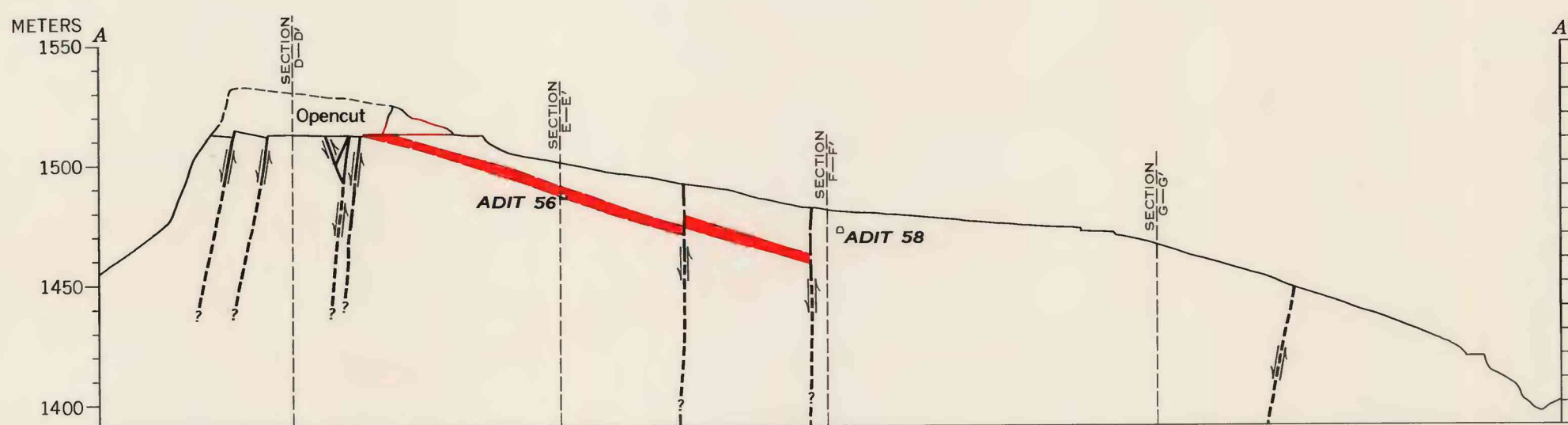
EXPLANATION  
CONVENÇÕES

- Limit of outcrop of manganese ore bed, dashed where inferred  
*Limite do afloramento da camada de minério de manganês, traçado onde inferido*
- Fault, showing dip; dashed where approximately located or inferred, queried where doubtful  
*Falha, mostrando mergulho; traçado onde estiver locada aproximadamente ou inferido, interrogado onde incerto, U, lado levantado; D, lado baixado*
- Strike and dip of bed  
*Direção e mergulho das camadas*
- Plunge of drag fold axis  
*Caimento de eixo de dobra de arrasta*
- Edge of opencut  
*Corte de céu aberto*
- Adit and number; showing approximate extent of underground workings  
*Galeria e número; mostrando extensão aproximada das galerias. Locação da camada do manganês dentro das galerias em vermelho*
- Trench  
*Trincheira*
- Shaft or prospect pit  
*Poço ou poço de prospecção*
- Diamond-drill hole and number  
*Furo de sonda a diamante e número*

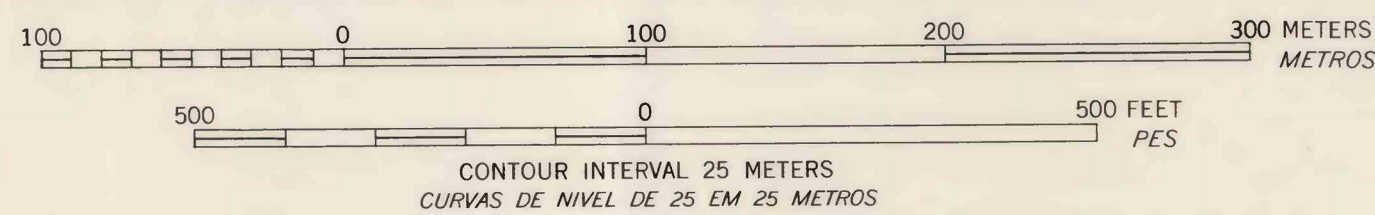


Topographic map by Cia. Siderúrgica Belgo-Mineira  
*Levantamento topográfico por Cia. Siderúrgica Belgo-Mineira*

Geology by Charles H. Maxwell, 1960  
*Geologia por Charles H. Maxwell, 1960*



GEOLOGIC MAP AND GENERALIZED CROSS SECTIONS OF THE MANGANESE MINES AT CONTA HISTÓRIA, BRAZIL  
MAPA GEOLÓGICO E PERFIS GENERALIZADOS DAS MINAS DE MANGANÊS EM CONTA HISTÓRIA, BRASIL



MAP PREPARED UNDER THE AUSPICES OF THE UNITED STATES—BRAZIL TECHNICAL COOPERATION PROGRAM  
MAPA PREPARADO SOB OS AUSPÍCIOS DO PROGRAMA DE COOPERAÇÃO TÉCNICA, BRASIL—ESTADOS UNIDOS