

EXPLANATION

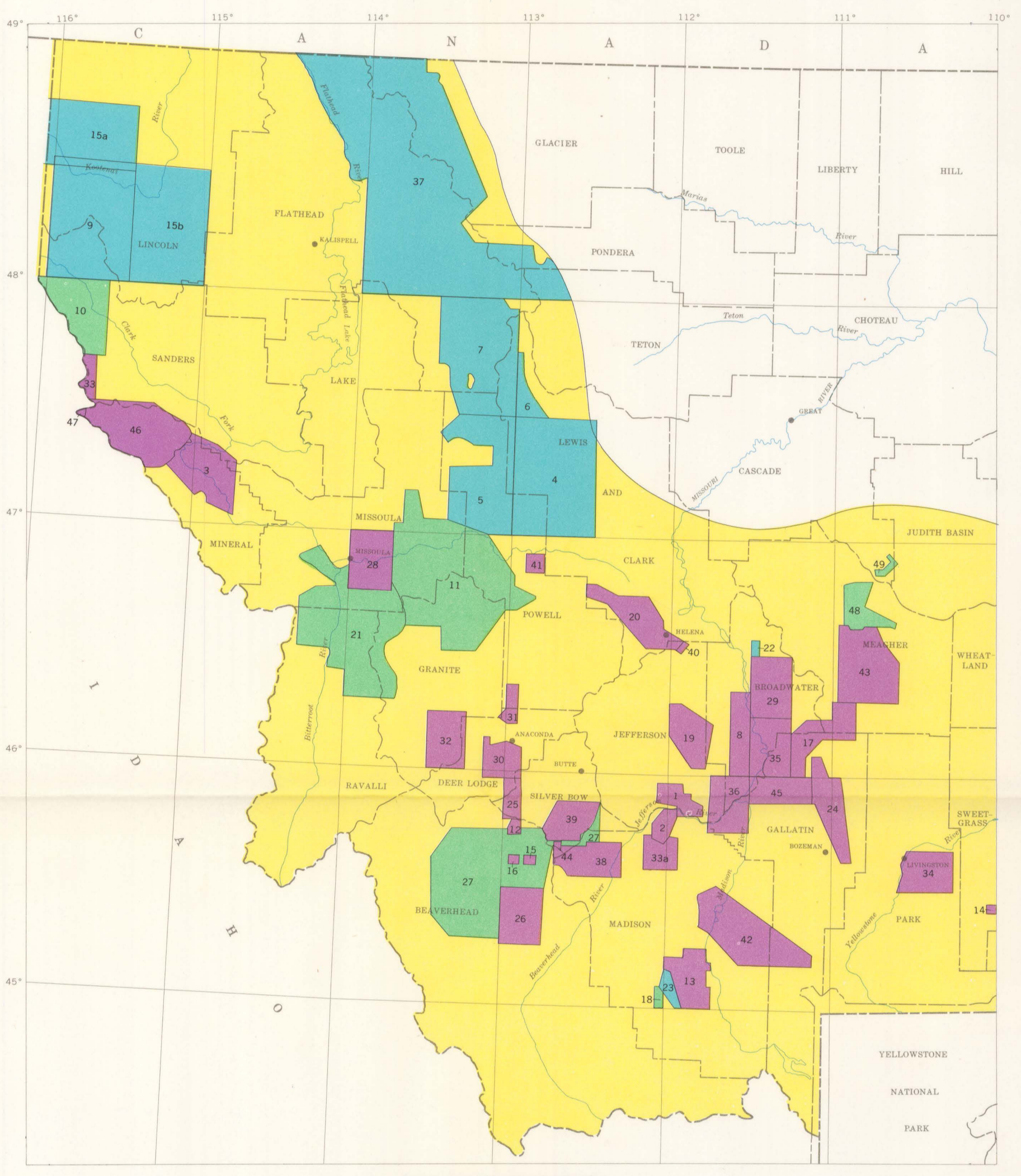
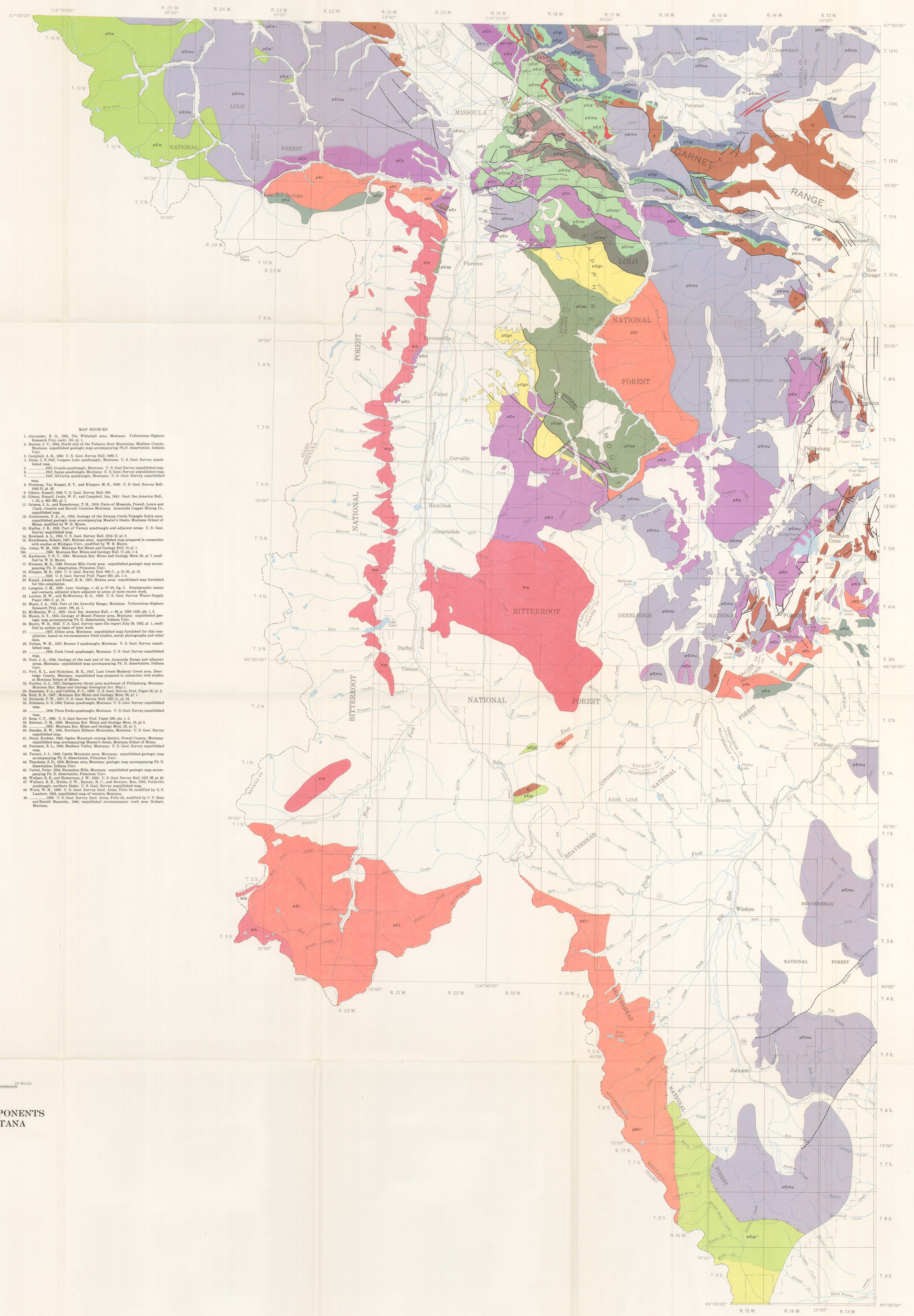
Contact
Dashed where approximately located or inferred
Contact supplied by compiler
Recommendations of authors of adjacent areas
used where available

Fault
Character not designated; dashed where approximately located or inferred, dotted where concealed by post-Cambrian sediments

Thrust fault
T, upper plate

Fault added by compiler
Recommendations of authors of adjacent areas
used where available

Wherever possible, the author of new work was consulted about problems of adjusting old material outside the limits of his work. Compiler's symbols have been used to incorporate this information into the map.



- MAP SOURCES**
1. Alexander, R. G., 1905. The "Belt" area, Montana. Yellowstone-Highern Research Proj. ser. 19, p. 1.
 2. Barrow, J. V., 1914. North end of the Tobacco Root Mountains, Madison County, Montana: unpublished geologic map accompanying Ph.D. dissertation, Indiana Univ.
 3. Campbell, A. B., 1906. U. S. Geol. Survey Bull. 1982-3.
 4. Deane, C. I., 1941. Copper Lake quadrangle, Montana. U. S. Geol. Survey unpublished map.
 5. ———, 1947. Oriskany quadrangle, Montana. U. S. Geol. Survey unpublished map.
 6. ———, 1957. Sappo quadrangle, Montana. U. S. Geol. Survey unpublished map.
 7. ———, 1947. Silvertip quadrangle, Montana. U. S. Geol. Survey unpublished map.
 8. Freeman, Val, Ruppel, E. T., and Klepper, M. R., 1958. U. S. Geol. Survey Bull. 1045-N, 45.
 9. Gibson, Russell, 1945. U. S. Geol. Survey Bull. 624.
 10. Gibson, Russell, Joshi, W. P., and Campbell, I. A., 1941. Geol. Soc. America Bull., v. 52, p. 363-383, pl. 1.
 11. Gibson, Russell, and Rosenkrantz, T. H., 1933. Parts of Missoula, Powell, Lewis and Clark, and Bitterroot Counties, Montana. American Copper Mining Co., unpublished map.
 12. Gifford, F. R., ed., 1931. Geology of the Swanee Creek-Triangular Gulch area: unpublished geologic map accompanying Master's thesis, Montana School of Mines, modified by W. H. Myers.
 13. Hadley, J. B., 1938. Part of Varney quadrangle and adjacent areas: U. S. Geol. Survey unpublished map.
 14. Howard, A. L., 1955. U. S. Geol. Survey Bull. 1044-D, pl. 4.
 15. Hutchinson, Robert, 1947. Malheur area: unpublished map prepared in connection with studies at Michigan Univ., modified by E. S. Jones.
 16. John, W. M., 1939. Montana Bar Mines and Geology Bull. 11, pl. 1.
 17. ———, 1940. Montana Bar Mines and Geology Bull. 11, pl. 1.
 18. Karlstrom, T. S. V., 1948. Montana Bar Mines and Geology Mem. 35, pl. 1, modified by W. H. Myers.
 19. Klemme, M. D., 1948. Sixteen Mile Creek area: unpublished geologic map accompanying Ph.D. dissertation, Princeton Univ.
 20. Klepper, M. R., 1959. U. S. Geol. Survey Bull. 948-C, p. 44-45, pl. 14.
 21. ———, 1966. U. S. Geol. Survey Prof. Paper 729, pl. 1, 2.
 22. Kopf, Adolph, and Kopf, E. R., 1931. Malheur area: unpublished map furnished to the compiler.
 23. Kopf, Adolph, and Kopf, E. R., 1931. Malheur area: unpublished map furnished to the compiler, adjacent where adjacent to areas of more recent work.
 24. Larson, B. W., and McArthur, E. G., 1956. U. S. Geol. Survey Water-Supply Paper 1580-C, pl. 2.
 25. Mays, J. A., 1934. Part of the Gravelly Range, Montana. Yellowstone-Highern Research Proj. ser. 19, p. 1.
 26. McKenna, W. C., 1955. Geol. Soc. America Bull., v. 66, p. 1385-1430, pls. 1, 2.
 27. Moore, G. T., 1955. Geology of Mount Pleasant area, Montana: unpublished geologic map accompanying Ph.D. dissertation, Indiana Univ.
 28. Myers, W. H., 1951. U. S. Geol. Survey open file report 7-10, p. 1, modified by author on basis of later work.
 29. ———, 1957. Dillon area, Montana: unpublished map furnished to the compiler; based on reconnaissance field studies, aerial photographs and other data.
 30. Nelson, W. H., 1937. Bonner 2 quadrangle, Montana. U. S. Geol. Survey unpublished map.
 31. Noel, J. A., 1954. Geology of the east end of the Anconite Range and adjacent areas, Montana: unpublished map accompanying Ph.D. dissertation, Indiana Univ.
 32. Pott, E. L., and Nicholson, H. E., 1947. Lost Creek-Moody Creek area, Deer Lodge County, Montana: unpublished map prepared in connection with studies at Montana School of Mines.
 33. Postler, C. J., 1957. Geopressure-therm area southwest of Philipsburg, Montana Bar Mines and Geology Geographical Map 1.
 34. Rossmore, F. J., and Collins, F. C., 1955. U. S. Geol. Survey Prof. Paper 62, pl. 2.
 35. Sells, R. B., 1955. Montana Bar Mines and Geology Mem. 35, pl. 1.
 36. Richards, J. W., 1937. U. S. Geol. Survey Bull. 1021-A, pl. 14.
 37. Robinson, G. D., 1954. Teton quadrangle, Montana. U. S. Geol. Survey unpublished map.
 38. ———, 1956. Three Forks quadrangle, Montana. U. S. Geol. Survey unpublished map.
 39. Rose, C. F., 1960. U. S. Geol. Survey Prof. Paper 296, pl. 1, 2.
 40. Sabinin, V. M., 1959. Montana Bar Mines and Geology Mem. 35, pl. 1.
 41. ———, 1960. Montana Bar Mines and Geology Mem. 35, pl. 1.
 42. Jensen, B. H., 1951. Northern Elkmore Mountains, Montana: U. S. Geol. Survey unpublished map.
 43. Jones, E. S., 1951. Opfers Mountain mining district, Powell County, Montana: unpublished map accompanying Master's thesis, Montana School of Mines.
 44. Swanson, E. S., 1948. Malheur Valley, Montana. U. S. Geol. Survey unpublished map.
 45. Tanner, J. J., 1949. Castle Mountains area, Montana: unpublished geologic map accompanying Ph.D. dissertation, Princeton Univ.
 46. Throckmold, D. D., 1954. Malheur area, Montana: geologic map accompanying Ph.D. dissertation, Princeton Univ.
 47. Verret, Peter, 1954. Horsehoe Hills, Montana: unpublished geologic map accompanying Ph.D. dissertation, Princeton Univ.
 48. Walker, E. E., and Eastman, J. W., 1950. U. S. Geol. Survey Bull. 1027-M, pl. 48.
 49. Walker, E. E., Stiles, S. W., Ealeny, H. C., and Sawyer, Eben, 1950. Patricia quadrangle, northern Idaho: U. S. Geol. Survey unpublished map.
 50. Ward, W. H., 1939. U. S. Geol. Survey Geol. Atlas, Folio 6, modified by G. S. Lambert, 1954, unpublished map of western Montana.
 51. ———, 1939. U. S. Geol. Survey Geol. Atlas, Folio 6, modified by C. F. Rose and Harold Mankly, 1946, unpublished reconnaissance work near Nehalem, Montana.

EXPLANATION FOR SOURCE MAP

Areas shown in purple represent mapping at a scale of 1:125,000 or larger.

Areas shown in blue represent mapping at scale between 1:125,000 and 1:62,500.

Areas shown in green represent mapping at scale smaller than 1:125,000.

Areas shown in yellow are those based directly on the Montana State Map, 1953, by Rose, C. F., Andrews, D. A., and Walker, J. J.

MAP SHOWING DISTRIBUTION OF THE COMPONENTS OF THE BELT SERIES IN WESTERN MONTANA
Compiled by
Betty A. L. Skipp

