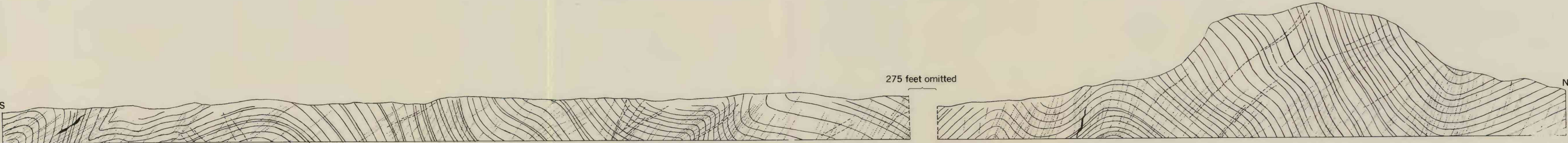
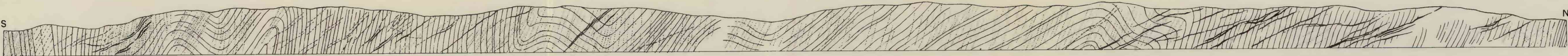




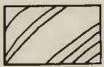
A. ON U.S. HIGHWAY 411-441, 5 MILES WEST OF SEVIERVILLE AND A QUARTER OF A MILE SOUTHWEST OF ZION HILL CHURCH, WALDEN CREEK QUADRANGLE. TELLICO FORMATION;
PLATY CALCAREOUS SHALE, WITH SOME THICKER SILTY AND SANDY BEDS. BY R. B. NEUMAN, 1951



B. COVE CREEK ROAD AT COVE CREEK CASCADES, SECTION ENDING ON NORTH AT BRIDGE OVER COVE CREEK; PIGEON FORGE QUADRANGLE. WILHITE FORMATION
LAMINATED SILTSTONE WITH SOME BEDS OF FINE-GRAINED SANDSTONE AND OF SLATE. BY P. B. KING, 1948



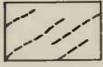
C. U.S. HIGHWAY 441 ON WEST SIDE OF WEST PRONG OF LITTLE PIGEON RIVER, 2½ MILES NORTH OF GATLINBURG, NORTH END OF SECTION ENDING A LITTLE SOUTH OF MOUTH OF
KING BRANCH; PIGEON FORGE QUADRANGLE. PIGEON SILTSTONE, CHLORITIC, THIN- TO THICK BEDDED. BY P. B. KING, 1948



Bedding surfaces



Slaty cleavage or fracture
cleavage
Commonly nearly parallel to axial
planes of folds; ranging from
incipient fracture cleavage in A
to pervasive slaty cleavage in C



Joints and tight fractures



Open fractures, gashes, and
minor thrusts
In B, filled by vein quartz

ROADCUT SECTIONS SHOWING DETAILS OF FOLDING, CLEAVAGE, AND OTHER STRUCTURES IN ROCKS
OF APPALACHIAN VALLEY AND NORTHERN FOOTHILLS OF GREAT SMOKY MOUNTAINS

