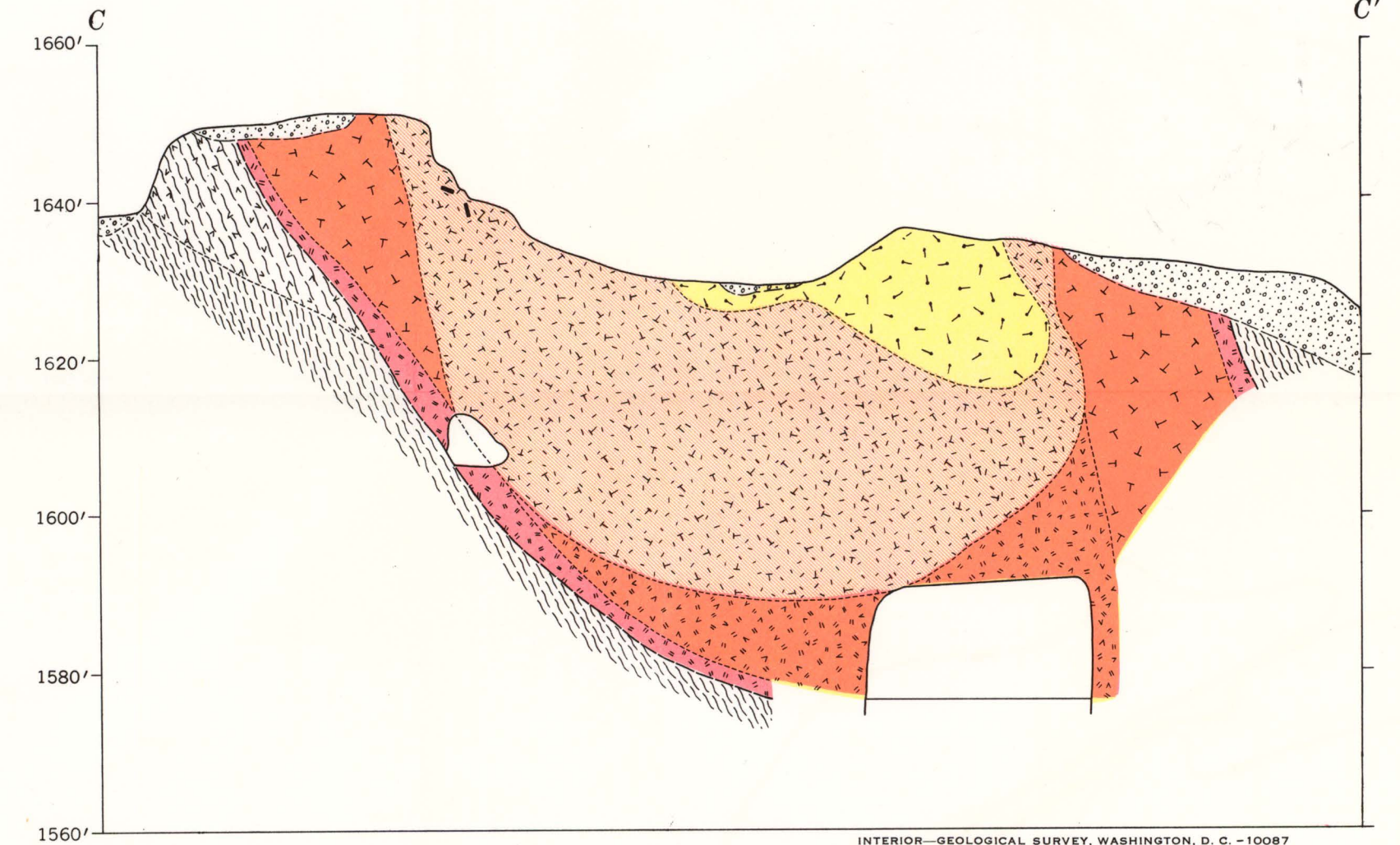
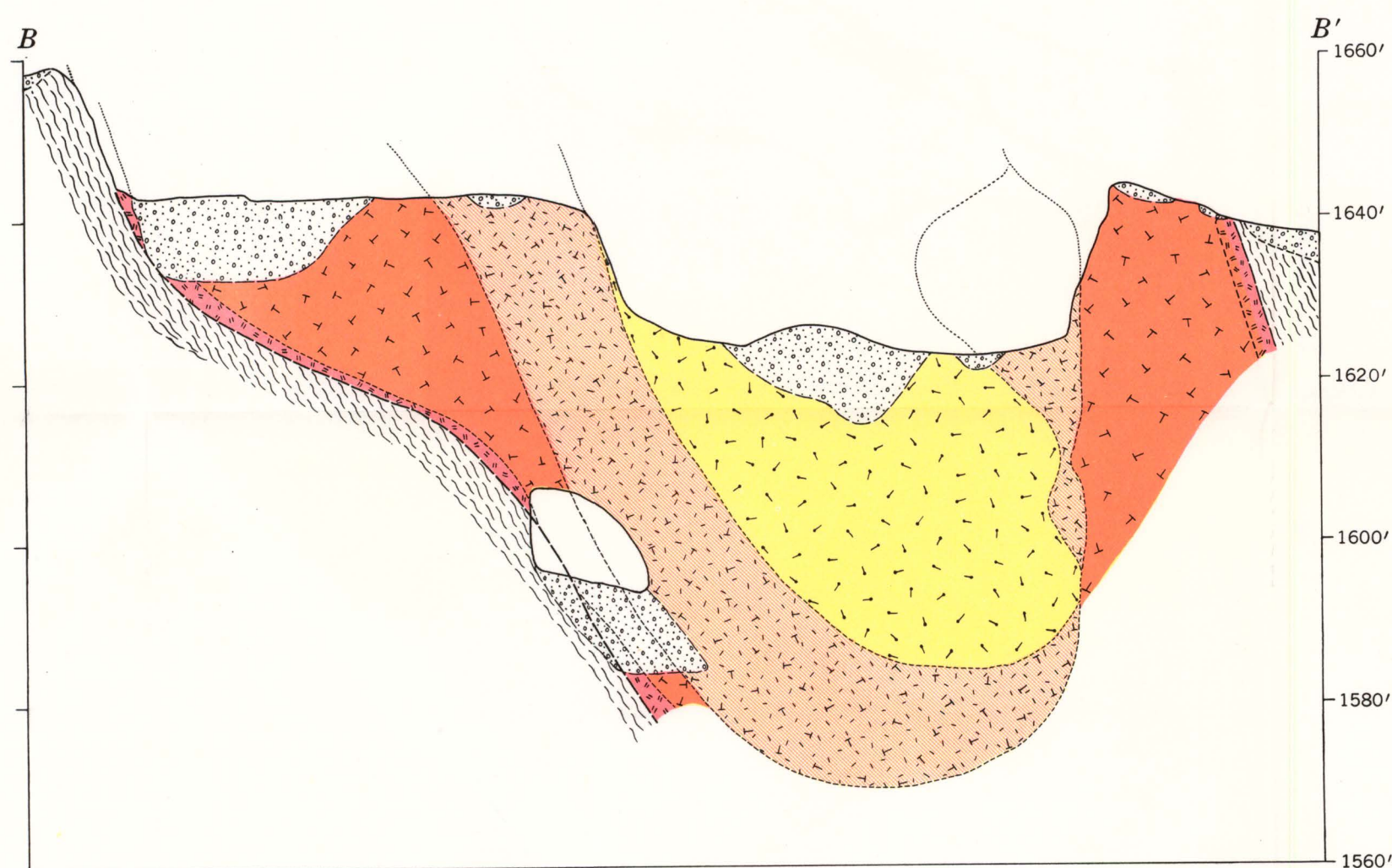
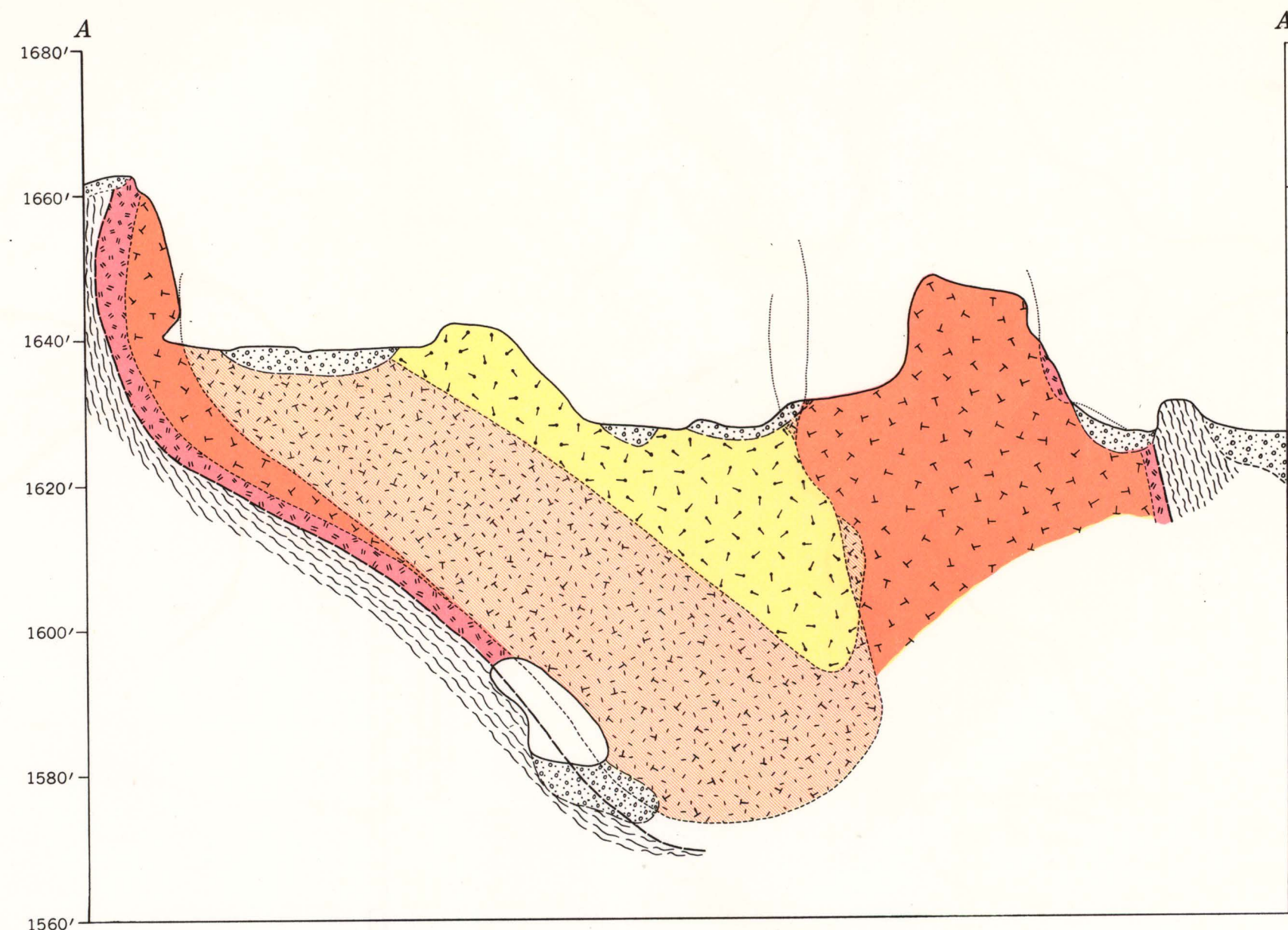


Mapped by J. J. Page, L. F. Dellwig,
F. Stugard, Jr., and P. K. Brown Jr., 1948-49

EXPLANATION

- | | |
|--|--|
| Dump, backfill and overburden
<i>In section</i> | Plagioclase-quartz-muscovite pegmatite
<i>Wall zone</i> |
| Quartz-perthite pegmatite
<i>Core</i> | Quartz-mica-sillimanite schist, pegmatized |
| Plagioclase-quartz-muscovite-perthite pegmatite
<i>Core-margin zone</i> | Quartz-mica-sillimanite schist |
| Beryl | Contact, showing dip
<i>Dashed where inferred</i> |
| Phosphate minerals | Contact between pegmatite units |
| Uranium minerals | Limit of outcrop |
| Quartz-plagioclase-perthite pegmatite
<i>Intermediate zone</i> | Strike and dip of foliation |
| Plagioclase-quartz-perthite pegmatite
<i>Intermediate zone</i> | Rim of excavation |
| | Limit of accessible underground workings |



INTERIOR—GEOLOGICAL SURVEY, WASHINGTON, D. C. — 10087

GEOLOGIC MAP AND SECTIONS OF THE PALERMO NO. 1 MINE, GROTON, GRAFTON COUNTY, NEW HAMPSHIRE

