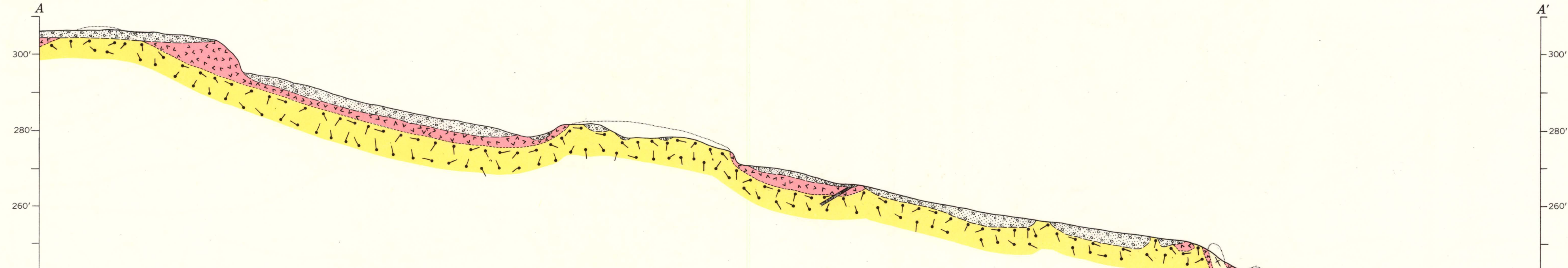


- EXPLANATION
- Overburden
In section only
 - Mafic dike
 - Cleavelandite-perthite-muscovite pegmatite
Replacement body
 - Perthite-quartz-cleavelandite pegmatite
Core
 - Plagioclase-quartz-perthite pegmatite
Wall zone
 - Quartz-muscovite-plagioclase pegmatite
Border zone
 - Beryl
 - Littleton formation (Lower Devonian);
quartz-mica schist
 - Contact, showing dip
Dashed where inferred
 - Contact between pegmatite zones or units
Dashed where inferred
 - Limit of outcrop
 - Strike and dip of foliation
 - Strike and dip of foliation and plunge of lineation
 - Rim of excavation

Mapped by J. J. Page and L. F. Dellwig,
August and November 1948



16°
MAGNETIC NORTH
TRUE NORTH
APPROXIMATE MEAN
DECLINATION, 1960