

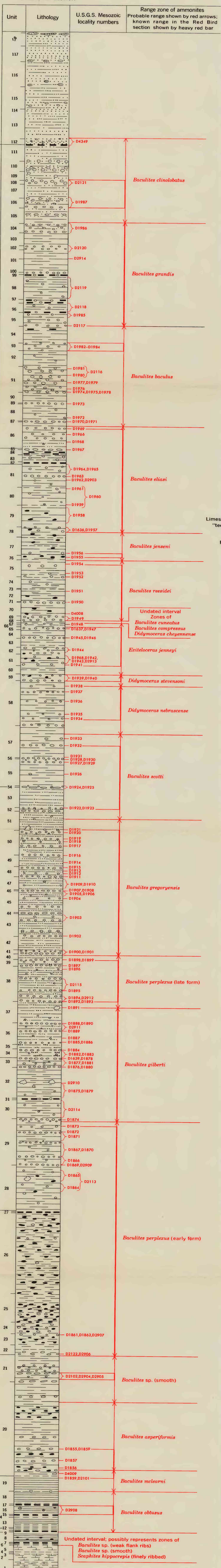
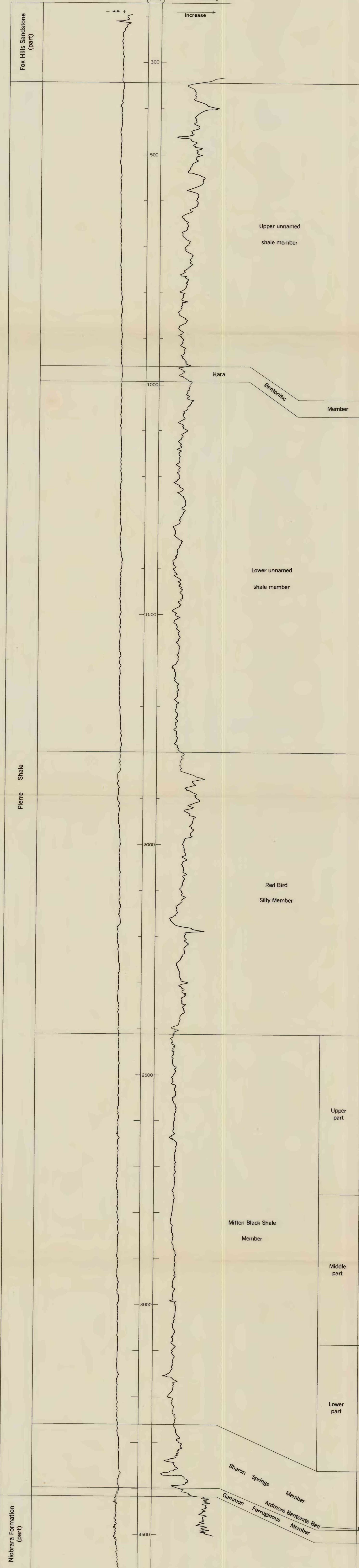
Red Bird reference surface section  
Secs. 13, 14, and 24, T. 38 N., R. 62 W.,  
Niobrara County, Wyoming

COLUMNAR SECTION

Texas Eastern Transmission 1 Federal  
Center SW¼NW¼ sec. 15, T. 38 N., R. 62 W.,  
Niobrara County, Wyoming  
Surface elevation 3880 ft

ELECTRIC LOG

Spontaneous potential      Depth (feet)      Electrical resistivity



EXPLANATION

- Sandstone
- Sandy shale and siltstone
- Dark flaky shale
- Dark hard organic-rich shale
- Bentonitic shale
- Bentonite
- Calcareous shale and marlstone
- Limestone masses in "teepee buttes"
- Limestone
- Phosphate
- Siderite
- Limy sandstone
- Concretions

FEET  
0  
100  
200

INTERIOR—GEOLOGICAL SURVEY, WASHINGTON, D. C.—1966—G65455

REFERENCE SECTION AT RED BIRD, NIOBRARA COUNTY, WYOMING, SHOWING SUBDIVISIONS OF THE PIERRE SHALE RANGE SPAN OF INDEX AMMONITE ZONES, AND CORRELATION WITH THE ELECTRIC LOG OF A NEARBY OIL AND GAS TEST HOLE