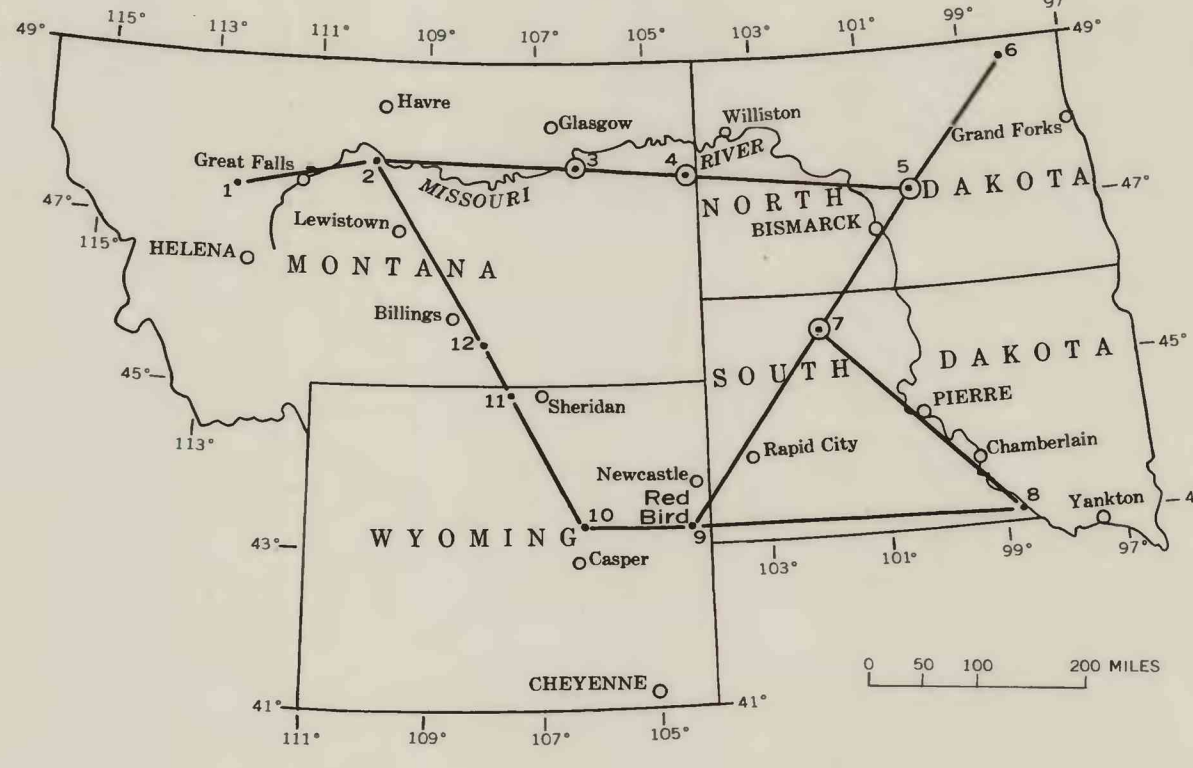
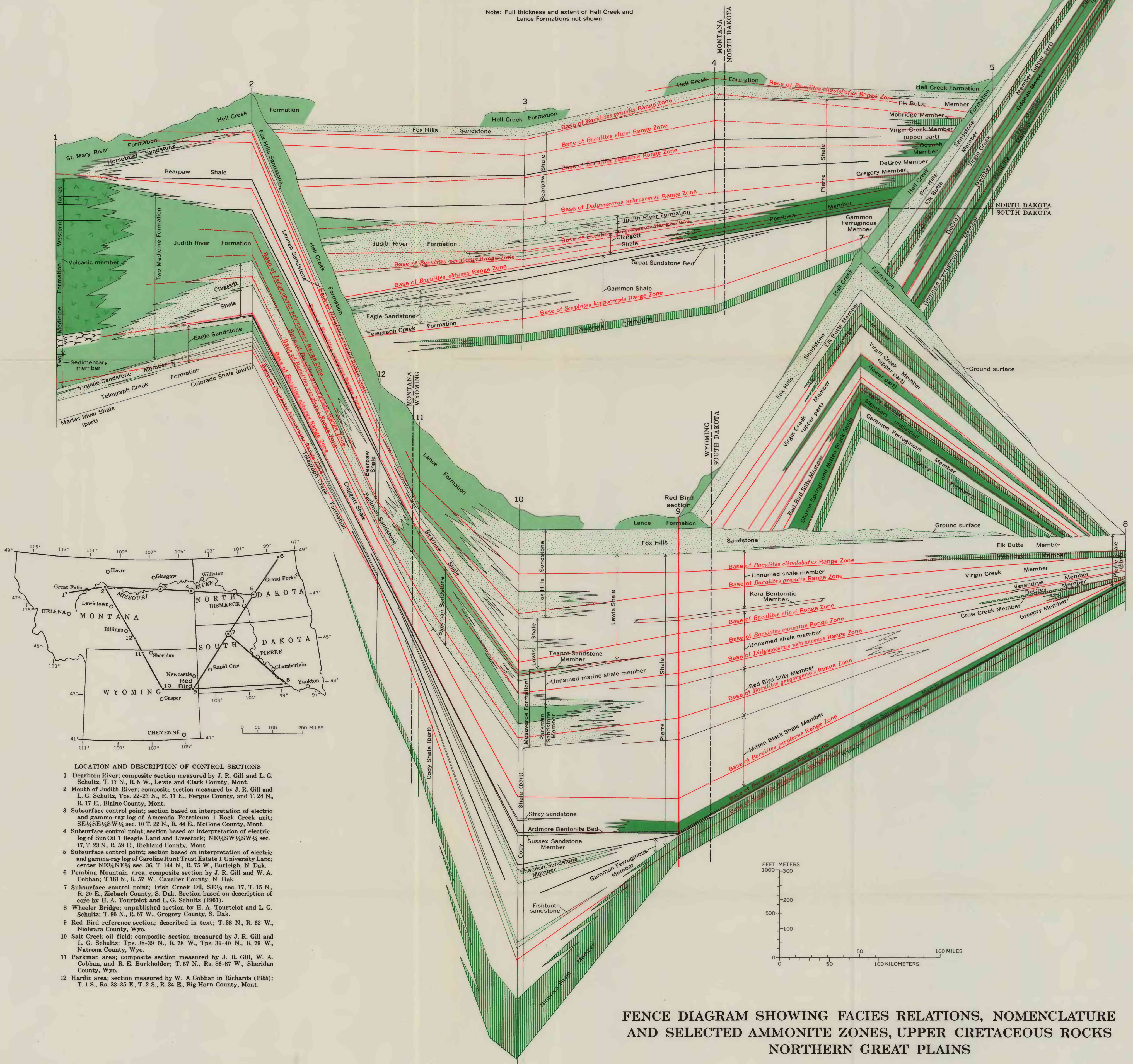


Note: Full thickness and extent of Hell Creek and Lance Formations not shown



- LOCATION AND DESCRIPTION OF CONTROL SECTIONS**
- 1 Dearborn River; composite section measured by J. R. Gill and L. G. Schultz, T. 17 N., R. 5 W., Lewis and Clark County, Mont.
 - 2 Mouth of Judith River; composite section measured by J. R. Gill and L. G. Schultz, Tps. 22-23 N., R. 17 E., Fergus County, and T. 24 N., R. 17 E., Blaine County, Mont.
 - 3 Subsurface control point; section based on interpretation of electric and gamma-ray log of Amerada Petroleum 1 Rock Creek unit; SE $\frac{1}{4}$ SE $\frac{1}{4}$ SW $\frac{1}{4}$ sec. 10 T. 22 N., R. 44 E., McCone County, Mont.
 - 4 Subsurface control point; section based on interpretation of electric log of Sun Oil 1 Beagle Land and Livestock; NE $\frac{1}{4}$ SW $\frac{1}{4}$ SW $\frac{1}{4}$ sec. 17, T. 23 N., R. 59 E., Richland County, Mont.
 - 5 Subsurface control point; section based on interpretation of electric and gamma-ray log of Caroline Hunt Trust Estate 1 University Land; center NE $\frac{1}{4}$ NE $\frac{1}{4}$ sec. 36, T. 144 N., R. 75 W., Burleigh N. Dak.
 - 6 Pembina Mountain area; composite section by J. R. Gill and W. A. Cobban; T. 161 N., R. 57 W., Cavalier County, N. Dak.
 - 7 Subsurface control point; Irish Creek Oil, SE $\frac{1}{4}$ sec. 17, T. 15 N., R. 20 E., Ziebach County, S. Dak. Section based on description of core by H. A. Tourtelot and L. G. Schultz (1961).
 - 8 Wheeler Bridge; unpublished section by H. A. Tourtelot and L. G. Schultz; T. 96 N., R. 67 W., Gregory County, S. Dak.
 - 9 Red Bird reference section; described in text; T. 38 N., R. 62 W., Niobrara County, Wyo.
 - 10 Salt Creek oil field; composite section measured by J. R. Gill and L. G. Schultz; Tps. 38-39 N., R. 78 W., Tps. 39-40 N., R. 79 W., Natrona County, Wyo.
 - 11 Parkman area; composite section measured by J. R. Gill, W. A. Cobban, and R. E. Burkholder; T. 57 N., Rs. 86-87 W., Sheridan County, Wyo.
 - 12 Hardin area; section measured by W. A. Cobban in Richards (1956); T. 1 S., Rs. 83-85 E., T. 2 S., R. 84 E., Big Horn County, Mont.

FENCE DIAGRAM SHOWING FACIES RELATIONS, NOMENCLATURE AND SELECTED AMMONITE ZONES, UPPER CRETACEOUS ROCKS NORTHERN GREAT PLAINS